

- **Designed for 303.875 MHz SAW Resonator**
- **Low Series Resistance**
- **Quartz Stability**
- **Rugged, Hermetic, Low-Profile TO39 Case**
- **Complies with Directive 2002/95/EC (RoHS)**



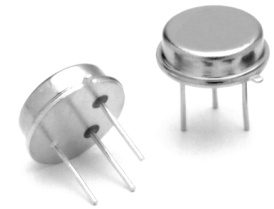
The RO2043 is a true one-port, surface-acoustic-wave (SAW) resonator in a low-profile TO39 case. It provides reliable, fundamental-mode quartz frequency stabilization of fixed-frequency transmitters operating at 303.825 MHz. The RO2043-1 is designed specifically for low-power AM transmitters on remote-control and wireless alarm applications operating in the USA under FCC Part15, in Japan, in Australia, in Korea, and elsewhere.

**Absolute Maximum Ratings**

Rating	Value	Units
CW RF Power Dissipation	+5	dBm
DC Voltage Between Terminals (Observe ESD Precautions)	±30	VDC
Case Temperature	-40 to +85	°C

**RO2043**

**303.875 MHz  
SAW  
Resonator**



**TO39-3 Case**

Characteristic		Sym	Notes	Minimum	Typical	Maximum	Units	
Frequency (+25 °C)	Nominal Frequency	$f_C$	2, 3, 4, 5	303.775		303.975	MHz	
	Tolerance from 303.875 MHz	$\Delta f_C$				±100	kHz	
Insertion Loss		IL	2, 5, 6		4.8	7.0	dB	
Quality Factor	Unloaded Q	$Q_U$	5, 6, 7		11300			
	50 $\Omega$ Loaded Q	$Q_L$			4600			
Temperature Stability	Turnover Temperature	$T_O$	6, 7, 8	37	52	67	°C	
	Turnover Frequency	$f_O$			$f_C+8.2$			kHz
	Frequency Temperature Coefficient	FTC				0.037		ppm/°C <sup>2</sup>
Frequency Aging	Absolute Value during the First Year	fA	1, 6		10		ppm/yr	
DC Insulation Resistance between Any Two Pins			5	1.0			M $\Omega$	
RF Equivalent RLC Model	Motional Resistance	$R_M$	5, 6, 7, 9		74	124	$\Omega$	
	Motional Inductance	$L_M$			437.961		$\mu$ H	
	Motional Capacitance	$C_M$			.626346		fF	
	Pin 1 to Pin 2 Static Capacitance	$C_O$	5, 6, 9	1.5	1.8	2.1	pF	
	Transducer Static Capacitance	$C_P$	5, 6, 7, 9		1.5		pF	
Test Fixture Shunt Inductance		$L_{TEST}$	2, 7		150		nH	
Lid Symbolization (in addition to Lot and/or Date Codes)				RFM RO2043				

**CAUTION: Electrostatic Sensitive Device. Observe precautions for handling.**  
**NOTES:**

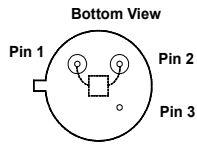
1. Frequency aging is the change in  $f_C$  with time and is specified at +65°C or less. Aging may exceed the specification for prolonged temperatures above +65°C. Typically, aging is greatest the first year after manufacture, decreasing significantly in subsequent years.
2. The center frequency,  $f_C$ , is measured at the minimum insertion loss point,  $IL_{MIN}$ , with the resonator in the 50  $\Omega$  test system ( $VSWR \leq 1.2:1$ ). The shunt inductance,  $L_{TEST}$ , is tuned for parallel resonance with  $C_O$  at  $f_C$ . Typically,  $f_{OSCILLATOR}$  or  $f_{TRANSMITTER}$  is less than the resonator  $f_C$ .
3. One or more of the following United States patents apply: 4,454,488 and 4,616,197 and others pending.
4. Typically, equipment designs utilizing this device require emissions testing and government approval, which is the responsibility of the equipment manufacturer.
5. Unless noted otherwise, case temperature  $T_C = +25^\circ C \pm 2^\circ C$ .
6. The design, manufacturing process, and specifications of this device are subject to change without notice.
7. Derived mathematically from one or more of the following directly measured parameters:  $f_C$ , IL, 3 dB bandwidth,  $f_C$  versus  $T_C$ , and  $C_O$ .
8. Turnover temperature,  $T_O$ , is the temperature of maximum (or turnover) frequency,  $f_O$ . The nominal frequency at any case temperature,  $T_C$ , may be calculated from:  $f = f_O [1 - FTC (T_O - T_C)^2]$ . Typically, *oscillator*  $T_O$  is 20°C less than the specified *resonator*  $T_O$ .
9. This equivalent RLC model approximates resonator performance near the resonant frequency and is provided for reference only. The capacitance  $C_O$  is the static (nonmotional) capacitance between pin1 and pin 2 measured at low frequency (10 MHz) with a capacitance meter. The measurement includes case parasitic capacitance with a floating case. For usual grounded case applications (with ground connected to either pin 1 or pin 2 and to the case), add approximately 0.25 pF to  $C_O$ .

# Discontinued

## Electrical Connections

This one-port, two-terminal SAW resonator is bidirectional. The terminals are interchangeable with the exception of circuit board layout.

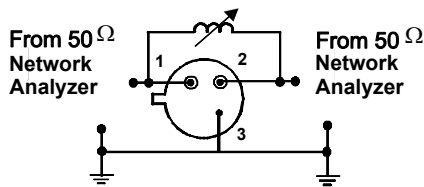
Pin	Connection
1	Terminal 1
2	Terminal 2
3	Case Ground



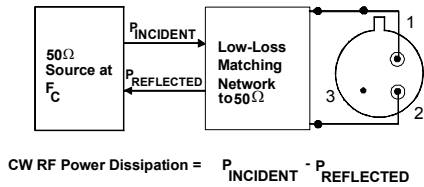
## Typical Test Circuit

The test circuit inductor,  $L_{TEST}$ , is tuned to resonate with the static capacitance,  $C_O$  at  $F_C$ .

## Electrical Test:

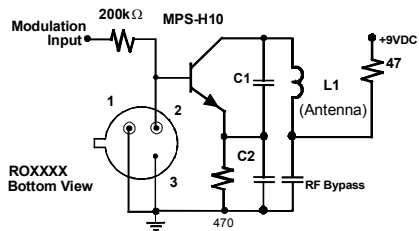


## Power Test:

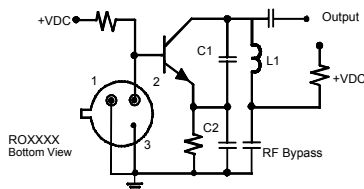


## Typical Application Circuits

### Typical Low-Power Transmitter Application:

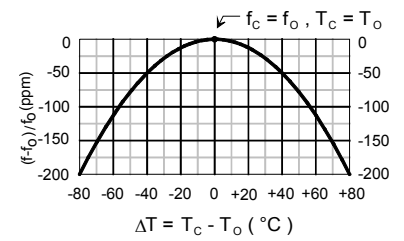


### Typical Local Oscillator Application:



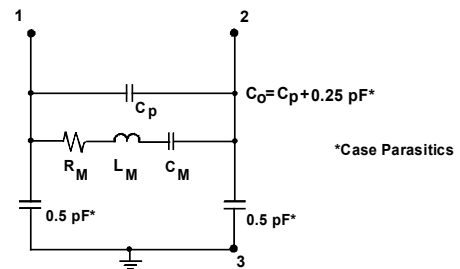
## Temperature Characteristics

The curve shown on the right accounts for resonator contribution only and does not include oscillator temperature characteristics.

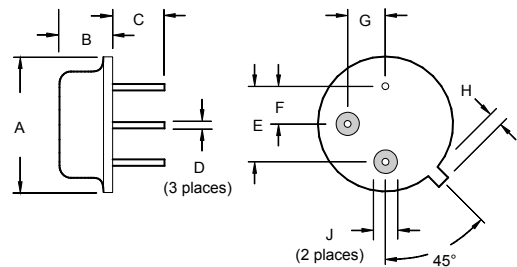


## Equivalent LC Model

The following equivalent LC model is valid near resonance:



## Case Design



Dimensions	Millimeters		Inches	
	Min	Max	Min	Max
A		9.40		0.370
B		3.18		0.125
C	2.50	3.50	0.098	0.138
D	0.46 Nominal		0.018 Nominal	
E	5.08 Nominal		0.200 Nominal	
F	2.54 Nominal		0.100 Nominal	
G	2.54 Nominal		0.100 Nominal	
H		1.02		0.040
J	1.40		0.055	

## X-ON Electronics

Largest Supplier of Electrical and Electronic Components

*Click to view similar products for [Resonators](#) category:*

*Click to view products by [Murata](#) manufacturer:*

Other Similar products are found below :

[B39431R820H210](#) [CSAC2.00MGCM-TC](#) [ECS-HFR-40.00-B-TR](#) [CSTLS4M00G53Z-A0](#) [ECS-CR2-16.00-A-TR](#) [ECS-HFR-20.00-B-TR](#)  
[ECS-CR2-20.00-A-TR](#) [RO3164E-3](#) [CSTNE14M7V510000R0](#) [7D038400I01](#) [7B009843R01](#) [NX2012SA](#) [32.768KHZ](#) [STD-MUB-1](#)  
[NX3215SA](#) [32.768KHZ](#) [STD-MUS-2](#) [7B009843M01](#) [OZ26030001](#) [Q22FA12800519](#) [CSTCR4M00G55E-R0](#) [XC32M4-37.400-F16NLDT](#)  
[CSTLS24M0X53-B0](#) [AWSCR-10.00CELB-C10-T3](#) [AWSCR-12.00CELA-C33-T3](#) [AWSCR-2.00CPLB-C15-T4](#) [AWSCR-3.58CPLA-C30-T4](#)  
[AWSCR-3.58CPLB-C30-T4](#) [AWSCR-4.00CPLA-C33-T4](#) [AWSCR-4.00CPLB-C10-T4](#) [AWSCR-4.00CRLA-C39-T3](#) [AWSCR-4.19CPLA-](#)  
[C30-T4](#) [AWSCR-4.19CRLA-C15-T3](#) [AWSCR-4.19CRLB-C15-T3](#) [AWSCR-4.91CRLB-C15-T3](#) [AWSCR-5.00CPLA-C30-T4](#) [AWSCR-](#)  
[5.00CPLB-C30-T4](#) [AWSCR-5.00CRLA-C15-T3](#) [AWSCR-5.00CRLA-C39-T3](#) [AWSCR-5.00CRLB-C15-T3](#) [AWSCR-7.37CPLA-C30-T4](#)  
[AWSCR-7.37CPLB-C30-T4](#) [9AC04194152080D2JB](#) [CSTCR4M91G55B-R0](#) [CSTLS3M68G56-B0](#) [FC-12M32.768KHZ9PF20PPM](#)  
[ASR433.42E-T](#) [ZTTCS8.00MT](#) [X1A000091000500](#) [X1A0000910001](#) [ECS-SR1-4.19-B-TR](#) [7C024000HW1](#) [7C012000IW1](#) [7C012000MW1](#)