


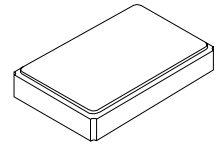


- **Surface Mount Seam-Weld Package**
- **Good Frequency Stability over Temperature**
- **Excellent Reliability**
- **Complies with Directive 2002/95/EC (RoHS)** 

The XTL1006 is a surface mount 5.0 x 3.2 mm crystal unit for use in wireless telecommunications devices, especially where an ultra-miniature package is needed for mobility.

**XTL1006**

**13.56000 MHz  
Crystal Unit**

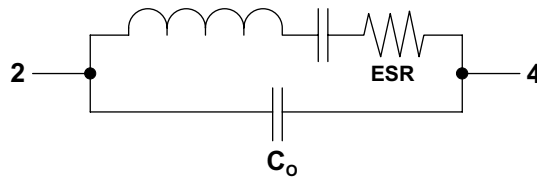


**SM5032-4 Case**

#### Electrical Characteristics

Characteristic	Sym	Notes	Minimum	Typical	Maximum	Units
Nominal Frequency				13.56000		MHz
Mode of Oscillation			Fundamental			
Storage Temperature Range				TBD		°C
Operating Temperature Range			-40		+125	°C
Frequency Stability over Operating Temperature Range			±50 ppm (referred to the value at 25 °C)			
Frequency Make Tolerance	F <sub>L</sub>		±50 ppm @ 25°C ±3 °C			
Equivalent Series Resistance	ESR				50	Ω
Nominal Drive Level				10		uW
Shunt Capacitance	C <sub>O</sub>			2.0		pF
Load Capacitance	C <sub>L</sub>			3		pF
Standard Shipping Quantity on 330 mm (13") Reel				3000		units
Lid Symbolization (in addition to Lot and/or Date Codes)	1006 YWWS					

**Crystal Equivalent Circuit**



**CAUTION: Electrostatic Sensitive Device. Observe precautions for handling.**

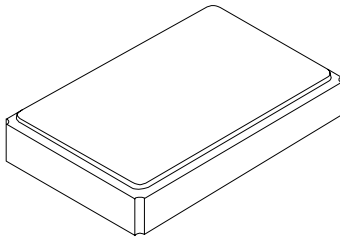
#### Notes:

1. The design, manufacturing process, and specifications of this device are subject to change without notice.

# SM5032-4 Case

## 4-Terminal Surface-Mount Seam Weld Case

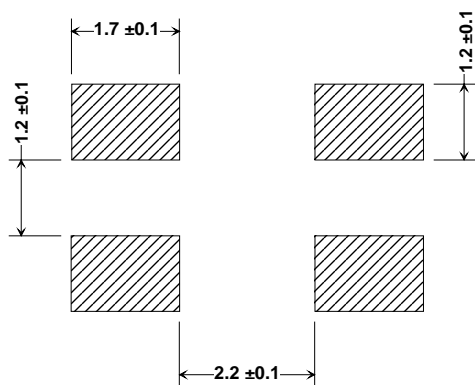
## 5.0 x 3.2 mm Nominal Footprint



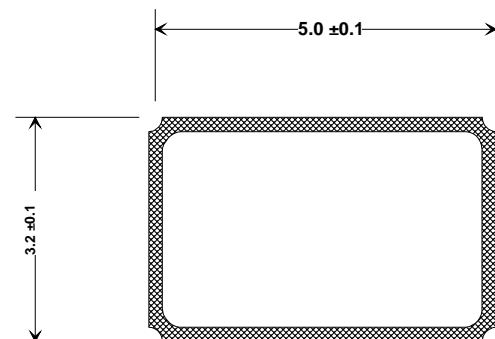
## Electrical Connections

Pin	Connection
1	GND
2	IN/OUT
3	GND
4	IN/OUT

Note: Pin #1 & #3 are connected to metal cap on top



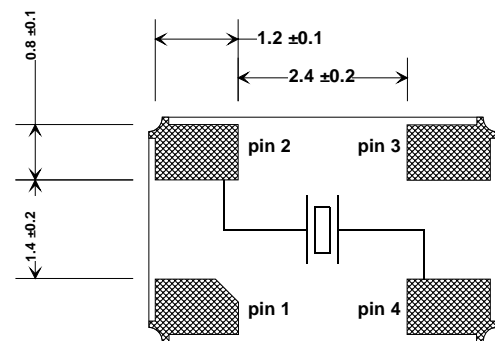
**Footprint (mm)**



### Top View

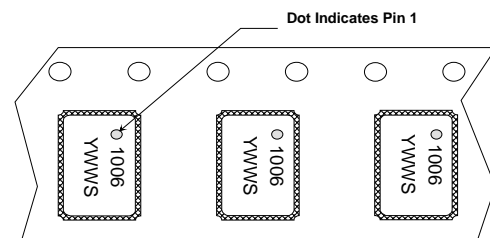


### Side View



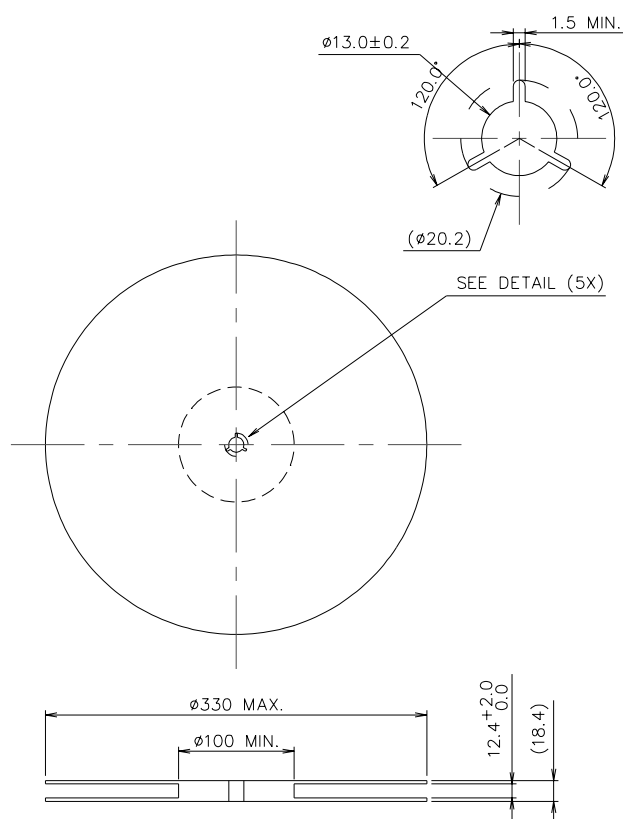
### Bottom View

### Package Dimensions (mm)

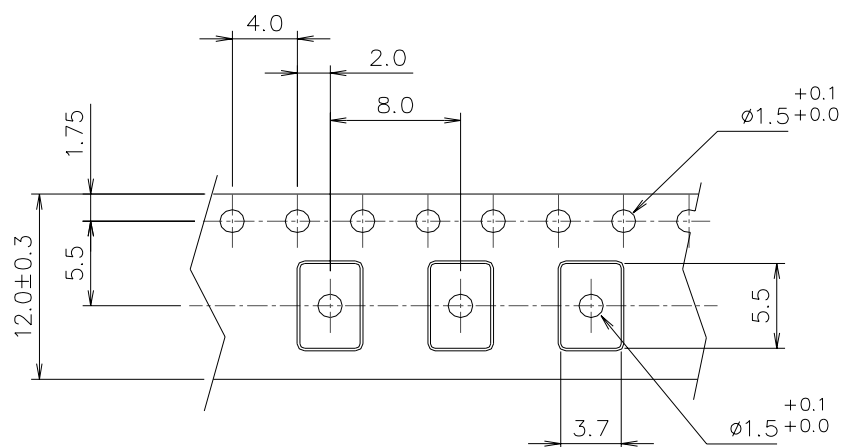


### Package Orientation in Carrier Tape

## Reel Dimensions



## Tape Dimensions



Notes:

1. Unless otherwise specified, tolerance on dimensions is  $\pm 0.1$  mm
2. Material is black conductive polystyrene
3. 10 pitch cumulative tolerance is  $\pm 0.2$  mm

## X-ON Electronics

Largest Supplier of Electrical and Electronic Components

*Click to view similar products for [Crystals](#) category:*

*Click to view products by [Murata](#) manufacturer:*

Other Similar products are found below :

[MC405 32.0000K-R3:PURE SN](#) [7B-27.000MBBK-T](#) [MP1-8.0 99-BU](#) [9B-15.360MBBK-B](#) [PTX-A2JM-10.000M](#) [9C-7.680MBBK-T](#) [H10S-12.000-18-EXT-TR](#) [R38-32.768-12.5-5PPM-NPB](#) [BTD1062E05A-513](#) [21U15A-21.4MHZ](#) [RTX-781DF1-S-20.950](#) [LFXTAL066198Cutt](#) [9C-14.31818MBBK-T](#) [A-11.000MHZ-27](#) [SPT2A-.032768B](#) [SPT2A.032768G](#) [SSPT7F-9PF20-R](#) [FX325BS-38.88EEM1201](#) [MP-1-25.000MHZ-3L](#) [MP-1-6.000MHZ](#) [LFXTAL065253Cutt](#) [LFXTAL066431Cutt](#) [XT9S20ANA14M7456](#) [XT9SNLANA16M](#) [646G-24-2](#) [7B-30.000MBBK-T](#) [6504-202-1501](#) [6526-202-1501](#) [BTJ120E02C](#) [SG636PCE-20.000MC](#) [3404](#) [C1E-24.000-7-2020-R](#) [C1E-19.200-12-1530-X-R](#) [C1E-16.000-12-1530-X-R](#) [FL5000014](#) [EUCA18-3.1872M](#) [425F35E027M0000](#) [17196](#) [MS3V-T1R-32.768kHz-7pF-20PPM-TA-QC-Au](#) [VXM7-1C1-16M000](#) [MS1V-T1K-32.768kHz-10pF-20PPM-TA-QC-Au](#) [MS1V-T1K-32.768kHz-12.5pF-20PPM-TA-QC-Au](#) [MS3V-T1R-32.768kHz-9pF-20PPM-TA-QC-Au](#) [17000](#) [17301](#) [16875](#) [ECS-80-18-30B-JEM-TR](#) [ECS-100-10-30B-CKL-TR](#) [MS1V-T1K-32.768kHz-6pF-20PPM-TA-QC-Au](#)