

## MYD-YA157C Development Board

- MYC-YA157C CPU Module as Controller Board
- STMicroelectronics STM32MP1 MPU based on 650MHz Dual Arm Cortex-A7 and 209MHz Cortex-M4 Cores
- 512MB DDR3, 4GB eMMC Flash
- RS232, RS485, 1 x USB Type-C DRP, 1 x USB2.0 HOST, Gigabit Ethernet, CAN, WiFi/Bluetooth, Micro SD Card Slot
- Supports RGB888 based LCD/HDMI and MIPI-DSI Display
- Supports Running Linux OS
- Optional 7-inch LCD Module



Figure 1-1 MYD-YA157C Development Board

The [MYD-YA157C development board](#) consists of a compact CPU Module [MYC-YA157C](#) and a base board to provide a complete evaluation platform for [ST STM32MP1 Processors](#) which features dual-core Arm Cortex-A7 operating at up to 650 MHz and an embedded Cortex-M4 core operating at up to 209 MHz. Typical applications are industrial control, consumer electronics, smart home, medical and more other energy-efficient applications which require rich performance and low power.

The [MYD-YA157C](#) has a base board which installed [MYC-YA157C CPU Module](#) through 1.0mm pitch 164-pin stamp-hole (Castellated-Hole) interface. The MYC-YA157C CPU Module is a highly-integrated SoM which combines the [STM32MP157](#) processor ([STM32MP157AAC3](#)), 512MB DDR3, 4GB eMMC as well as an integrated GigE PHY chip. The base board has brought out rich peripherals through connectors and headers such as RS232, RS485, USB Type-C DRP, USB2.0 HOST, Gigabit Ethernet, WiFi/Bluetooth, CAN, Micro SD Card Slot, JTAG, RGB888 based LCD/HDMI, MIPI-DSI, etc.

The [MYD-YA157C development board](#) is delivered with one Quick Start Guide, one Type-C cable, one USB to TTL serial cable and one WiFi/Bluetooth antenna to provide user a complete platform for evaluating and prototyping based on STM32MP1 series microprocessors. MYIR also offers [MY-TFT070CV2 LCD Module](#) as an option for the board.

The **MYD-YA157C** is running Linux OS. MYIR provides abundant software resources for Yocto 3.1 based MYIR MEasy-HMI system (available later), Yocto 3.1 based ST Weston system, Ubuntu 18.04 system and MYIR MEasy-IOT system including kernel and driver source code, STM32CubeProgrammer and STM32CubeMX tools to enable users to start their development rapidly and easily.

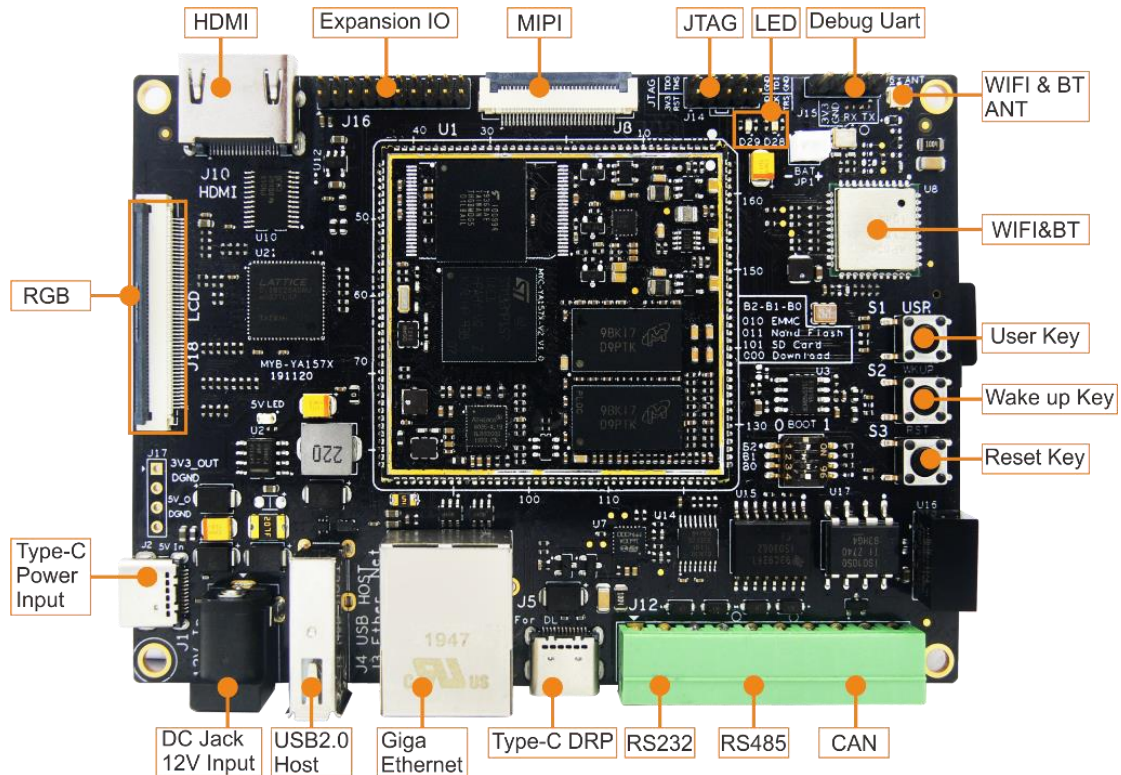


Figure 1-2 MYD-YA157C Development Board Top-view

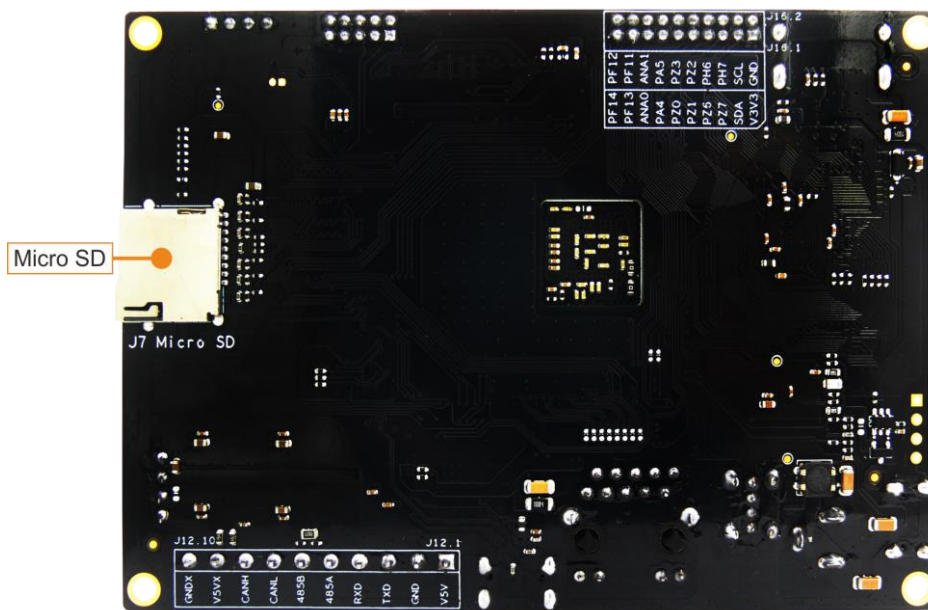


Figure 1-3 MYD-YA157C Development Board Bottom-view

## Hardware Specification

The MYC-YA157C CPU Module is using STMicroelectronics [STM32MP157AAC3](#) Microprocessor with 12 x 12 mm, 0.5 mm pitch, TFBGA361 package which is among the [STM32MP1 Series](#). The STM32MP1 series is based on a heterogeneous single or dual Arm Cortex-A7 and Cortex-M4 cores architecture, strengthening its ability to support multiple and flexible applications, achieving the best performance and power figures at any time. The Cortex-A7 core provides access to open-source operating systems (Linux/Android) while the Cortex-M4 core leverages the STM32 MCU ecosystem. It is available in 3 different lines which are pin-to-pin compatible:

- [STM32MP157](#): Dual Cortex-A7 cores @ 650 MHz, Cortex-M4 core @ 209 MHz, 3D GPU, DSI display interface and CAN FD
  - [STM32MP153](#): Dual Cortex-A7 cores @ 650 MHz, Cortex-M4 core @ 209 MHz and CAN FD
  - [STM32MP151](#): Single Cortex-A7 core @ 650 MHz, Cortex-M4 core @ 209 MHz
- Each line comes with a security option (cryptography & secure boot)

ACCELERATION	STM32 MP1	Cortex®-A7	f <sub>cpu</sub>	Cortex®-M4	f <sub>mcu</sub>	3D GPU	f <sub>gpu</sub>	HW	FD-CAN	MIPI®-DSI
		core	(MHz)	core	(MHz)		(MHz)	Crypto		
<b>CONNECTIVITY</b> <ul style="list-style-type: none"> <li>• 2 x USB2.0 HS Host</li> <li>• USB2.0 OTG FS/HS</li> <li>• 3 x SDMMC/SDIO</li> <li>• USART, UART, SPI, I<sup>2</sup>C</li> <li>• 2 x (TT)FD-CAN2.0*</li> <li>• Gigabit Ethernet IEEE 1588***</li> <li>• FMC (NAND Flash)</li> <li>• Camera VF</li> <li>• Dual mode Quad-SPI</li> <li>• DSI 2 Gbit/s*</li> </ul>	Product lines									
	STM32MP151A	1	650	1	209	-	-	-	-	-
	STM32MP151C							•		
	STM32MP153A	2	650	1	209	-	-	-	2	-
	STM32MP153C							•		
	STM32MP157A	2	650	1	209	•	533	-	2	•
STM32MP157C							•			

Notes:

\* Not available in all product lines

\*\* 16/32-bit for LFBGA448 and TFBGA361 packages, 16-bit only for LFBGA354 and TFBGA257 packages

\*\*\* 10/100M Ethernet only for LFBGA354 and TFBGA257 packages

Table 1-4 Features of STM32MP1 Processors

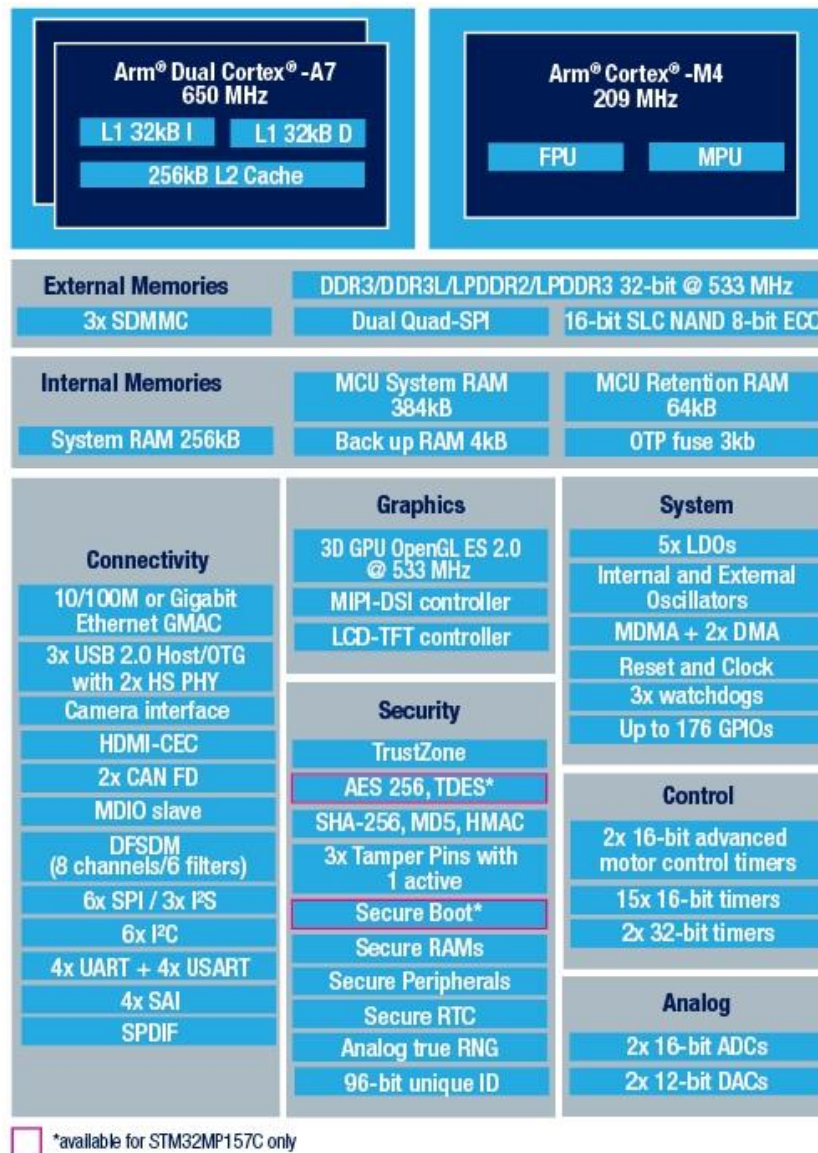


Figure 1-5 STM32MP157 Block Diagram

The MYD-YA157C Development Board is using MYC-YA157C CPU Module as core controller board. It takes full features of STM32MP1 processor and the main features are characterized as below:

**Mechanical Parameters**

- Dimensions: 110mm x 80mm (base board), 45mm x 43mm (CPU Module)
- PCB Layers: 4-layer design (base board), 8-layer design (CPU Module)
- Power supply: +12V/1.5A or USB Type-C Power supply (base board), 5V/0.5A (CPU Module)
- Working temperature: 0~70 Celsius (commercial grade) or -40~85 Celsius (industrial grade)

**The MYD-YA157C Controller Board (MYC-YA157C CPU Module)**

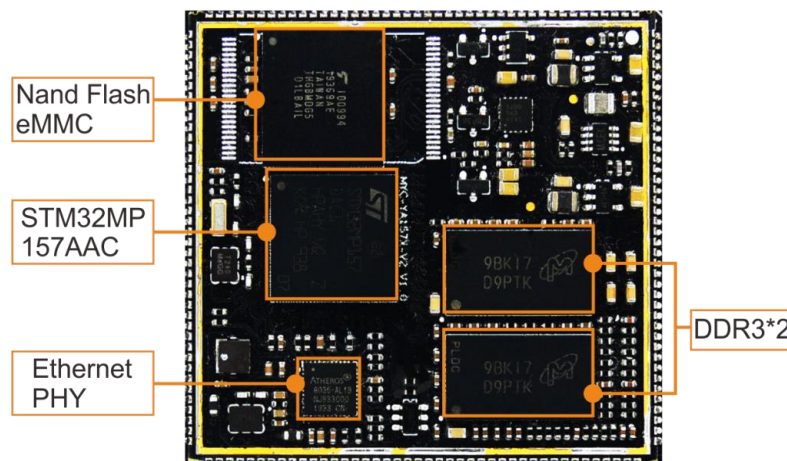


Figure 1-6 MYC-YA157C CPU Module

**Processor**

- STMicroelectronics STM32MP157AAC3 Microprocessor
  - Up to 650MHz dual-core Arm Cortex-A7 32-bit RISC core
  - Up to 209MHz Arm Cortex-M4 32-bit RISC core with FPU/MPU
  - Integrated 3D GPU

**Memory**

- 512MB DDR3 (supports up to 1GB DDR3)
- 4GB eMMC Flash (supports up to 64GB eMMC)
- Nand Flash (alternative design with eMMC, supporting 256MB / 512MB /1GB Nand Flash)

**Peripherals and Signals Routed to Pins**

- One 10/100/1000M Ethernet PHY
- 1.0mm pitch 164-pin Stamp Hole Expansion Interface
  - 8 x Serial ports
  - 6 x I2C
  - 6 x SPI
  - 1 x SAI
  - 1 x USB 2.0 Host and 1 x USB 2.0 OTG
  - 2 x SDIO
  - 2 x CAN
  - 1 x MIPI-DSI
  - 1 x Digital Camera Interface (DCMI)
  - 1 x RGB Interface (supports RGB888, resolution up to 1366 x 768 @60fps)
  - Up to 97 GPIOs

*Note: the peripheral signals brought out to the expansion interface are listed in maximum number. Some signals are reused. Please refer to the processor datasheet and the CPU Module pinout description file.*

**The MYD-YA157C Development Board Base Board**

- Serial ports
  - Debug UART
  - 1 x RS485, isolated power signal
  - 1 x RS232
- USB
  - 1 x USB2.0 Host port
  - 1 x USB Type-C DRP
- 1 x CAN, isolated power signal
- 1 x JTAG Interface (2.0mm pitch 2 x 5-pin headers)
- 1 x 10/100/1000 Mbps Ethernet interface (RJ45)
- WiFi/Bluetooth Module (complies with IEEE 802.11 b/g/n standard and supports Bluetooth V4.2)
- 1 x External antenna connector (simultaneous BT/WLAN receive with single antenna)
- 1 x Micro SD card slot
- RGB888 based LCD/HDMI (supports resolution up to 1366 x 768 pixels at 60Hz)
- 1 x MIPI-DSI Display Interface (supports display resolution up to 1366 x 768 pixels at 60Hz)
- 3 x Buttons (one for Wake up, one for Reset and one for USER)
- 1 x 2.0mm 2\*10-pin male expansion header



*Figure 1-7 MYD-YA157C Development Board*

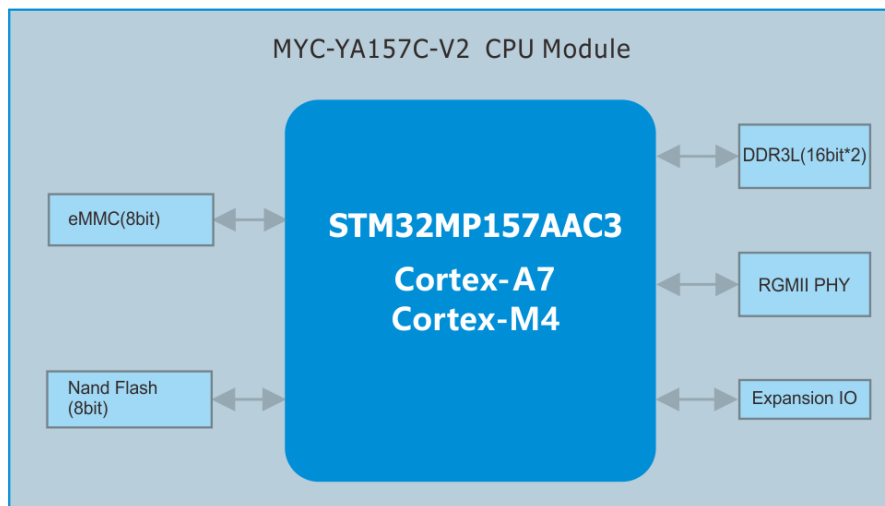


Figure 1-8 MYC-YA157C CPU Module Function Block Diagram

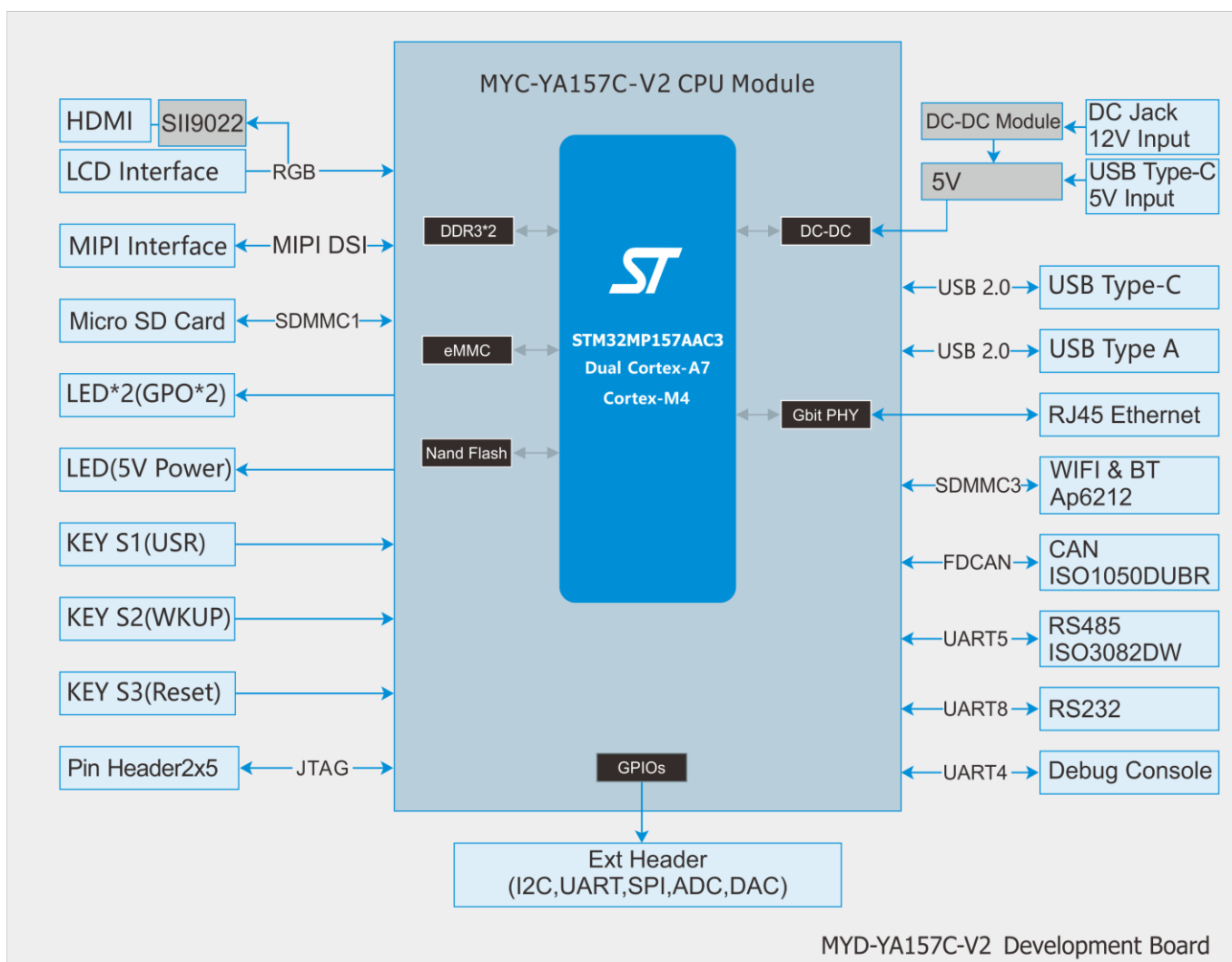


Figure 1-9 MYD-YA157C Development Board Function Block Diagram

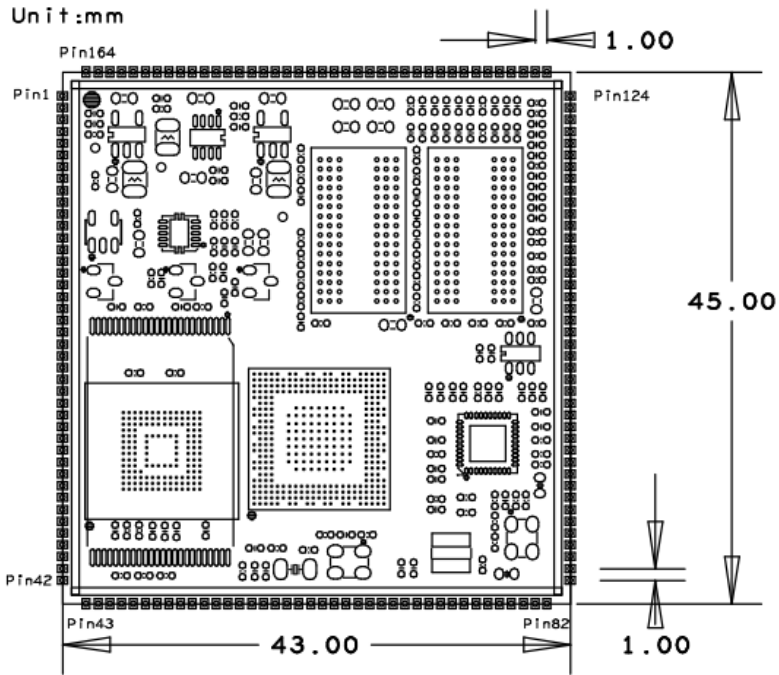


Figure 1-10 MYC-YA157C Dimensions Chart

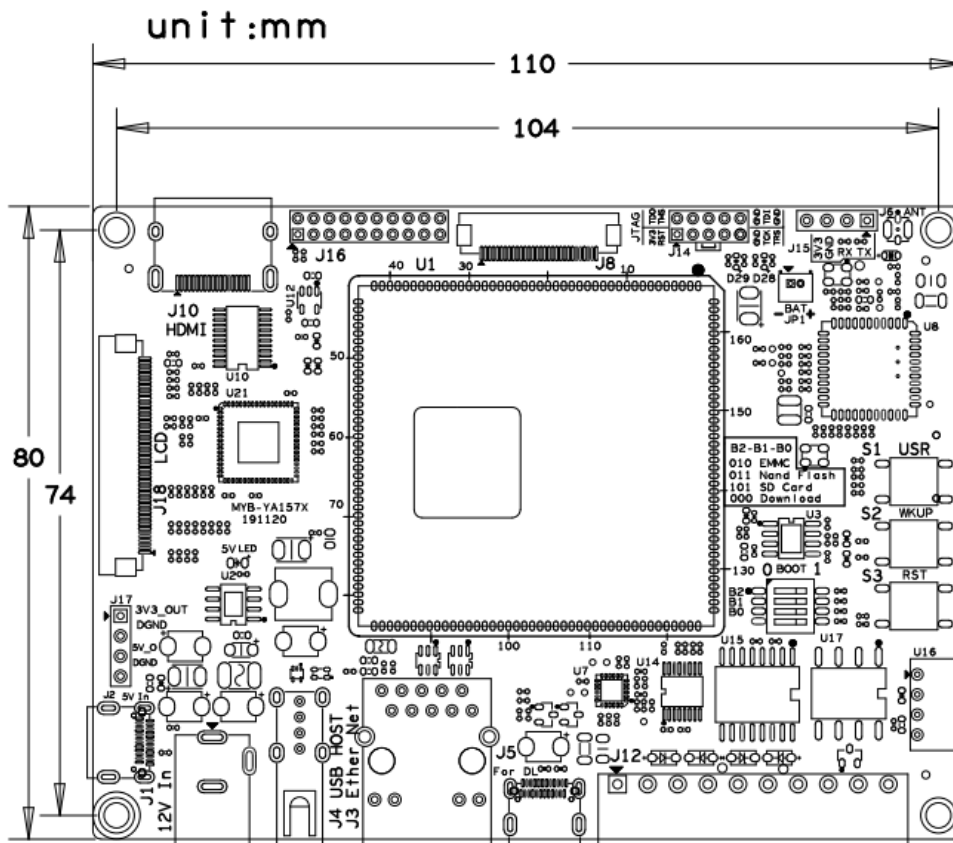


Figure 1-11 MYD-YA157C Base Board Dimensions Chart



**Software Features**

Item	Features	Description	Source Code
Bootstrap program	TF-a-2.2	Arm Trusted Firmware	YES
Bootloader	U-boot-2020.01	Kernel bootstrap	YES
Linux kernel	Linux-5.4.31	Customized based on ST kernel_5.4.31 version for MYD-YA157C	YES
Drivers	Nand Flash	Nand Flash driver	YES
	PMIC	STPMIC driver	YES
	USB Host	USB Host driver	YES
	USB OTG	USB OTG driver	YES
	I2C	I2C driver	YES
	SPI	SPI driver	YES
	Ethernet	10M/100M/1000M Ethernet driver	YES
	MMC	eMMC/TF card driver	YES
	LCD	LCD driver, supports MYIR's 7-inch LCD with 800 x 480 pixels resolution	YES
	HDMI	HDMI driver	YES
	Touch	Capacitive touch screen driver	YES
	PWM	PWM driver	YES
	RTC	RTC driver	YES
	GPIO	GPIO driver	YES
	UART/USART	Serial port driver	YES
	CAN	FDCAN Bus driver	YES
	RS485	RS485 driver	YES
	Camera	USB Camera driver (OV2659)	YES
	WiFi & BT	AP6212 WiFi/BT driver (SDIO)	YES
Watchdog	Watchdog driver	YES	
File system	rootfs	Yocto 3.1 for ST Weston system	YES
	rootfs	Yocto 3.1 for QT5.12 system	YES
	rootfs	MEasy-IOT 1.0 & MEasy_HMI 2.0 demo system developed by MYIR	YES
	Ubuntu core system	Based on ubuntu18.04	YES
Tools	STM32CubeProgrammer	ST programmer software	BIN
	STM32CubeMX	ST configuration integration tool	BIN
Applications	GPIO LED	LED example	YES
	GPIO KEY	KEY example	YES
	NET	TCP/IP Socket C/S example	YES
	RTC	RTC example	YES
	RS232	RS232 example	YES
	RS485	RS485 example	YES
	CAN	CAN example	YES
	LCD	LCD Display example	YES
	Camera	Camera Display example	YES
	UART	UART example	YES
Compiler Tool Chain	Cross compiler	arm-openstlinux_weston-linux-gnueabi	BINARY

*Table 1-1 MYD-YA157C Software Features*

The MYD-YA157C runs Linux OS and is provided with software packages. Based on Linux 5.4.31 kernel, MYIR has provided abundant software resources for Yocto 3.1 based MYIR MEasy-HMI system, Yocto 3.1 based ST Weston system, Ubuntu 18.04 system and MYIR MEasy-IOT system including kernel and driver source code, STM32CubeProgrammer and STM32CubeMX tools to enable users to start their development rapidly and easily.

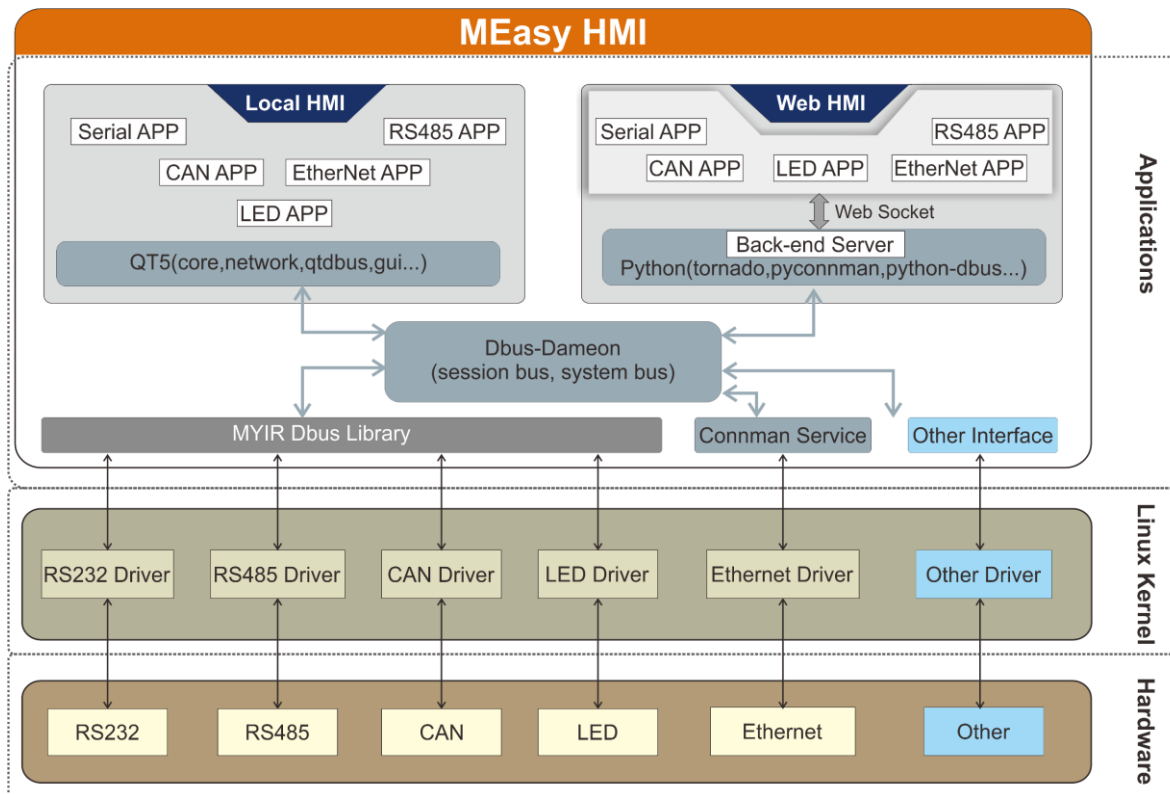


Figure 1-12 MEasy-HMI System Structure

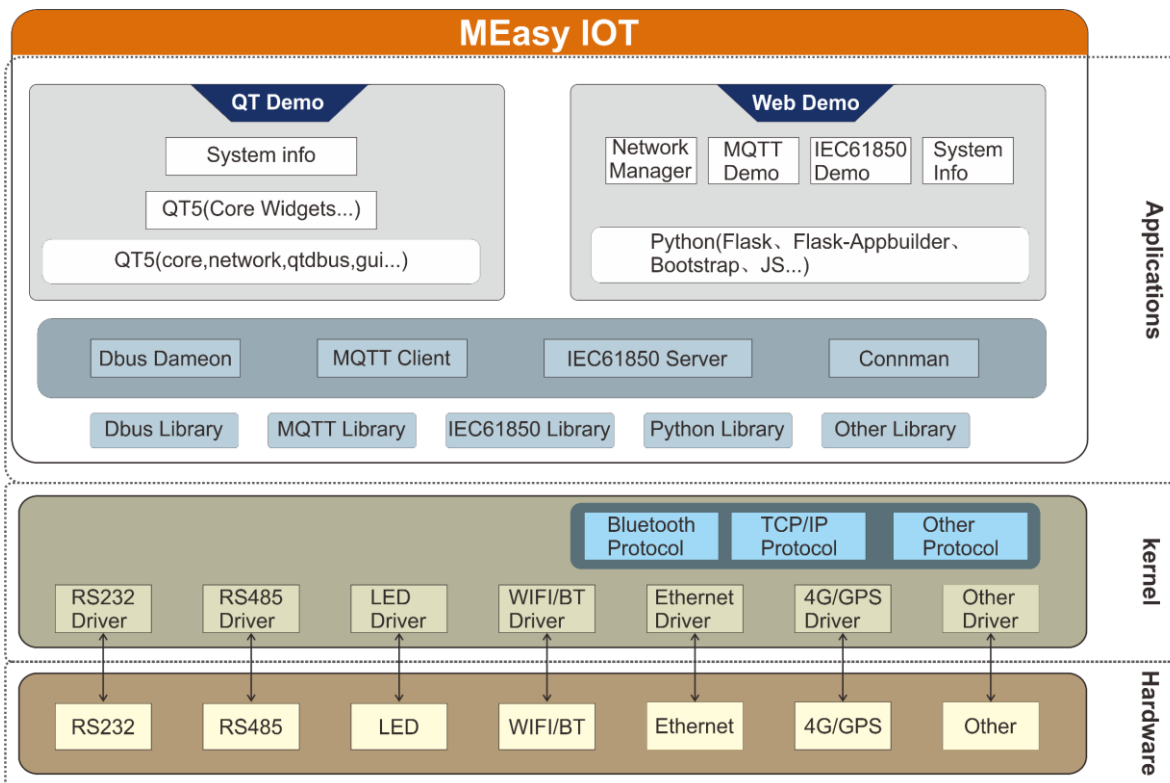


Figure 1-13 MEasy-IOT System Structure

**Order Information**

Product Item	Part No.	Packing List
MYD-YA157C Development Board	MYD-YA157C-V2-4E512D-65-C	<ul style="list-style-type: none"> <li>➤ One MYD-YA157C Development Board (including MYC-YA157C CPU Module)</li> <li>➤ One USB Type-C cable</li> <li>➤ One USB to UART Serial cable</li> <li>➤ One WiFi/Bluetooth Antenna</li> <li>➤ One Quick Start Guide</li> </ul>
	MYD-YA157C-V2-4E512D-65-I	
MYC-YA157C CPU Module	MYC-YA157C-V2-4E512D-65-C	
	MYC-YA157C-V2-4E512D-65-I	
MY-LCD70TP-C LCD Module (with capacitive touch screen)	MY-TFT070CV2	


**MYIR Tech Limited**

Room 04, 6th Floor, Building No.2, Fada Road, Yunli Smart Park, Bantian,  
Longgang District, Shenzhen, Guangdong, China 518129

E-mail: [sales@myirtech.com](mailto:sales@myirtech.com)

Phone: +86-755-22984836

Fax: +86-755-25532724

Website: <http://www.myirtech.com>

## X-ON Electronics

Largest Supplier of Electrical and Electronic Components

*Click to view similar products for [Development Boards & Kits - ARM category](#):*

*Click to view products by [MYIR manufacturer](#):*

Other Similar products are found below :

[EVALSPEAR320CPU](#) [OM13090UL](#) [YGRPEACHNORMAL](#) [SK-FM3-176PMC-ETHERNET](#) [LS1088ARDB-PB](#) [HGD-TELEM915](#) [HGD-TELEM433](#) [YR0K77210B000BE](#) [BPI-PICOW-S3](#) [LAUNCHXL-F2800137](#) [READY FOR AVR BOARD](#) [READY FOR PIC BOARD](#) [READY FOR PIC \(DIP28\)](#) [EVB-VF522R3](#) [MCIMX50EVK](#) [MCIMX53-START-R](#) [AVRPLC16 V6 PLC SYSTEM](#) [MIKROLAB FOR PIC L](#) [MINI-AT BOARD - 5V](#) [MCU-RGB-BOARD](#) [1410](#) [YSDKS128E10](#) [YSTBS5D5E10](#) [MIKROLAB FOR PIC32](#) [MIKROXMEGA BOARD](#) [EASYAVR V7](#) [EASYMX PRO V7 FOR STM32](#) [EASYPIC FUSION V7](#) [MINI-32 BOARD](#) [MINI-AT BOARD - 3.3V](#) [MINI-M0 FOR STM32](#) [MINI-M4 FOR TIVA](#) [FLIPNCLICK WITH ZERYNTH VIRTUAL MACHINE](#) [STM32 M4 CLICKER](#) [8051 READY](#) [YSTBS3A6E10](#) [YSDKS124S20](#) [TWR-KV46F150M](#) [QC-DB-H00003](#) [2125](#) [2126](#) [EVALSP1310CPU](#) [STM32L1-GAME](#) [ATSAM4C32-EK](#) [ATSAM4CMP32-DB](#) [ATSAM4E-XPRO](#) [ATSAMG55-XPRO](#) [23](#) [FRDM-K22F](#) [NUCLEO-F412ZG](#)