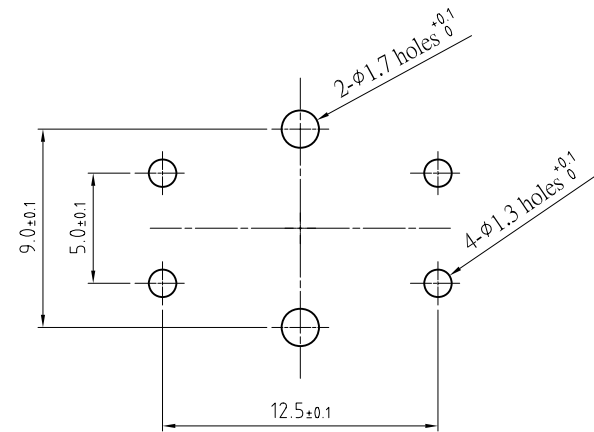
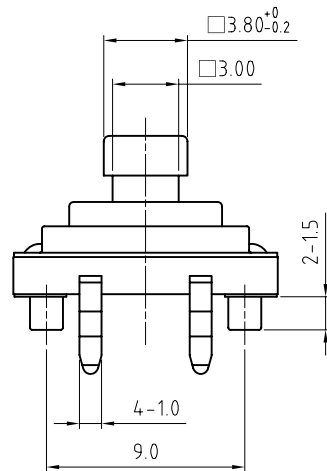
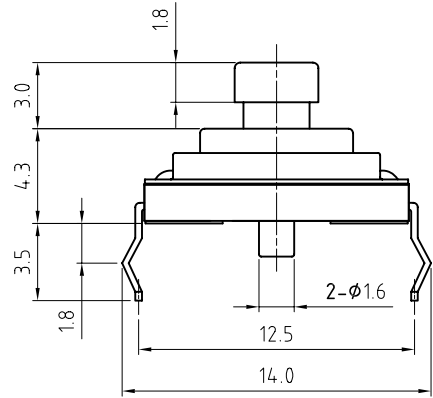
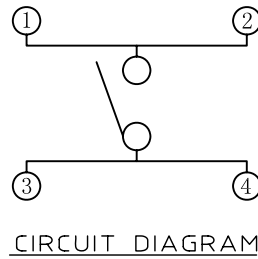
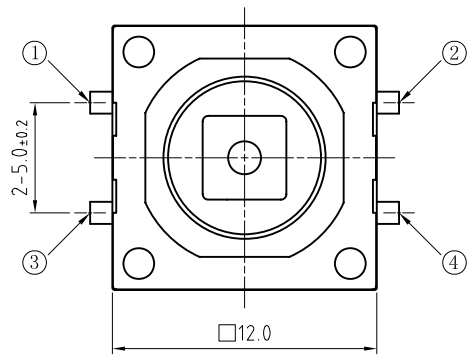


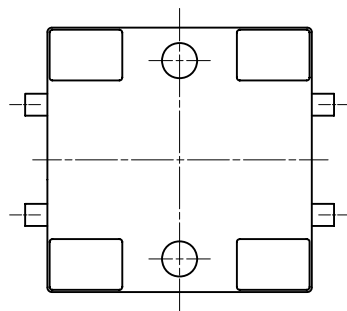
RevNo	Revision note	Date	Signature
△	모델 파생	2018.10.23	



P.C.B MOUNTING HOLE DIMENSION

NOTE

1. RATING : 12V DC, 50mA
2. TRAVEL : 0.30 $\pm_{0.1}^{0.2}$ mm
3. CONTACT RESISTANCE : 100mΩ
4. GENERAL TOLERANCE : ±0.3
5. MANUFACTURING SPECIFICATION WOULD BE ACCORDANCE WITH WT0182



JT-S1212WFP	130010000545	260±70gf	RED	10,000,000	WITH BOSS
MODEL	CODE NO.	O/FORCE	STEM COLOR	LIFE CYCLES	REMARKS

Designed by	B.SAGONG		Scale	4/1	Date	2018.10.23	
Checked by							
Approved by	J.Y.JOUNG	Unit	mm	Sheet	1/1	Rev.	0
Item	TACTILE SWITCH		Tool	Au			
Model	JT-S1212F SERIES		Drawing name	ASSEMBLY			

25 ~ 85% RH and 860 ~ 1060mbar in atmospheric pressure.
 Should any doubt arise in judgement, tests shall be conducted
 at 20±2°C, 65±5% RH and 860 ~ 1060mbar.

2. RATED VOLTAGE AND CURRENT.

DC 12V 50mA

3. ELECTRICAL PERFORMANCE

	PROPERTY	TEST CONDITIONS	PERFORMANCE
3.1	Contact resistance	Measured at DC 5V 10mA or by ohmmeter allowing a small current at 1kHz with a load of twice of the actuating force.	* less than 100mΩ.
3.2	Insulation resistance	DC 100V is applied between terminals and between terminals and cover for 1minute ±5seconds.	* greater than 100MΩ.
3.3	Dielectric strength	AC 250V (50 ~ 60Hz)is applied between terminals and between terminals and cover for 1 minute.	* No insulation defect shall be observed.
3.4	Bounce	Measured by lightly striking the center of the stem at a rate of 3 operations/sec..	* less than 10 msec.

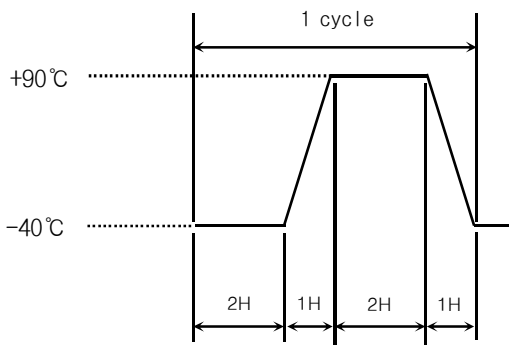
						APPD	CHKD	DSGN	TITLE
									JT-S1212F SERIES
									DOCUMENT NO.
									WT 0182
ZONE	SYMB	DATE	APPD	CHKD	DSGD				

4.2	Return force	until the stem returns to its free position.	greater than 50g.
4.3	Travel		* 0.30 ^{+0.2} / _{-0.1} mm
4.4	Stop strength	A static force of 5Kgf shall be applied to the direction of operation for 60 seconds.	* Shall be free from mechanical and electrical abnormalities.
4.5	Stem withdrawal force	A static load of 3Kgf is applied to the direction of pulling for 3 seconds.	* Shall be free from mechanical and electrical degradation.

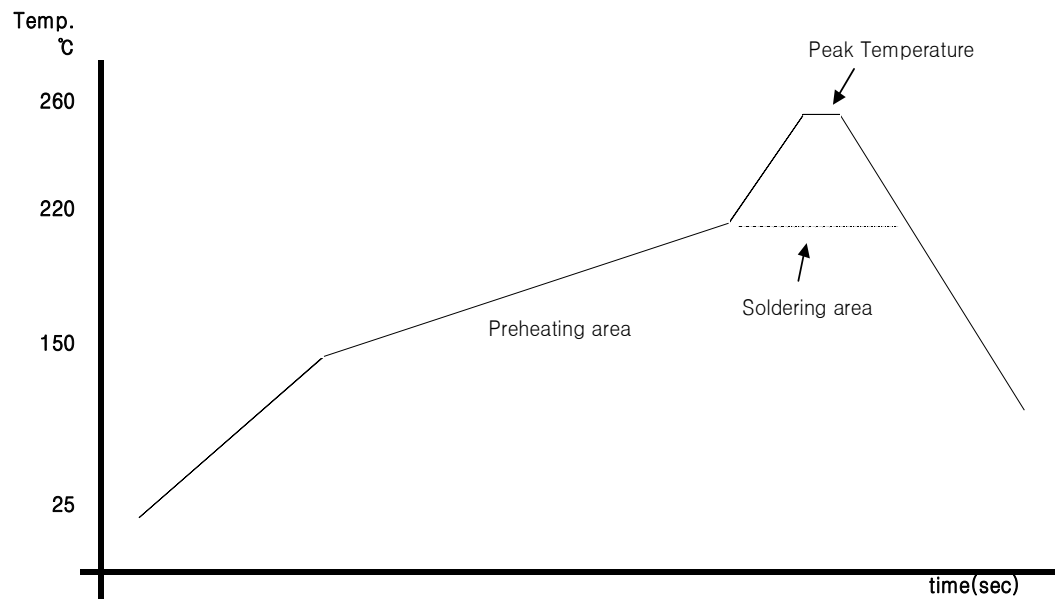
5. DURABILITY

	PROPERTY	TEST CONDITIONS	PERFORMANCE
5.1	Operating life	10,000,000cycles operation with a load of 150% of Actuating force a rate of 2 cycles/sec. With a resistive load supplying DC 5V 5mA.	* Contact resistance : 200mΩ max. * Insulation resistance : 10MΩ min. * Actuating force : within ±30% of the initial value.

						APPD	CHKD	DSGN	TITLE
									JT-S1212F SERIES
									DOCUMENT NO.
									WT 0182
ZONE	SYMB	DATE	APPD	CHKD	DSGN				

6.2	Dry heat proof	After testing at $90\pm 2^{\circ}\text{C}$ for 96hours, the sample is allowed to stand under normal temperature for 1hour and measurement is performed within 1hour after that.	item 3 and 4 shall be met.
6.3	Damp heat proof	After test at $60\pm 2^{\circ}\text{C}$ and 90 ~ 95% in relative humidity for 96hours, the sample is allowed to stand under normal temperature and humidity conditions for 1hour, and measurement is performed within 1hour after that. Water drops should be wiped off.	<ul style="list-style-type: none"> * Contact resistance : 200mΩ max. * Insulation resistance : 10MΩ minimum. * The requirement in item 3.3 and 4 shall be met.
6.4	Thermal cycling	 <p data-bbox="398 901 974 1069">; After the test conducted under 5 cycles the sample is allowed to stand under normal temperature and humidity conditions for 1hour, and the measurement is performed within 1hour.</p>	* The requirement in item 3 and 4 shall be met.

						APPD	CHKD	DSGN	TITLE	JT-S1212F SERIES
									DOCUMENT NO.	WT 0182
ZONE	SYMB	DATE	APPD	CHKD	DSGD					



< Temperature profile >

7.2 Manual soldering conditions

- 1) Soldering temperature --- 350°C max.
- 2) Soldering time ----- 3 (sec) max.

						APPD	CHKD	DSGN	TITLE	JT-S1212F SERIES
									DOCUMENT NO.	WT 0182
ZONE	SYMB	DATE	APPD	CHKD	DSGD					

X-ON Electronics

Largest Supplier of Electrical and Electronic Components

Click to view similar products for [Tactile Switches](#) category:

Click to view products by [NAMAE](#) manufacturer:

Other Similar products are found below :

[KMR633NG LFG](#) [5GTH92001](#) [5GTH9202242](#) [6426-201-11343](#) [MJ1226](#) [MJTP1109B](#) [MJTP1138EAUTR](#) [MJTP1230BL](#) [MJTPSHW](#)
[GS6.90F300QP](#) [1-1977223-0](#) [1-1977120-4](#) [ADTSA62NV](#) [ADTSA62RV](#) [ADTSA63KV](#) [ADTSA644NV](#) [ADTSM24NVTR](#) [ADTSMW66NV](#)
[ADTSMW67RV](#) [ATM533VTR](#) [1571300-3](#) [B3F-3123](#) [B3F-6055A](#) [B3F-B32-01-KIT](#) [1977177-8](#) [1977266-1](#) [2-1977223-4](#) [2-1977223-7](#)
[ADTS644KV](#) [ADTSA61RV](#) [ADTSA62KV](#) [ADTSA63NV](#) [ADTSA63RV](#) [ADTSA65NV](#) [ADTSM21NSVTR](#) [ADTSM25RVTR](#)
[ADTSM31RVTR](#) [ADTSM32NVTR](#) [ADTSM61YVTR](#) [ADTSM63SVTR](#) [ADTSM644KVTR](#) [ADTSMW64RV](#) [ADTSMW69NV](#)
[FSMRA4JHA04](#) [GS4.70F300QP](#) [D38999/20JJ37SA](#) [TL1105B](#) [TL1105J](#) [ATH447K2Q](#) [ATM534VTR](#)