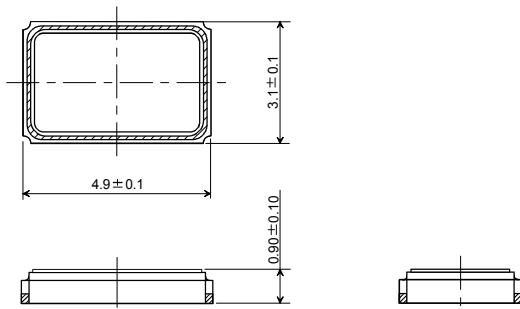


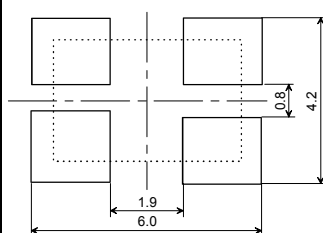
Specification of Crystal Units

1	NDK Part Number	See table 1
2	NDK Specification Number	STD-CSY-1
3	Type	NX5032SD
4	Electrical Characteristics	
4.1	Nominal Frequency (f_{nom})	See table 1
4.2	Overtone order	Fundamental
4.3	Frequency Tolerance	$\pm 15 \times 10^{-6}$ max. (+25 °C)
4.4	Frequency Versus Temperature Characteristics	$\pm 50 \times 10^{-6}$ max. (-40 ~ +125 °C) The reference temperature shall be +25 °C
4.5	Equivalent Series Resistance (R_r)	See table 1
4.6	Shunt Capacitance (C_0)	NA
4.7	Maximum Drive Level	100 μ W max.
5	Measurement Circuit	
5.1	Frequency Measurement	
5.1.1	Measuring Instrument	π -network
5.1.2	Load Capacitance (C_L)	12 pF
5.1.3	Level of Drive	10 μ W
5.2	Equivalent Resistance Measurement	
5.2.1	Measuring Instrument	π -network
5.2.2	Load Capacitance (C_L)	Series
5.2.3	Level of Drive	10 μ W
6	Operable Temperature Range	-40 ~ +125 °C
7	Storage Temperature Range	-40 ~ +125 °C
8	Dimension	

(Unit: mm)



Reference Land Pattern (Typical)



Top View
Terminal land connections

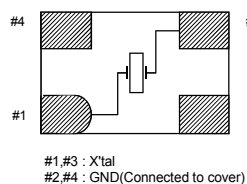


Table1

f_{nom} (MHz)	R_r (Ω) max.	NDK Part Number
9.750	150	NX5032SD-9.750M-STD-CSY-1
9.84375	150	NX5032SD-9.84375M-STD-CSY-1
10.000	120	NX5032SD-10.000M-STD-CSY-1
10.010	120	NX5032SD-10.010M-STD-CSY-1
12.000	120	NX5032SD-12.000M-STD-CSY-1
13.000	120	NX5032SD-13.000M-STD-CSY-1
13.08148	120	NX5032SD-13.08148M-STD-CSY-1
13.125	120	NX5032SD-13.125M-STD-CSY-1
13.225625	120	NX5032SD-13.225625M-STD-CSY-1
13.400	120	NX5032SD-13.400M-STD-CSY-1
13.560	120	NX5032SD-13.560M-STD-CSY-1
14.000	120	NX5032SD-14.000M-STD-CSY-1
14.264063	120	NX5032SD-14.264063M-STD-CSY-1
15.2671875	100	NX5032SD-15.2671875M-STD-CSY-1
16.000	100	NX5032SD-16.000M-STD-CSY-1
16.0132	100	NX5032SD-16.0132M-STD-CSY-1
18.080	100	NX5032SD-18.080M-STD-CSY-1
18.089583	100	NX5032SD-18.089583M-STD-CSY-1
18.370366	100	NX5032SD-18.370366M-STD-CSY-1
19.0625	100	NX5032SD-19.0625M-STD-CSY-1
19.6875	100	NX5032SD-19.6875M-STD-CSY-1
20.000	80	NX5032SD-20.000M-STD-CSY-1
21.948717	80	NX5032SD-21.948717M-STD-CSY-1
22.0586	80	NX5032SD-22.0586M-STD-CSY-1

X-ON Electronics

Largest Supplier of Electrical and Electronic Components

Click to view similar products for [ndk manufacturer](#):

Other Similar products are found below :

[NX5032SD 13.56MHZ AT-TPMS](#) [NX3225GB 20.000MHZ STD-CRA-2](#) [NZ2520SHA-50M-END5359A](#) [NX2016SA-48M-EXS00A-CS08718](#)
[NX3225GA-13.56M-STD-CRG-2](#) [NX2520SA-24.000000MHZ-B8](#) [NX5032GA-25.000M-LN-CD-1](#) [NX8045GB-6MHZ-STD-CSF-3](#)
[NX2016SA-24M-EXS00A-CS08891](#) [NT3225SA-19.2M-DJA3002B](#) [NX8045GB-5MHZ-STD-CSF-3](#) [NX3215SA-32.768K-STD-MUA-14](#)
[NX8045GB-12M-STD-CSF-4](#) [NX3225SA-40.000](#) [NX3225GA-26.000M-STD-CRG-2](#) [NX5032GA-20.000M-LN-CD-1](#) [NX3225SA-27](#)
[NT3225SA-19.20A](#) [NX3225SA-114.285MHZ-EXS00A-CS06528](#) [NX3225SA-20.000000MHZ-B2](#) [NX3225SA-26.000000MHZ-B1](#)
[NX2016SA-25MHZ-STD-CZS-2](#) [NX2520SG-19.2M-EXS00A-CS04340](#) [NX3225SA-16.000000MHZ-B3](#) [NX3225GA-27M-STD-CRG-2](#)
[NX3225SA-25.000MHZ-STD-CSR-1](#) [NX3225GA-12.000M-STD-CRA-1](#) [NX2520SA-25.000M-STD-CSW-5](#) [NX3225GA-24MHZ-STD-](#)
[CRA-1](#) [NX3225SA-40.000MHZ-STD-CSR-1](#) [NX3225SA-27.000MHZ-STD-CSR-1](#) [NX3225SA-20.000MHZ-STD-CSR-1](#) [NX2016SA-26M-](#)
[STD-CZS-1](#) [NX3225GB 16.000MHZ STD-CRA-2](#) [NX3225SA-26.000M-STD-CSR-3](#) [NX3225GA-32M-EXS00A-CG02611](#) [NX2520SA-](#)
[16MHZ-STD-CSW-4](#) [NX3225GA-12MHZ-STD-CRG-1](#) [NX3225GA-27.000M-STD-CRG-1](#) [NX3225SA-20.000M-STD-CSR-3](#) [NX3225GA-](#)
[20MHZ-STD-CRA-1](#) [NX1612SA-50M-EXS00A-CS08403](#) [NZ2520SHA-80M-END5302A](#) [NX2520SA-26MHZ-STD-CSX-1](#) [NX2016SA-](#)
[26M-STD-CZS-2](#) [NX3225SA-30.000M-STD-CSR-3](#) [NX3215SA-32.768K-STD-MUA-9](#) [NX3225GA-14.7456M-STD-CRG-2](#) [NX3225SA-](#)
[26.000MHZ-STD-CSR-1](#) [NX3225GA-16.9344M-STD-CRG-2](#)