

# NHD-5.7B-LED Driver

**LED Backlight Driver**

RoHS Compliant

**Newhaven Display International, Inc.**

2661 Galvin Ct.

Elgin IL, 60124

Ph: 847-844-8795 Fax: 847-844-8796

[www.newhavendisplay.com](http://www.newhavendisplay.com)

[nhtech@newhavendisplay.com](mailto:nhtech@newhavendisplay.com)

[nhsales@newhavendisplay.com](mailto:nhsales@newhavendisplay.com)

## Document Revision History

Revision	Date	Description	Changed by
0	07/28/2010	Initial Release	MC
1	6/1/16	Mechanical Drawing Updated	SB

## Functions and Features

- HIMAX HA7101 LED Driver
- PWM control backlight brightness with Enable pin
- 5V power supply input for 9.9V output, for **NHD-5.7-320240WFB** series displays

## ELECTRICAL CHARACTERISTICS

Parameter	Symbol	Condition	Min	Typ	Max	Unit
Operating Temperature Range	-	Absolute Max	-20	25	85	°C
Storage Temperature Range	-	Absolute Max	-30	25	100	°C
Input Voltage	Vin	-	3.3	5.0	5.5	V
Input Current (no load)	-	Vin=5V	-	1.2	-	mA
Input Current (with load)	-	Vin=5V	-	480	-	mA
Output Current	Iout	Vin=5V	-	140	-	mA
Output Voltage	Vout	Vin=5V	-	9.9	-	V

## J1 Pin Description (user input)

Pin No.	Symbol	External Connection	Function Description
1	VCC	Power Supply	Supply Voltage for LED driver circuit
2	E	MPU	Enable input (PWM signal)
3	GND	Power Supply	Ground for LED driver circuit

Connector: **M125PR-03**

Recommended mating connector: **M125H-03** [http://www.newhavendisplays.com/app\\_notes/M125H-03.pdf](http://www.newhavendisplays.com/app_notes/M125H-03.pdf)

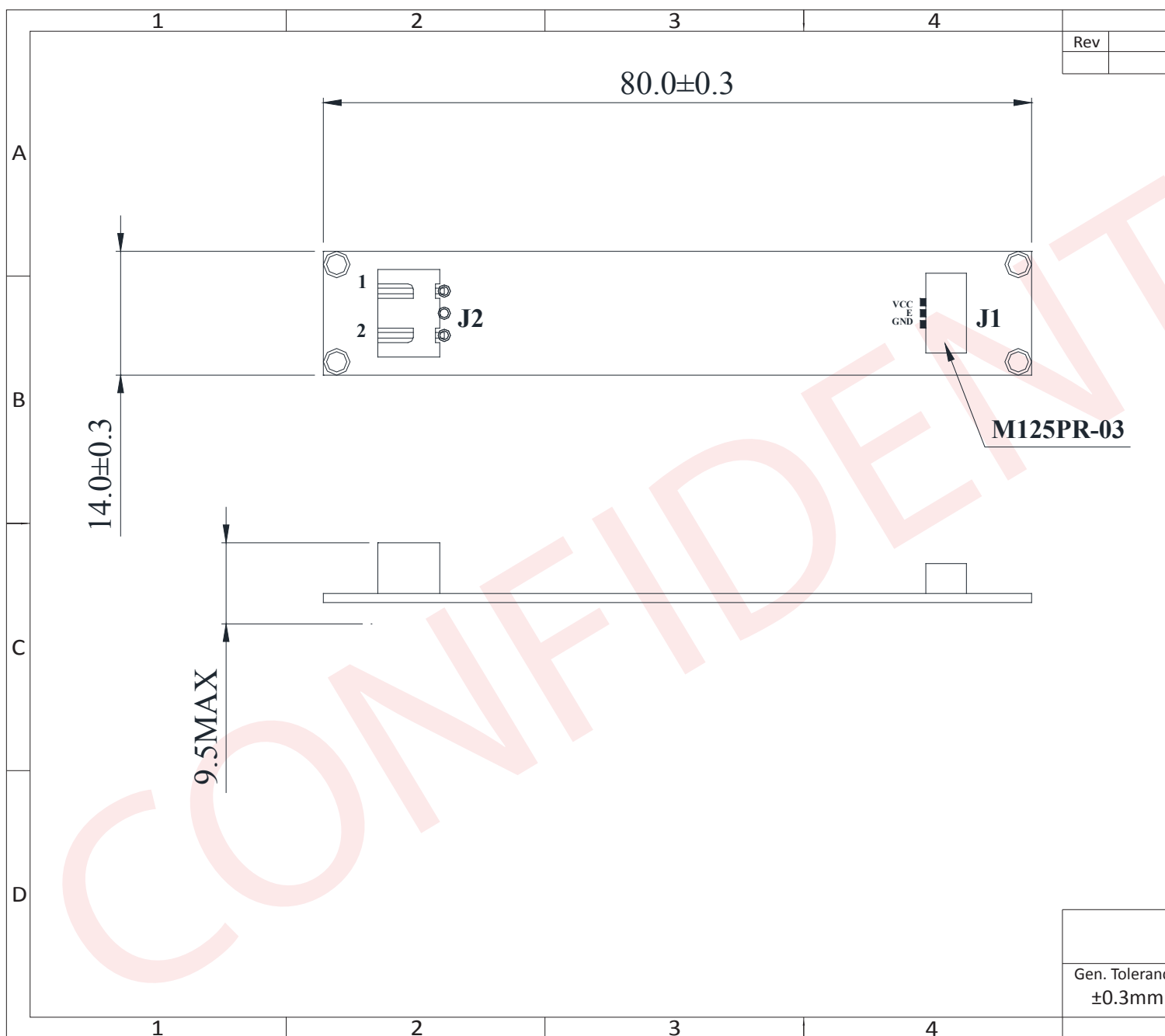
## J2 Pin Description (output)

Pin No.	Symbol	External Connection	Function Description
1	LED-	K	Ground for LED backlight
2	LED+	A	Power for LED backlight

Connector: **S 3B-XH-A**

Connector on display backlight: **XHP-3**

# Mechanical Drawing



The drawing contained herein is the exclusive property of Newhaven Display International, Inc. and shall not be copied, reproduced, and/or

## X-ON Electronics

Largest Supplier of Electrical and Electronic Components

*Click to view similar products for [LED Backlighting category](#):*

*Click to view products by [Newhaven Display manufacturer](#):*

Other Similar products are found below :

[SSB-COB7540GW](#) [SSB-DL6528SRW](#) [SSB-CEL8040UWW](#) [8718696543603](#) [8718696711033](#) [0025 INT NATURAL BLUE](#) [0100 INT CLASSIC GLACIER WHITE](#) [0100 INT EXTREME ORANGE](#) [0100 INT NATURAL BLUE](#) [0200 INT EXTREME BLUE GREEN](#) [30531](#) [30565](#) [4052899326453](#) [44865WFL](#) [44892WFL](#) [JDR20W38 E14](#) [44860WFL](#) [44870WFL](#) [MR16 60ST 20W](#) [MR16 60ST 50W](#) [64695 ECO](#) [64698 ECO](#) [64701 ECO](#) [64702 ECO](#) [64760](#) [44890WFL](#) [SL2CD](#) [SKU 165](#) [SKU 167](#) [SKU 193](#) [SKU 194](#) [SKU 203](#) [4052899973428](#) [8718696497586](#) [8718696537015](#) [8718696728352](#) [8718291787051](#) [8727900964073](#) [8727900964271](#) [8727900964295](#) [8727900964479](#) [8727900964516](#) [8727900964875](#) [DSD 1000](#) [DSD 2000](#) [EA LED40X33-ERW](#) [EB8004](#) [EB8005](#) [EB8006](#) [EB8007](#)