

NHD-5.7F-LED Driver

LED Backlight Driver

RoHS Compliant

Newhaven Display International, Inc.

2511 Technology Drive, Suite 101

Elgin IL, 60124

Ph: 847-844-8795 Fax: 847-844-8796

www.newhavendisplay.com

nhtech@newhavendisplay.com

nhsales@newhavendisplay.com

Document Revision History

Revision	Date	Description	Changed by
0	07/28/2010	Initial Release	MC

Functions and Features

- HIMAX HA7106 LED Driver
- 5V power supply input for 23.5V output, for **NHD-5.7-640480WF** series displays

ELECTRICAL CHARACTERISTICS

Parameter	Symbol	Condition	Min	Typ	Max	Unit
Operating Temperature Range	-	Absolute Max	-20	25	70	°C
Storage Temperature Range	-	Absolute Max	-30	25	85	°C
Input Voltage	VDD	-	4.5	5.0	5.5	V
Supply Current	IDD	VDD=5V	289	305	311	mA
Output Current	Iout	VDD=5V	-	58.6	-	mA
Output Voltage	Vout	VDD=5V	-	23.5	-	V

J1 Pin Description (user input)

Pin No.	Symbol	External Connection	Function Description
1	GND	Power Supply	Ground for LED driver circuit
2	VDD	Power Supply	Power Supply for LED driver circuit

Connector: **2.54mm pitch through-holes**

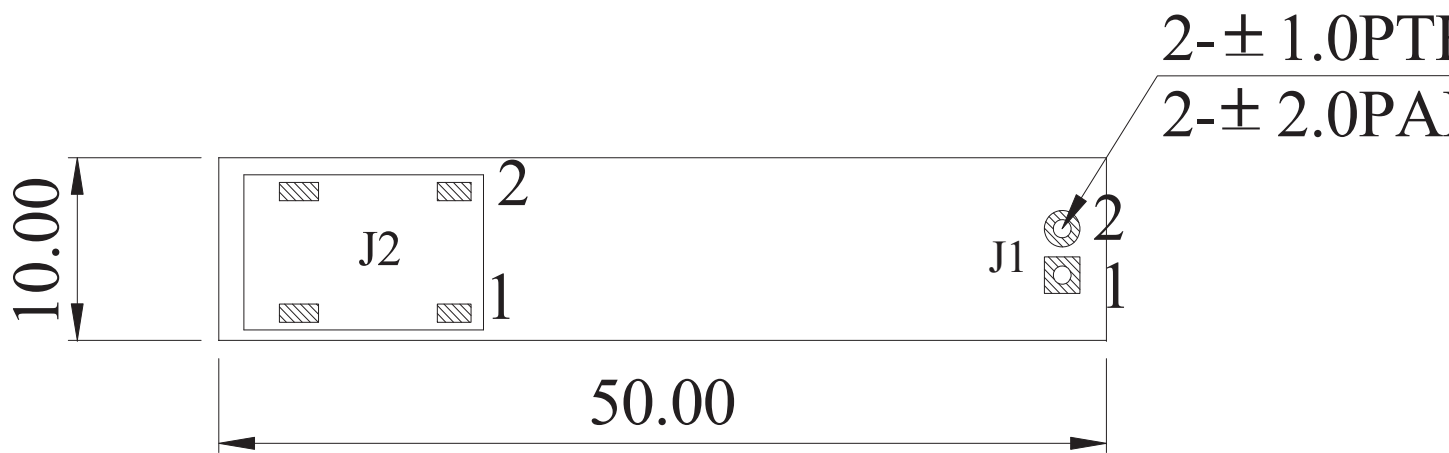
J2 Pin Description (output)

Pin No.	Symbol	External Connection	Function Description
1	LED-	K	Ground for LED backlight
2	LED+	A	Power for LED backlight

Connector: **SM 02B-BHSS-1**

Connector on display backlight: **BHSR-02VS-1**

Mechanical Drawing



J2

PIN NO.	SYMBOL
1	B/L -
2	B/L +

J1

PIN NO.	SYMBOL
1	V _{SS}
2	+5V

New

NHD

X-ON Electronics

Largest Supplier of Electrical and Electronic Components

Click to view similar products for [LED Backlighting](#) category:

Click to view products by [Newhaven Display](#) manufacturer:

Other Similar products are found below :

[SSB-COB7540GW](#) [SSB-DL6528SRW](#) [SSB-CEL8040UWW](#) [8718696543603](#) [8718696711033](#) [0025 INT NATURAL BLUE](#) [0100 INT CLASSIC GLACIER WHITE](#) [0100 INT EXTREME ORANGE](#) [0100 INT NATURAL BLUE](#) [0200 INT EXTREME BLUE GREEN](#) [30531](#) [30565](#) [4052899326453](#) [44865WFL](#) [44892WFL](#) [JDR20W38 E14](#) [44860WFL](#) [44870WFL](#) [MR16 60ST 20W](#) [MR16 60ST 50W](#) [64695 ECO](#) [64698 ECO](#) [64701 ECO](#) [64702 ECO](#) [64760](#) [44890WFL](#) [SL2CD](#) [SKU 165](#) [SKU 167](#) [SKU 193](#) [SKU 194](#) [SKU 203](#) [4052899973428](#) [8718696497586](#) [8718696537015](#) [8718696728352](#) [8718291787051](#) [8727900964073](#) [8727900964271](#) [8727900964295](#) [8727900964479](#) [8727900964516](#) [8727900964875](#) [DSD 1000](#) [DSD 2000](#) [EA LED40X33-ERW](#) [EB8004](#) [EB8005](#) [EB8006](#) [EB8007](#)