



UM90011

NEVB21-USBC1 evaluation board

Rev. 1 — 9 March 2022

user manual

Document information

Information	Content
Keywords	USB Type-C, ESD Protection, TrEOS, USB3.2, HDMI 2.1, low capacitance, signal integrity
Abstract	This user manual gives guidance on how to use the NEVB21-USBC1 evaluation board

1. Introduction

When looking for the 'ideal' ESD protection solution for high-speed lines, there are three main challenges - signal integrity, system-level ESD robustness and footprint. Addressing signal integrity, we need an ESD protection device with low capacitance but also low inductance, which is quite often overlooked. From a system-level ESD robustness perspective, a low clamping voltage is becoming more important than robustness of the ESD protection device itself. Surge robustness of the protection device has become important due to potential fault conditions, where data lines might be shorted with supply lines.

Nexperia's new DFN0603-3 package provides two protection devices in one housing, keeping the benefits of TrEOS technology, very low capacitance, very low clamping and very high robustness, and also showing outstanding RF performance on very fast data lines. The DFN0603-3 series offers capacitance down to 0.2 pF, surge robustness up to 11 A and a clamping voltage of 4.4 V for a 8 A 8/20 μ s surge. The benefit of this 2-in-1 solution is shown in [Fig. 1](#).

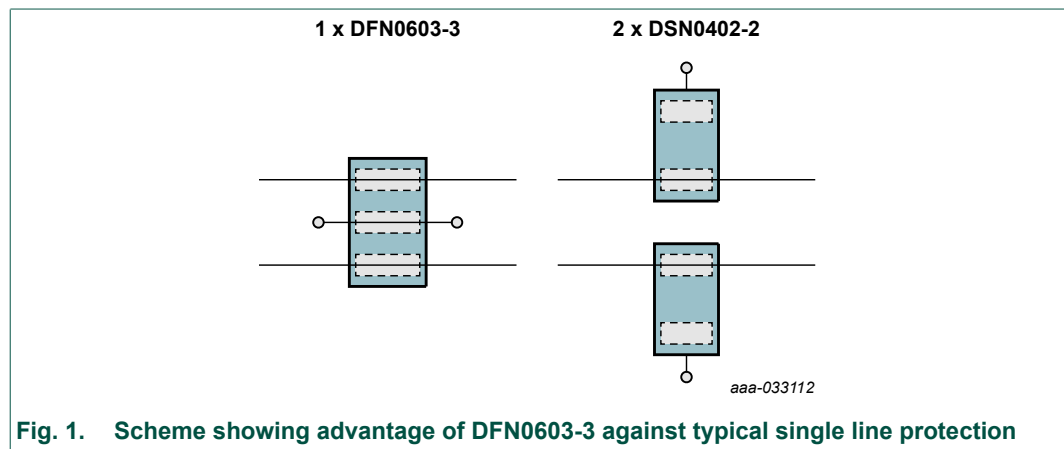


Fig. 1. Scheme showing advantage of DFN0603-3 against typical single line protection

Since it is crucial for the end application to pass performance and compliance testing according to IEC61000, a well-designed platform is needed in advance. Nexperia's evaluation board **NEVB21-USBC1** is the perfect test vehicle for direct benchmarking of a complete USB Type-C interface. Beside super speed data line protection it features protection of all the other relevant data, control and supply lines in USB Type-C. A complete overview is given in [Fig. 2](#).

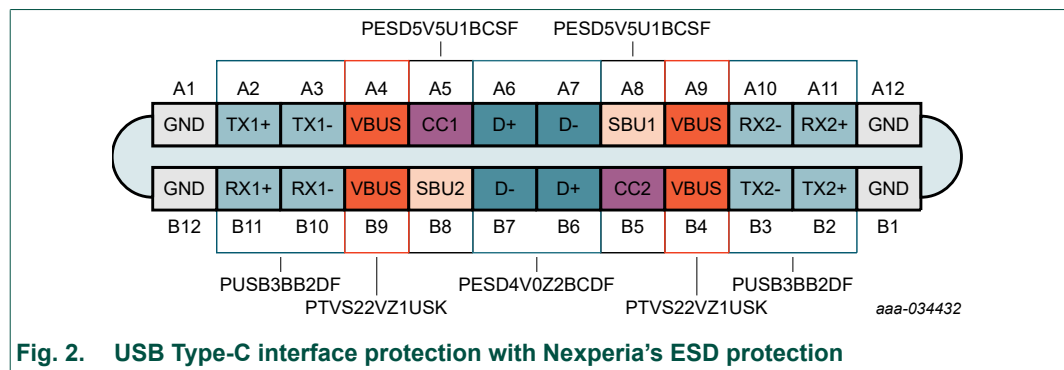


Fig. 2. USB Type-C interface protection with Nexperia's ESD protection

This user manual provides guidance on how utilize the NEVB21-USBC1.

2. Evaluation board description

Nexperia's **NEVB21-USBC1** is designed to demonstrate the USB Type-C functionality as a plug and play solution. To offer good RF performance the board is designed to keep parasitics to an absolute minimum allowing the super speed lines (TX/RX) to have maximum bandwidth. For this reason additional USB Type-C breakout boards are needed if surge or burst tests (according to IEC61000) are conducted. Top side and bottom side are designed symmetrically. The top view is shown in [Fig. 3](#).

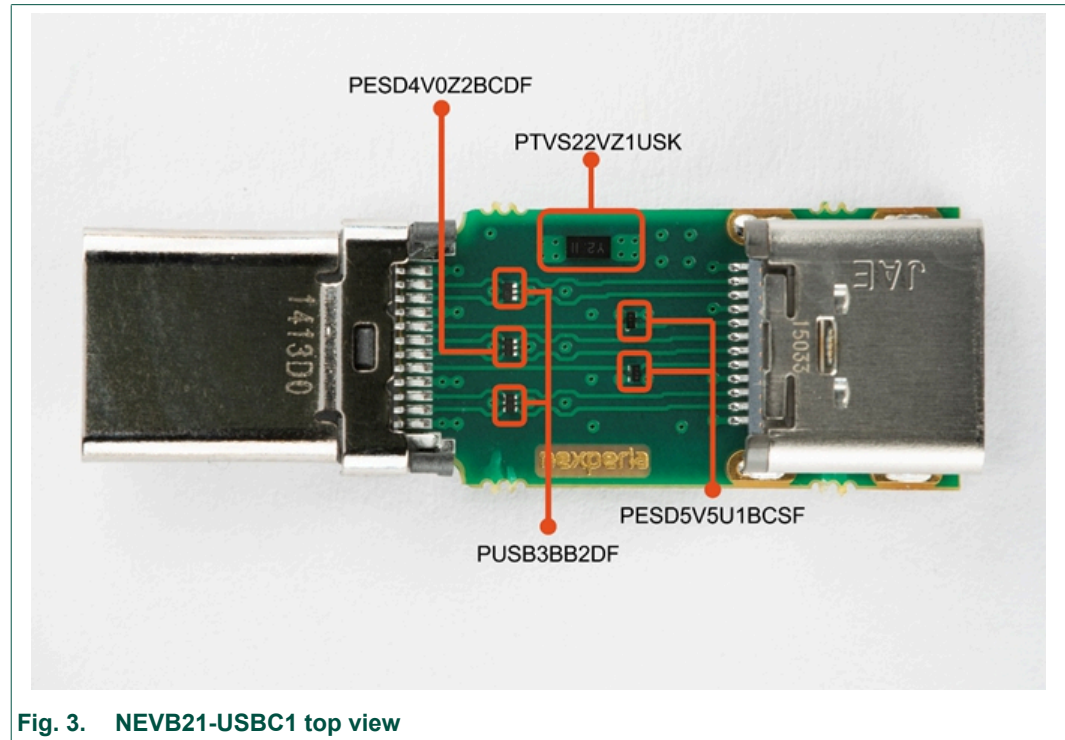


Fig. 3. NEVB21-USBC1 top view

The evaluation board features the **PUSB3BB2DF** which is a symmetrical bidirectional ESD protection diode array with 3 ESD protection diodes in a single DFN0603-3 package. As mentioned in the beginning it comes in the DFN0603-3 footprint where 2 ESD protection diodes are realized in one package. It is specially designed to comply with Thunderbolt, USB 3.2 (data rates >5 Gbps) and HDMI 2.1 data line requirements to provide full signal integrity and at the same time best in class protection. To protect all RX/TX lines four **PUSB3BB2D** are needed. For the D+ and D- lines (USB 2.0 lines) the **PESD4V0Z2BCDF** is chosen. Since it comes in the DFN0603-3 package as well and supports latest USB and HDMI standards. Two of **PESD4V0Z2BCDF** are needed for the D+/D- lines in the USB Type-C interface. It should be highlighted at this point that the middle pin must be connected to signal ground as is shown in [Fig. 4](#).

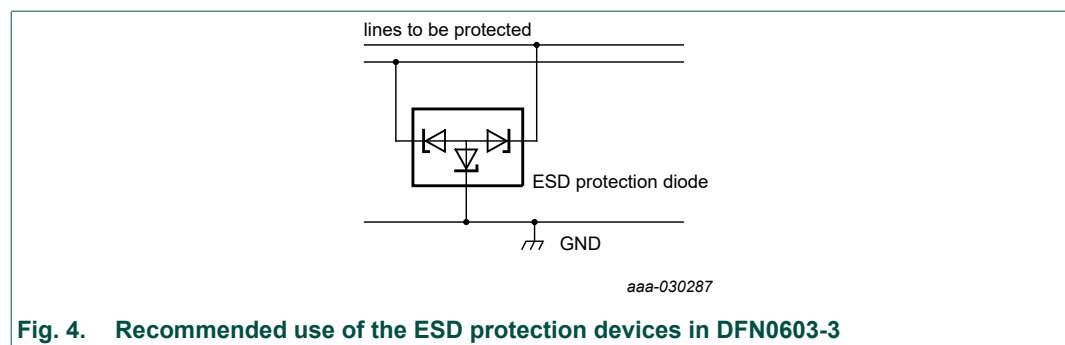


Fig. 4. Recommended use of the ESD protection devices in DFN0603-3

For the CC lines (used to establish and manage the Source-to-Sink connection e.g. cable orientation, Type-C current modes, Power delivery etc.) and the SBU lines (used for Alternate mode especially for lower speed side band signals) the **PESD5V5U1BCSF** is used as bidirectional

protection device. These device are suitable for very sensitive single interface line as they come with ultra-low leakage current (<1 nA). Since there are two SBU and two CC lines in an interface four **PESD5V5U1BCSF** are needed for full protection.

For the BUS supply line VBUS a transient voltage suppressor diode which supports 60 W power supply (all 4 VBUS pins combined) is needed. For protecting VBUS **PTVS22VZ1USK** is chosen. It comes with a rated peak pulse power of 200 W (10/1000 μ s pulse) in robust and compact housing (DSN1608-2).

3. Setup and results

For quick start just place the NEVB21-USBC1 between a Host device (e.g. computer) and a Client device (e.g. storage device supporting USB3.2) as shown in Fig. 5. The easiest way is to stream or copy a large file like a 4k video directly on or to the host device from the storage device.

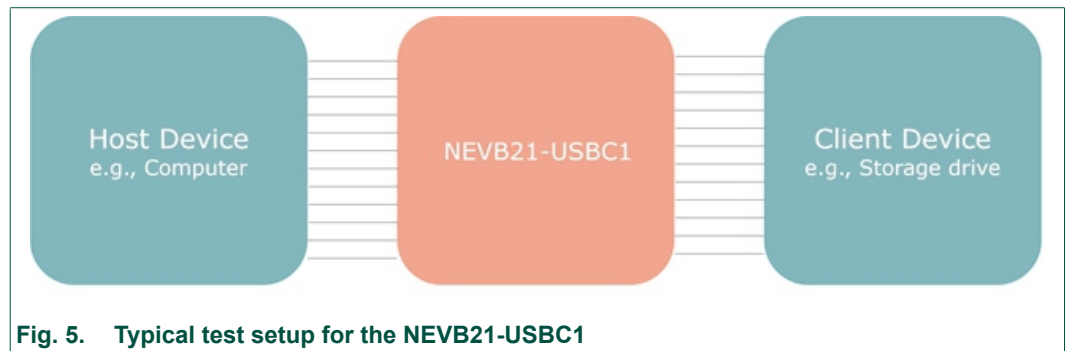


Fig. 5. Typical test setup for the NEVB21-USBC1

In Fig. 6 and Fig. 7, the eye diagram of a transmission on the super speed lines with a data rate 10 Gbps (USB3.2) is shown. Fig. 7 shows the transmission without the protection device and Fig. 6 with the **PUSB3BB2DF**. The eye opening height in both cases is nearly equal. This emphasizes an outstanding RF performance of the **PUSB3BB2DF**.

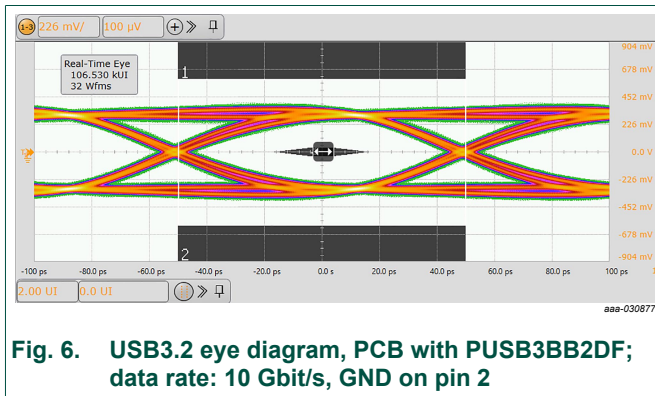


Fig. 6. USB3.2 eye diagram, PCB with PUSB3BB2DF; data rate: 10 Gbit/s, GND on pin 2

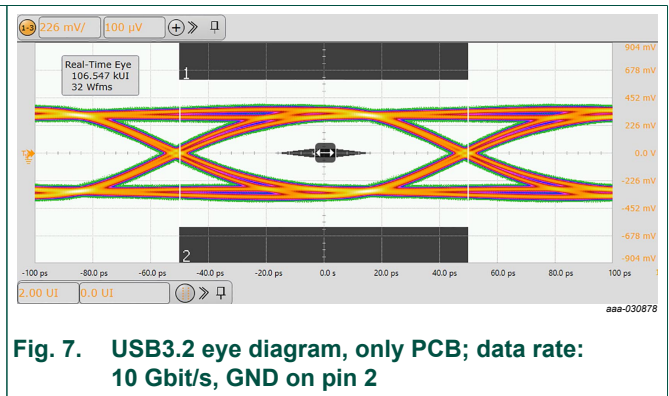


Fig. 7. USB3.2 eye diagram, only PCB; data rate: 10 Gbit/s, GND on pin 2

To evaluate the ESD contact discharge performance of the **PUSB3BB2DF** the ESD pulse transient response test according to IEC6100-4-2 was performed. In Fig. 8 the transient response for contact discharge of ± 15 kV is shown. Here the outstanding fast reaction can be clearly seen. After 100 ns the transient pulse is completely attenuated.

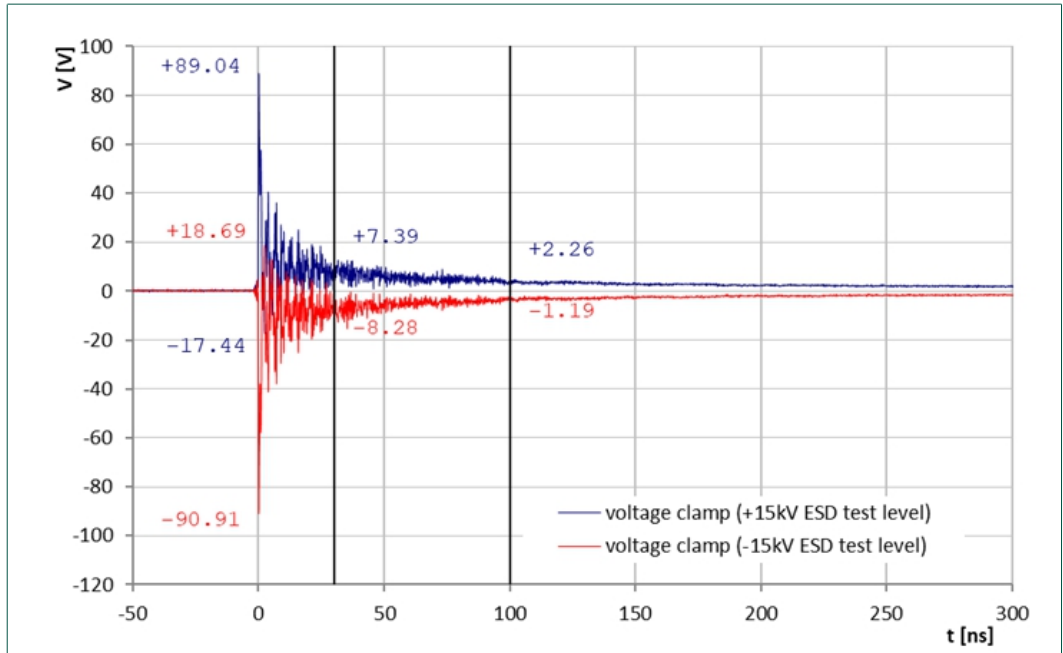


Fig. 8. ESD pulse transient response of the DUT (contact discharge of ±15 kV) according to IEC 61000-4-2

In [Fig. 9](#) the dynamic resistance is shown. Transmission Line Pulse measurement, shot TLP, is used to record the data. The **PUSB3BB2DF** features a low trigger voltage and a deep snap back behavior of the device. This way best in class protection can be obtained.

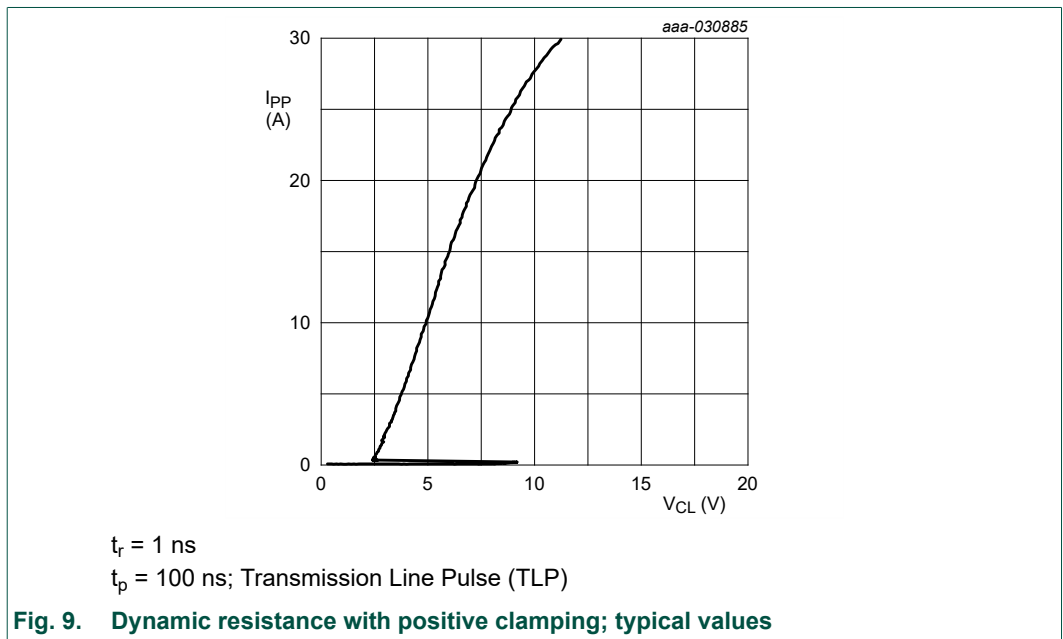


Fig. 9. Dynamic resistance with positive clamping; typical values

4. Schematic

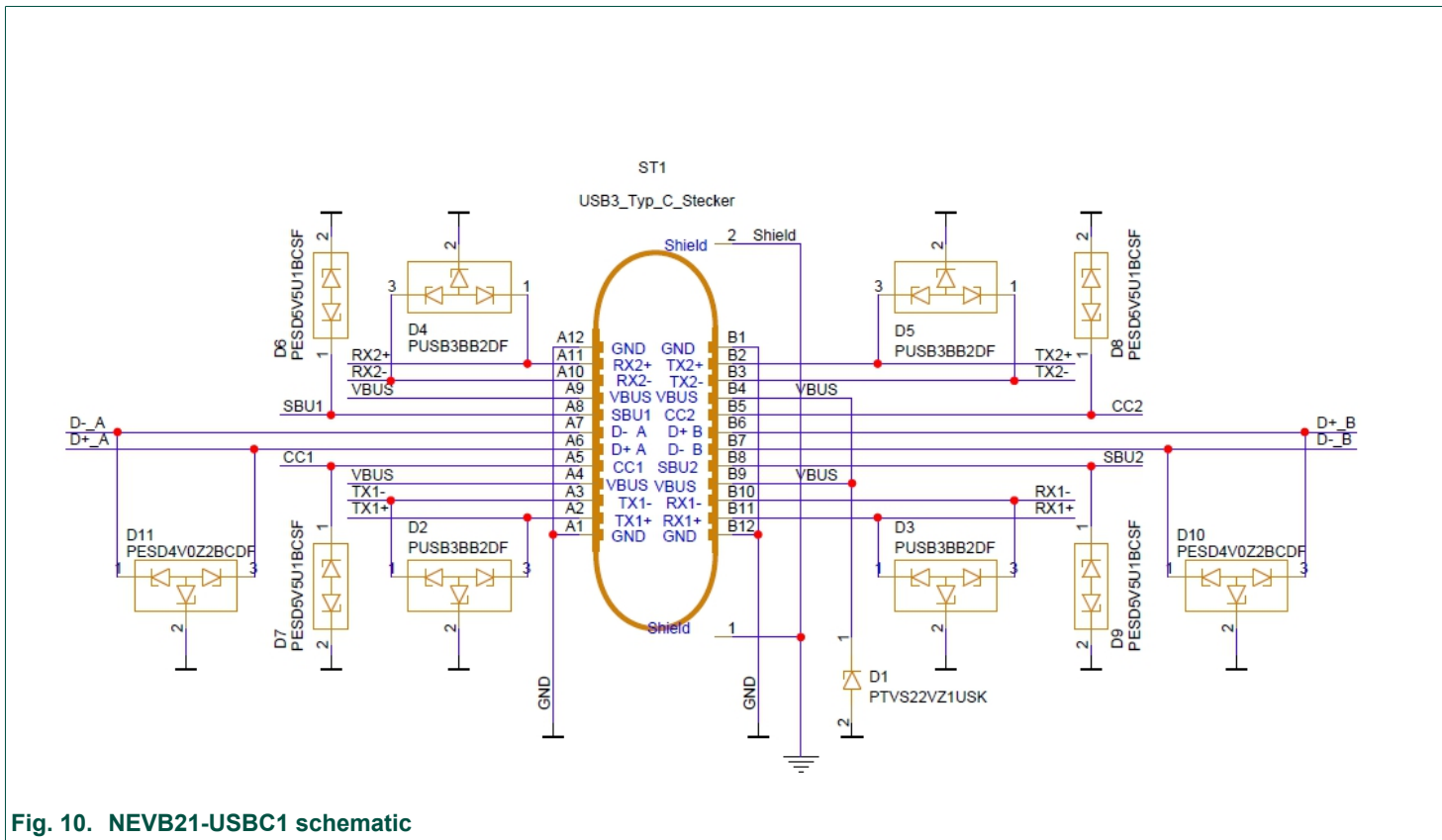


Fig. 10. NEVB21-USBC1 schematic

5. Layout

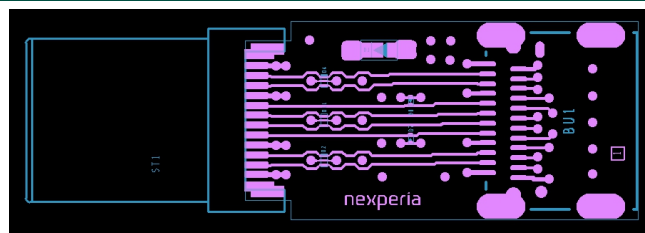


Fig. 11. 11th Top layer with Top silkscreen

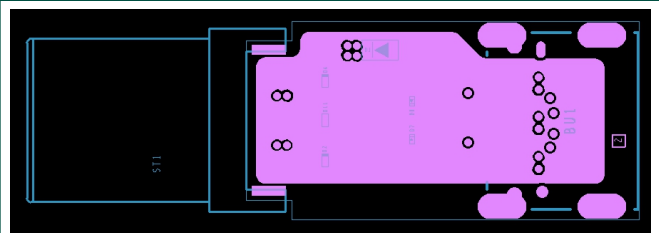


Fig. 12. Layer 2

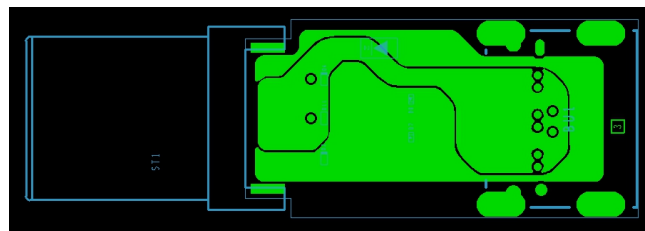


Fig. 13. Layer 3

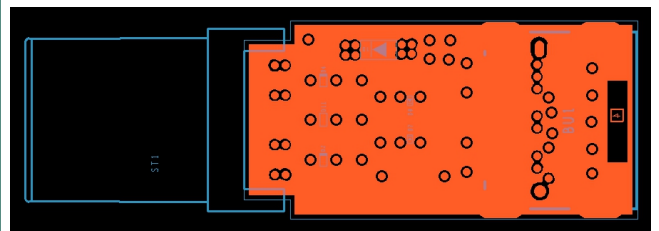


Fig. 14. Layer 4

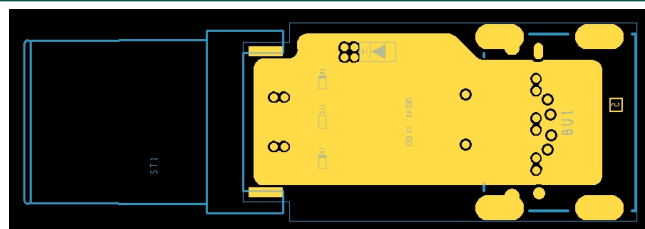


Fig. 15. Layer 5

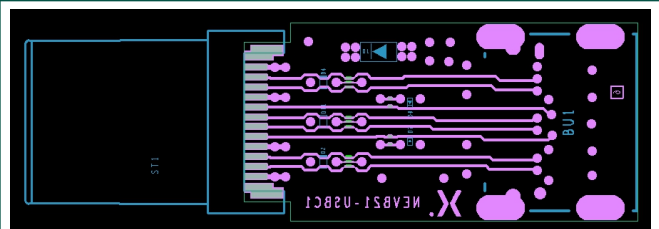


Fig. 16. Bottom layer with bottom silkscreen

6. Revision history

Table 1. Revision history

Revision number	Date	Description
UM90011 v.1	20220309	Initial version

7. Legal information

Definitions

Draft — The document is a draft version only. The content is still under internal review and subject to formal approval, which may result in modifications or additions. Nexperia does not give any representations or warranties as to the accuracy or completeness of information included herein and shall have no liability for the consequences of use of such information.

Disclaimers

Limited warranty and liability — Information in this document is believed to be accurate and reliable. However, Nexperia does not give any representations or warranties, expressed or implied, as to the accuracy or completeness of such information and shall have no liability for the consequences of use of such information. Nexperia takes no responsibility for the content in this document if provided by an information source outside of Nexperia.

In no event shall Nexperia be liable for any indirect, incidental, punitive, special or consequential damages (including - without limitation - lost profits, lost savings, business interruption, costs related to the removal or replacement of any products or rework charges) whether or not such damages are based on tort (including negligence), warranty, breach of contract or any other legal theory.

Notwithstanding any damages that customer might incur for any reason whatsoever, Nexperia's aggregate and cumulative liability towards customer for the products described herein shall be limited in accordance with the Terms and conditions of commercial sale of Nexperia.

Right to make changes — Nexperia reserves the right to make changes to information published in this document, including without limitation specifications and product descriptions, at any time and without notice. This document supersedes and replaces all information supplied prior to the publication hereof.

Suitability for use — Nexperia products are not designed, authorized or warranted to be suitable for use in life support, life-critical or safety-critical systems or equipment, nor in applications where failure or malfunction of an Nexperia product can reasonably be expected to result in personal injury, death or severe property or environmental damage. Nexperia and its suppliers accept no liability for inclusion and/or use of Nexperia products in such equipment or applications and therefore such inclusion and/or use is at the customer's own risk.

Applications — Applications that are described herein for any of these products are for illustrative purposes only. Nexperia makes no representation or warranty that such applications will be suitable for the specified use without further testing or modification.

Customers are responsible for the design and operation of their applications and products using Nexperia products, and Nexperia accepts no liability for any assistance with applications or customer product design. It is customer's sole responsibility to determine whether the Nexperia product is suitable and fit for the customer's applications and products planned, as well as for the planned application and use of customer's third party customer(s). Customers should provide appropriate design and operating safeguards to minimize the risks associated with their applications and products.

Nexperia does not accept any liability related to any default, damage, costs or problem which is based on any weakness or default in the customer's applications or products, or the application or use by customer's third party customer(s). Customer is responsible for doing all necessary testing for the customer's applications and products using Nexperia products in order to avoid a default of the applications and the products or of the application or use by customer's third party customer(s). Nexperia does not accept any liability in this respect.

Export control — This document as well as the item(s) described herein may be subject to export control regulations. Export might require a prior authorization from competent authorities.

Translations — A non-English (translated) version of a document is for reference only. The English version shall prevail in case of any discrepancy between the translated and English versions.

Trademarks

Notice: All referenced brands, product names, service names and trademarks are the property of their respective owners.

Contents

1. Introduction.....	2
2. Evaluation board description.....	3
3. Setup and results.....	4
4. Schematic.....	6
5. Layout.....	7
6. Revision history.....	7
7. Legal information.....	8

© Nexperia B.V. 2022. All rights reserved

For more information, please visit: <http://www.nexperia.com>
For sales office addresses, please send an email to: salesaddresses@nexperia.com
Date of release: 9 March 2022

X-ON Electronics

Largest Supplier of Electrical and Electronic Components

Click to view similar products for [Power Management IC Development Tools](#) category:

Click to view products by [Nexperia](#) manufacturer:

Other Similar products are found below :

[EVAL-ADM1168LQEBZ](#) [EVB-EP5348UI](#) [MIC23451-AAAYFL EV](#) [MIC5281YMME EV](#) [DA9063-EVAL](#) [ADP122-3.3-EVALZ](#) [ADP130-0.8-EVALZ](#) [ADP130-1.2-EVALZ](#) [ADP130-1.5-EVALZ](#) [ADP130-1.8-EVALZ](#) [ADP1714-3.3-EVALZ](#) [ADP1716-2.5-EVALZ](#) [ADP1740-1.5-EVALZ](#) [ADP1752-1.5-EVALZ](#) [ADP1828LC-EVALZ](#) [ADP1870-0.3-EVALZ](#) [ADP1871-0.6-EVALZ](#) [ADP1873-0.6-EVALZ](#) [ADP1874-0.3-EVALZ](#) [ADP1882-1.0-EVALZ](#) [ADP199CB-EVALZ](#) [ADP2102-1.25-EVALZ](#) [ADP2102-1.875EVALZ](#) [ADP2102-1.8-EVALZ](#) [ADP2102-2-EVALZ](#) [ADP2102-3-EVALZ](#) [ADP2102-4-EVALZ](#) [ADP2106-1.8-EVALZ](#) [ADP2147CB-110EVALZ](#) [AS3606-DB](#) [BQ24010EVM](#) [BQ24075TEVM](#) [BQ24155EVM](#) [BQ24157EVM-697](#) [BQ24160EVM-742](#) [BQ24296MEVM-655](#) [BQ25010EVM](#) [BQ3055EVM](#) [NCV891330PD50GEVB](#) [ISLUSBI2CKIT1Z](#) [LM2744EVAL](#) [LM2854EVAL](#) [LM3658SD-AEV/NOPB](#) [LM3658SDEV/NOPB](#) [LM3691TL-1.8EV/NOPB](#) [LM4510SDEV/NOPB](#) [LM5033SD-EVAL](#) [LP38512TS-1.8EV](#) [EVAL-ADM1186-1MBZ](#) [EVAL-ADM1186-2MBZ](#)