

- Notes:
- Material:
 - Insulator: Glass Filled Polyester, UL94V-0.
 - Contact: Brass.
 - Plating:
 - Contact Area: Gold Plating Over Nickel.
 - Electrical:
 - Voltage Rating: 250V AC/DC.
 - Contact Current Rating: 3Amp Per Pin.
 - Contact Resistance: 20 Milliohms Max.
 - Insulation resistance: 1000 Megohms Min.
 - Dielectric Withstanding Voltage: 1000V r.m.s.
 - Environmental:
 - Temperature Range: -40°C to +105°C.

Part No. Z-2310 1 2 * ** * 0 *

Solder Length
1=3.1

Contacts Type
1=Straight Pin
2=Right Angle

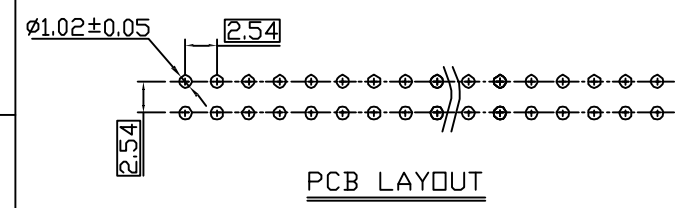
Insulator Color
0=Black
6=Blue
8=Grey

No. Of Positins
See Table

Contact Plated
6=Full Gold Flash
8=Full Gold 5u"

Insulator Material
1=PBT(nextron logo)
3=PA6T(nextron logo)
A=PBT
C=PA6T

PIN	A±0.30	B±0.20	C±0.30
8	17.76	7.62	15.56
10	20.30	10.16	18.1
14	25.38	15.24	23.18
16	27.92	17.78	25.72
18	30.46	20.32	28.26
20	33.00	22.86	30.80
24	38.08	27.94	35.88
26	40.62	30.48	38.42
30	45.70	35.56	43.50
34	50.78	40.64	48.58
40	58.40	48.26	56.20
50	71.10	60.96	68.90
60	83.80	73.66	81.60
64	88.88	78.74	86.68



UNITS ■mm □INCH	NAME: 2.54MM BOX HEADER SOLDER TYPE	nextron NEXTRONICS ENGINEERING CORP.	
	GENERAL TOLERANCES: (UNLESS SPECIFIED)	PART NO: Z-231012****0*	TITLE: CUSTOMER DWG
	APPD:	DWG NO: 010-0000-603	C
	CHKD:	SCALE: 1/1	SHEET: 1/1
	DRAWN:	REV.: E	

REV.	DESCRIPTION	DATE	APPD
E	ECN-140182 Δ =1	12/23/14	Seawen
D	ECN-140151 Δ =1	10/16/14	Seawen
C	ECN-140141 Δ =1	9/23/14	Seawen

X-ON Electronics

Largest Supplier of Electrical and Electronic Components

Click to view similar products for [Headers & Wire Housings](#) category:

Click to view products by [Nextronics](#) manufacturer:

Other Similar products are found below :

[57102-F02-18ULF](#) [58102-G61-06LF](#) [0009485154](#) [009176003701906](#) [0050291907](#) [02.125.8002.8](#) [609-3404](#) [61062-3](#) [622-0430](#) [622-3653LF](#)
[63453-116](#) [636-1030](#) [636-1427](#) [636-3427](#) [636-4007](#) [641938-9](#) [644827-2](#) [65495-038](#) [65692-001LF](#) [65781-018](#) [65781-047](#) [65817-010LF](#)
[65817-015LF](#) [66207-023LF](#) [67016-026LF](#) [67095-007LF](#) [68631-112](#) [68645-018](#) [68648-049](#) [699319-000](#) [70.362.1628.0](#) [70-4210](#) [70-4226B](#)
[70-4853B](#) [707-5020](#) [707-5028](#) [71.350.2428.0](#) [71961-016LF](#) [733-134](#) [754199-000](#) [760-3052](#) [787-8014-00](#) [FCN-367T-T012/H](#) [80.063.4001.1](#)
[800-90-001-10-001000](#) [800-90-010-10-002000](#) [801-43-002-10-013000](#) [801-43-006-10-002000](#) [803-41-018-10-001000](#) [803-43-014-20-](#)
[001000](#)