

- Notes:
- Material:
    - Insulator: Glass Filled Polyester, UL94V-0.
    - Contact: Brass.
  - Plating:
    - Contact Area: Gold Plating Over Nickel.
  - Electrical:
    - Voltage Rating: 250V AC/DC.
    - Contact Current Rating: 3Amp Per Pin.
    - Contact Resistance: 20 Milliohms Max.
    - Insulation resistance: 1000 Megohms Min.
    - Dielectric Withstanding Voltage: 1000V r.m.s.
  - Environmental:
    - Temperature Range: -40°C to +105°C.

Part No. Z-2310 1 2 \* \*\* \* 0 \*

Solder Length  
1=3.1

Contacts Type  
1=Straight Pin  
2=Right Angle

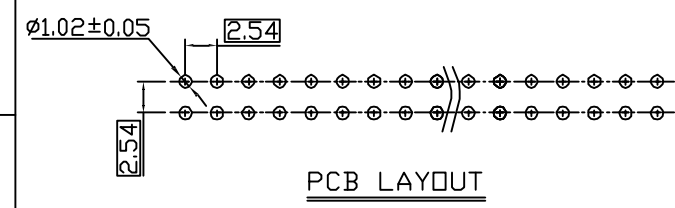
Insulator Color  
0=Black  
6=Blue  
8=Grey

No. Of Positins  
See Table

Contact Plated  
6=Full Gold Flash  
8=Full Gold 5u"

Insulator Material  
1=PBT(nextron logo)  
3=PA6T(nextron logo)  
A=PBT  
C=PA6T

| PIN | A±0.30 | B±0.20 | C±0.30 |
|-----|--------|--------|--------|
| 8   | 17.76  | 7.62   | 15.56  |
| 10  | 20.30  | 10.16  | 18.1   |
| 14  | 25.38  | 15.24  | 23.18  |
| 16  | 27.92  | 17.78  | 25.72  |
| 18  | 30.46  | 20.32  | 28.26  |
| 20  | 33.00  | 22.86  | 30.80  |
| 24  | 38.08  | 27.94  | 35.88  |
| 26  | 40.62  | 30.48  | 38.42  |
| 30  | 45.70  | 35.56  | 43.50  |
| 34  | 50.78  | 40.64  | 48.58  |
| 40  | 58.40  | 48.26  | 56.20  |
| 50  | 71.10  | 60.96  | 68.90  |
| 60  | 83.80  | 73.66  | 81.60  |
| 64  | 88.88  | 78.74  | 86.68  |



|                    |   |   |                        |
|--------------------|---|---|------------------------|
| UNITS<br>■mm □INCH | NAME: 2.54MM BOX HEADER<br>SOLDER TYPE    | nextron<br>NEXTRONICS ENGINEERING CORP. |                        |
|                    | GENERAL TOLERANCES:<br>(UNLESS SPECIFIED) | PART NO:<br>Z-231012****0*              | TITLE:<br>CUSTOMER DWG |
|                    | APPD:                                     | DWG NO:<br>010-0000-603                 | C                      |
|                    | CHKD:                                     | SCALE: 1/1                              | SHEET: 1/1             |
|                    | DRAWN:                                    | REV.: E                                 |                        |

| REV. | DESCRIPTION            | DATE     | APPD   |
|------|------------------------|----------|--------|
| E    | ECN-140182 $\Delta$ =1 | 12/23'14 | Seawen |
| D    | ECN-140151 $\Delta$ =1 | 10/16'14 | Seawen |
| C    | ECN-140141 $\Delta$ =1 | 9/23'14  | Seawen |

## X-ON Electronics

Largest Supplier of Electrical and Electronic Components

*Click to view similar products for [Headers & Wire Housings](#) category:*

*Click to view products by [Nextronics](#) manufacturer:*

Other Similar products are found below :

[57102-F02-18ULF](#) [58102-G61-06LF](#) [0009485154](#) [009176003701906](#) [0050291907](#) [02.125.8002.8](#) [609-3404](#) [61062-3](#) [622-0430](#) [622-3653LF](#)  
[63453-116](#) [636-1030](#) [636-1427](#) [636-3427](#) [636-4007](#) [641938-9](#) [644827-2](#) [65495-038](#) [65692-001LF](#) [65781-018](#) [65781-047](#) [65817-010LF](#)  
[65817-015LF](#) [66207-023LF](#) [67016-026LF](#) [67095-007LF](#) [68631-112](#) [68645-018](#) [68648-049](#) [699319-000](#) [70.362.1628.0](#) [70-4210](#) [70-4226B](#)  
[70-4853B](#) [707-5020](#) [707-5028](#) [71.350.2428.0](#) [71961-016LF](#) [733-134](#) [754199-000](#) [760-3052](#) [787-8014-00](#) [FCN-367T-T012/H](#) [80.063.4001.1](#)  
[800-90-001-10-001000](#) [800-90-010-10-002000](#) [801-43-002-10-013000](#) [801-43-006-10-002000](#) [803-41-018-10-001000](#) [803-43-014-20-](#)  
[001000](#)