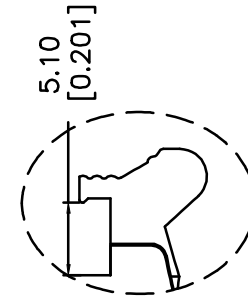


Long Latch  
(L=20.85)



Short Latch  
(L=17.00)

PART NO.

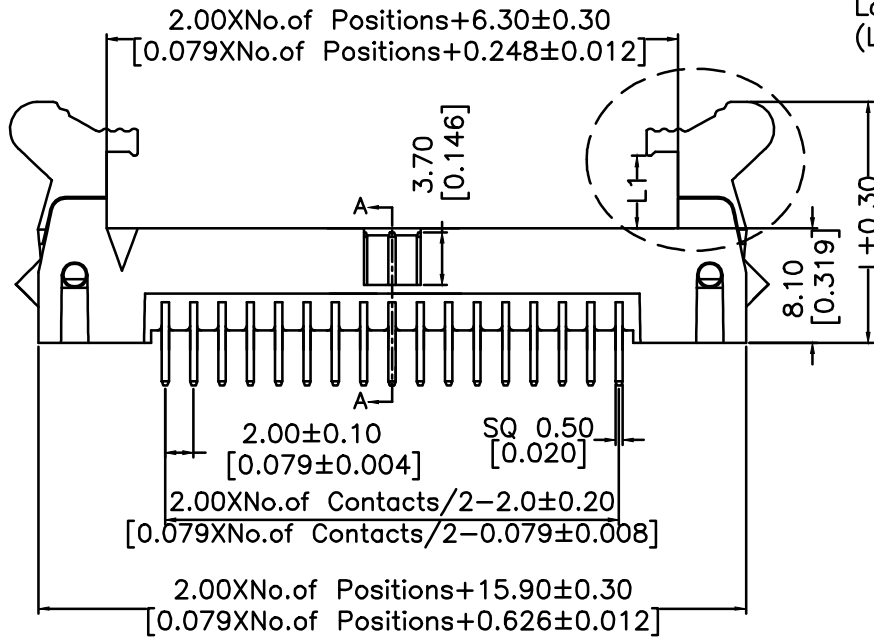
Z-S3220 \*\* S \* B \* \* 1

No. of Pins

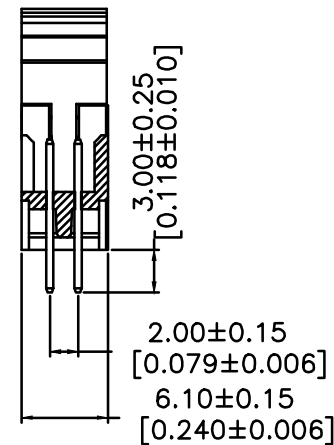
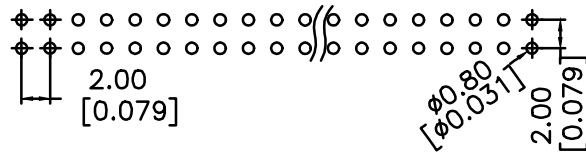
PLATING

- 0=TIN
- 1=GOLD FLASH
- 4=GOLD 10U"
- 5=GOLD 15U"
- 6=GOLD 30U"
- 7=GOLD FLASH/TIN
- A=GOLD 10U"/TIN
- B=GOLD 15U"/TIN
- C=GOLD 30U"/TIN

- Packing
- A=Tray
- T=Tube
- Latch Type
- L=Long Latch
- S=Short Latch



Recommended P.C.B Layout (Top Side)  
(PCB BOARD TOLERANCE ±0.05)



SECTION A-A

NOTE

MATERIAL & FINISH  
INSULATOR: PA6T 30%GF (UL94 V-0)  
CONTACT: BRASS, GOLD OR TIN OVER NI

ELECTRICAL & MECHANICAL

CURRENT RATING: 1.5A  
CONTACT RESISTANCE: 20mΩ MAX.  
INSULATION RESISTANCE: 1000MΩ MIN.  
WITHSTAND VOLTAGE: 500V AC/MINUTE  
OPERATION TEMPERATURE: -40°C TO +105°C

A	NEW RELEASED	12/26/12	
REV.	DESCRIPTION	DATE	APPD

UNITS ■mm □INCH	NAME: 2.00 EJECTOR HEADER 180°	<b>nexttron</b> NEXTRONICS ENGINEERING CORP.	
GENERAL TOLERANCES: (UNLESS SPECIFIED)	PART NO: Z-S3220**S*B**1	TITLE: CUSTOMER DWG	
4 PLACE ± ** ±	APPD:	DWG NO: 010-0000-A75	C
3 PLACE ± ** ±	CHKD:	SCALE: 4 / 1	SHEET: 1 / 1
2 PLACE ± 0.25 ±	DRAWN: 賀秀秋 12/26'12	REV.: A	
1 PLACE ± 0.40 ±			
ANGULAR: X° ± ** X° ±			

## X-ON Electronics

Largest Supplier of Electrical and Electronic Components

*Click to view similar products for [Headers & Wire Housings](#) category:*

*Click to view products by [Nextronics](#) manufacturer:*

Other Similar products are found below :

[57102-F02-18ULF](#) [58102-G61-06LF](#) [0009485154](#) [009176003701906](#) [0050291907](#) [02.125.8002.8](#) [609-3404](#) [61062-3](#) [622-0430](#) [622-3653LF](#)  
[63453-116](#) [636-1030](#) [636-1427](#) [636-3427](#) [636-4007](#) [641938-9](#) [644827-2](#) [65495-038](#) [65692-001LF](#) [65781-018](#) [65781-047](#) [65817-010LF](#)  
[65817-015LF](#) [66207-023LF](#) [67016-026LF](#) [67095-007LF](#) [68631-112](#) [68645-018](#) [68648-049](#) [699319-000](#) [70.362.1628.0](#) [70-4210](#) [70-4226B](#)  
[70-4853B](#) [707-5020](#) [707-5028](#) [71.350.2428.0](#) [71961-016LF](#) [733-134](#) [754199-000](#) [760-3052](#) [787-8014-00](#) [FCN-367T-T012/H](#) [80.063.4001.1](#)  
[800-90-001-10-001000](#) [800-90-010-10-002000](#) [801-43-002-10-013000](#) [801-43-006-10-002000](#) [803-41-018-10-001000](#) [803-43-014-20-](#)  
[001000](#)