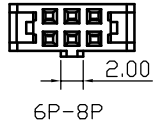
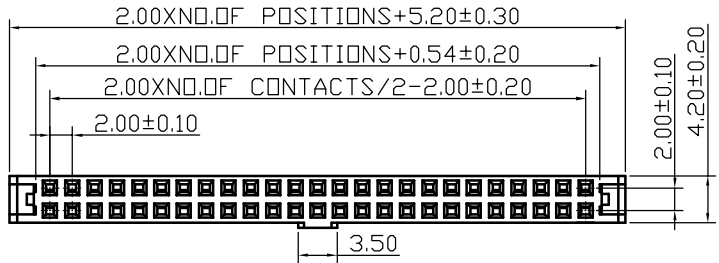


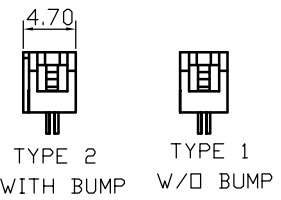
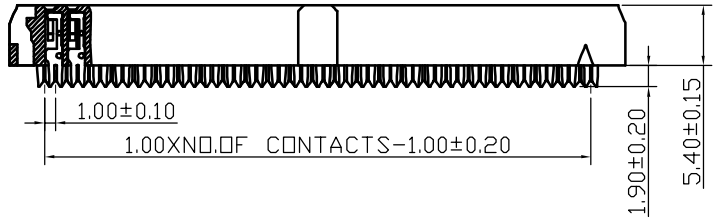
1 2 3 4 5 6 7 8

A  
B  
C  
D  
E



NOTE  
MATERIAL & FINISH  
INSULATOR: PBT 30%GF (UL94 V-0)  
CONTACT: PHOSPHOR BRONZE, GOLD OVER NI

ELECTRICAL & MECHANICAL  
CURRENT RATING: 1.0A  
CONTACT RESISTANCE: 20mΩ MAX.  
INSULATION RESISTANCE: 1000MΩ MIN.  
WITHSTAND VOLTAGE: 500V AC/MINUTE  
OPERATION TEMPERATURE: -40°C TO +105°C



PART NO.

Z-S5222\*\*\* \*\* \* 0 0

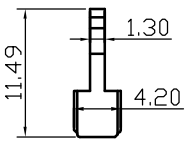
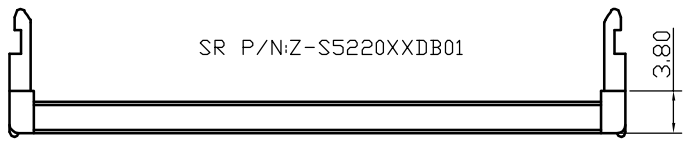
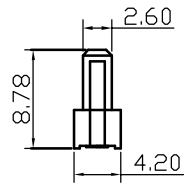
No. of Pins  
06P 08P 10P  
12P 14P 16P  
18P 20P 22P  
24P 26P 30P  
34P 36P 40P  
44P 50P 60P  
64P

SR Height  
0=Standard(8.78mm)  
1=+SR(11.49mm)

PLATING  
1=GOLD FLASH/NI  
4=GOLD 10U"/NI  
5=GOLD 15U"/NI  
6=GOLD 30U"/NI  
S=TIN

Bump  
N=W/O Bump  
W=With Bump

Color Insulator  
B=Black  
G=Grey(472C)



SR P/N: Z-S5220XXDB01

No. of Pins  
06P 08P 10P 12P 14P 16P  
18P 20P 22P 24P 26P 30P  
34P 36P 40P 44P 50P 60P  
64P

TYPE	PART NO.
TYPE 1	Z-S5222***BN*00
TYPE 2	Z-S5222***BW*00

UNITS	
mm	INCH
GENERAL TOLERANCES: (UNLESS SPECIFIED)	
	mm
4 PLACE	± **. ** ±. **
3 PLACE	± 0.15 ±. **
2 PLACE	± 0.25 ±. **
1 PLACE	± 0.40 ±. **
ANGULAR:	X°± 3° X°± **

NAME: 2.00mm IDC SOCKET +SR (ONE SIDE CONTACT)	PART NO: Z-S5222*****00
APPD: 楊海文 11/1'15	CHKD: 廖小瓊 11/1'15
DRAWN: 陳惠枝 11/1'15	

 NEXTRONICS ENGINEERING CORP.	
TITLE: CUSTOMER DWG	
DWG NO: 010-0000-E63	C
SCALE: 4/1	SHEET: 1/1
REV.:	A

A	NEW RELEASED	11/1'15	楊海文
REV.	DESCRIPTION	DATE	APPD

## X-ON Electronics

Largest Supplier of Electrical and Electronic Components

*Click to view similar products for [Headers & Wire Housings](#) category:*

*Click to view products by [Nextronics](#) manufacturer:*

Other Similar products are found below :

[57102-F02-18ULF](#) [58102-G61-06LF](#) [0009485154](#) [009176003701906](#) [0050291907](#) [02.125.8002.8](#) [609-3404](#) [61062-3](#) [622-0430](#) [622-3653LF](#)  
[63453-116](#) [636-1030](#) [636-1427](#) [636-3427](#) [636-4007](#) [641938-9](#) [644827-2](#) [65495-038](#) [65692-001LF](#) [65781-018](#) [65781-047](#) [65817-010LF](#)  
[65817-015LF](#) [66207-023LF](#) [67016-026LF](#) [67095-007LF](#) [68631-112](#) [68645-018](#) [68648-049](#) [699319-000](#) [70.362.1628.0](#) [70-4210](#) [70-4226B](#)  
[70-4853B](#) [707-5020](#) [707-5028](#) [71.350.2428.0](#) [71961-016LF](#) [733-134](#) [754199-000](#) [760-3052](#) [787-8014-00](#) [FCN-367T-T012/H](#) [80.063.4001.1](#)  
[800-90-010-10-002000](#) [801-43-002-10-013000](#) [801-43-006-10-002000](#) [803-41-018-10-001000](#) [803-43-014-20-001000](#) [803-43-024-10-001000](#)