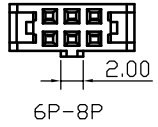
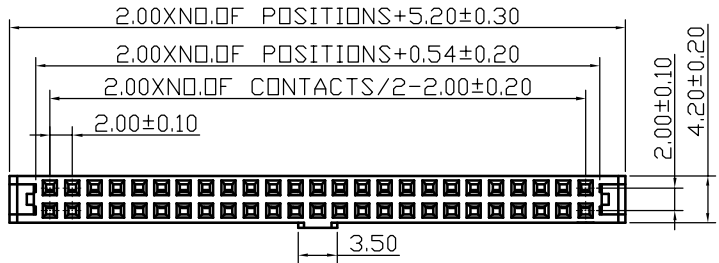


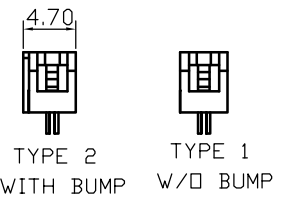
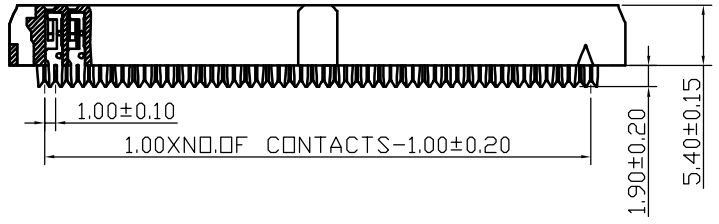
1 2 3 4 5 6 7 8

A
B
C
D
E



NOTE
MATERIAL & FINISH
INSULATOR: PBT 30%GF (UL94 V-0)
CONTACT: PHOSPHOR BRONZE, GOLD OVER NI

ELECTRICAL & MECHANICAL
CURRENT RATING: 1.0A
CONTACT RESISTANCE: 20mΩ MAX.
INSULATION RESISTANCE: 1000MΩ MIN.
WITHSTAND VOLTAGE: 500V AC/MINUTE
OPERATION TEMPERATURE: -40°C TO +105°C



PART NO.

Z-S5222*** ** * 0 0

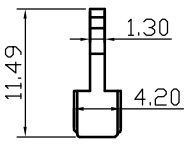
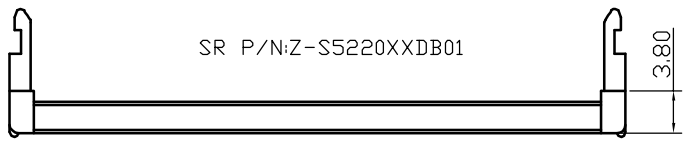
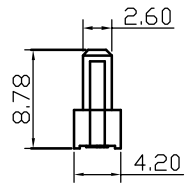
No. of Pins
06P 08P 10P
12P 14P 16P
18P 20P 22P
24P 26P 30P
34P 36P 40P
44P 50P 60P
64P

SR Height
0=Standard(8.78mm)
1=+SR(11.49mm)

PLATING
1=GOLD FLASH/NI
4=GOLD 10U"/NI
5=GOLD 15U"/NI
6=GOLD 30U"/NI
S=TIN

Bump
N=W/O Bump
W=With Bump

Color Insulator
B=Black
G=Grey(472C)



SR P/N: Z-S5220XXDB01

No. of Pins
06P 08P 10P 12P 14P 16P
18P 20P 22P 24P 26P 30P
34P 36P 40P 44P 50P 60P
64P

TYPE	PART NO.
TYPE 1	Z-S5222***BN*00
TYPE 2	Z-S5222***BW*00

UNITS	
■mm	□INCH
GENERAL TOLERANCES: (UNLESS SPECIFIED)	
	mm
4 PLACE	± **. ** ±. **
3 PLACE	± 0.15 ±. **
2 PLACE	± 0.25 ±. **
1 PLACE	± 0.40 ±. **
ANGULAR:	X°± 3° X°± **

NAME: 2.00mm IDC SOCKET +SR (ONE SIDE CONTACT)
PART NO: Z-S5222*****00
APPD: 楊海文 11/1'15
CHKD: 廖小瓊 11/1'15
DRAWN: 陳惠枝 11/1'15

nextron NEXTRONICS ENGINEERING CORP.	
TITLE: CUSTOMER DWG	
DWG NO: 010-0000-E63	
SCALE: 4/1	SHEET: 1/1
REV.:	A

A	NEW RELEASED	11/1'15	楊海文
REV.	DESCRIPTION	DATE	APPD

X-ON Electronics

Largest Supplier of Electrical and Electronic Components

Click to view similar products for [Headers & Wire Housings](#) category:

Click to view products by [Nextronics](#) manufacturer:

Other Similar products are found below :

[57102-F02-18ULF](#) [58102-G61-06LF](#) [0009485154](#) [009176003701906](#) [0050291907](#) [02.125.8002.8](#) [609-3404](#) [61062-3](#) [622-0430](#) [622-3653LF](#)
[63453-116](#) [636-1030](#) [636-1427](#) [636-3427](#) [636-4007](#) [641938-9](#) [65495-038](#) [65692-001LF](#) [65781-018](#) [65781-047](#) [65817-010LF](#) [65817-015LF](#)
[66207-023LF](#) [67016-026LF](#) [67095-007LF](#) [68631-112](#) [68645-018](#) [68648-049](#) [699319-000](#) [70.362.1628.0](#) [70-4210](#) [70-4226B](#) [70-4853B](#) [707-](#)
[5020](#) [707-5028](#) [71.350.2428.0](#) [71961-016LF](#) [733-134](#) [754199-000](#) [760-3052](#) [787-8014-00](#) [FCN-367T-T012/H](#) [80.063.4001.1](#) [800-90-001-](#)
[10-001000](#) [800-90-010-10-002000](#) [801-43-002-10-013000](#) [801-43-006-10-002000](#) [803-41-018-10-001000](#) [803-43-014-20-001000](#)
[803-43-024-10-001000](#)