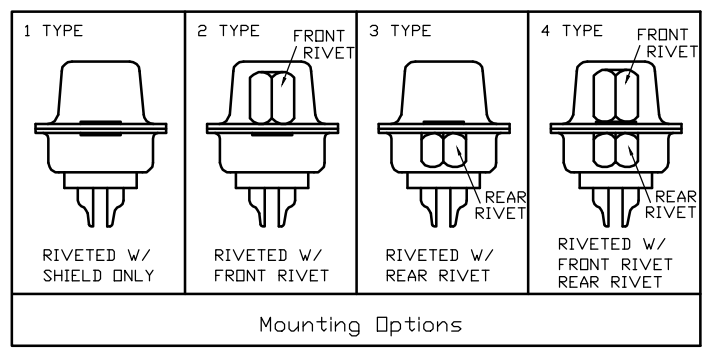
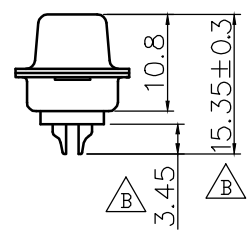
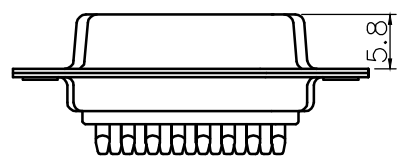
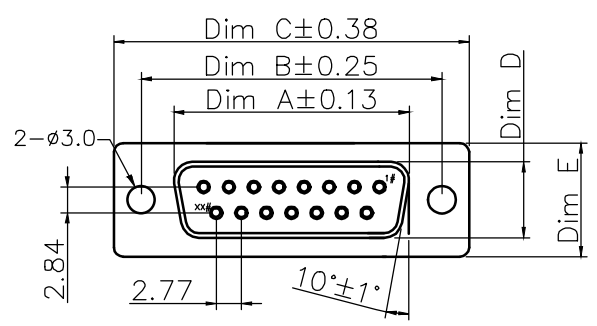


1 2 3 4 5 6 7 8



37P	54.84	63.50	69.32	7.90	12.50
25P	38.38	47.04	53.04	7.90	12.50
15P	24.66	33.32	39.14	7.90	12.50
9P	16.33	24.99	30.81	7.90	12.50
POS. NO.	A	B	C	D	E
	DIMENSION				

**SPECIFICATIONS:**  
 Current rating:3.0A AC/DC  
 Voltage rating:250V AC/DC  
 Contact resistance:30m ohm MAX  
 Insulation resistance:5000M ohm MIN  
 Withstanding voltage:1000V AC for one minute  
 Operating temperature range:-40°C ~ +85°C

**MATERIAL AND FINISH**  
 Insulator:PBT+30%G.F(UL94V-0)  
 Contact:Copper Alloy Nickel Undercoated Selective Gold Plated  
 Sheel:Metal Iron With Tin Plated

PART NO.

Z-SUBDB \* F \* 0 \* \* \* \* \*  
 NO OF CONTACTS ——— \*  
 A=9PIN  
 B=15PIN  
 C=25PIN  
 E=37PIN  
 TYPE ——— \*  
 F=FEMALE  
 MOUNTING OPTIONS ——— \*  
 0=NO ACCESSORY  
 1=RIVETED W/SHIELD ONLY  
 2=RIVETED W/FRONT RIVET  
 3=RIVETED W/REAR RIVET  
 4=RIVETED W/FRONT RIVET REAR RIVET  
 CONTACT MATERIAL ——— \*  
 7=PHOSPHOR BRONZE

LOGO  
 0=NO LOGO  
 2=NEXTRON LOGO  $\Delta$   
 INSULATOR COLOR  
 0=BLACK  
 6=BLUE  
 9=WHITE  
 INSULATOR MATERIAL  
 0=PBT  
 2=NYLON  
 PLATED  
 1=FULL GOLD 1 $\mu$ "  
 7=FULL LIGHT TIN  
 A=GOLD 1 $\mu$ " / LIGHT TIN  
 B=GOLD 3 $\mu$ " / LIGHT TIN  
 C=GOLD 5 $\mu$ " / LIGHT TIN  
 E=GOLD 15 $\mu$ " / LIGHT TIN

正凌精密工业(广东)有限公司  
**2016/7/20**  
 内部资料请勿复印

B	ECN-160074 尺寸&料號代碼變更 $\Delta$ = 3	7/14'16
A4	修正欄位公差	3/4'16
A3	UPDATED	8/12'15
REV.	DESCRIPTION	DATE

UNITS <input checked="" type="checkbox"/> mm <input type="checkbox"/> INCH	NAME: D-SUB 焊接式 PCB 母端	<b>NEXTRON</b> NEXTRONICS ENGINEERING CORP.	
GENERAL TOLERANCES: (UNLESS SPECIFIED)	PART NO: Z-SUBDB*F*07****	TITLE: CUSTOMER DWG	
	APPD: 楊海文 2016/7/20	DWG NO: 010-0000-599	
	CHKD: 廖小瓊 2016/7/15	SCALE: SHEET: REV.: 2/1 1/1 B	
	DRAWN: 何潔賢 2016/7/14		

A2

D-PRD-034

## X-ON Electronics

Largest Supplier of Electrical and Electronic Components

*Click to view similar products for [D-Sub Standard Connectors](#) category:*

*Click to view products by [Nextronics](#) manufacturer:*

Other Similar products are found below :

[56F711-015](#) [LV242999-142T12](#) [015-0339-000](#) [015-0341-000](#) [015-0349-000](#) [015-0350-000](#) [015-0372-008](#) [015-8544-011](#) [015-8755-001](#)  
[017041-0005](#) [020419-0104](#) [012-0467-000](#) [012-9507-114](#) [020745-0008](#) [609-25P](#) [609-9P](#) [M24308/2-23Z](#) [M24308/2-36Z](#) [M24308315F](#)  
[CT0M22-23SS](#) [CT0P14S-5SXS](#) [CT0P22-14PS](#) [CT1E20-19SS](#) [CT2-10SL-3SC](#) [CT2-14S-2PCA34](#) [CT2-16S-17PS](#) [CT2-18-10PS-FMLB-D](#)  
[CT2-18-11PCAU](#) [CT2-18-1PSAUA34](#) [CT2-22-19SC](#) [CT2-22-19SS-A206](#) [CT2-24-2PS](#) [CT2-28-12SC](#) [CT2-28-12SSA232](#) [CT6-10SL-3SC](#)  
[CT6-10SL-4SC](#) [CT6-14S-2SC](#) [CT6-16-12SC](#) [CT6-18-10PSA206](#) [CT6-18-10PSA232](#) [CT6-18-10SSF127A206](#) [CT6-22-10PS](#) [CT6-28-22SS](#)  
[CT6E14S-2S0](#) [CT6E14S-2SC-A206](#) [CT6E14S-5SC](#) [CT6E14SA7SC](#) [CT6E20-14SS](#) [CT6E22-10PS](#) [CT6E22-14PC](#)