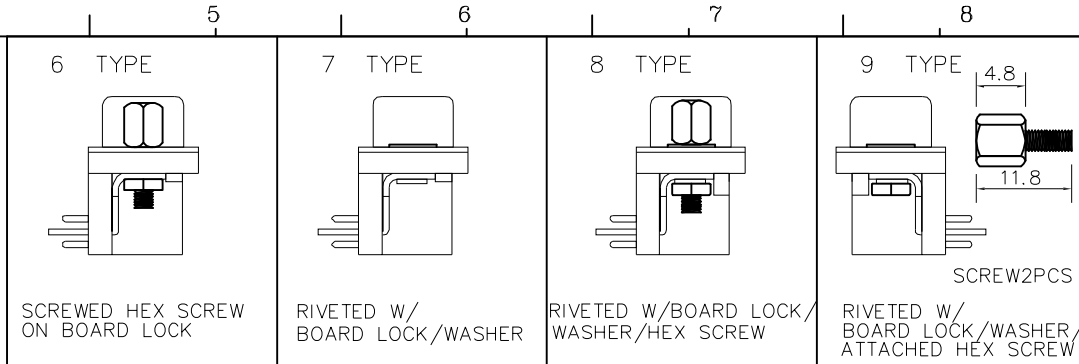
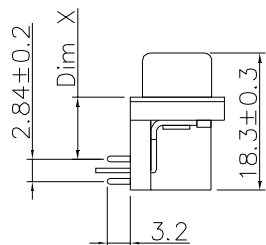


P.C. BOARD LAYOUT

37P	54.83	63.50	69.32	8.08	9.50
25P	38.38	47.04	53.04	8.08	9.50
15P	24.66	33.32	39.14	8.08	9.50
9P	16.33	24.99	30.81	8.08	9.50
POS. NO.	A	B	C	X	Y
	DIMENSION				



Mounting Options

SPECIFICATIONS:

Current rating: 3.0A AC/DC
 Voltage rating: 250V AC/DC
 Contact resistance: 30mohm MAX
 Insulation resistance: 5000Mohm MIN
 Withstanding voltage: 1000V AC for one minute
 Operating temperature range: -40°C~+85°C

MATERIAL AND FINISH

Insulator: PBT+30%G.F(UL94V-0)
 Contact: Copper Alloy Nickel Undercoated
 Selective Gold Plated
 Finish: Metal Iron With Tin Plated

X2		New Release	3/9'11		
REV.	ECN. NO.	DESCRIPTION	DATE	DRAWN	APPD

DESIGN UNITS <input checked="" type="checkbox"/> mm <input type="checkbox"/> INCH		
GENERAL TOLERANCES: (UNLESS SPECIFIED)		
	mm	INCH
4 PLACE	± *	±.
3 PLACE	± *	±.
2 PLACE	± 0.10	±.
1 PLACE	± 0.30	±.
ANGULAR:	X° ± 1°	X' ±

NAME: D-SUB 彎式PCB焊接插座
PART NO: Z-SUBDR***0**00*
APPD:
CHKD:
DRAWN:

 NEXTRONICS ENGINEERING CORP.		
TITLE: CUSTOMER DWG	C	
DWG. NO: 010-0000-573		
SCALE: 2.5/1	SHEET: 1/2	REV.: X2

Ordering Information

Z — SUB — DRXX — X0XX — XX0

Housing Type	
Code	Definition
M	Male
F	Female

Contacts Material	
Code	Definition
2	Brass
7	Phosphor bronze

Insulator material	
Code	Definition
0	PBT
2	NYLON


Insulator color	
Code	Definition
0	Black
6	Blue
9	White

Number of contacts	
Code	Definition
A	9 PIN
B	15 PIN
C	25 PIN
E	37 PIN

Mounting Options	
Code	Definition
6	SCREWED HEX SCREW ON BOARD LOCK
7	RIVETED W/ BOARD LOCK/WASHER
8	RIVETED W/BOARD LOCK/WASHER/HEX SCREW
9	RIVETED W/ BOARD LOCK/WASHER/ ATTACHED HEX SCREW

Contact Plated	
Code	Contact Area
A	Gold 1u"/Light Tin
B	Gold 3u"/Light Tin
C	Gold 5u"/Light Tin
E	Gold 15u"/Light Tin
F	Gold 30u"/Light Tin

REV.	ECN. NO.	DESCRIPTION	DATE	DRAWN	APPD
X2		New Release	3/9'11		

DESIGN UNITS <input checked="" type="checkbox"/> mm <input type="checkbox"/> INCH GENERAL TOLERANCES: (UNLESS SPECIFIED) <table border="1"> <thead> <tr> <th></th> <th>mm</th> <th>INCH</th> </tr> </thead> <tbody> <tr> <td>4 PLACE</td> <td>± *</td> <td>±.</td> </tr> <tr> <td>3 PLACE</td> <td>± *</td> <td>±.</td> </tr> <tr> <td>2 PLACE</td> <td>± 0.10</td> <td>±.</td> </tr> <tr> <td>1 PLACE</td> <td>± 0.30</td> <td>±.</td> </tr> </tbody> </table>		mm	INCH	4 PLACE	± *	±.	3 PLACE	± *	±.	2 PLACE	± 0.10	±.	1 PLACE	± 0.30	±.	NAME: D-SUB 彎式PCB焊接插座 PART NO: Z-SUBDR***0**00* APPD: CHKD: DRAWN:	 NEXTRONICS ENGINEERING CORP. TITLE: CUSTOMER DWG DWG. NO: 010-0000-573 SCALE: 2.5/1 SHEET: 2/2 REV.: X2
	mm	INCH															
4 PLACE	± *	±.															
3 PLACE	± *	±.															
2 PLACE	± 0.10	±.															
1 PLACE	± 0.30	±.															

X-ON Electronics

Largest Supplier of Electrical and Electronic Components

Click to view similar products for [D-Sub Standard Connectors](#) category:

Click to view products by [Nextronics](#) manufacturer:

Other Similar products are found below :

[DCM37S732N](#) [DAM15P500](#) [DEV09S364GTLF](#) [DEM09P032N](#) [DDM50P732N](#) [DAM15S332N](#) [173109-2218](#) [173109-2466](#) [173109-2436](#)
[173109-2435](#) [56F706-005-LI](#) [56F711-015](#) [015-0341-000](#) [015-0372-008](#) [015-8544-011](#) [017041-0005](#) [012-0515-000](#) [012-9507-034](#) [012-9507-114](#) [012-9534-001](#) [020745-0008](#) [609-25P](#) [M24308/2-23Z](#) [M243082310F](#) [M243082410F](#) [M243082411F](#) [M24308/4-21](#) [CT1A18-11PSA206](#)
[CT1N36-5SC](#) [CT2-16S-17PS](#) [CT2-20-15PCAU](#) [CT2-24-12PS](#) [CT2-24-28PSF127A206](#) [CT2-32-9PC](#) [CT6F9767-14-4-14S-5PC](#)
[CT6FA10SL-4PS](#) [CT7-18-10SC](#) [CT7-18-10SCAU](#) [CT7-18-12SCAU](#) [CT7-18-1PC](#) [CT7-18-1PCAU](#) [CT7-18-21SCAU](#) [M83513/01-FC](#)
[M83723/76W24619 L/C](#) [M85049/48-3-2F](#) [69001-865](#) [6STD09PCM99B70X](#) [6STD09SCT99S40X](#) [6STD15PCT99S40X](#)
[6STD15SCM99B30X](#)