

NOTES

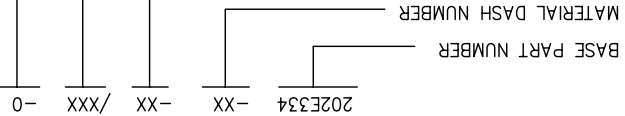
1. ALL DIMENSIONS ARE IN INCHES [MILLIMETERS]

2. DIMENSIONS APPEARING IN TABLE ARE AS FOLLOWS:
 a - AS SUPPLIED
 b - AFTER UNRESTRICTED RECOVERY

COATING (ADHESIVE): IS OPTIONAL
 AS SUPPLIED DIMENSIONS APPEARING IN TABLE ARE FOR UNCOATED PARTS.

DIAMETER WILL BE REDUCED BY .06 MAX. WHEN COATING IS ADDED, ENTRY

4. ORDERING INFORMATION:



COMPATIBILITY CHART

MATERIAL DASH NO.	ADHESIVE (COATING) SLASH NO.	ADHESIVE (COATING) S NO.
-50	N/A	N/A
-51	/86; /164; /180	S-1048; S-1124; S-1030
-71	/42; /86; /180	S-1017; S-1048; S-1030
-770	N/A	N/A
-780	N/A	N/A

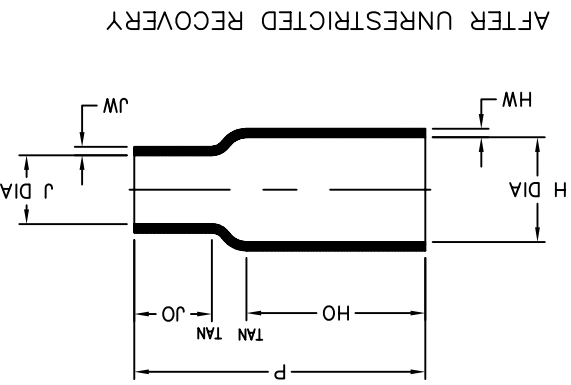
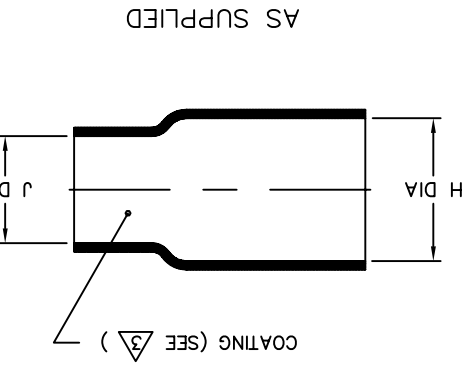


TABLE OF DIMENSIONS

PART DESCRIPTION	H		J		P	JO	TAN TAN	HW	JW	
	MIN	MAX	MIN	MAX						
202E334	.50	.42	[12.7]	[10.7]	2.50	1.62	[41.1]	[63.5]	[15.2]	[1.52]
202E336	.82	.42	[20.8]	[10.7]	2.50	1.62	[41.1]	[63.5]	[15.2]	[1.52]
202E344	.87	.74	[22.1]	[18.8]	2.10	1.10	[27.9]	[53.3]	[2.29]	[1.52]
202E346	.87	.74	[22.1]	[18.8]	2.10	1.10	[27.9]	[53.3]	[2.29]	[1.52]

CUSTOMER DRAWING

UNLESS OTHERWISE SPECIFIED DIMENSIONS ARE IN INCHES. METRIC DIMENSIONS ARE IN BRACKETS.

DEGMAL TOLERANCES
 .XXX ± 0.005
 .XX ± 0.01
 .X ± 0.1
 ° ± 1 DEG.

TYCO ELECTRONICS RESERVES THE RIGHT TO CHANGE THIS DRAWING AT THE DISCRETION OF THE PRODUCT FOR THEIR APPLICATION.

THIRD ANGLE PROJECTION

APPROVED: YUNGUYEN

DRAWN: YUNGUYEN

ROYCHEM MOLDED PARTS
 305 CONSTITUTION DR
 MENLO PARK, CA 94025

Tyco Electronics

SIZE: B
 CODE IDENT. NO.: 06090
 DWG. NO.: 202E334trru346

© 2008-2009 Tyco Electronics Corporation. All rights reserved.
 DO NOT SCALE THIS DRAWING.
 SHEET 1 OF 1

X-ON Electronics

Largest Supplier of Electrical and Electronic Components

Click to view similar products for [Cable Boots](#) category:

Click to view products by [TE Connectivity](#) manufacturer:

Other Similar products are found below :

[618235-000](#) [622A014-3-0](#) [CX4132-000](#) [879103-4](#) [879515-000](#) [889092](#) [982033-2](#) [R280576000](#) [1300830729](#) [MTPSRBCL-C](#) [1811481-1](#)
[200W531-3-0](#) [202A121-386-0](#) [202A142-4-00/42-0](#) [202A163-4-0-CS5067](#) [202B221-13-0](#) [202B231-13-0](#) [202B563-25-07-0](#)
[202C621710CS5361](#) [202D132-4-07/42-0](#) [202D221-4-0-CS5349](#) [202D221-4-26-0](#) [202D263-25-08-0](#) [202D263-4-22/42-0](#) [202D263-4-88-0](#)
[202D921-2542-0](#) [202E336-71-0](#) [202F211-50-22-0-CS8474](#) [202F242-50-05-0](#) [202F242-51-04/164-0](#) [202K121-25-CS-1858-0](#) [202K121-25-](#)
[CS-2062-0](#) [202K132-25-01/225-0CS8387](#) [202K153-3-0186-0](#) [202S132-25-UP-0](#) [203W301-3/42-0](#) [207W613-100/184-0-CS5657](#) [207W623-](#)
[100-01/184-0](#) [207W634-100/184-0-CS5657](#) [207W656-100-01/184-0](#) [207W667-100-01/184-0](#) [207W667-100/184-0](#) [208A011-3-0](#) [208A021-3-](#)
[0](#) [221A011-51164-0-CS7133](#) [222A121-2586](#) [222A152-342-0](#) [222A213-25-0-CS5613](#) [222D221-25-13/86-0](#) [222D232-4-61-0-CS5078](#)