

THIS DRAWING IS UNPUBLISHED.

RELEASED FOR PUBLICATION

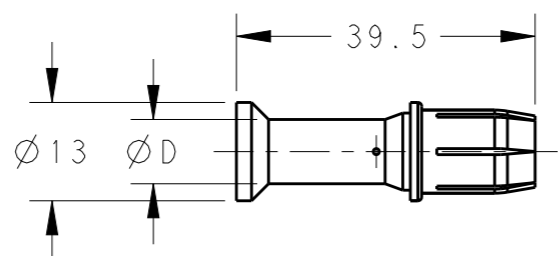
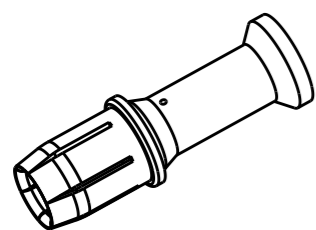
20

© COPYRIGHT 20 BY -

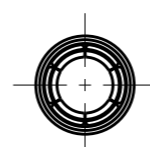
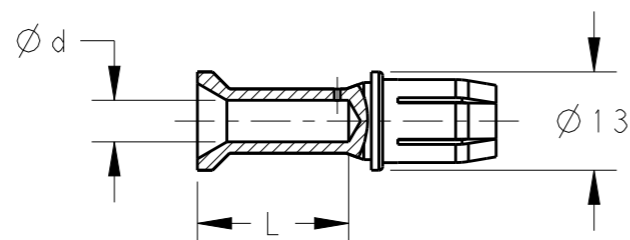
ALL RIGHTS RESERVED.

REVISIONS

P	LTR	DESCRIPTION	DATE	DWN	APVD
	A	INITIAL	25JUN2015	DW	CW



1) Ød=4.3, 5.5, 7.0

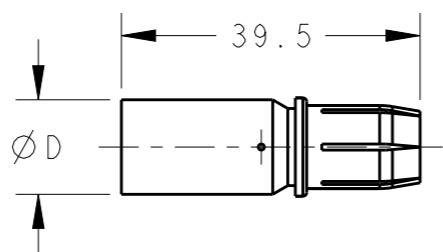
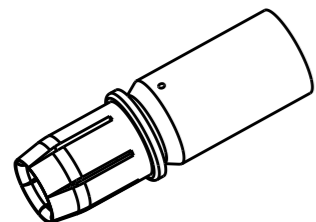


NOTES:

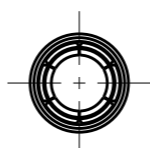
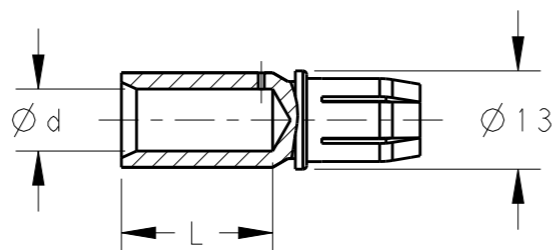
- 1. TECHNICAL CHARACTERISTICS:  
 CONTACT MATERIAL: BRASS  
 SURFACE PLATING:  
 SILVER PLATING:  $\geq 2\mu\text{m}$   
 CONTACT RESISTANCE:  $\leq 0.5\text{m}\Omega$   
 WIRE RANGE: SEE TABLE  
 OPERATION TEMPERATURE:  $-40\sim+125^\circ\text{C}$

注释:

- 1. 技术参数:  
 公针材料: 黄铜  
 表面电镀:  
 镀银:  $\geq 2\mu\text{m}$   
 接触电阻:  $\leq 0.5\text{m}\Omega$   
 接线范围: 见表格  
 工作温度:  $-40\sim+125^\circ\text{C}$



2) Ød=8.2



PART NUMBER	Ød	ØD	WIRE GAUGE	STRIPPING LENGTH
			MM <sup>2</sup>	L (mm)
T2050002010-000	4.3	5.6	10	20
T2050002016-000	5.5	8.5	16	
T2050002025-000	7.0	10.0	25	
T2050002035-000	8.2	12.5	35	

THIS DRAWING IS A CONTROLLED DOCUMENT.		DWN 25JUN2015 David Wang	<b>STE</b> TE Connectivity	
DIMENSIONS: mm		CHK 25JUN2015 Chris Wang		
TOLERANCES UNLESS OTHERWISE SPECIFIED:		APVD 25JUN2015 Xiang Xu	NAME CNF SOCKET CONTACT	
0 PLC ±-		PRODUCT SPEC 108-137058	RESTRICTED TO	
1 PLC ±-		APPLICATION SPEC 108-137058	SIZE A3	CAGE CODE 00779
2 PLC ±-		WEIGHT -	DRAWING NO T20500020XX000	
3 PLC ±-		Customer Drawing	SCALE 1:1	SHEET 1 OF 1
4 PLC ±-			REV A	
ANGLES ±-				
FINISH -				

## X-ON Electronics

Largest Supplier of Electrical and Electronic Components

*Click to view similar products for [Heavy Duty Power Connectors](#) category:*

*Click to view products by [TE Connectivity](#) manufacturer:*

Other Similar products are found below :

[1424439](#) [1424438](#) [09330062652](#) [2-8675P1](#) [605601-1](#) [6340G1](#) [6341G1](#) [6360G1](#) [6373G1](#) [6374g2](#) [6396G1](#) [647757-1](#) [66394-4](#) [6643411-1](#)  
[6646058-2](#) [6646137-1](#) [6646138-1](#) [6646348-1](#) [6646479-1](#) [6646608-1](#) [6646786-1](#) [6646940-1](#) [6651091-1](#) [6651525-1](#) [6651529-1](#) [6651778-1](#)  
[6651788-1](#) [696465-1](#) [696475-1](#) [73000005059](#) [73000005349](#) [73000005642](#) [73080255059](#) [73080965046](#) [765-15-0080A](#) [765-16-0080B](#)  
[789.700-44](#) [789.700-54](#) [80-1010](#) [80-9](#) [827381-1](#) [829992-1](#) [902-77-02113](#) [PL00U-301-10D10](#) [PM103MOOLOO](#) [PM16S1620S32-50](#)  
[PM212MOOLOO](#) [PM309FOOLOO](#) [PM324FOOLCH](#) [PMHPAF11S03](#)