

# ALUMINUM ELECTROLYTIC CAPACITORS



Chip Type, High Reliability.  
Low temperature ESR specification.



For SMD Long Life Anti-Solvent Feature



- Chip type, high temperature range, for +125°C use.
  - Added ESR specification after the test at -40°C (φ6.3 sizes provide only for the first stage.)
  - Applicable to automatic mounting machine fed with carrier tape.
  - Compliant to the RoHS directive (2011/65/EU,(EU)2015/863).
  - AEC-Q200 compliant.
- Please contact us for details.



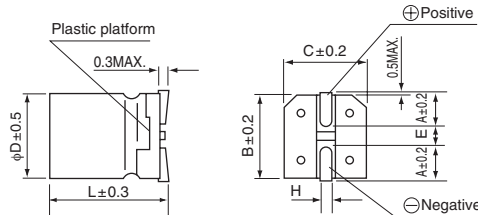
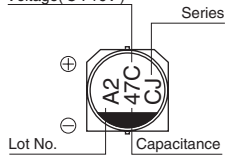
## Specifications

Item	Performance Characteristics												
Category Temperature Range	-40 to +125°C												
Rated Voltage Range	10 to 50V												
Rated Capacitance Range	10 to 470μF												
Capacitance Tolerance	±20% at 120Hz, 20°C												
Leakage Current	After 1 minute's application of rated voltage at 20°C, leakage current is not more than 0.03CV or 4(μA), whichever is greater.												
Tangent of loss angle (tan δ)	Measurement frequency : 120Hz at 20°C												
	<table border="1"> <thead> <tr> <th>Rated voltage (V)</th> <th>10</th> <th>16</th> <th>25</th> <th>35</th> <th>50</th> </tr> </thead> <tbody> <tr> <td>tan δ (MAX.)</td> <td>0.32</td> <td>0.24</td> <td>0.21</td> <td>0.18</td> <td>0.18</td> </tr> </tbody> </table>	Rated voltage (V)	10	16	25	35	50	tan δ (MAX.)	0.32	0.24	0.21	0.18	0.18
Rated voltage (V)	10	16	25	35	50								
tan δ (MAX.)	0.32	0.24	0.21	0.18	0.18								
Stability at Low Temperature	Measurement frequency : 120Hz												
	<table border="1"> <thead> <tr> <th>Rated voltage (V)</th> <th>10</th> <th>16</th> <th>25</th> <th>35</th> <th>50</th> </tr> </thead> <tbody> <tr> <td>Impedance ratio ZT / Z20 (MAX.)</td> <td>Z-40°C / Z+20°C</td> <td>12</td> <td>8</td> <td>6</td> <td>4</td> <td>4</td> </tr> </tbody> </table>	Rated voltage (V)	10	16	25	35	50	Impedance ratio ZT / Z20 (MAX.)	Z-40°C / Z+20°C	12	8	6	4
Rated voltage (V)	10	16	25	35	50								
Impedance ratio ZT / Z20 (MAX.)	Z-40°C / Z+20°C	12	8	6	4	4							
Endurance	The specifications listed at right shall be met when the capacitors are restored to 20°C after the rated voltage is applied for 2000 hours at 125°C.	Capacitance change	Within ±30% of the initial capacitance value										
		tan δ	300% or less than the initial specified value										
		Leakage current	Less than or equal to the initial specified value										
Shelf Life	After storing the capacitors under no load at 125°C for 1000 hours and then performing voltage treatment based on JIS C 5101-4 clause 4.1 at 20°C, they shall meet the specified values for the endurance characteristics listed above.												
Resistance to soldering heat	The capacitors are kept on a hot plate for 30 seconds, which is maintained at 250°C. The capacitors shall meet the characteristic requirements listed at right when they are removed from the plate and restored to 20°C.	Capacitance change	Within ±10% of the initial capacitance value										
		tan δ	Less than or equal to the initial specified value										
		Leakage current	Less than or equal to the initial specified value										
Marking	Black print on the case top.												

## Chip Type

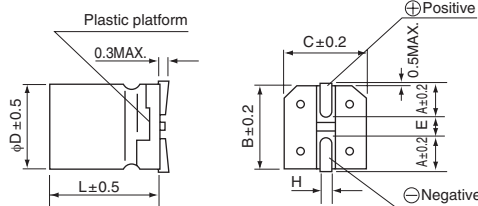
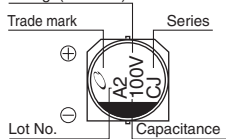
(φ6.3)

Voltage (V) : 16V

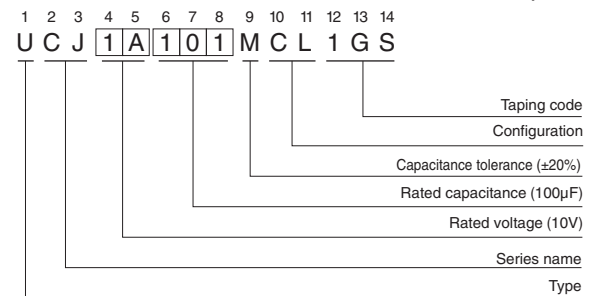


(φ8, φ10)

Voltage (V) : 35V



## Type numbering system (Example : 10V 100μF)



φD x L	6.3 x 8.7	8 x 10	10 x 10
A	2.4	2.9	3.2
B	6.6	8.3	10.3
C	6.6	8.3	10.3
E	2.2	3.1	4.5
L	8.7	10	10
H	0.5 to 0.8	0.8 to 1.1	0.8 to 1.1

Voltage

V	10	16	25	35	50
Code	A	C	E	V	H

## Frequency coefficient of rated ripple current

Frequency	50 Hz	120 Hz	300 Hz	1 kHz	10 kHz or more
Coefficient	0.35	0.50	0.64	0.83	1.00

● Dimension table in next page.

UCJ

## ■ Dimensions

Rated Voltage (V) (code)	Rated Capacitance ( $\mu\text{F}$ )	Case Size $\phi\text{D}\times\text{L}$ (mm)	$\tan \delta$	Leakage Current ( $\mu\text{A}$ ) (at 20°C after 1 minute)	ESR ( $\Omega$ ) MAX. (-40°C/100kHz)		Rated Ripple (mArms) (125°C/100kHz)	Part Number
					Initial	after endurance test		
10 (1A)	100	6.3×8.7	0.32	30	14	—	95	UCJ1A101MCL1GS
	220	8×10	0.32	66	2.0	6.0	250	UCJ1A221MCL1GS
	330	10×10	0.32	99	1.5	4.5	400	UCJ1A331MCL1GS
	470	10×10	0.32	141	1.5	4.5	400	UCJ1A471MCL1GS
16 (1C)	47	6.3×8.7	0.24	22.56	14	—	95	UCJ1C470MCL1GS
	100	8×10	0.24	48	2.0	6.0	250	UCJ1C101MCL1GS
	220	10×10	0.24	105.6	1.5	4.5	400	UCJ1C221MCL1GS
	330	10×10	0.24	158.4	1.5	4.5	400	UCJ1C331MCL1GS
25 (1E)	22	6.3×8.7	0.21	16.5	14	—	95	UCJ1E220MCL1GS
	33	6.3×8.7	0.21	24.75	14	—	95	UCJ1E330MCL1GS
	47	6.3×8.7	0.21	35.25	14	—	95	UCJ1E470MCL1GS
	100	8×10	0.21	75	2.0	6.0	250	UCJ1E101MCL1GS
	220	10×10	0.21	165	1.5	4.5	400	UCJ1E221MCL1GS
	330	10×10	0.21	247.5	1.5	4.5	400	UCJ1E331MCL1GS
35 (1V)	10	6.3×8.7	0.18	10.5	14	—	95	UCJ1V100MCL1GS
	22	6.3×8.7	0.18	23.1	14	—	95	UCJ1V220MCL1GS
	33	6.3×8.7	0.18	34.65	14	—	95	UCJ1V330MCL1GS
	47	6.3×8.7	0.18	49.35	14	—	95	UCJ1V470MCL1GS
	100	10×10	0.18	105	1.5	4.5	400	UCJ1V101MCL1GS
	220	10×10	0.18	231	1.5	4.5	400	UCJ1V221MCL1GS
50 (1H)	10	6.3×8.7	0.18	15	14	—	95	UCJ1H100MCL1GS
	22	6.3×8.7	0.18	33	14	—	95	UCJ1H220MCL1GS
	33	8×10	0.18	49.5	2.0	6.0	200	UCJ1H330MCL1GS
	47	10×10	0.18	70.5	1.5	4.5	330	UCJ1H470MCL1GS
	100	10×10	0.18	150	1.5	4.5	330	UCJ1H101MCL1GS

• For taping specifications, recommended land size/soldering by reflow and minimum order quantity, please refer to the Guidelines for Aluminum Electrolytic Capacitors.

## X-ON Electronics

Largest Supplier of Electrical and Electronic Components

*Click to view similar products for [Aluminium Electrolytic Capacitors - SMD category](#):*

*Click to view products by [Nichicon manufacturer](#):*

Other Similar products are found below :

[EEV-FK1E332W](#) [22927](#) [MAL214099813E3](#) [HUB1800-S](#) [34610](#) [RYK-50V101MG5TT-FL](#) [107AXZ016MQ5](#) [UCX1E102MNQ1MS](#)  
[EMF1EM101E83D00R](#) [EMK1AM221E83D00R](#) [EMK1EM471GB0D00R](#) [EMK1VM101E83D00R](#) [EMVY350ARA221MHA0G](#)  
[UV2G3R3M0810VG](#) [EMK1VM101FB0D00R](#) [RVT2A4R7M0605](#) [MAL214097402E3](#) [MAL215375471E3](#) [MAL224699909E3](#)  
[MAL224699813E3](#) [MAL215099014E3](#) [MAL215099017E3](#) [MAL215099117E3](#) [MAL215099818E3](#) [HV100M100E077ETR](#)  
[RC0J226M04005VR](#) [RC0J476M05005VR](#) [RC1A227M08010VR](#) [RC1V476M6L006VR](#) [MAL214099111E3](#) [EXV107M025A9HAA](#)  
[50SEV1M4X5.5](#) [50SKV1M4X5.5](#) [TYEH1A336E55MTR](#) [UCD1V100MCQ1GS](#) [UCX1H471MNQ1MS](#) [35SEV47M6.3X8](#)  
[35SGV220M10X10.5](#) [35SLV10M5X6.1](#) [VEJ220M1VTR-0606](#) [VES2R2M1HTR-0405](#) [50SEV10M6.3X5.5](#) [50SGV1M4X6.1](#) [107SML016M](#)  
[EDK226M035A9DAA](#) [EEV-HA1A471UP](#) [SC1C476M05005VR](#) [UCX1H471MNS1MS](#) [VZH331M1ETR-0810](#) [VES101M1CTR-0605](#)