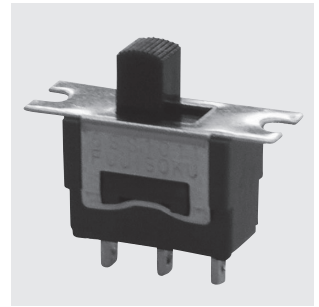


# 8SS

## Sub-miniature Slide Switch

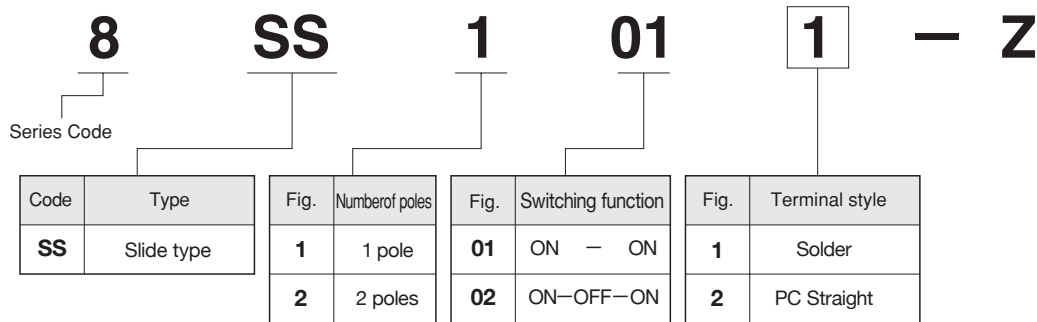


RoHS Compliant

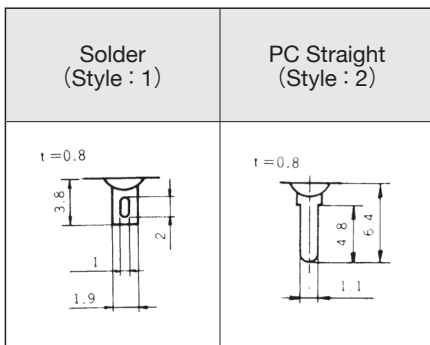
### Specifications

Contact specs.	Silver contacts	
Rating	Max.	125VAC 6A 30VDC 4A
	Min.	5VAC/DC 100mA
Initial contact resistance	10mΩ max. (2~4VDC 1A)	
Initial dielectric strength	1,000VAC 1 minute	
Initial insulation resistance	1,000MΩ min. (500VDC)	
Electrical life	ON — ON	30,000 cycles
	ON — OFF — ON	20,000 cycles
Mechanical life	100,000 cycles	
Operating temperature range	-30~+85°C	
Storage temperature range	-40~+85°C	

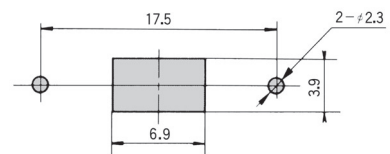
### Part Numbering



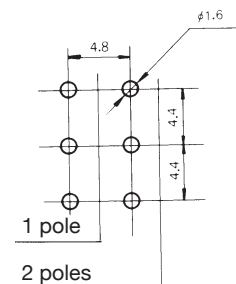
### Terminal Styles



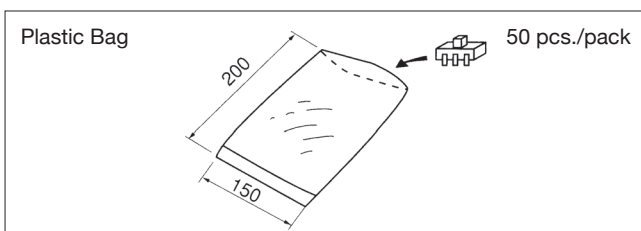
### Panel Cut-Out Dimensions



### PC Hole Layouts

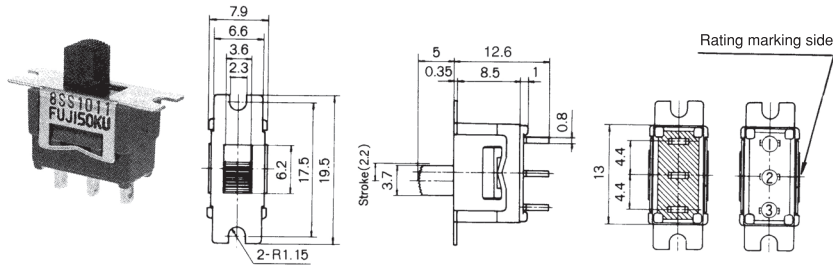


### Packaging Specifications



■ SPDT

Solder terminals



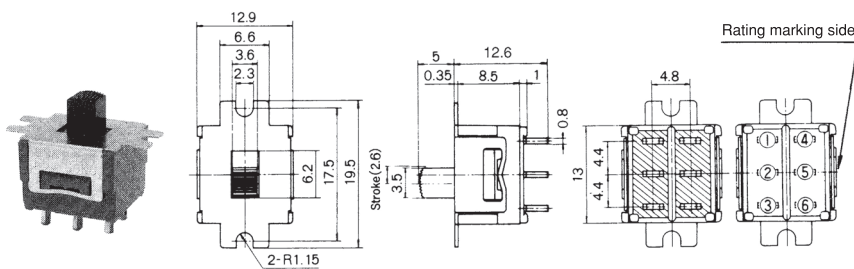
S/D

The terminal numbers are not shown on the switch.

Switching function	Viewed from rating marking side		
Part No.			
8SS1011-Z	ON	—	ON
▲8SS1021-Z	ON	OFF	ON
Connecting terminals	2-1	—	2-3

■ DPDT

Solder terminals



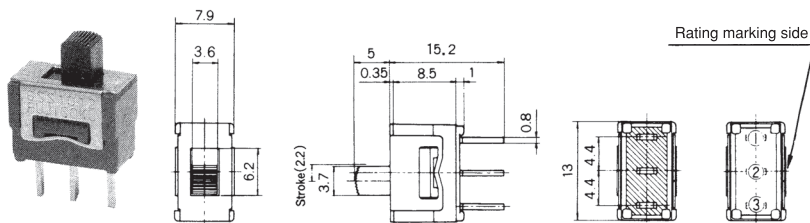
S/D

The terminal numbers are not shown on the switch.

Switching function	Viewed from rating marking side		
Part No.			
8SS2011-Z	ON	—	ON
★8SS2021-Z	ON	OFF	ON
Connecting terminals	2-1 5-4	—	2-3 5-6

■ SPDT

PC Straight



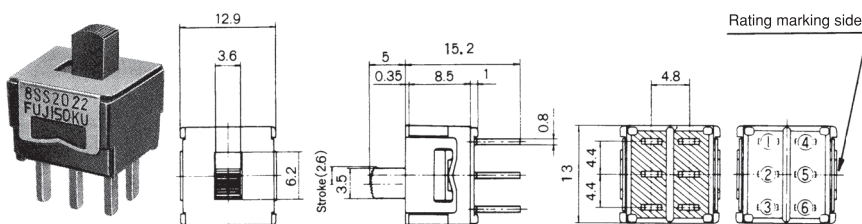
P/C

The terminal numbers are not shown on the switch.

Switching function	Viewed from rating marking side		
Part No.			
8SS1012-Z	ON	—	ON
★8SS1022-Z	ON	OFF	ON
Connecting terminals	2-1	—	2-3

■ DPDT

PC Straight



P/C

The terminal numbers are not shown on the switch.

Switching function	Viewed from rating marking side		
Part No.			
8SS2012-Z	ON	—	ON
★8SS2022-Z	ON	OFF	ON
Connecting terminals	2-1 5-4	—	2-3 5-6

★ : Made to order products.  
▲ : Inquiry products.

Not all products are UL-recognized or CSA-certified. Please contact your local Nidec Copal Electronics sales representative.

## X-ON Electronics

Largest Supplier of Electrical and Electronic Components

*Click to view similar products for [Slide Switches](#) category:*

*Click to view products by [Nidec Copal](#) manufacturer:*

Other Similar products are found below :

[6-1437581-1](#) [M43R](#) [MHS123K15D](#) [MHS133K](#) [MHSS1104A](#) [MMD](#) [GH49S010001](#) [MSS12A](#) [EPS1PC1](#) [1825074-1](#) [1825160-3](#) [1825167-2](#)  
[1825289-7](#) [K232CB](#) [25139NLDB](#) [25449NAH](#) [SLB1240R45](#) [1825078-1](#) [1825080-4](#) [1825269-1](#) [1825270-2](#) [STS141RA04](#) [T2215BEN506](#)  
[GH46P000001](#) [GH46W000001](#) [GH49P010001](#) [25339NA](#) [M42A](#) [TG36P000000](#) [TG36P000050](#) [AYZ0202AG](#) [47227LFE](#) [49331L](#) [50208L](#)  
[L203091MS02Q](#) [4-1437581-7](#) [X2225CR-437W](#) [49329L](#) [1101M1S3ZB8E2](#) [1-1437581-1](#) [MSS2225G04](#) [TG39W000000](#) [1825075-1](#)  
[MSS42G](#) [TG36WS80065](#) [T105S1CWZBE](#) [SLB124145](#) [SLB1280R5](#) [SLB1340R45](#) [25136NLDB](#)