

BRUSHLESS DC FANS

F310R

FEATURES

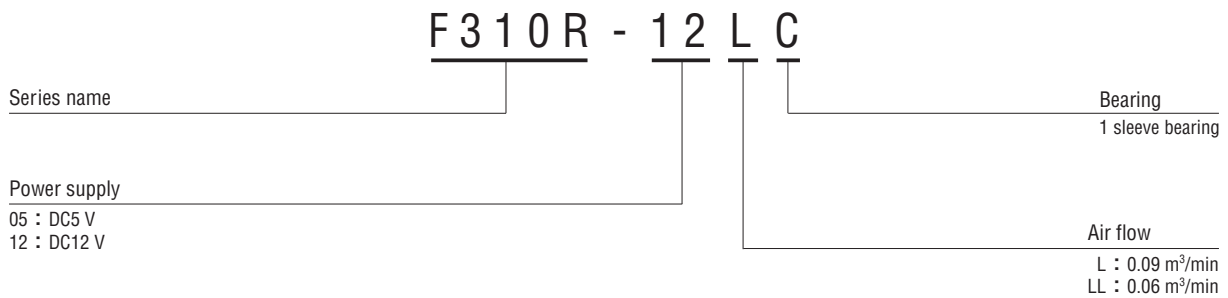
- Low noise, 13 dB (A)
- Light weight (approx. 8 g)

STRUCTURE

- Frame and impeller
ABS/PBT alloy
- Bearing
1 sleeve bearing



PART NUMBER DESIGNATION



LIST OF PART NUMBERS

Power supply	1 sleeve bearing	
	Air flow 0.09 m ³ /min	Air flow 0.06 m ³ /min
DC5 V	F310R-05LC	F310R-05LLC
DC12 V	F310R-12LC	F310R-12LLC

※ Verify the above part numbers when placing orders.

F310R

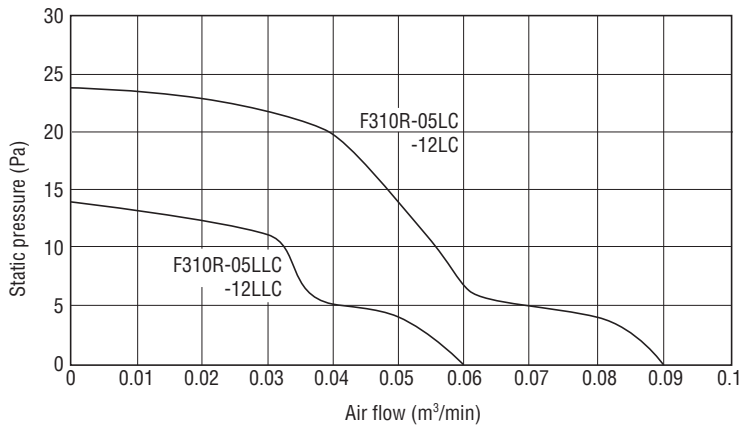
BRUSHLESS DC FANS

STANDARD SPECIFICATIONS

Item	F310R-05LLC	F310R-05LC	F310R-12LLC	F310R-12LC
Rated voltage	DC5 V		DC12 V	
Voltage range	4.5 ~ 5.7 V		10.2 ~ 13.8 V	
Rated current	0.06 A	0.09 A	0.04 A	0.05 A
Rotating speed	5500 min ⁻¹	7000 min ⁻¹	5500 min ⁻¹	7000 min ⁻¹
Air flow	0.06 m ³ /min	0.09 m ³ /min	0.06 m ³ /min	0.09 m ³ /min
Static pressure	14 Pa	23 Pa	14 Pa	23 Pa
Noise	13 dB (A)	17 dB (A)	13 dB (A)	17 dB (A)
Use environment	-10 ~ +60 °C (35 ~ 85 %RH)			
Storage environment	-20 ~ +70 °C (35 ~ 85 %RH)			
Net weight	Approx. 8 g			

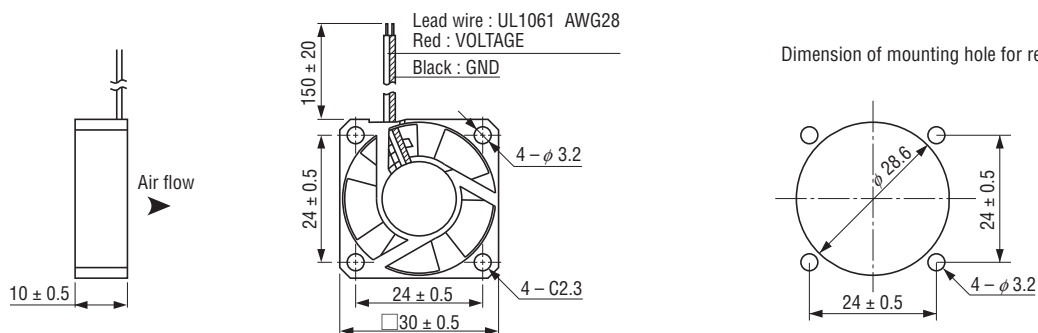
※ The specifications above are typical values measured on the conditions of no-loading running with rated voltage in the circumstances of 25 °C ± 2 °C, 35~ 85 %RH. Please contact us if you would liketo check the specifications in different circumstances.

AIR FLOW PERFORMANCE CURVES

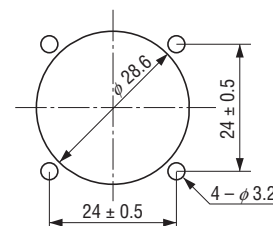


OUTLINE DIMENSIONS

(Unit: mm)



Dimension of mounting hole for recommendation



X-ON Electronics

Largest Supplier of Electrical and Electronic Components

Click to view similar products for [DC Fans](#) category:

Click to view products by [Nidec Copal](#) manufacturer:

Other Similar products are found below :

[614R](#) [AUB0612L](#) [AFB0948HH-S687](#) [G2E085-AA05-10](#) [4318/12T](#) [AUB0912H-F00](#) [3412N/2ME](#) [W2G110-AM39-01](#) [8412GLV](#) [8412NGL-12](#) [6448-384](#) [4114N/17-251](#) [4318/2R](#) [4412F/2D](#) [424JMU](#) [4414/2HH](#) [4112 N/12GL-175](#) [9GA0912F402](#) [9GA0812B20011](#)
[AFB0824SHBAV1](#) [DV5214/2NP-230](#) [9GA0912H4021](#) [THC1548MGDJJ](#) [9GA0812B2001](#) [GFB1224SHG](#) [8500NU](#) [9WG1212E101-E](#)
[3241.124](#) [DC0401012V2B-3T0](#) [ASFP14391](#) [ASFP64371](#) [ASFP64391](#) [ASFP84391](#) [ASFP92391](#) [9A0612G402](#) [AD5012HB-C71](#)
[AD5012MB-C71](#) [ASFP84372](#) [ASFP64372](#) [31100-000440-RS](#) [ASFP14372](#) [ASFP16371](#) [ASFP16372](#) [ASFP40770](#) [ASFP42770](#) [ASFP44770](#)
[ASFP64392](#) [ASFP82392](#) [ASFP84392](#) [ASFP92371](#)