

RoHS compliant



Weight : approx. 155 g

■ PART NUMBER DESIGNATION

HG37 - 300 - A B - 00

Series name

Gear ratio

010 : 1/10 150 : 1/150
 030 : 1/30 200 : 1/200
 060 : 1/60 300 : 1/300
 120 : 1/120

Rated voltage

A : DC12 V
 B : DC24 V

■ LIST OF PART NUMBER

Gear ratio	Rated voltage	
	DC12 V	DC24 V
1/10	HG37-010-AA-00	HG37-010-AB-00
1/30	HG37-030-AA-00	HG37-030-AB-00
1/60	HG37-060-AA-00	HG37-060-AB-00
1/120	HG37-120-AA-00	HG37-120-AB-00
1/150	HG37-150-AA-00	HG37-150-AB-00
1/200	HG37-200-AA-00	HG37-200-AB-00
1/300	HG37-300-AA-00	HG37-300-AB-00

※ Verify the above part numbers when placing orders.

HG37

DC GEARED MOTORS

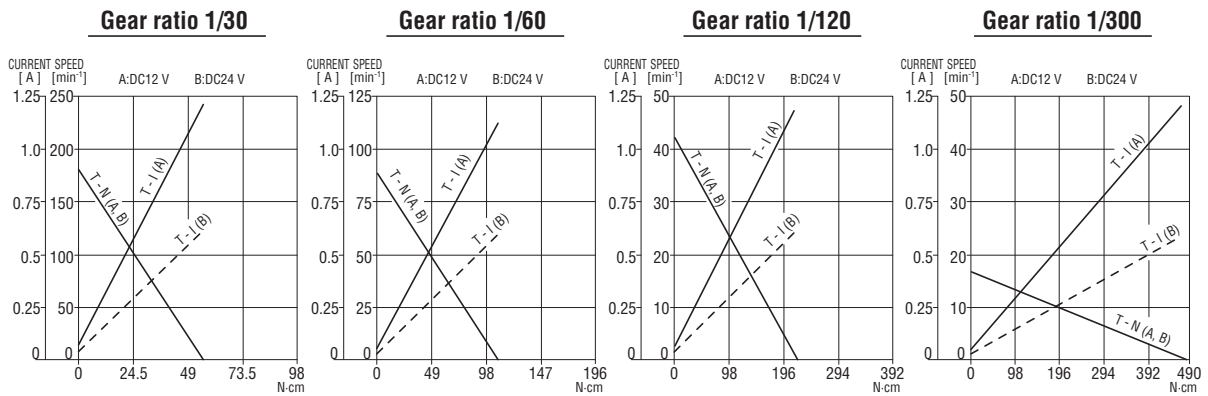
STANDARD SPECIFICATIONS

<With gearbox>

Gear ratio		1/10	1/30	1/60	1/120	1/150	1/200	1/300
Tolerance torque	mN·m	44	147	294	588			
Rated torque	mN·m	29	98	196	392	490	588	
Rated speed	min ⁻¹	460	140	70	33	27	22	14.5
Rated current	mA	DC12 V : 280			DC24 V : 140			DC12 V : 180 DC24 V : 90
No load speed	min ⁻¹	570	173	87	41	33	26	16.3
Starting current	mA	DC12 V : 1200			DC24 V : 600			

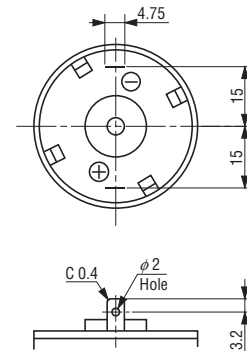
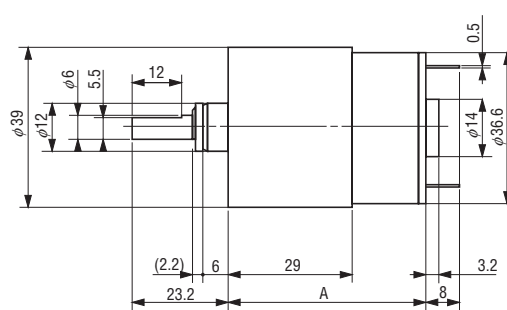
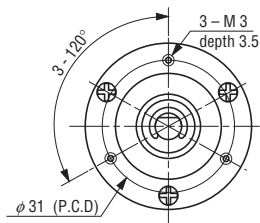
PERFORMANCE CURVES

(Figures in the table are typical values under rated operating condition.)



OUTLINE DIMENSIONS

(Unit: mm)



※ Mating connectors for the terminals

(Manufactured by Nichifu K.K.)

〔 Housing : NEP2-48-1P
Terminal : CSS-64815-F3 〕

Marks A

Gear ratio	1/10	1/30	1/60	1/120	1/150	1/200	1/300
A	38.5	46.5		52.0			

X-ON Electronics

Largest Supplier of Electrical and Electronic Components

Click to view similar products for [AC, DC & Servo Motors](#) category:

Click to view products by [Nidec Copal](#) manufacturer:

Other Similar products are found below :

[114992423](#) [290-006](#) [290-008](#) [290-010](#) [55330.01512](#) [55462.19650](#) [6001HB](#) [63600-5861](#) [79207644](#) [79210372](#) [79265119](#) [79513105](#)
[80140059](#) [80149518](#) [80180050](#) [80280008](#) [80337506](#) [80337514](#) [80350001](#) [80370001](#) [80510003](#) [80510503](#) [80527001](#) [80527006](#) [80547002](#)
[80547015](#) [80547018](#) [80547020](#) [80547021](#) [80547029](#) [805470A40040MY](#) [805470B40020MY](#) [805470B40040MY](#) [80627003](#) [80667037](#)
[80803007](#) [80803008](#) [80803009](#) [80803010](#) [80804009](#) [80804010](#) [80804011](#) [80804014](#) [80805001](#) [80805002](#) [80805025](#) [80807001](#) [80807015](#)
[80807018](#) [80807020](#)