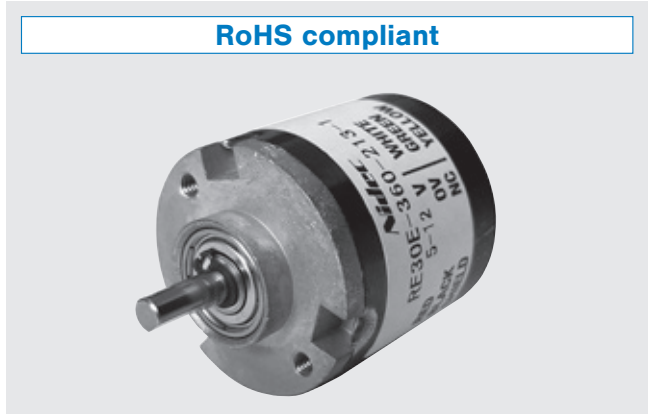


# OPTICAL ENCODERS

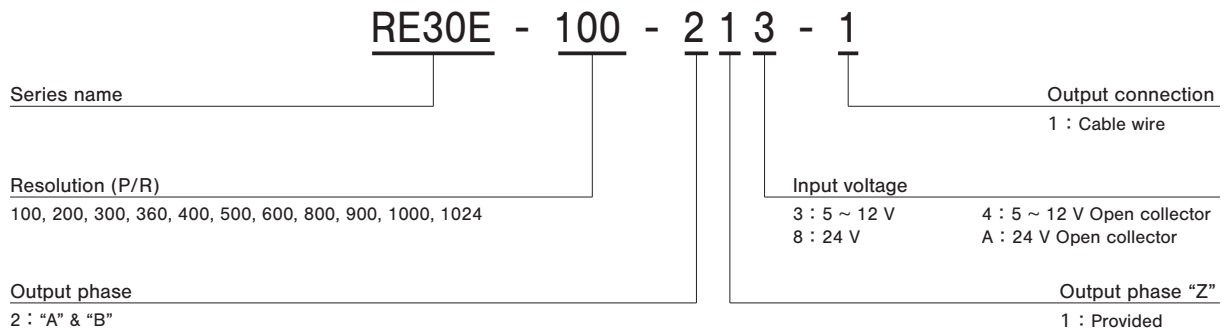
# RE30E

## FEATURES

- With temp. compensation circuit
- With zero index signal
- Power supply voltage is for 5 ~ 12 V, 24V
- Economy type
- RoHS compliant



## PART NUMBER DESIGNATION



## LIST OF PART NUMBERS

Resolution	Item	Input voltage			
		5 ~ 12 V	5 ~ 12 V Open collector	24 V	24 V Open collector
100 (P/R)	RE30E-100-213-1	⊕ RE30E-100-214-1	⊕ RE30E-100-218-1	⊕ RE30E-100-21A-1	
200 (P/R)	RE30E-200-213-1	⊕ RE30E-200-214-1	⊕ RE30E-200-218-1	⊕ RE30E-200-21A-1	
300 (P/R)	RE30E-300-213-1	⊕ RE30E-300-214-1	⊕ RE30E-300-218-1	⊕ RE30E-300-21A-1	
360 (P/R)	RE30E-360-213-1	⊕ RE30E-360-214-1	⊕ RE30E-360-218-1	⊕ RE30E-360-21A-1	
400 (P/R)	RE30E-400-213-1	⊕ RE30E-400-214-1	⊕ RE30E-400-218-1	⊕ RE30E-400-21A-1	
500 (P/R)	RE30E-500-213-1	⊕ RE30E-500-214-1	⊕ RE30E-500-218-1	⊕ RE30E-500-21A-1	
600 (P/R)	RE30E-600-213-1	⊕ RE30E-600-214-1	⊕ RE30E-600-218-1	⊕ RE30E-600-21A-1	
800 (P/R)	RE30E-800-213-1	⊕ RE30E-800-214-1	⊕ RE30E-800-218-1	⊕ RE30E-800-21A-1	
900 (P/R)	RE30E-900-213-1	⊕ RE30E-900-214-1	⊕ RE30E-900-218-1	⊕ RE30E-900-21A-1	
1000 (P/R)	RE30E-1000-213-1	⊕ RE30E-1000-214-1	⊕ RE30E-1000-218-1	⊕ RE30E-1000-21A-1	
1024 (P/R)	RE30E-1024-213-1	⊕ RE30E-1024-214-1	⊕ RE30E-1024-218-1	⊕ RE30E-1024-21A-1	

※ Verify the above part numbers when placing orders.

The products indicated by ⊕ mark are manufactured upon receipt of order basis.

# RE30E

## OPTICAL ENCODERS

### STANDARD SPECIFICATIONS

#### Electrical characteristics

Input voltage	DC5 ~ 12 V ± 10 %	DC24 V ± 10 %
Input current	50 mA maximum	
Output wave form	矩形波 Square wave	
Output phases	A, B, Z	
Resolution	100, 200, 300, 360, 400, 500 600, 800, 900, 1000, 1024	
Phase difference of outputs A & B	90° ± 45°	
Maximum frequencys response	10 kHz (100 P/R), 20 kHz (200P/R) 25 kHz (300 ~ 500 P/R), 60 kHz (600 P/R) 80 kHz (800 P/R), 90 kHz (900P/R) 100 kHz (1000 ~ 1024 P/R)	
Output signal	"1 (High)"	(Vcc - 1) V min. (Vcc - 2) V min.
	"0 (Low)"	+ 0.5 V max. + 1.0 V max.
Output impedance	2.2 kΩ	
Light source	LED	

#### Mechanical characteristics

Starting torque	0.29 mN·m {3 gf·cm} maximum	
Inertia	2 g·cm <sup>2</sup> maximum	
Shaft loading (When mounting)	Radial	19.6 N {2 kgf} maximum
	Axial	9.81 N {1 kgf} maximum
Net weight	Approx. 70 g	

#### Environmental characteristics

Operating temp. range	0 ~ 70 °C
Storage temp. range	- 20 ~ 80 °C
Protection grade	IP40

### RELIABILITY TEST

The output wave form shall satisfy the STANDARD SPECIFICATIONS after the following tests.

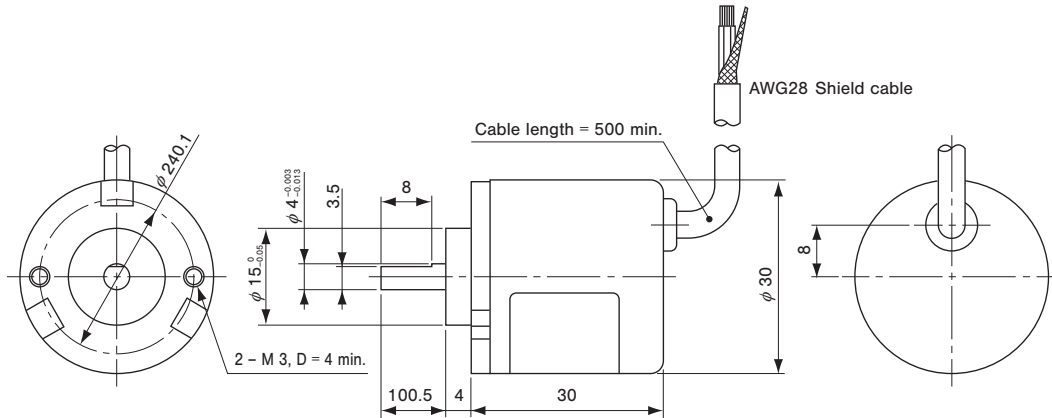
Test item		Test conditions	
Vibration	Power OFF	Amplitude : 1.52 mm or 98.1 m/s <sup>2</sup> (10 G) whichever is smaller. 10 ~ 500 Hz excursion 0.25 h/cycle, 8 cycles each for X, Y, Z, directions.	
Shock	Power OFF	3 times each in 6 directions (X, Y, Z) at 490 m/s <sup>2</sup> (50 G), 11 ms.	
High temperature exposure	Power OFF	80 °C 96 h	(To be measured after leaving samples for 1 h at normal temperature and humidity after the test.)
	Power ON	70 °C 96 h	
Low temperature exposure	Power OFF	- 20 °C 96 h	
	Power ON	0 °C 96 h	
Humidity	Power OFF	(To be measured after wiping out moisture and leaving samples for 1 h at normal temperature and humidity after the test.)	
Thermal shock	Power OFF	To be done 10 cycles with the following condition (To be measured after leaving samples for 1 h at normal temperature and humidity after the test.) 80 °C 1 h, - 20 °C 1 h	

# RE30E

## OPTICAL ENCODERS

### OUTLINE DIMENSIONS

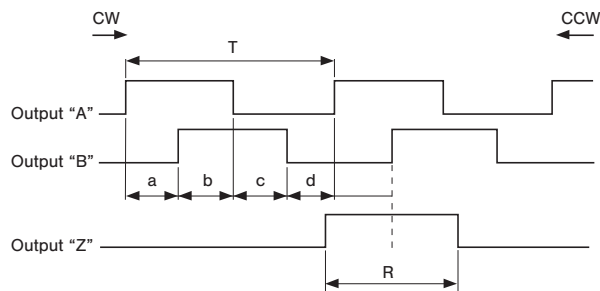
Unless otherwise specified, tolerance:  $\pm 0.4$  (Unit: mm)



### ELECTRICAL WIRING

Red	Power $\oplus$
Black	Power 0 (V)
White	Output "A"
Green	Output "B"
Yellow	Output "Z"
Cable shield	NC

### OUTPUT

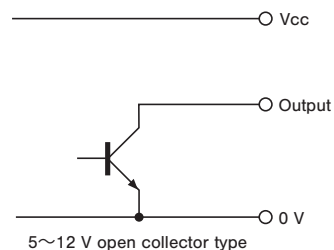
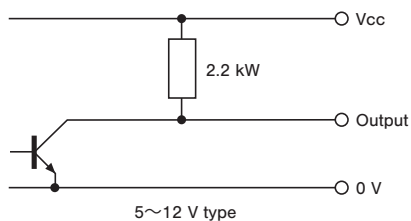


a, b, c, d =  $1/4T1/8T$   
R =  $T3/4T$

The "Z" phase, however, includes no more than two "B" phase startups (CW rotation)

### OUTPUT CIRCUIT

#### RE30E



Sink current of output circuit 80 mA maximum (at 25 C)

## X-ON Electronics

Largest Supplier of Electrical and Electronic Components

*Click to view similar products for [Encoders](#) category:*

*Click to view products by [Nidec Copal](#) manufacturer:*

Other Similar products are found below :

[6-1393048-0](#) [6-1393048-5](#) [62AG22-H5-P](#) [62B22-LP-030C](#) [63K25](#) [63K32](#) [63KS100](#) [63KS64](#) [63R100](#) [63R50-020](#) [63RS256-060](#) [700-09-36](#)  
[RE12D300-201-1](#) [1393047-3](#) [2-1393047-2](#) [T101-5C2-111-M1](#) [T101-5C3-111-M1](#) [T101-5C4-111-M1](#) [385001M0439](#) [385001M0216](#)  
[V23401H1409B101](#) [V23401T8002B802](#) [V23401U6019B609](#) [E69-1](#) [E69DF10](#) [E69-FCA](#) [62B11-LP-100S](#) [62B11-LPP-040C](#) [62N11-P](#)  
[62S22-H9-120S](#) [62S30-L0-200C](#) [62V15-02-080S](#) [63K64](#) [63KS100-040](#) [63R64-050](#) [63RS64](#) [700-16-16](#) [V23401D3002B301](#)  
[V23401D1001B102](#) [3-1393048-1](#) [63KS128](#) [63KS256](#) [1-1879391-5](#) [GH65C11-N-SO](#) [62S15-M0-P](#) [1393047-1](#) [E69-FCA02](#) [E69-FCA04](#)  
[E69-DF20](#) [E69-DF2](#)