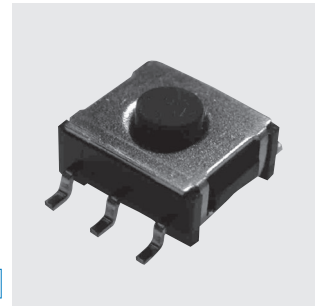


SMT1

Surface Mount Tactile Switches

Washable



RoHS Compliant

■ Features

1. Compatible With Lead-Free, Reflow Soldering

Heat-resistance resin for lead-free soldering.

2. Washable

3. 180° Symmetric Terminal Pin Layout.

4. Anti-Static Electricity

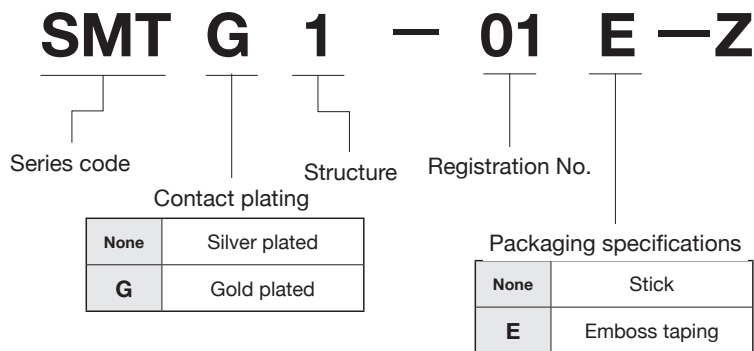
Ground terminal is provided to prevent damage to element caused by static electricity.

5. Metal contact for sharp tactile feel.

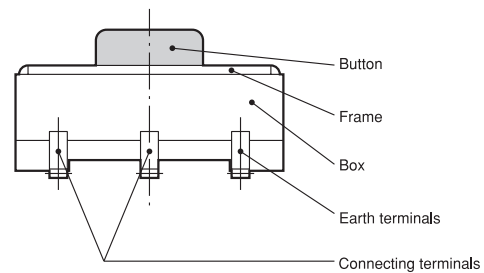
■ Specifications

Contact plating		Silver plated	Gold plated
Rating	Max.	1VA Max. (50mA max.48VDC max.)	
	Min.	0.5mA 20mVDC	10μA 20mVDC
Initial contact resistance		100mΩ Max. {1.5mA 200μVAC at 1.96N [200gf] force}	
Dielectric strength		250VAC 1 minute	
Insulation resistance		100MΩ min.	(100VDC)
Electrical life		1,000,000 operations	
Stroke		0.5±0.3 mm	
Operating force		1.96±0.98N	
Operating temperature range		-25~+70°C	
Storage temperature range		-40~+70°C	

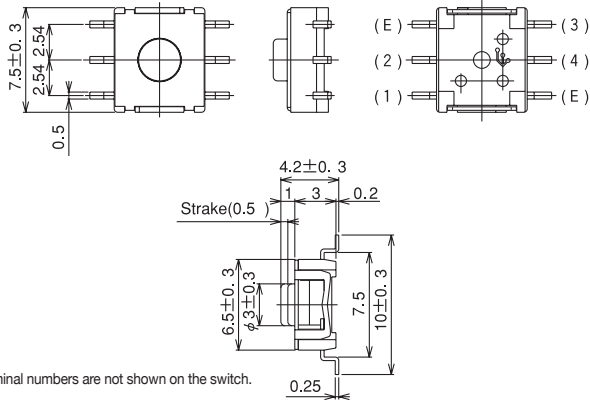
■ Part Numbering



■ Structure



SPST



Terminal numbers are not shown on the switch.

Part No.	Switching function		Circuit diagrams
		Push 	
SMT1-01-Z SMTG1-01-Z	OFF	(ON)	
Connecting terminals	—	(2) (1) (3) (4)	

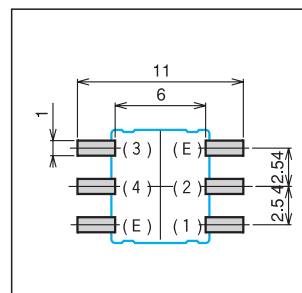
(ON) : Momentary

Table of Part Numbers

Contact plating	Part No.
Silver plated	SMT1-01-Z SMT1-01E-Z
Gold plated	SMTG1-01-Z SMTG1-01E-Z

Pad Layouts

(Top view)



Terminal (E) to be connected to Ground. Terminal (E) is connected to the metal frame.

Soldering Specifications

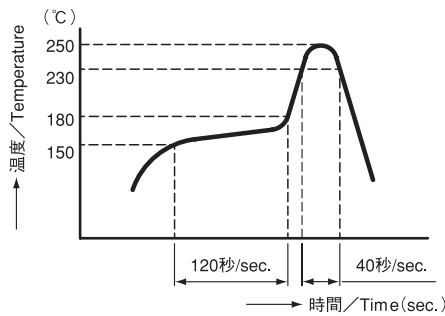
(1) Manual Soldering

Device : Soldering iron

① 380°C ±10°C; 3±0.5 seconds

(2) Reflow Soldering

Device : Inline or batch system



• Apply reflow soldering only once

Flux Cleaning Refer to P. 225.

Packaging Specifications

Stick specification	Emboss taping specification

Minimum packaging quantity for reel packaging is 1,000pcs per reel.

X-ON Electronics

Largest Supplier of Electrical and Electronic Components

Click to view similar products for [Tactile Switches](#) category:

Click to view products by [Nidec Copal](#) manufacturer:

Other Similar products are found below :

[6407-250V-25273P](#) [ADTSA62NV](#) [B3F-3123](#) [1977177-8](#) [1977266-1](#) [ADTSA63NV](#) [ADTSM21NSVTR](#) [ADTSM25RVTR](#) [ADTSM32NVTR](#)
[ADTSMW64RV](#) [1977120-6](#) [FSMRA4JHA04](#) [GS4.70F300QP](#) [KSC241J SP DELTA LFS](#) [3FTL600RAS](#) [3FTL640RAS](#) [Y96K132V0FPLFS](#)
[09158](#) [6407-250V-25343P](#) [ADTSM31NVTR](#) [2-1977120-7](#) [TSJW-5.2-260-TR](#) [TME1-01-Z](#) [Y651050400P](#) [KMT011MNGJLHS](#)
[ADTSG648NV](#) [ADTSM62KSVTR](#) [MJTP1138DTR](#) [ADTSM648NV](#) [95C06E3RAT](#) [3ATH9Q](#) [FSMRA8JHA04](#) [HARS0073](#)
[Y33R411N9FPLFT](#) [Y33R51139FPLFT](#) [Y31C01402FPLFS](#) [PTS645SK50SMTR92](#) [ADTSM32NVB](#) [KMS233GPWTFLFG](#) [Y78B64124FP](#)
[Y33A812C5FP LFT](#) [Y56B2D120FP LFS](#) [PTS645 DVM83-BN125-2 LFS](#) [B3W 1000G](#) [B3F 1002C](#) [B3F 0047H](#) [B3W 1002C](#) [B3F 5001G](#)
[B3W 1100C](#) [1-1571563-4](#)