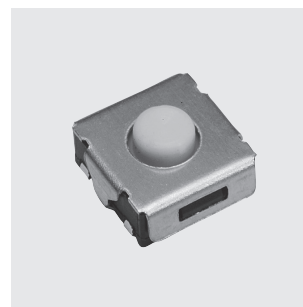


SMT3/SMTE3

Surface Mount Tactile Switches

Washable

RoHS Compliant



■ Features

- Compatible With Lead-Free, Reflow Soldering**
Heat-resistance resin for lead-free soldering.
- Washable (SMTE3 Series)**
- J-Lead Terminal Pins For High-Density Mounting**
- Anti-Static Electricity (SMTE3 Series)**
Ground terminal is provided to prevent damage to element caused by static electricity.

■ Specifications

Rating	Max.	0.6VA max. (24VDC max. 30mA max.)	
	Min.	Silver plated contacts	1mA 5VDC
		Gold plated contacts	10μA 5VDC
Initial contact resistance	100mΩ max. (1.5mA 200μVAC)		
Dielectric strength	250VAC 1 minute		
Insulation resistance	100MΩ min. (100VDC)		
Electrostatic capacity	5pF max.		
Electrical life	100,000 operations		
Stroke	SMT3	0.25mm	
	SMTE3	0.5mm	
Operating force	SMT3	1.18±0.39 N	
	SMTE3	1.96±0.98 N	
Operating temperature range	-25~+70°C		
Storage temperature range	-40~+85°C		

■ Part Numbering

SMT E G 3 - 01 E - Z

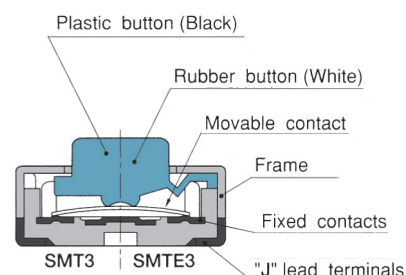
Series code Structure Contact plating Series No. Registration No. Packaging specs.

None	Standard type (Plastic button)
E	Immersion washable (Rubber button)

None	Silver plated
G	Gold plated

None	Stick
E	Emboss taping

■ Structure



■ Table of Part Numbers

Structure	Packaging specifications	
	Stick	Emboss taping
Standard type	SMT3-01-Z	SMT3-01E-Z ★ SMTG3-01E-Z
Immersion washable	SMTE3-01-Z ★ SMTEG3-01-Z	SMTE3-01E-Z ★ SMTEG3-01E-Z

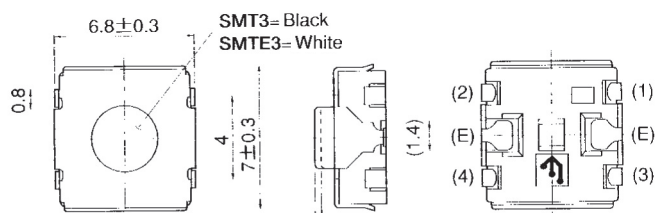
■ Pad Layouts

(Top view)

Ground terminals	Without	With
Part No.	SMT3 · SMTE3 SMTG3 · SMTEG3	SMTE3 SMTEG3
Pattern dimensions		

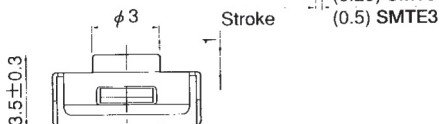
■ SPST

SMT3



SMTE3

Washable



Terminal numbers are not shown on the switch.

Part No.	Switching function	
SMT3-01-Z SMT3-01E-Z SMTEG3-01E-Z SMTE3-01-Z SMTE3-01E-Z SMTEG3-01-Z SMTEG3-01E-Z	OFF	(ON)
Connecting terminals	—	1 — 3 2 — 4
Circuit diagrams		

(ON) : Momentary

(E) : GGround terminal (SMTE3 and SMTEG3 series)

■ Soldering Specifications

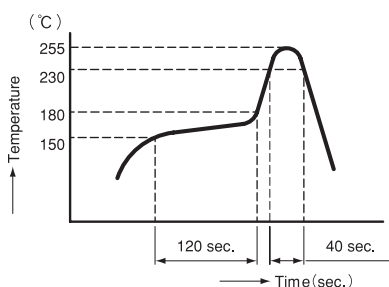
(1) Manual Soldering

Device : Soldering iron

① 350°C ± 10°C; 3 ± 0.5 seconds

(2) Reflow Soldering

Device : Inline or batch system



• Apply reflow soldering up to 2 times max.

■ Flux Cleaning

Since the SMT3 series is not process sealed, be sure to use low-residue flux.

(1) Solvent: Fluorine or Alcohol type

Cleaning with other solvents or water is not possible.

(2) Cleaning after soldering should be done after the terminal temperature falls to 90°C or below, or after leaving the switch for five minutes or longer at room temperature.

Cleaning temperature: 43°C, max.

(3) Do not use ultrasonic cleaning.

■ Packaging Specifications

Stick	Emboss taping
50 pcs/stick	1,000 pcs/reel
φ=375	

● When ordering, tape packaged version shall be supplied by request. Minimum packaging quantity for reel packaging is 1,000pcs per reel.

(ON) : Momentary

X-ON Electronics

Largest Supplier of Electrical and Electronic Components

Click to view similar products for [Tactile Switches](#) category:

Click to view products by [Nidec Copal](#) manufacturer:

Other Similar products are found below :

[5GTH92001](#) [1-1977120-4](#) [ADTSA62NV](#) [ADTSA62RV](#) [ADTSA63KV](#) [ADTSA644NV](#) [ADTSMW66NV](#) [ADTSMW67RV](#) [B3F-3123](#) [B3F-6055A](#) [B3F-B32-01-KIT](#) [1977177-8](#) [1977266-1](#) [ADTS644KV](#) [ADTSA61RV](#) [ADTSA62KV](#) [ADTSA63NV](#) [ADTSA63RV](#) [ADTSM21NSVTR](#) [ADTSM32NVTR](#) [ADTSM63SVTR](#) [ADTSM644KVTR](#) [ADTSMW64RV](#) [ADTSMW69NV](#) [FSMRA4JHA04](#) [GS4.70F300QP](#) [3ESH9R](#) [506E00201](#) [MJTP1164TR](#) [3FTL600RAS](#) [3FTL640RAS](#) [Y96K132V0FPLFS](#) [101-TS5022T1601-EV](#) [5GSH92001](#) [KSJ0A231](#) [80SH LFG](#) [ADTSM31NVTR](#) [EVQ-P1D05K](#) [MJTP1162TR](#) [ADTSM63KV](#) [2-1977120-7](#) [TSJW-5.2-260-TR](#) [KMT011MNGJLHS](#) [B3WN6002S](#) [ADTSA648RV](#) [70-201.0](#) [ADTSG648NV](#) [ADTSM62KSVTR](#) [ATA600VTR](#) [ADTSG66RV](#) [ADTS61NV](#)