

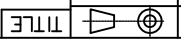
| REV. | DESCRIPTION    | DRAWN         | CHECKED | APPROVED      |
|------|----------------|---------------|---------|---------------|
| A    | NEW RELEASE    | LJH 04/27/05' |         | LJH 04/22/06' |
| B    | ADD SCREW TYPE | DMJ 06/27/07' |         | LJC 06/27/07' |
| C    | 露理圖面           | YCH 05/21/08' |         | LJC 05/21/08' |
| F    | ADD Pos TYPE   | JLZ 03/29/16' |         |               |

NOTES:

- 1. ELECTRICAL CHARACTERISTICS:
- 1.1 CONTACT RESISTANCE: 20mΩ Max. INITIAL.
- 1.2 DIELECTRIC WITHSTANDING VOLTAGE: 500V AC(rms) FOR 1 MINUTE.
- 1.3 INSULATION RESISTANCE: 1000MΩ Min.
- 2. ENVIRONMENT CHARACTERISTICS:
- TEMPERATURE RANGE: -40°C~+105°C.
- 3. PART NUMBER: DS1034
- 4. PRODUCT NUMBER CODE: DS1034- X X X X X X X X

- SCREW DIM. A
- S: Standard(W/O nut)
- 1: 5.00 2: 3.00 3: 5.20
- 4: 4.80 5: 5.80 6: 4.00
- 7: 4.80mm(inside thread M2.6\*0.45p, outside thread unc#4-40)
- 8: 4.80mm(inside thread M3.0\*0.5p, outside thread unc#4-40)
- SCREW TYPE
- S: Standard(W/O nut)
- 2: CS TYPE
- 3: BR TYPE 4: BRJ TYPE DIM. B:6.00 C: 3~4mm
- 5: BRJ TYPE DIM. B:6.00 C: 5~6mm
- 6: BRJ TYPE DIM. B:6.00 C: 3~4mm
- 7: BRJ TYPE DIM. B:6.00 C: 3~4mm
- 8: BRJ TYPE DIM. B:6.00 C: 3~4mm (inside thread M2.6\*0.45p,outside thread unc#4-40)
- 9: BRJ TYPE DIM. B:6.00 C: 3~4mm (inside thread M3.0\*0.50p,outside thread unc#4-40)
- CONTACT PLATING
- Si: FULL GOLD FLASH
- O: SELECTIVE GOLD FLASH
- SHELL PLATING
- T: FRONT & BACK SHELL TIN
- N: FRONT SHELL,NICKEL,BACK SHELL TIN
- HOUSING COLOR
- B: BLACK W: WHITE
- U: BLUE
- CONNECTOR TYPE
- M: MALE F: FEMALE
- No. OF CONTACTS

- 09: 9pos. 15: 15pos. 25: 25pos.
- 37: 37pos. 50: 50pos.

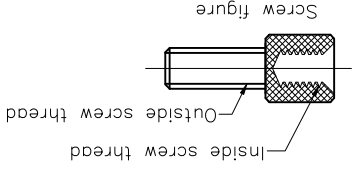


|            |       |            |               |                         |  |
|------------|-------|------------|---------------|-------------------------|--|
| PROJECTION | UNITS | SHEET SIZE | SERIES        | D-SUB DIP STRAIGHT TYPE |  |
|            | mm    | A4         | DS1034 SERIES |                         |  |

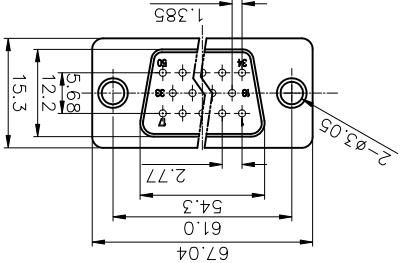
晨翔电子有限公司

CONNLY CONNLY ELECTRONIC CO., LTD

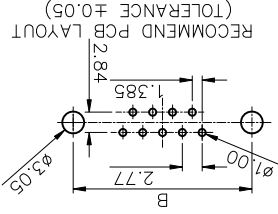
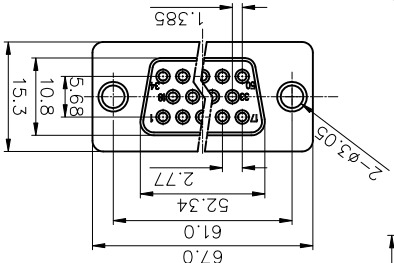
|              |           |                   |
|--------------|-----------|-------------------|
| DRAWING NO.  |           | C-DS1034-XXXXXX-F |
| SCALE        |           | 1:1 SHEET 1 OF 1  |
| DRAWING TYPE |           | CUSTOMER          |
| ±0.60        | ±0.25     | ±5. XX ±0.38      |
| X. ±0.38     | .XX ±0.25 | .X ±0.3           |
| X. ±0.60     | .XX ±0.25 | .XX ±0.2          |



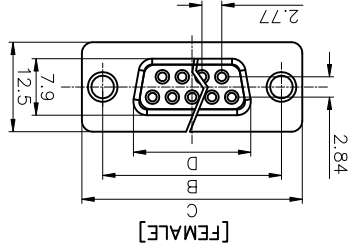
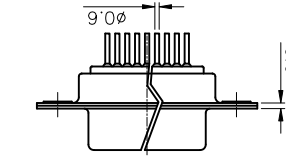
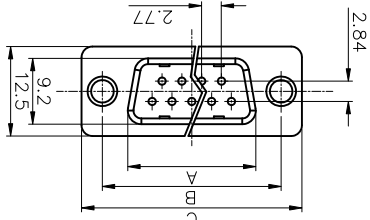
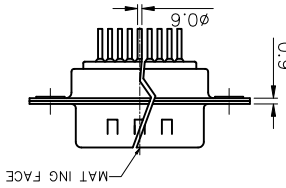
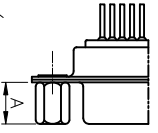
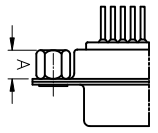
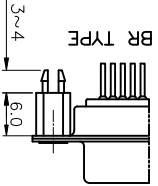
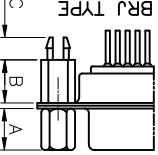
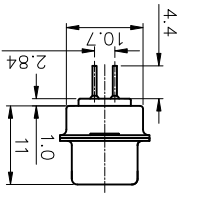
50pin Male Figure



50pin Female Figure



RECOMMEND PCB LAYOUT (TOLERANCE ±0.05)



|           |       |       |       |       |
|-----------|-------|-------|-------|-------|
| Dimension | A±0.2 | B±0.2 | C±0.3 | D     |
| Position  | 9     | 17.90 | 24.99 | 30.80 |
|           | 15    | 26.50 | 33.32 | 39.14 |
|           | 25    | 40.00 | 47.04 | 53.04 |
|           | 37    | 56.50 | 63.50 | 69.32 |
|           |       |       |       | 54.84 |

Dimension

## X-ON Electronics

Largest Supplier of Electrical and Electronic Components

*Click to view similar products for [D-Sub Standard Connectors](#) category:*

*Click to view products by [Connfly](#) manufacturer:*

Other Similar products are found below :

[DCM37S732N](#) [DAM15P500](#) [DEV09S364GTLF](#) [DEM09P032N](#) [DDM50P732N](#) [DAM15S332N](#) [173109-2218](#) [173109-2466](#) [173109-2436](#)  
[173109-2435](#) [56F706-005-LI](#) [56F711-015](#) [015-0341-000](#) [015-0372-008](#) [015-8544-011](#) [017041-0005](#) [020419-0104](#) [012-0515-000](#) [012-9507-](#)  
[034](#) [012-9507-114](#) [012-9534-001](#) [020745-0008](#) [609-25P](#) [M24308/2-23Z](#) [M243082310F](#) [M243082410F](#) [M243082411F](#) [M24308/4-21](#)  
[CT1A18-11PSA206](#) [CT1N36-5SC](#) [CT2-16S-17PS](#) [CT2-20-15PCAU](#) [CT2-24-12PS](#) [CT2-24-28PSF127A206](#) [CT2-32-9PC](#) [CT6F9767-14-4-](#)  
[14S-5PC](#) [CT6FA10SL-4PS](#) [CT7-18-10SC](#) [CT7-18-10SCAU](#) [CT7-18-12SCAU](#) [CT7-18-1PC](#) [CT7-18-1PCAU](#) [CT7-18-21SCAU](#) [M83513/01-](#)  
[FC](#) [M83723/76W24619 L/C](#) [M85049/48-3-2F](#) [69001-865](#) [6STD09PCM99B70X](#) [6STD09SCM99B30X](#) [6STD09SCT99S40X](#)