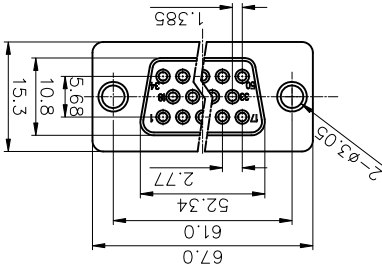
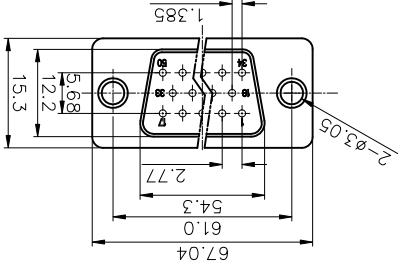
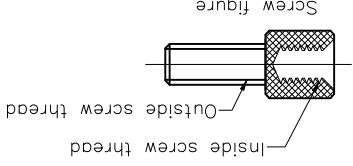
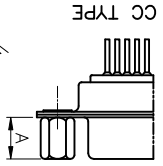
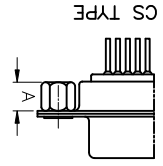
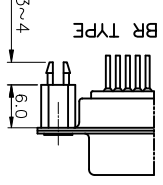
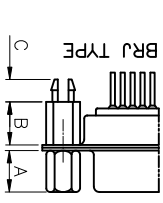
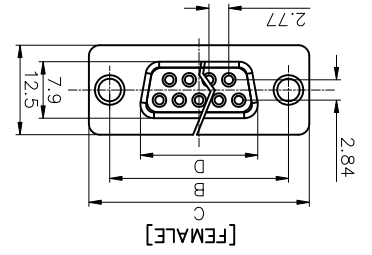
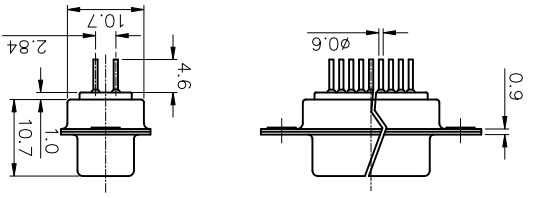
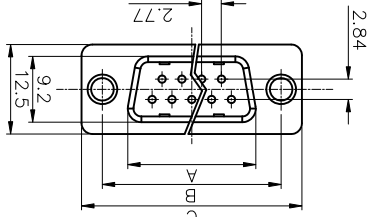
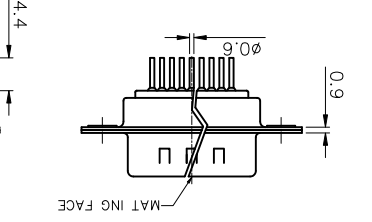
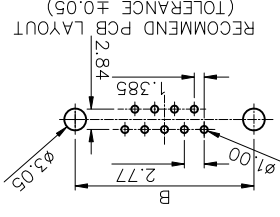


Position	A±0.2	B±0.2	C±0.3	D
9	17.90	24.99	30.80	16.33
15	26.50	33.32	39.14	24.66
25	40.00	47.04	53.04	38.38
37	56.50	63.50	69.32	54.84



GENERAL TOLERANCE		ANGLE TOLERANCE	
X.	±0.60	X.	±5°
.X	±0.38	.X	±3°
.XX	±0.25	.XX	±2°

DRAWING NO.		SCALE	
C-DS1034-XXXXXX-F		1:1	
DRAWING TYPE CUSTOMER		SHEET 1 OF 1	

**晨翔电子有限公司**  
**CONNLY CONNELY ELECTRONIC CO., LTD**

DRAWING TYPE CUSTOMER		SHEET SIZE	
DRAWING TYPE CUSTOMER		A4	
SERIES DS1034 SERIES		SHEET SIZE	
UNITS mm		SHEET SIZE	
PROJECTION		UNITS	
D-SUB DIP STRAIGHT TYPE		D-SUB DIP STRAIGHT TYPE	
TITLE		D-SUB DIP STRAIGHT TYPE	

- NOTES:
1. ELECTRICAL CHARACTERISTICS:
    - 1.1 CONTACT RESISTANCE: 20mΩ Max. INITIAL.
    - 1.2 DIELECTRIC WITHSTANDING VOLTAGE: 500V AC(rms) FOR 1 MINUTE.
    - 1.3 INSULATION RESISTANCE: 1000MΩ Min.
  2. ENVIRONMENT CHARACTERISTICS:
    - TEMPERATURE RANGE: -40°C~+105°C.
  3. PART NUMBER: DS1034
  4. PRODUCT NUMBER CODE: DS1034-X X X X X X X X X X X X
- SCREW DIM. A
- |  |         |         |         |
|--|---------|---------|---------|
| S: Standard(W/O nut)   | 1: 5.00 | 2: 3.00 | 3: 5.20 |
| 4: 4.80  | 5: 5.80 | 6: 4.00 |         |
| 7: 4.80mm(inside thread M2.6*0.45p, outside thread unc#4-40) |         |         |         |
| 8: 4.80mm(inside thread M3.0*0.5p, outside thread unc#4-40)  |         |         |         |
- SCREW TYPE
- S: Standard(W/O nut)  
2: CS TYPE  
3: BR TYPE  
4: BRJ TYPE  
DIM. DIM. B: 6.00 C: 3~4mm
- 5: BRJ TYPE DIM. B: 6.00 C: 5~6mm  
6: BRJ TYPE DIM. B: 6.00 C: 3~4mm  
7: BRJ TYPE DIM. B: 6.00 C: 3~4mm  
8: BRJ TYPE DIM. B: 6.00 C: 3~4mm
- CONTACT PLATING
- Si: FULL GOLD FLASH  
0: SELECTIVE GOLD FLASH
- SHELL PLATING
- T: FRONT & BACK SHELL TIN  
N: FRONT SHELL NICKEL, BACK SHELL TIN
- HOUSING COLOR
- B: BLACK W: WHITE  
U: BLUE
- CONNECTOR TYPE
- M: MALE F: FEMALE
- NO.OF CONTACTS
- 09: 9pos. 15: 15pos. 25: 25pos.  
37: 37pos. 50: 50pos.

REV.	DESCRIPTION	DRAWN	DATE	CHECKED	DATE
F	ADD Pos TYPE	JLZ	03/29/16		
C	整理図面	YCH	05/21/08		
B	ADD SCREW TYPE	DMJ	06/27/07		
A	NEW RELEASE	LJH	04/27/05		
	APPROVED				

## X-ON Electronics

Largest Supplier of Electrical and Electronic Components

*Click to view similar products for [D-Sub Standard Connectors](#) category:*

*Click to view products by [Connfly](#) manufacturer:*

Other Similar products are found below :

[DCM37S732N](#) [DAM15P500](#) [DEV09S364GTLF](#) [DEM09P032N](#) [DDM50P732N](#) [DAM15S332N](#) [173109-2218](#) [173109-2466](#) [173109-2436](#)  
[173109-2435](#) [56F706-005-LI](#) [56F711-015](#) [015-0341-000](#) [015-0372-008](#) [015-8544-011](#) [017041-0005](#) [020419-0104](#) [012-0515-000](#) [012-9507-](#)  
[034](#) [012-9507-114](#) [012-9534-001](#) [020745-0008](#) [609-25P](#) [M24308/2-23Z](#) [M243082310F](#) [M243082410F](#) [M243082411F](#) [M24308/4-21](#)  
[CT1A18-11PSA206](#) [CT1N36-5SC](#) [CT2-16S-17PS](#) [CT2-20-15PCAU](#) [CT2-24-12PS](#) [CT2-24-28PSF127A206](#) [CT2-32-9PC](#) [CT6F9767-14-4-](#)  
[14S-5PC](#) [CT6FA10SL-4PS](#) [CT7-18-10SC](#) [CT7-18-10SCAU](#) [CT7-18-12SCAU](#) [CT7-18-1PC](#) [CT7-18-1PCAU](#) [CT7-18-21SCAU](#) [M83513/01-](#)  
[FC](#) [M83723/76W24619 L/C](#) [M85049/48-3-2F](#) [69001-865](#) [6STD09PCM99B70X](#) [6STD09SCM99B30X](#) [6STD09SCT99S40X](#)