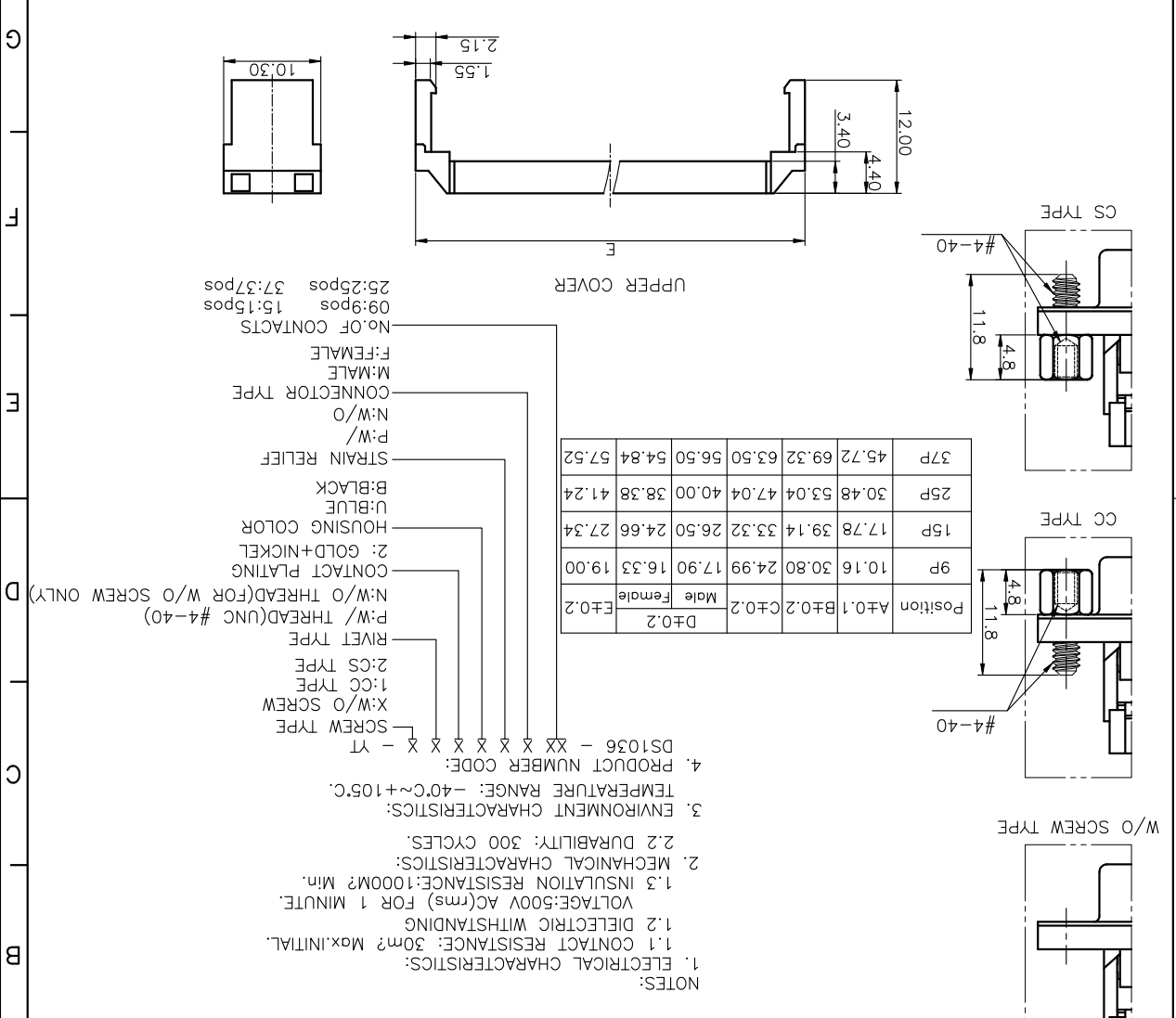


DRAWING NO. C-DS1036-XXXXXXX-XT-D		SCALE 1:1		DRAWING TYPE CUSTOMER	
SHEET 1 OF 1		SHEET 1 OF 1		DRAWING TYPE CUSTOMER	
GENERAL TOLERANCE		ANGLE TOLERANCE		PROJECTION	
X. ±0.60	.X. ±0.38	.X. ±3.	.X. ±2.	UNITS mm	
.XX ±0.25	.XX ±1.	SHEET SIZE A4		SERIES DS1036 SERIES	
DRAWING TYPE CUSTOMER		TITLE		I.D.C D-SUB	

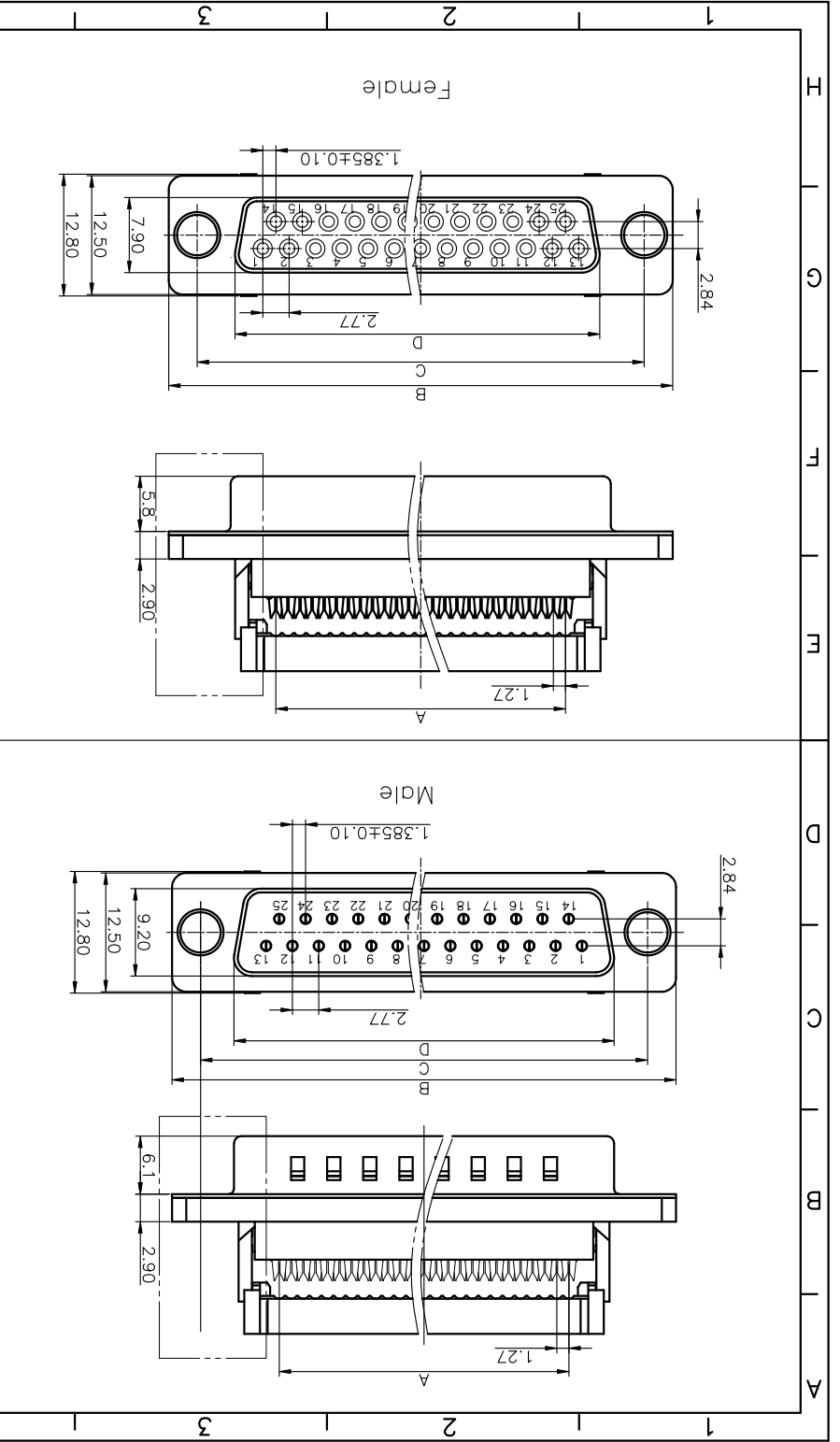


REV.	DESCRIPTION	DRAWN	CHECKED	APPROVED
A	NEW RELEASE	YCH 02/01/07	~	LJC 02/01/07
B	修改	YCH 08/15/07	~	LJC 08/15/07
D	Drawing Update	JLZ 07/25/16	~	

NOTES:
 1. ELECTRICAL CHARACTERISTICS:
 1.1 CONTACT RESISTANCE: 30mΩ Max. INITIAL.
 1.2 DIELECTRIC WITHSTANDING
 VOLTAGE: 500V AC(rms) FOR 1 MINUTE.
 1.3 INSULATION RESISTANCE: 1000MΩ Min.
 2. MECHANICAL CHARACTERISTICS:
 2.1 DURABILITY: 300 CYCLES.
 2.2 DURABILITY: 300 CYCLES.
 3. ENVIRONMENTAL CHARACTERISTICS:
 TEMPERATURE RANGE: -40°C~+105°C.
 4. PRODUCT NUMBER CODE: DS1036 - XX X X X X X X X X - XT

- SCREW TYPE
- X/W/O SCREW
- 1:CC TYPE
- 2:CS TYPE
- RIVET TYPE
- P/W/ THREAD(UNC #4-40)
- N/W/O THREAD(FOR W/O SCREW ONLY)
- CONTACT PLATING
- 2: GOLD+NICKEL
- HOUSING COLOR
- U:BLUE
- B:BLACK
- STRAIN RELIEF
- P:W/
- N:W/O
- CONNECTOR TYPE
- F:FEMALE
- M:MALE
- N.O.F CONTACTS
- 09:9pos
- 15:15pos
- 25:25pos
- 37:37pos

Position	A±0.1	B±0.2	C±0.2	D±0.2	Male	Female
37P	45.72	69.32	63.50	56.50	54.84	57.52
25P	30.48	53.04	47.04	40.00	38.38	41.24
15P	17.78	39.14	33.32	26.50	24.66	27.34
9P	10.16	30.80	24.99	17.90	16.33	19.00



X-ON Electronics

Largest Supplier of Electrical and Electronic Components

Click to view similar products for [D-Sub Standard Connectors](#) category:

Click to view products by [Connfly](#) manufacturer:

Other Similar products are found below :

[DCM37S732N](#) [DAM15P500](#) [DEV09S364GTLF](#) [DEM09P032N](#) [DDM50P732N](#) [DAM15S332N](#) [173109-2218](#) [173109-2466](#) [173109-2436](#)
[173109-2435](#) [56F706-005-LI](#) [56F711-015](#) [015-0341-000](#) [015-0372-008](#) [015-8544-011](#) [017041-0005](#) [012-0515-000](#) [012-9507-034](#) [012-9507-114](#) [012-9534-001](#) [020745-0008](#) [609-25P](#) [M24308/2-23Z](#) [M243082310F](#) [M243082410F](#) [M243082411F](#) [M24308/4-21](#) [CT1A18-11PSA206](#)
[CT1N36-5SC](#) [CT2-16S-17PS](#) [CT2-20-15PCAU](#) [CT2-24-12PS](#) [CT2-24-28PSF127A206](#) [CT2-32-9PC](#) [CT6F9767-14-4-14S-5PC](#)
[CT6FA10SL-4PS](#) [CT7-18-10SC](#) [CT7-18-10SCAU](#) [CT7-18-12SCAU](#) [CT7-18-1PC](#) [CT7-18-1PCAU](#) [CT7-18-21SCAU](#) [M83513/01-FC](#)
[M83723/76W24619 L/C](#) [M85049/48-3-2F](#) [69001-865](#) [6STD09PCM99B70X](#) [6STD09SCT99S40X](#) [6STD15PCT99S40X](#)
[6STD15SCM99B30X](#)