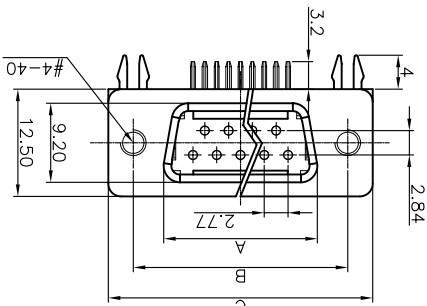
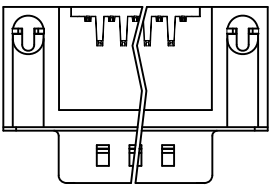
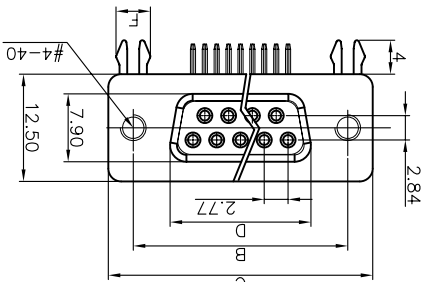
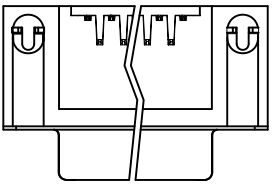


Position	A±0.2	B±0.2	C±0.2	D
9	17.90	24.99	30.80	16.33
15	26.50	33.32	39.14	24.66
25	40.00	47.04	53.04	38.38
37	56.50	63.50	69.32	54.84

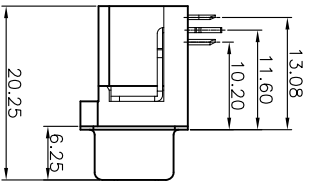
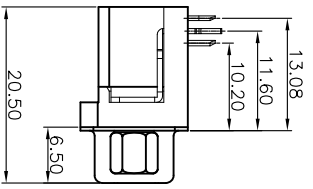
Dimension



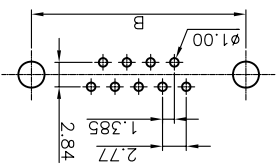
[MALE]



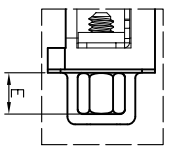
[FEMALE]



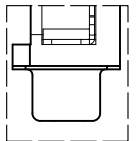
RECOMMEND PCB LAYOUT(TOLERANCE ±0.05)
(VIEW FROM TOP SIDE)



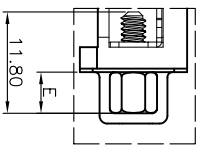
WITH SCREW AND RIVET TYPE



WITH RIVET TYPE



WITH SCREW TYPE



GENERAL TOLERANCE	X. ±0.50	X. ±0.30	X. ±0.20
ANGLE TOLERANCE	°. ±3	′. ±2	″. ±1
DRAWING NO.	C-DS1037-01-XXXXXX-B		
SCALE	1:1	SHEET 1 OF 1	
DRAWING TYPE	ASSEMBLY		

CONNLY CONNLY ELECTRONIC CO., LTD

晨翔电子有限公司

PROJECTION	第一角画法	TITLE	
UNITS	mm	SHEET SIZE	A4
SERIES	DS1037-01 SERIES		

- SCREW DIM. E
- 4: 4.80mm
- 5: 5.80mm
- 6: 4.80mm(inside thread M2.6*0.45p, outside thread unc#4-40)
- ③ M3: 4.80mm(inside thread M3.0, outside thread unc#4-40)
- BOARD LOCK DIM. F
- 4: 4.00mm
- 7: 3.70mm
- CONTACT PLATING
- T: SELECTIVE GOLD FLASH
- SI: FULL GOLD FLASH
- 6: FULL TIN
- COLOR OF HOUSING
- K: BLACK
- B: BLUE
- SCREW TYPE
- A: WITH SCREW TYPE
- B: WITH RIVET TYPE
- C: WITH SCREW AND RIVET TYPE
- D: RIVET TYPE WITH SCREW IN BULD PACKAGE
- SHELL PLATING
- N: Nickel
- T: Tin
- CONNECTOR TYPE
- M: MALE
- F: FEMALE
- No. OF CONTACT
- 09: 9pos.
- 15: 15pos.
- 25: 25pos.
- 37: 37pos.

NOTES: 备注

1. PRODUCTS PERFORMANCE:
 1.0 VOLTAGE RATING: 250V AC.
 1.1 CONTACT CURRENT RATING: 1.5A MAX. PER PIN.
 1.2 CONTACT RESISTANCE: 20MΩ MAX.
 1.3 DIELECTRIC WITHSTANDING VOLTAGE: 500V AC(ms)
 FOR 1 MINUTE.
 1.4 INSULATION RESISTANCE: 1000MΩ MIN.
 1.5 OPERATING TEMPERATURE: -40°C~+105°C.

2. PRODUCT NUMBER CODE:
 DS1037 -01- X X X X X X X X X X

REV.	DESCRIPTION	DRAWN	CHECKED	APPROVED
B	新增螺丝规格	YCH 11/05/11'		
A	NEW RELEASE	LJH 06/14/07'		
				LJC 06/14/07'

1 2 3 4 5 6 7 8

A B C D E F G H

X-ON Electronics

Largest Supplier of Electrical and Electronic Components

Click to view similar products for [D-Sub Standard Connectors](#) category:

Click to view products by [Connfly](#) manufacturer:

Other Similar products are found below :

[DCM37S732N](#) [DAM15P500](#) [DEV09S364GTLF](#) [DEM09P032N](#) [DDM50P732N](#) [DAM15S332N](#) [173109-2218](#) [173109-2466](#) [173109-2436](#)
[173109-2435](#) [56F706-005-LI](#) [56F711-015](#) [015-0341-000](#) [015-0372-008](#) [015-8544-011](#) [017041-0005](#) [020419-0104](#) [012-0515-000](#) [012-9507-](#)
[034](#) [012-9507-114](#) [012-9534-001](#) [020745-0008](#) [609-25P](#) [M24308/2-23Z](#) [M243082310F](#) [M243082410F](#) [M243082411F](#) [M24308/4-21](#)
[CT1A18-11PSA206](#) [CT1N36-5SC](#) [CT2-16S-17PS](#) [CT2-20-15PCAU](#) [CT2-24-12PS](#) [CT2-24-28PSF127A206](#) [CT2-32-9PC](#) [CT6F9767-14-4-](#)
[14S-5PC](#) [CT6FA10SL-4PS](#) [CT7-18-10SC](#) [CT7-18-10SCAU](#) [CT7-18-12SCAU](#) [CT7-18-1PC](#) [CT7-18-1PCAU](#) [CT7-18-21SCAU](#) [M83513/01-](#)
[FC](#) [M83723/76W24619 L/C](#) [M85049/48-3-2F](#) [69001-865](#) [6STD09PCM99B70X](#) [6STD09SCM99B30X](#) [6STD09SCT99S40X](#)