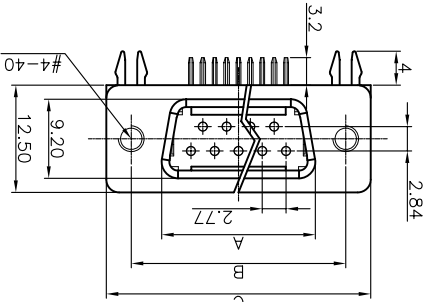
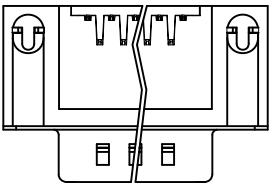
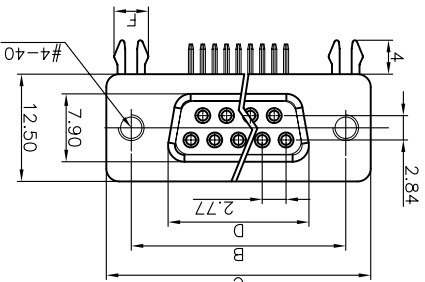
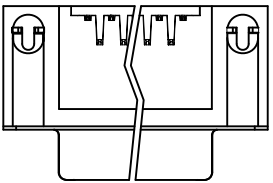


Position	A±0.2	B±0.2	C±0.2	D
9	17.90	24.99	30.80	16.33
15	26.50	33.32	39.14	24.66
25	40.00	47.04	53.04	38.38
37	56.50	63.50	69.32	54.84

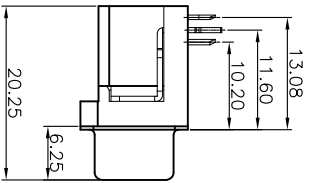
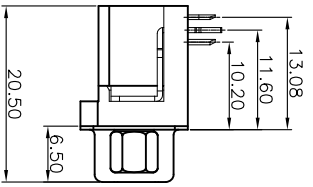
Dimension



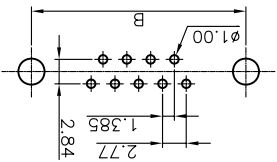
[MALE]



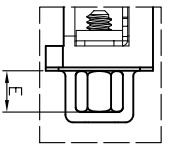
[FEMALE]



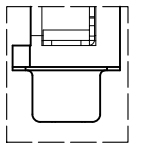
RECOMMEND PCB LAYOUT(TOLERANCE ±0.05)  
(VIEW FROM TOP SIDE)



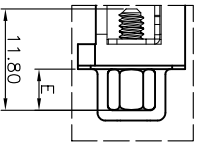
WITH SCREW AND RIVET TYPE



WITH RIVET TYPE



WITH SCREW TYPE



GENERAL TOLERANCE		ANGLE TOLERANCE	
X.	±0.50	X.	±3.
.X	±0.30	.X	±2.
.XX	±0.20	.XX	±1.
DRAWING TYPE ASSEMBLY		SHEET 1 OF 1	
SCALE 1:1		DRAWING NO. C-DS1037-01-XXXXXX-B	

PROJECTION	UNIT	SHEET SIZE	SERIES	TITLE	
第三角画法	mm	A4	DS1037-01 SERIES	D-SUB RIGHT ANGLE(9.4mm) TYPE	

2. PRODUCT NUMBER CODE: DS1037 -01 - X X X X X X X X X X

1. PRODUCTS PERFORMANCE:  
 1.0 VOLTAGE RATING: 250V AC.  
 1.1 CONTACT CURRENT RATING: 1.5A MAX. PER PIN.  
 1.2 CONTACT RESISTANCE: 20mΩ MAX.  
 1.3 DIELECTRIC WITHSTANDING VOLTAGE: 500V AC(ms)  
 FOR 1 MINUTE.  
 1.4 INSULATION RESISTANCE: 1000MΩ MIN.  
 1.5 OPERATING TEMPERATURE: -40°C~+105°C.

NOTE: 备注

SCREW DIM. E  
 4: 4.80mm  
 5: 5.80mm  
 6: 4.80mm(inside thread M2.6\*0.45p, outside thread unc#4-40)  
 M3: 4.80mm(inside thread M3.0, outside thread unc#4-40)

BOARD LOCK DIM. F  
 4: 4.00mm  
 7: 3.70mm

CONTACT PLATING  
 T: SELECTIVE GOLD FLASH  
 S: FULL GOLD FLASH  
 6: FULL TIN  
 COLOR OF HOUSING  
 K: BLACK  
 B: BLUE

SCREW TYPE  
 A: WITH SCREW TYPE  
 B: WITH RIVET TYPE  
 C: WITH SCREW AND RIVET TYPE  
 D: RIVET TYPE WITH SCREW IN BULD PACKAGE  
 SHELL PLATING  
 N: Nickel  
 T: Tin  
 CONNECTOR TYPE  
 M: MALE  
 F: FEMALE

No. OF CONTACT  
 09: 9pos.  
 15: 15pos.  
 25: 25pos.  
 37: 37pos.

REV.	DESCRIPTION	DRAWN	CHECKED	APPROVED
B	新增螺丝规格	YCH 11/05/11'	~	
A	NEW RELEASE	LJH 06/14/07'	~	LJC 06/14/07'

晨翔电子有限公司 CONNPLY ELECTRONIC CO., LTD

## X-ON Electronics

Largest Supplier of Electrical and Electronic Components

*Click to view similar products for [D-Sub Standard Connectors](#) category:*

*Click to view products by [Connfly](#) manufacturer:*

Other Similar products are found below :

[DCM37S732N](#) [DAM15P500](#) [DEV09S364GTLF](#) [DEM09P032N](#) [DDM50P732N](#) [DAM15S332N](#) [173109-2218](#) [173109-2466](#) [173109-2436](#)  
[173109-2435](#) [56F706-005-LI](#) [56F711-015](#) [015-0341-000](#) [015-0372-008](#) [015-8544-011](#) [017041-0005](#) [020419-0104](#) [012-0515-000](#) [012-9507-](#)  
[034](#) [012-9507-114](#) [012-9534-001](#) [020745-0008](#) [609-25P](#) [M24308/2-23Z](#) [M243082310F](#) [M243082410F](#) [M243082411F](#) [M24308/4-21](#)  
[CT1A18-11PSA206](#) [CT1N36-5SC](#) [CT2-16S-17PS](#) [CT2-20-15PCAU](#) [CT2-24-12PS](#) [CT2-24-28PSF127A206](#) [CT2-32-9PC](#) [CT6F9767-14-4-](#)  
[14S-5PC](#) [CT6FA10SL-4PS](#) [CT7-18-10SC](#) [CT7-18-10SCAU](#) [CT7-18-12SCAU](#) [CT7-18-1PC](#) [CT7-18-1PCAU](#) [CT7-18-21SCAU](#) [M83513/01-](#)  
[FC](#) [M83723/76W24619 L/C](#) [M85049/48-3-2F](#) [69001-865](#) [6STD09PCM99B70X](#) [6STD09SCM99B30X](#) [6STD09SCT99S40X](#)