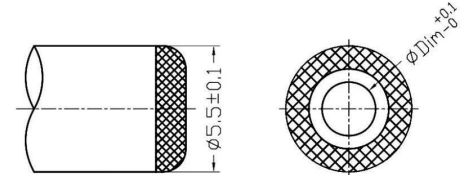
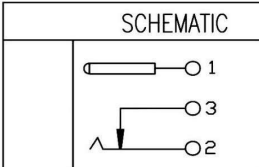
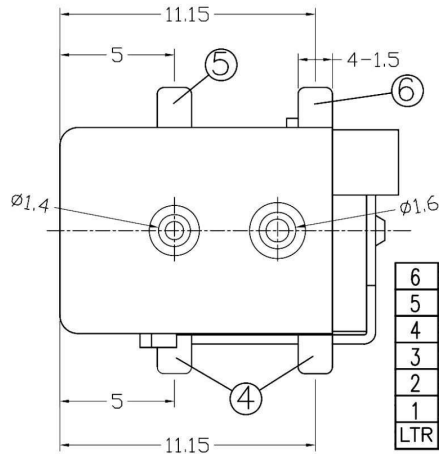


T:1.6 Dimensions of PC board holes  
Tolerance : ±0.1(Printed-top view)



DC PLUG-REF



LTR	PART NAME	QTY	MATERIAL	REMARK
6	SHUN TERMINAL	1	BRASS t=0.40	MB:Ni Ag PLATED
5	TIP SPRING	1	PHOSPHOR BRONZE t=0.30	MB:Ni Ag PLATED
4	CENTER PIN TERMINAL	1	BRASS t=0.40	MB:Ni Ag PLATED
3	CENTER PIN	1	COPPER ALLOY	MB:Cu Cu/Sn PLATED
2	COVER	1	PA9T	UL-94V0(BLACK)
1	HOUSING	1	PA9T	UL-94V0(BLACK)

Electrical characteristics

Item	Conditions	Specification
1 Rating		DC 12V 3A
2 Contact resistance	1K Hz Measured at small current (1A or less)	30 mΩ or less
3 Insulation resistance	A voltage of 500V DC shall be applied for a minute. Between conductors which should not make contact under normal conditions after which measurement shall be made.	100MΩ MIN.
4 Dielectric strength	Between conductors which should not make contact under normal conditions. 500V AC (50 to 60Hz) for 1 min.(trip current 2mA)	Without distinct damage.

RoHS Compliant

APPD. 核准 HELEN	SCALE 比例 参考	TOLERANCE 容許公差 XXX ±0.25 X ±3 XXX ±0.20 XX ±1 XXX ±0.15	PART NAME 品名 DC POWER JACK SMT TYPE Φ2.0mm OR Φ2.5mm NORMAL CLOSE TIN PLATING BLACK INSULATOR REEL PACKING ROHS
DWG. 製圖 ABBY	UNIT 單位 MM	SIZE. 紙張尺寸 A4	PART NO. 料號
DATE 制表日 2017/01/24	PAGE 張數 1 OF 1	REV. 版次 C	

## **X-ON Electronics**

Largest Supplier of Electrical and Electronic Components

*Click to view similar products for [Control Switches](#) category:*

*Click to view products by [Ninigi](#) manufacturer:*

Other Similar products are found below :

[80887-99](#) [80932-99](#) [86855-00](#) [88814-30](#) [1424293-1](#) [HW4S-2TC10](#) [89721-12](#) [89804-08](#) [SSN](#) [RL01801](#) [ASD2L20N-LVO](#) [50051857-17](#)  
[50099156-001-05](#) [51.155R-15200](#) [50058920-26](#) [CP-FA51](#) [CP-FA49](#) [ACCU-SC/L-3000](#) [PP9M](#) [PP87G](#) [PP86GA](#) [PP71G](#) [PP70G](#) [PP6G](#)  
[PP62G](#) [PP58BL](#) [PP56G](#) [PP86GB](#) [PP77GA](#) [PP76G](#) [PP4M](#) [PP47G](#) [PP46G](#) [PP41M](#) [PP40G](#) [PP32G](#) [RD-20](#) [PP23M](#) [PP12G](#) [PORTAPRO](#)  
[POM-2708](#) [PNB-2005](#) [3057.0012](#) [CV-075](#) [CV-140SB](#) [CV-150](#) [CV-150S](#) [214X20XK](#) [CV-180](#) [CV-200MB](#)