

LOW DROPOUT VOLTAGE REGULATOR

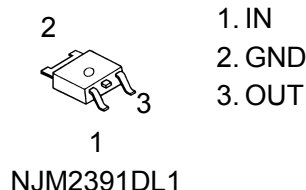
■ GENERAL DESCRIPTION

The NJM2391 is low dropout voltage regulators featuring high precision voltage.

It is suitable for Notebook PCs, PC cards and hard disks where 3.3V need to be generated from 5V supply.

A small TO-252 package is adopted for the space saving.

■ PACKAGE OUTLINE



- 1. IN
- 2. GND
- 3. OUT

■ FEATURES

- Output Current $I_o(\text{max.})=1\text{A}$
- High Precision Output Voltage $V_o\pm 1\%$
- Low Dropout Voltage $\Delta V_{I-O} = 1.1\text{V typ. At } I_o=1\text{A}$
- Internal Excessive Voltage Protection Circuit
- Internal Short Circuit Current Limit
- Internal Thermal Overload Protection
- Bipolar Technology
- Package Outline TO-252

■ ABSOLUTE MAXIMUM RATINGS

($T_a=25^\circ\text{C}$)

PARAMETER	SYMBOL	RATINGS	UNIT
Input Voltage	V^+	+10	V
Power Dissipation	P_D	TO-252 8 ($T_c=25^\circ\text{C}$) 0.8($T_a\leq 25^\circ\text{C}$)	W
Operating Temperature	T_{opr}	-40 ~ +85	$^\circ\text{C}$
Storage Temperature	T_{stg}	-50 ~ +125	$^\circ\text{C}$

■ OUTPUT VOLTAGE RANK LIST

Device Name	V_{OUT}
NJM2391DL1-25	2.5V
NJM2391DL1-26	2.6V
NJM2391DL1-28	2.85V
NJM2391DL1-03	3.0V
NJM2391DL1-33	3.3V
NJM2391DL1-35	3.5V
NJM2391DL1-05	5.0V

■ ELECTRICAL CHARACTERISTICS (C_{IN}=0.1μF, Co=10μF, T_j=25°C)

Measurement is to be conducted is pulse testing

PARAMETER	SYMBOL	TEST CONDITION	MIN.	TYP.	MAX.	UNIT
Vo=2.5V Version Output Voltage	V _O	V _{IN} =5.5V, I _o =0.01A	2.475	2.5	2.525	V
Line Regulation	ΔV _O -V _{IN}	V _{IN} =4V~9V, I _o =1A	–	–	50	mV
Load Regulation	ΔV _O -I _o	V _{IN} =5.5V, I _o =0~1A	–	–	50	mV
Quiescent Current	I _Q	V _{IN} =5.5V, I _o =0A	–	2.3	4.0	mA
Ripple Rejection	RR	V _{IN} =5.5V, e _{in} =2V _{P-P} f=120Hz, I _o =0.5A	53	63	–	dB
Dropout Voltage	ΔV _{I-O}	I _o =1A	–	1.1	1.2	V
Output Noise Voltage	V _{NO}	V _{IN} =5.5V, I _o =0.5A BW=10Hz~100kHz	–	85	185	μV
Vo=2.6V Version Output Voltage	V _O	V _{IN} =5.6V, I _o =0.01A	2.574	2.60	2.626	V
Line Regulation	ΔV _O -V _{IN}	V _{IN} =4.1V~9.1V, I _o =1A	–	–	52	mV
Load Regulation	ΔV _O -I _o	V _{IN} =5.6V, I _o =0~1A	–	–	52	mV
Quiescent Current	I _Q	V _{IN} =5.6V, I _o =0A	–	2.3	4.0	mA
Ripple Rejection	RR	V _{IN} =5.6V, e _{in} =2V _{P-P} f=120Hz, I _o =0.5A	53	63	–	dB
Dropout Voltage	ΔV _{I-O}	I _o =1A	–	1.1	1.2	V
Output Noise Voltage	V _{NO}	V _{IN} =5.6V, I _o =0.5A BW=10Hz~100kHz	–	87	187	μV
Vo=2.85V Version Output Voltage	V _O	V _{IN} =5.85V, I _o =0.01A	2.82	2.85	2.88	V
Line Regulation	ΔV _O -V _{IN}	V _{IN} =4.35V~9.35V, I _o =1A	–	–	57	mV
Load Regulation	ΔV _O -I _o	V _{IN} =5.85V, I _o =0~1A	–	–	57	mV
Quiescent Current	I _Q	V _{IN} =5.85V, I _o =0A	–	2.3	4.0	mA
Ripple Rejection	RR	V _{IN} =5.85V, e _{in} =2V _{P-P} f=120Hz, I _o =0.5A	53	63	–	dB
Dropout Voltage	ΔV _{I-O}	I _o =1A	–	1.1	1.2	V
Output Noise Voltage	V _{NO}	V _{IN} =5.85V, I _o =0.5A BW=10Hz~100kHz	–	90	190	μV
Vo=3V Version Output Voltage	V _O	V _{IN} =6V, I _o =0.01A	2.97	3.00	3.03	V
Line Regulation	ΔV _O -V _{IN}	V _{IN} =4.5V~9.5V, I _o =1A	–	–	60	mV
Load Regulation	ΔV _O -I _o	V _{IN} =6V, I _o =0~1A	–	–	60	mV
Quiescent Current	I _Q	V _{IN} =6V, I _o =0A	–	2.3	4.0	mA
Ripple Rejection	RR	V _{IN} =6V, e _{in} =2V _{P-P} f=120Hz, I _o =0.5A	52	62	–	dB
Dropout Voltage	ΔV _{I-O}	I _o =1A	–	1.1	1.2	V
Output Noise Voltage	V _{NO}	V _{IN} =6V, I _o =0.5A BW=10Hz~100kHz	–	95	195	μV

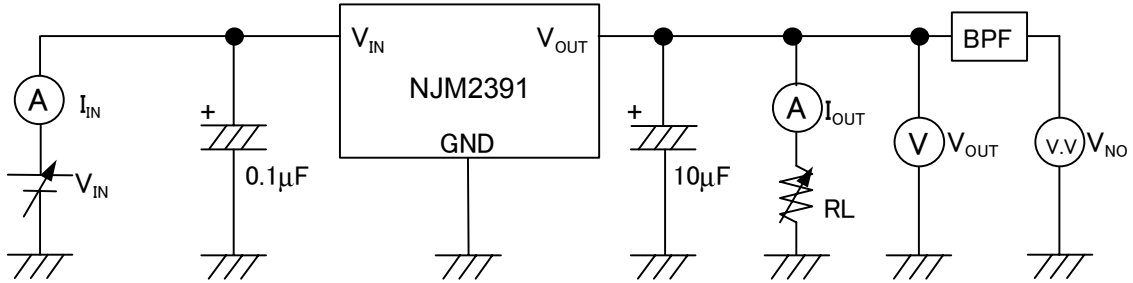
■ ELECTRICAL CHARACTERISTICS (C_{IN}=0.1μF, Co=10μF, T_j=25°C)

Measurement is to be conducted is pulse testing

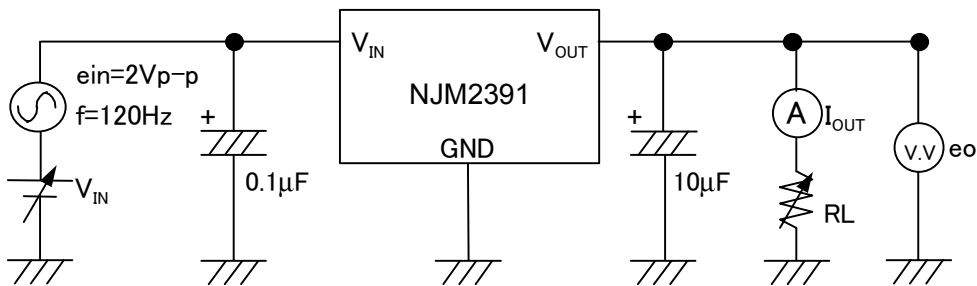
PARAMETER	SYMBOL	TEST CONDITION	MIN.	TYP.	MAX.	UNIT
Vo=3.3V Version Output Voltage	V _O	V _{IN} =6.3V, I _o =0.01A	3.267	3.30	3.333	V
Line Regulation	ΔV _O -V _{IN}	V _{IN} =4.8V~9.8V, I _o =1A	–	–	66	mV
Load Regulation	ΔV _O -I _o	V _{IN} =6.3V, I _o =0~1A	–	–	66	mV
Quiescent Current	I _Q	V _{IN} =6.3V, I _o =0A	–	2.3	4.0	mA
Ripple Rejection	RR	V _{IN} =6.3V, e _{in} =2V _{P-P} f=120Hz, I _o =0.5A	52	62	–	dB
Dropout Voltage	ΔV _{I-O}	I _o =1A	–	1.1	1.2	V
Output Noise Voltage	V _{NO}	V _{IN} =6.3V, I _o =0.5A BW=10Hz~100kHz	–	100	200	μV
Vo=3.5V Version Output Voltage	V _O	V _{IN} =6.5V, I _o =0.01A	3.465	3.50	3.535	V
Line Regulation	ΔV _O -V _{IN}	V _{IN} =5V~10V, I _o =1A	–	–	70	mV
Load Regulation	ΔV _O -I _o	V _{IN} =6.5V, I _o =0~1A	–	–	70	mV
Quiescent Current	I _Q	V _{IN} =6.5V, I _o =0A	–	2.3	4.0	mA
Ripple Rejection	RR	V _{IN} =6.5V, e _{in} =2V _{P-P} f=120Hz, I _o =0.5A	52	62	–	dB
Dropout Voltage	ΔV _{I-O}	I _o =1A	–	1.1	1.2	V
Output Noise Voltage	V _{NO}	V _{IN} =6.5V, I _o =0.5A BW=10Hz~100kHz	–	105	205	μV
Vo=5V Version Output Voltage	V _O	V _{IN} =8V, I _o =0.01A	4.95	5.00	5.05	V
Line Regulation	ΔV _O -V _{IN}	V _{IN} =6.5V~9.5V, I _o =1A	–	–	60	mV
Load Regulation	ΔV _O -I _o	V _{IN} =8V, I _o =0~1A	–	–	100	mV
Quiescent Current	I _Q	V _{IN} =8V, I _o =0A	–	2.3	4.0	mA
Ripple Rejection	RR	V _{IN} =8V, e _{in} =2V _{P-P} f=120Hz, I _o =0.5A	50	60	–	dB
Dropout Voltage	ΔV _{I-O}	I _o =1A	–	1.1	1.2	V
Output Noise Voltage	V _{NO}	V _{IN} =8V, I _o =0.5A BW=10Hz~100kHz	–	150	260	μV

■ TEST CIRCUIT

- 1. Output Voltage / Line Regulation / Load Regulation
Quiescent Current / Dropout Voltage / Output Noise Voltage

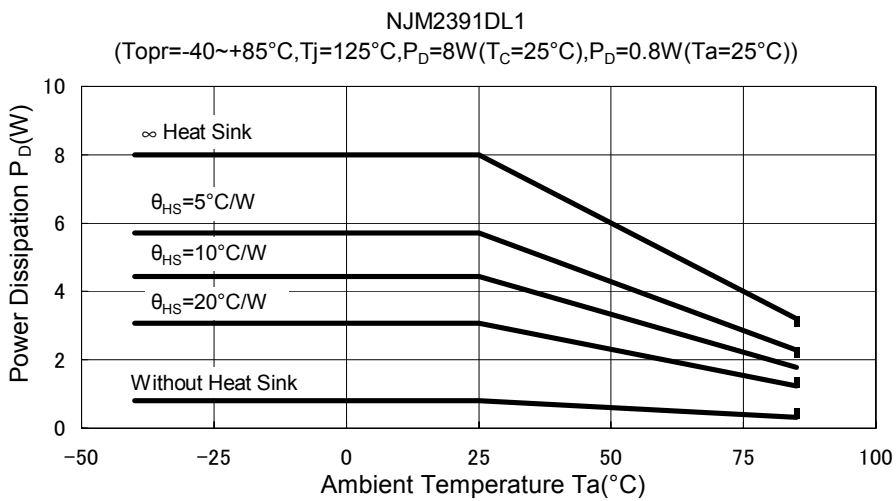


- 2. Ripple Rejection

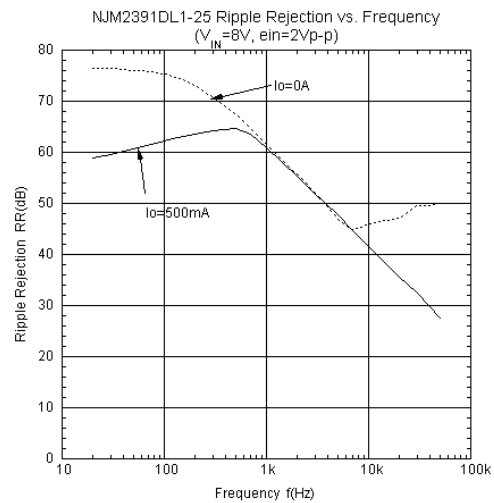
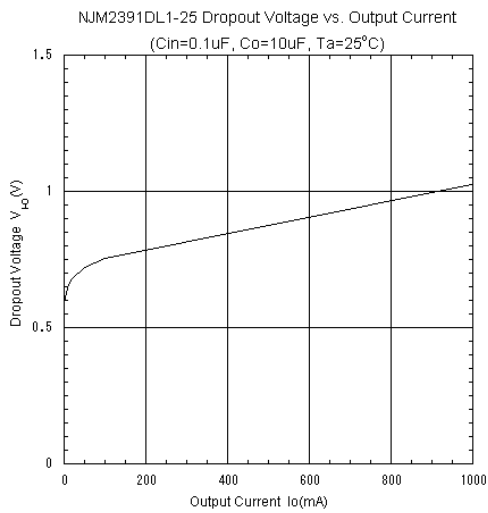
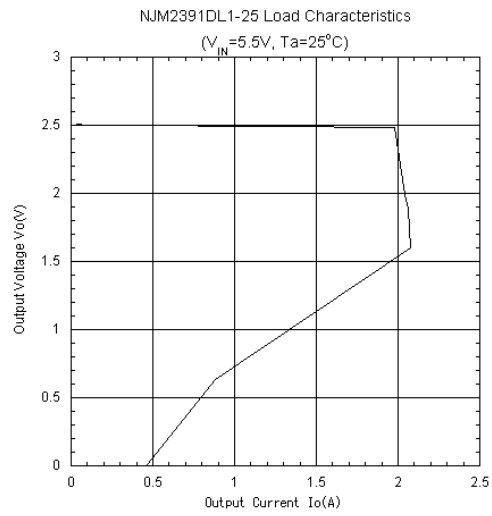
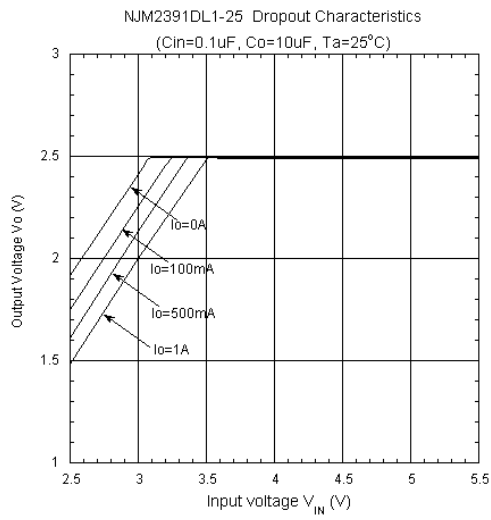


$$RR = 20 \log_{10} [e_{in} / e_o] \text{ (dB)}$$

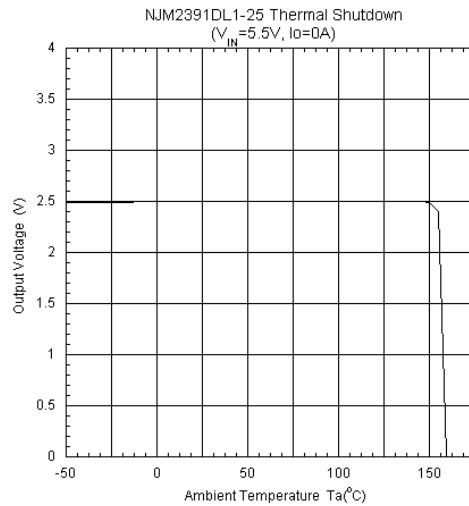
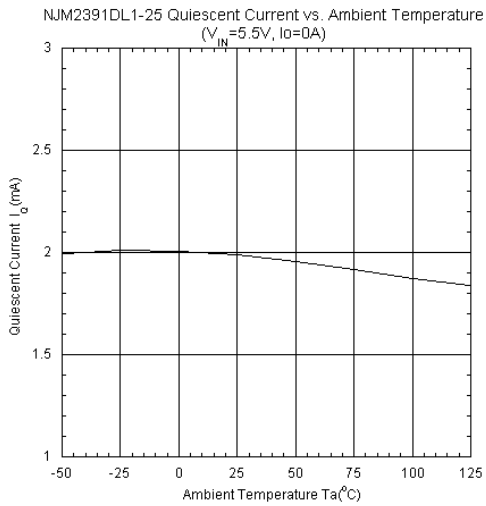
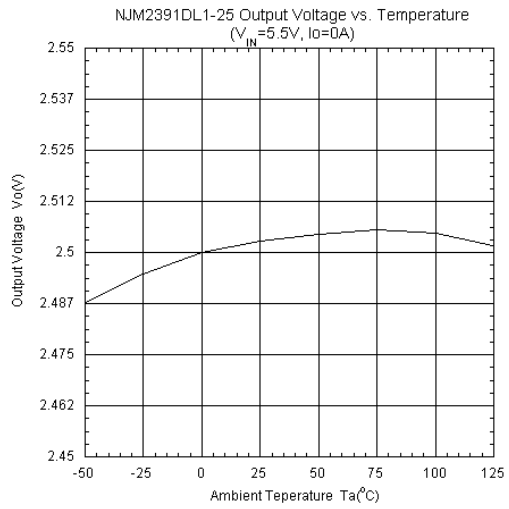
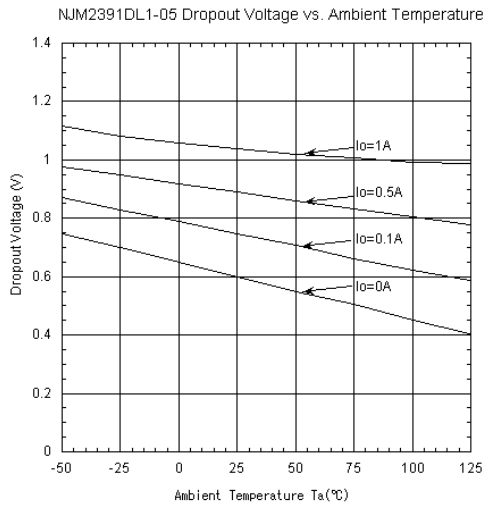
■ POWER DISSIPATION vs. AMBIENT TEMPERATURE



■ ELECTRICAL CHARACTERISTICS



ELECTRICAL CHARACTERISTICS



[CAUTION]

The specifications on this databook are only given for information, without any guarantee as regards either mistakes or omissions. The application circuits in this databook are described only to show representative usages of the product and not intended for the guarantee or permission of any right including the industrial rights.

X-ON Electronics

Largest Supplier of Electrical and Electronic Components

Click to view similar products for [LDO Voltage Regulators](#) category:

Click to view products by [Nisshinbo](#) manufacturer:

Other Similar products are found below :

[AP7363-SP-13](#) [L79M05TL-E](#) [PT7M8202B12TA5EX](#) [TCR3DF185,LM\(CT](#) [TCR3DF24,LM\(CT](#) [TCR3DF285,LM\(CT](#) [TCR3DF31,LM\(CT](#)
[TCR3DF45,LM\(CT](#) [MP2013GQ-33-Z](#) [059985X](#) [NCP4687DH15T1G](#) [701326R](#) [TCR2EN28,LF\(S](#) [NCV8170AXV250T2G](#)
[TCR3DF27,LM\(CT](#) [TCR3DF19,LM\(CT](#) [TCR3DF125,LM\(CT](#) [TCR2EN18,LF\(S](#) [AP2112R5A-3.3TRG1](#) [AP7315-25W5-7](#)
[IFX30081LDVGRNXUMA1](#) [NCV47411PAAJR2G](#) [AP2113KTR-G1](#) [AP2111H-1.2TRG1](#) [ZLDO1117QK50TC](#) [AZ1117IH-1.8TRG1](#)
[AZ1117ID-ADJTRG1](#) [TCR3DG12,LF](#) [MIC5514-3.3YMT-T5](#) [MIC5512-1.2YMT-T5](#) [MIC5317-2.8YM5-T5](#) [SCD7912BTG](#)
[NCP154MX180270TAG](#) [SCD33269T-5.0G](#) [NCV8170BMX330TCG](#) [NCV8170AMX120TCG](#) [NCP706ABMX300TAG](#)
[NCP153MX330180TCG](#) [NCP114BMX075TCG](#) [MC33269T-3.5G](#) [CAT6243-ADJCMT5T](#) [TCR3DG33,LF](#) [AP2127N-1.0TRG1](#)
[TCR4DG35,LF](#) [LT1117CST-3.3](#) [LT1117CST-5](#) [TAR5S15U\(TE85L,F\)](#) [TAR5S18U\(TE85L,F\)](#) [TCR3UG19A,LF](#) [TCR4DG105,LF](#)