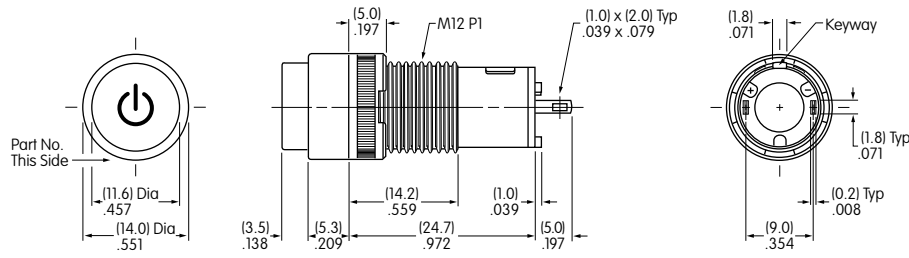


Miniature Indicator with Legend

KB02VA001

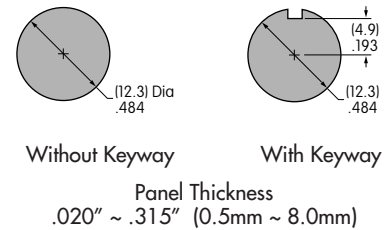
Bushing Mounting



Dimensions in mm/inch

PANEL CUTOUTS

Bushing Mount



BASE INDICATOR

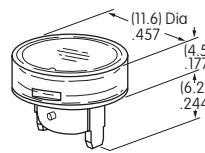
Part Number
KB02KW01

ROUND CAP

AT4160JF
Round Cap

Clear Lens
Green Insert

Material: Polycarbonate
Finish: Glossy



LEGEND SPECIFICATIONS

Legend	Power Symbol
Type Style	N/A
Type Size	N/A
Legend Color	Black
Print Method	Laser Etch on Inside of Lens

Legend shown is illustrative only.
Actual art may vary.

ELECTRICAL SPECIFICATIONS FOR LED

Bright LED AT635F



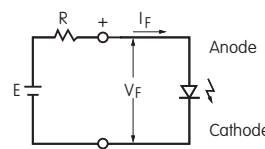
LEDs are colored in OFF state.



T-1 1/2 Bi-pin

LED does not come with a resistor		
Color	Green	
Maximum Forward Current	I_{FM}	30mA
Typical Forward Current	I_F	20mA
Forward Voltage	V_F	2.1V
Maximum Reverse Voltage	V_{RM}	5V
Current Reduction Rate Above 25°C	ΔI_F	0.42mA/°C
Ambient Temperature Range		-25°C ~ +50°C

The electrical specifications shown are determined at a basic temperature of 25°C. If the source voltage exceeds the rated voltage, a ballast resistor is required. The following diagram and formula will assist in calculating the value of the ballast resistor.



$$R = \frac{E - V_F}{I_F}$$

Where: R = Resistor Value (Ohms)
E = Source Voltage (V)
 V_F = Forward Voltage (V)
 I_F = Forward Current (A)

Base Indicator Specifications

Materials & Finishes

Housing:	Polyamide (UL94V-0)
Housing Base:	Polyamide (UL94V-0)
Terminal Base:	Polyester
Lamp Terminals:	Phosphor bronze with nickel flash plating

Environmental Data

Operating Temperature Range:	-25°C through +50°C (-13°F through +122°F)
Humidity:	90 ~ 95% humidity for 96 hours @ 40°C (104°F)
Vibration:	10 ~ 55Hz with peak-to-peak amplitude of 1.5mm traversing the frequency range & returning in 1 minute; 3 right angled directions for 2 hours
Shock:	50G (490m/s ²) acceleration (tested in 6 right angled directions, with 3 shocks in each direction)

RoHS Compliant:



Installation

Mounting Torque:	0.78Nm (6.9 lb•in) maximum
Cap Installation Force:	4.51N (1.0 lbf) maximum downward force on cap
Soldering Time & Temperature:	Manual Soldering: 390°C for 4 seconds, 2 cycles

Standards & Certifications

Flammability Standards: UL94V-0 housing & housing base

X-ON Electronics

Largest Supplier of Electrical and Electronic Components

Click to view similar products for [LED Panel Mount Indicators](#) category:

Click to view products by [NKK Switches](#) manufacturer:

Other Similar products are found below :

[607-1312-310F](#) [607-3232-140F](#) [6091M1-24V](#) [6091M5-24V](#) [6091M7-24V](#) [821-0331-503](#) [FL2870C8R](#) [FL2950WL7B](#) [FL589WL8R](#)
[Q6P3BXXB12E](#) [H8630FBBA3](#) [MPC5ADW6.0](#) [DX1091GN](#) [NL177WL3G](#) [NL276C3G](#) [NL2950BWL3G](#) [NL2950CWL2R](#) [NL589WL2R](#)
[NL67C3G](#) [NL67C3R](#) [2191L1-12V](#) [PB22SIOL0RG](#) [PB22SPPM41R](#) [PB22SPPM61R](#) [LE177C5B](#) [LH1048BSWL3702](#) [LH1048BWL3702](#)
[LH382A](#) [LHM62B](#) [SSI-LXH387USBD-150](#) [SSI-LXH9ZIC40587](#) [SSP-LXS110818BA](#) [FL2950BWL7R](#) [FL2950WL7R](#) [FL2951WL8G](#)
[FL2951WL8R](#) [FL589C7R](#) [FL67C7R](#) [FL67WL8G](#) [2191QU7-24V](#) [2191U1-12V](#) [2191U5-12V](#) [2191U5-6V](#) [2191U7-12V](#) [249-4167-3734-504F](#) [Q6P5BXXG02E](#) [3990A7](#) [5110F3-12V](#) [MPC5BCW18.0](#) [556-1237-801F](#)