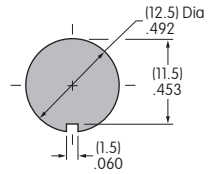
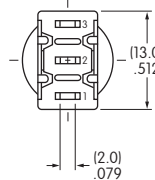
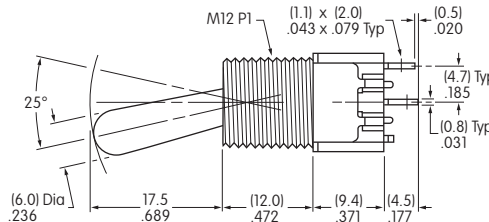
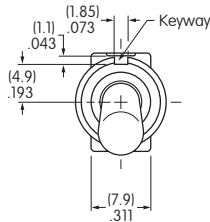


## M2011VA001

Bushing Mount • Single Pole • Solder Lug

Dimensions in mm/inch

PANEL CUTOUT



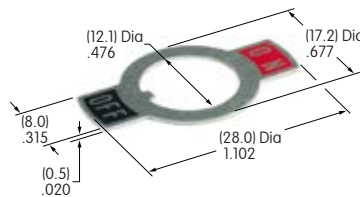
Panel Thickness:  
.216" (5.5mm) Maximum

### BASE SWITCH

### ON-OFF PLATE

#### AT214 ON-OFF Plate

Part Number  
**M2011B2B1W01**



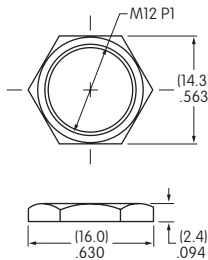
Colors: Red & black ink  
Material: Aluminum

#### Installation Instructions

1. Assemble the AT527M nut onto the switch's bushing.
2. Place the AT508 lockwasher onto the bushing.
3. Insert the switch bushing with hardware from back of the panel into the cutout hole.
4. Place the ON-OFF plate onto the bushing, aligning the plate's notch with the keyway.
5. Assemble the AT503M nut onto the bushing to complete.

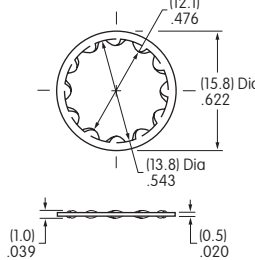
### STANDARD HARDWARE

#### AT503M Hexagon Face Nut



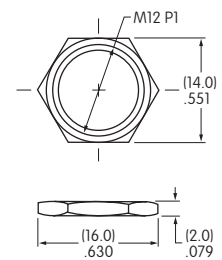
1 included with each switch  
Material: Brass with chrome plating

#### AT508 Internal Tooth Lockwasher



1 included with each switch  
Material: Steel with zinc/chromate

#### AT527M Hexagon Mounting Nut



1 included with each switch  
Material: Steel with nickel plating

### POLE & CIRCUIT

		Toggle Position ( ) = Momentary			Connected Terminals			Throw & Schematics
Pole	Model	Down Keyway	Center	Up	Down Keyway	Center	Up	
SP	M2011	ON	NONE	OFF	2-3	OPEN	OPEN	Note: Terminal numbers are not actually on the switch. 

### CONTACT MATERIALS & RATINGS

Silver over Silver

Power Level

6A @ 125V AC & 3A @ 250V AC

## Base Switch Specifications

**Electrical Capacity (Resistive Load)**

**Power Level:** 6A @ 125V AC & 3A @ 250V AC; 4A @ 30V DC


**Other Ratings**

**Contact Resistance:** 10 milliohms maximum  
**Insulation Resistance:** 1,000 megohms minimum @ 500V DC  
**Dielectric Strength:** 1,000V AC minimum between contacts for 1 minute minimum;  
 1,500V AC minimum between contacts and case for 1 minute minimum  
**Mechanical Life:** 100,000 operations minimum  
**Electrical Life:** 25,000 operations minimum  
 50,000 operations minimum at 3A @ 125V AC  
**Angle of Throw:** 25°

**Materials & Finishes**

**Toggle:** Brass with chrome plating  
**Frame:** Stainless steel  
**Bushing:** Brass with nickel plating  
**Support Bracket:** Brass with tin plating  
**Case:** Diallyl phthalate resin (UL94V-0)  
**Movable Contactor:** Phosphor bronze with silver plating  
**Movable Contacts:** Silver alloy  
**Stationary Contacts:** Silver with silver plating  
**Terminals:** Copper or brass with silver plating

**Environmental Data**

**Operating Temp Range:** -30°C through +85°C (-22°F through +185°F)  
**Humidity:** 90 ~ 95% humidity for 96 hours @ 40°C (104°F)  
**Vibration:** 10 ~ 55Hz with peak-to-peak amplitude of 1.5mm traversing the frequency range & returning in 1 minute; 3 right angled directions for 2 hours  
**Shock:** 50G (490m/s<sup>2</sup>) acceleration (tested in 6 right angled directions, with 5 shocks in each direction)  
**RoHS Compliant:** 

**Installation**

**Mounting Torque:** 3.0Nm (26.55 lb•in)

**Processing**

**Soldering:** Manual Soldering: 350°C for 3 seconds maximum, 1 cycle  
 Note: Lever must be in OFF (center) position while soldering.  
**Cleaning:** These devices are not process sealed. Hand clean locally using alcohol based solution.

**Standards & Certifications**

**Flammability Standards:** UL94V-0 for case

## X-ON Electronics

Largest Supplier of Electrical and Electronic Components

*Click to view similar products for [Toggle Switches](#) category:*

*Click to view products by [NKK Switches](#) manufacturer:*

Other Similar products are found below :

[8928K478](#) [020017-13](#) [60012L](#) [6006L](#) [CS115W](#) [CS120W](#) [637H/25](#) [6663](#) [7101SPDV30BE](#) [7103SDV30BE](#) [7105D](#) [7108P3YAV2BE](#)  
[71YY50282](#) [7300K36](#) [7301K38](#) [7306K36](#) [7310K36](#) [7506K4](#) [7592K6](#) [7660K12](#) [7691K14](#) [7700K1](#) [8391K108](#) [8396K108](#) [8811K17](#)  
[8824K14](#) [8828K13](#) [8835K3](#) [8858K44](#) [PS83-121G](#) [1-1825192-0](#) [A201SCWZB04](#) [A207SYCB04](#) [A208J61ZQ0004](#) [A221T1TCQ](#)  
[A323S1CWZQ](#) [A423S1CWZG-M8](#) [1201W](#) [12156AX408](#) [12147AGKX679](#) [12246X778](#) [12TW49-3D](#) [130312](#) [13037L](#) [13001X](#)  
[AE101MD1W4B04](#) [AE208SD1W4B04](#) [MS24659-22D](#) [MS27407-5](#) [1520230-9](#)