

## TYPICAL INDICATOR ORDERING EXAMPLE



Lamps	
Incandescent	
06	6-volt
12	12-volt
18	18-volt
24	24-volt
28	28-volt
Neon	
N	110-volt

Cap Colors	
B	White
C	Red
D	Orange
E	Yellow
*F	Green
*G	Blue

\*F & G not suitable with neon.

Bezels	
1	.787" (20.0mm) Wide
2	.937" (23.8mm) Wide

Bezel Colors	
A	Black
B	White
C	Red
D	Orange
E	Yellow
F	Green
G	Blue
H	Gray

### DESCRIPTION FOR TYPICAL ORDERING EXAMPLE

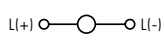


#### P01-12-C-1A



Note: Wire harness & cable assemblies offered only in Americas

## LAMP CODES & SPECIFICATIONS

### Incandescent & Neon Lamps for Solid & Design Caps

AT602 Incandescent	AT602N Neon	$L(+)$  $L(-)$	06	12	18	24	28	N	
		Voltage	6V	12V	18V	24V	28V	110V	
		Current	80mA	50mA	35mA	25mA	22mA	1.5mA	
		MSCP	.159	.215	.398	.215	.247	NA	
		Endurance	2,000 Average					15,000 Avg.	
		Ambient Temperature Range	-10° ~ +50°C						
T- 1 1/2 Pilot Slide Base		Recommended Resistor for Neon: 33K ohms for 110V AC & 100K ohms for 220V AC							

Electrical specifications are determined at a basic temperature of 25°C.  
For dimension drawings of lamps, see Accessories & Hardware Index.

If the source voltage is greater than rated voltage, a ballast resistor is required.  
The ballast resistor calculation and more lamp detail are shown in the Supplement section.

## CAP COLORS

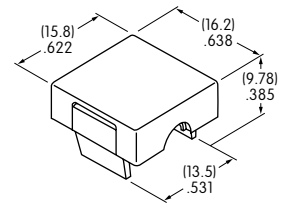
<b>B</b> White	<b>D</b> Orange	<b>F</b> Green
<b>C</b> Red	<b>E</b> Yellow	<b>G</b> Blue

Material: Polycarbonate

Finish: Glossy

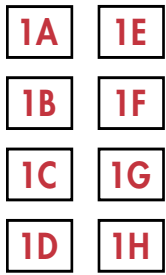
F & G not suitable for neon

#### AT429

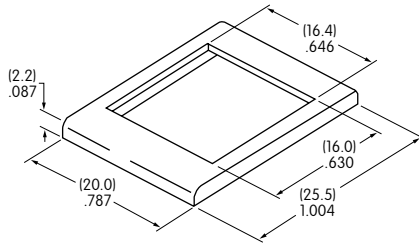


Toggles  
 Rockers  
 Pushbuttons  
 Illuminated PB  
 Programmable  
 Keylocks  
 Rotaries  
 Slides  
 Tactiles  
 Tilt  
 Touch  
 Accessories  
 Supplement

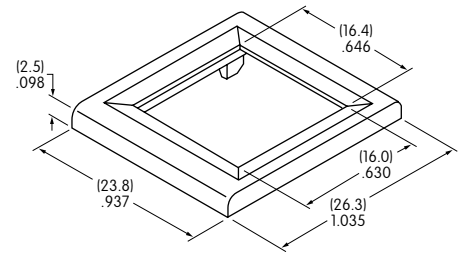
### OPTIONAL BEZELS & COLORS



**AT204**  
**.787" (20.0mm) Wide Bezel**



**AT9201**  
**.937" (23.8mm) Wide Bezel**



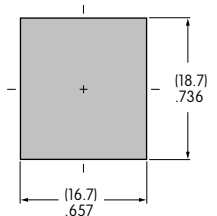
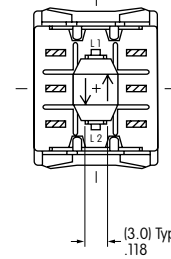
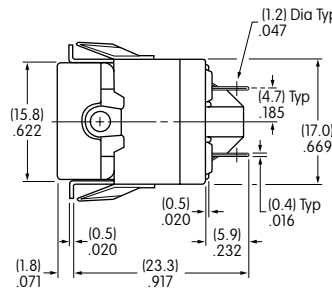
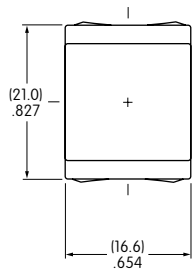
Material: Polycarbonate

Standard Finish: Glossy

**Color Codes:** A Black B White C Red D Orange E Yellow F Green G Blue H Gray

### TYPICAL INDICATOR DIMENSIONS

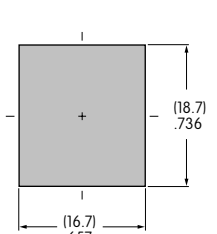
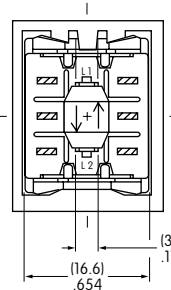
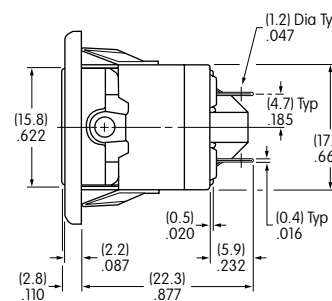
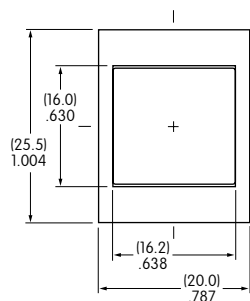
#### Without Bezel



Panel Thickness:  
 .039" ~ .157"  
 (1.0mm ~ 4.0mm)

**P01-12-C**

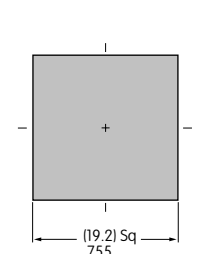
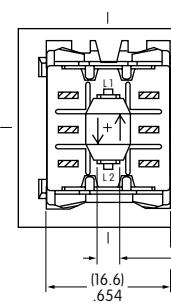
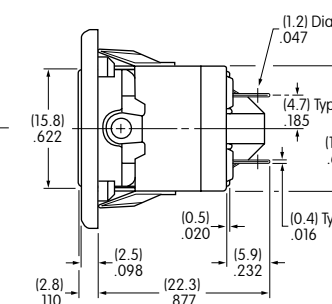
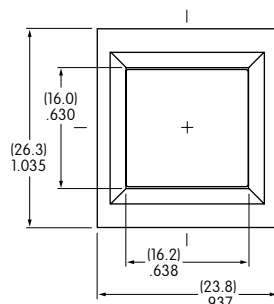
#### With Bezel



Panel Thickness:  
 .039" ~ .157"  
 (1.0mm ~ 4.0mm)

**P01-12-C-1A**

#### With Large Bezel



Panel Thickness:  
 .039" ~ .157"  
 (1.0mm ~ 4.0mm)

**P01-12-C-2A**

## X-ON Electronics

Largest Supplier of Electrical and Electronic Components

*Click to view similar products for [Industrial Panel Mount Indicators / Switch Indicators](#) category:*

*Click to view products by [NKK Switches](#) manufacturer:*

Other Similar products are found below :

[LW1A-P1-GD](#) [LW1A-P1-W](#) [01-931.3](#) [01-152.025](#) [73.362.4028.0](#) [750-1520](#) [9001OA120](#) [A0142N5](#) [A3DT-500Y](#) [AL6M-LK3-R](#) [AL6M-P7P-A](#) [AOLQW-2B0600](#) [AP1M255-A](#) [APD106LN-G](#) [APD106LN-S](#) [APN1126-G](#) [APS122DN-W](#) [ASLWLD-G](#) [ASLWLD-R](#) [ATN2100](#) [AYLW4L-A](#) [18-237.035](#) [18-945](#) [HW1A-L1-GD](#) [HW1A-P2-GL](#) [HW1X-BM411-R](#) [HW2A-L1-GL](#) [HW2A-P1-GD](#) [HWAZ1N-OB](#) [PA2100/2](#) [PA2200/1](#) [PA2SHIELD](#) [PAMR25](#) [LA3P-1C03V-Y](#) [96-923.5](#) [A0244J2](#) [LSPD-120A](#) [LSPD-1Y](#) [LSPD-6A](#) [LSPD-6DA](#) [LSPD-6DW](#) [LSPD-6DY](#) [LSPD-6R](#) [LSPD-6W](#) [18-946](#) [AL6H-LK3-A](#) [AL6H-P4-JW](#) [AL6M-LK1-MG](#) [AP8M155-G](#) [APD106LN-W](#)