

GENERAL SPECIFICATIONS

Electrical Capacity

Resistive Load: 15A & ½ HP @ 125 or 250V AC for high capacity models
Lamp Load: 5A @ 125V AC

Other Ratings

Contact Resistance: 15 milliohms maximum
Insulation Resistance: 100 megohms minimum @ 500V DC
Dielectric Strength: 1,000V AC minimum between contacts for 1 minute minimum;
 1,500V AC minimum between contacts & case for 1 minute minimum
Mechanical Life: 1,000,000 operations minimum
Electrical Life: 50,000 operations minimum
Travel: Pretravel .047" (1.19mm); Overtravel .040" (1.01mm); Differential .011" (0.27mm)
Operating Temp Range: -40°C through +85°C (-40°F through +185°F)

Materials & Finishes

Caps & Shrouds: Polycarbonate with glossy finish or PBT
Plunger: Polyacetal or brass with nickel plating
Bushing: Steel with zinc plating or glass fiber reinforced polyamide
Case: Polyester
Movable & Stationary Contacts: Silver alloy
Terminals: Brass with silver plating

Standards & Certifications

UL: Internal snap switch is UL recognized.
CSA: Internal snap switch is CSA certified.

TYPICAL SWITCH ORDERING EXAMPLE

SCB

2

5

P

15

A

—

4

CA

Poles	
1	SPDT
2	DPDT

Circuits		
5	ON	(ON)
6	ON	ON
() = Momentary		

Bushings	
P	Plastic (with momentary only)
S	Steel

Rating	
15	15A

Terminals	
A	.187" (4.75mm) Quick Connect
* B	.250" (6.35mm) Quick Connect
Note: Contact factory for availability of screw lug and solder lug models.	
* Available in Americas only	

Caps & Shrouds	
For Momentary	
3	.520" (13.2mm) Diameter Cap
For Momentary & Alternate Action	
4	Round Cap & Shroud (AT454 & AT455)
5	Rectangular Cap & Shroud (AT452 & AT453)

DESCRIPTION FOR TYPICAL ORDERING EXAMPLE

SCB25P15A-4CA

Colors		
	Caps	Shrouds
A	Black	A
B	White	B
C	Red	—
F	Green	—
G	Blue	—
H	Gray	H

Note: Standard hardware is provided with caps. See Bushing detail for more information.

Toggles
 Rockers
 Pushbuttons
 Illuminated PB
 Programmable
 Keylocks
 Rotaries
 Slides
 Tactiles
 Tilt
 Touch
 Indicators
 Accessories
 Supplement

Toggles

Rockers

Pushbuttons

Programmable Illuminated PB

Keylocks

Rotaries

Slides

Tactiles

Tilt





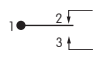
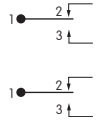
Touch

Indicators

Accessories

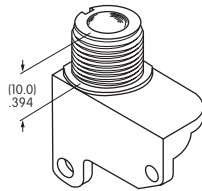
Supplement

POLES & CIRCUITS

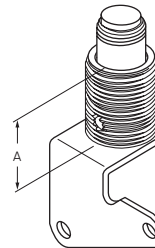
		Plunger Position () = Momentary		Connected Terminals		Throw & Schematics
Pole	Model	Normal  Keyway	Down 	Normal  Keyway	Down 	Note: Terminal numbers are actually on the switch.
SP	SCB15 SCB16	ON ON	(ON) ON	1-2	1-3	SPDT 
DP	SCB25 SCB26	ON ON	(ON) ON	1-2 1-2	1-3 1-3	SP with 2 switches 

BUSHINGS

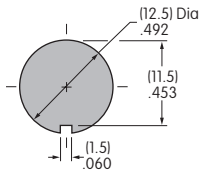
P Plastic
(for Momentary only)



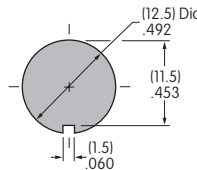
S Steel



"A" =
11.2mm
Momentary
15.5mm
Alternate Action



Maximum Effective Panel Thickness:
.165" (4.2mm) without Shroud
.157" (4.0mm) with Shroud



Maximum Effective Panel Thickness:
Momentary: .177" (4.5mm) without Shroud
.157" (4.0mm) with Shroud
Alternate Action: .354" (9.0mm)

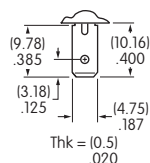
Standard Hardware Provided with Caps

Cap Option 3: AT504M Knurled Face Nut, AT508 Lockwasher, AT527M Hex Mounting Nut

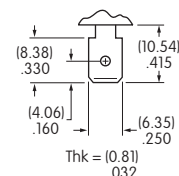
Cap Options 4 & 5: AT508 Lockwasher & AT527M Hex Mounting Nut

TERMINALS

A .187" (4.75mm)
Quick Connect

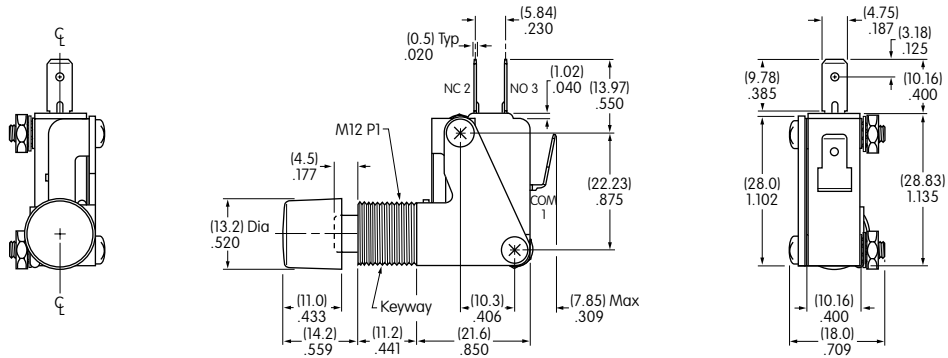


B .250" (6.35mm)
Quick Connect



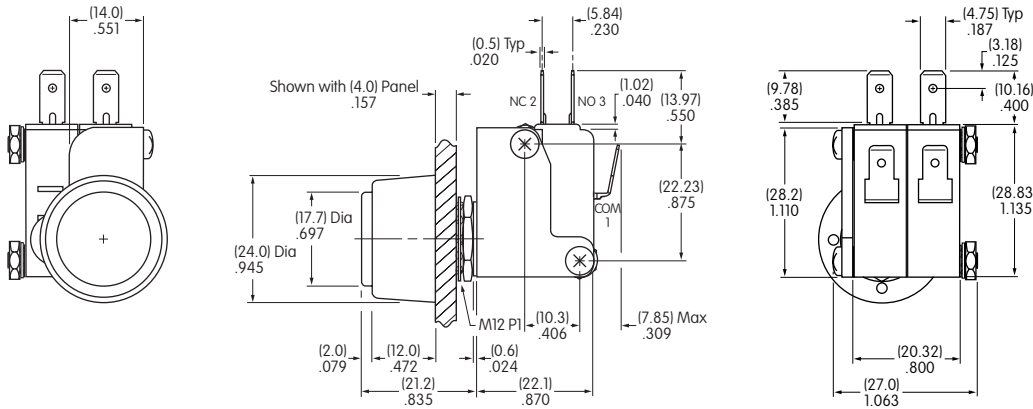
TYPICAL SWITCH DIMENSIONS

.520" (13.2mm) Dia. Cap • .187" (4.75mm) Quick Connect



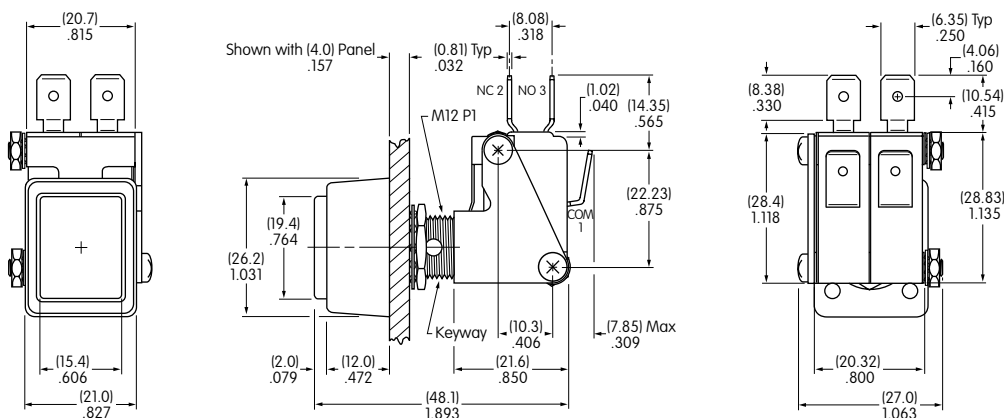
SCB15S15A-3C

Round Cap & Shroud • .187" (4.75mm) Quick Connect



SCB25P15A-4CA

Rectangular Cap & Shroud • .250" (6.35mm) Quick Connect



SCB26S15B-5CA

X-ON Electronics

Largest Supplier of Electrical and Electronic Components

Click to view similar products for [Pushbutton Switches](#) category:

Click to view products by [NKK Switches](#) manufacturer:

Other Similar products are found below :

[8940K2012](#) [LW1L-M1C10V-A](#) [LW1L-M1C70-A](#) [LW2L-A1C20M-GD](#) [LW2L-M1C20M-A](#) [60324L](#) [M22-D-R-GB0/K11](#) [M7E-HRN2](#)
[67021K512](#) [67081K512X](#) [701PB580](#) [7190K101](#) [7199K101](#) [810K12910](#) [810KSV30B](#) [MML21EA2ADK](#) [MML21KA3ABK](#)
[MML23KA3AC05K-001](#) [MML23KW3AA01W](#) [8418K2](#) [8442K3](#) [8450K1](#) [860K11911T01A](#) [861901](#) [861K11911T01A07](#)
[861K13810T00A14](#) [861K13911](#) [8646AB6X718UL](#) [8646ABUL](#) [9001KXRK](#) [907AYY100](#) [PMHD155A1](#) [9533CD4+U574+U4922](#) [95-](#)
[414.000](#) [99-450.837](#) [99-453.837](#) [PV3H2B0NN-341](#) [1203MRA](#) [A22NZBGANGA](#) [A22NZBMMNGA](#) [A22NZBNANGA](#) [A22NZMPATRA](#)
[A2PMA1X03EC56](#) [A3A-5123-02](#) [A3A-7140](#) [A3A-7310](#) [A3A-7340](#) [A3U-TMW-A2C-5M](#) [A595](#) [12037A2ULCSA](#)