

General Specifications

Part Number: SK14DGMG01

Electrical Capacity (Resistive Load)

Logic Level: 0.4VA maximum @ 28V AC/DC maximum
(Applicable Range 0.1mA ~ 0.1A @ 20mV ~ 28V)

Other Ratings

Contact Resistance: 100 milliohms maximum
Insulation Resistance: 100 megohms minimum @ 500V DC
Dielectric Strength: 500V AC minimum between contacts for 1 minute minimum
Mechanical Life: 30,000 operations minimum
Electrical Life: 10,000 operations minimum
Static Capability: Withstands 15 kilovolts ESD
Nominal Operating Force: 0.02Nm (0.18 lb•in)
Contact Timing: Break-before-make
Angle of Throw: 45°

Materials & Finishes

Key: Brass alloy with bright nickel plating and ABS resin handle
Housing: Polyamide
Base: Glass fiber reinforced polyamide
Rotor: Glass fiber reinforced polyamide
Tumbler Plate: Brass
Movable Contacts: Beryllium copper with gold plating
Stationary Contacts: Brass with gold plating
Switch Terminals: Brass with gold plating

Environmental Data

Operating Temperature Range: -40°C through +85°C (-40°F through +185°F)
Humidity: 90 ~ 95% humidity for 240 hours @ 60°C (140°F)
Vibration: 10 ~ 55Hz with peak-to-peak amplitude of 1.5mm traversing the frequency range & returning in 1 minute; 3 right angled directions for 2 hours
Shock: 50G (490m/s²) acceleration (tested in 6 right angled directions, with 5 shocks in each direction)

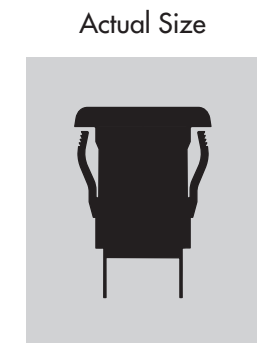
PCB Processing

Soldering: Manual Soldering: lead-free, see profile below. Do not exceed these specifications.
Cleaning: Hand clean locally using alcohol based solution.

Solder Iron Tip Temperature 370°C
 Time on Terminal 4 seconds
 Cycles 2

Standards & Certifications

These devices have not been tested for UL recognition or CSA certification.
 These devices are designed for use in a low-voltage, low-current, logic-level circuit.
 When used as intended in a logic-level circuit, the results do not produce hazardous energy.



- Toggle
- Rockers
- Pushbuttons
- Illuminated PB
- Programmable
- F** Keylocks
- Rotaries
- Slides
- Tactiles
- Tilt
- Touch
- Indicators
- Accessories
- Supplement

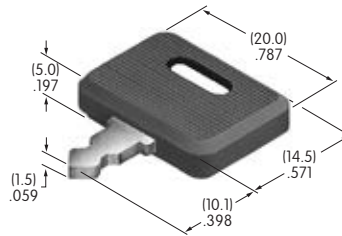
POLES, CIRCUITS & KEY-REMOVABLE POSITIONS

Pole & Throw	Key Positions			Connected Terminals (Terminal numbers are on switch)			Schematic	⊙ = Key Removable √ = Maximum Arc
	Pos 1	Pos 2	Pos 3	Pos 1	Pos 2	Pos 3		
SP3T	ON	ON	ON	C-1	C-2	C-3		

KEY

AT4080 Standard Antistatic Plastic Handle

Material:
Brass Alloy with Bright Nickel Plating
& ABS Resin Handle



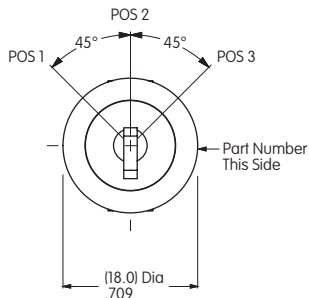
2 keys supplied with each switch

TYPICAL SWITCH DIMENSIONS

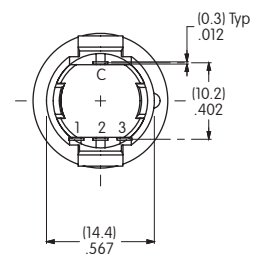
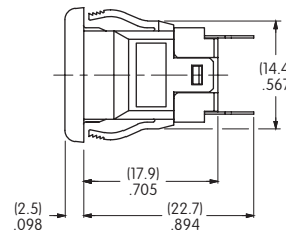
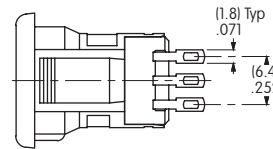
Antistatic Snap-in • Flat Key



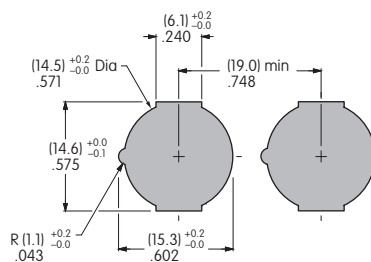
SK14DGMG01



Single Pole Three Throw



PANEL CUTOUT



Panel Thickness Range
.039" ~ .079"
(1.0mm ~ 2.0mm)

X-ON Electronics

Largest Supplier of Electrical and Electronic Components

Click to view similar products for [Keylock Switches](#) category:

Click to view products by [NKK Switches](#) manufacturer:

Other Similar products are found below :

[89496-09](#) [58J1007](#) [58J8A45-01B05N](#) [719-0201-000](#) [719-0202-000](#) [719-0702-000](#) [719-5504-000](#) [84800-04](#) [GKNC33L](#) [GKNC3L](#)
[PVA2OAH5](#) [HA1K-2C2VA-2](#) [14-136.025K](#) [14-235.022K](#) [AS6H-2K2A](#) [AS6M-2K1B](#) [AS6Q-2K2A](#) [AS6Q-3K2A](#) [1571487-1](#) [KEY-AS6](#)
[KH3C-20C](#) [8928K493](#) [2SWK131AL102](#) [AS6M-2K1A](#) [AS6Q-2K1PB](#) [51-401.036D](#) [51-401.036K](#) [51-414.036D](#) [HW1K-31BF20](#) [HW1K-](#)
[3HF20](#) [Y1112-2027CLFT](#) [51-155.025D](#) [51-404.036D](#) [51-405.036D](#) [1-1437597-8](#) [58J8A36-01B04N](#) [58M1422](#) [86945-05](#) [719-0204-000](#)
[719-0205-000](#) [719-0801-000](#) [719-0804-000](#) [719-0805-000](#) [88422-18](#) [58J8A90-01C02N](#) [58J9P36-01B09N](#) [58J8A36-01C03N](#) [GKRA3K1A2-](#)
[F03-C](#) [GKBB14L6](#) [14-236.025K1020](#)