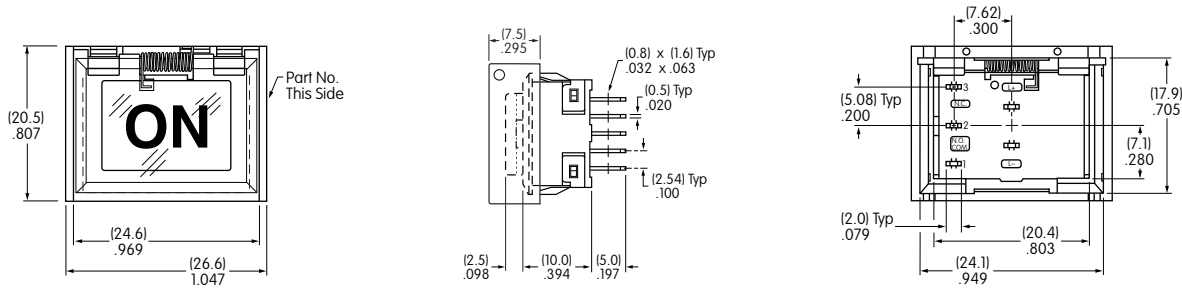


## UB16VA001

Rectangular • Green LED • Snap-in Mount • Solder Lug

Dimensions in mm/inch



BASE SWITCH	FULL FACE ILLUMINATED CAP		LEGEND SPECIFICATIONS
	AT4117 Lens	AT4118 Diffuser	<b>Legend</b> ON
	Color: Clear	Color: White	<b>Type Style</b> Helvetica Bold
<b>Part Number</b> UB16NKW015F-JB			<b>Type Size</b> 22 Point
	Material: Polycarbonate	Lens Finish: Glossy	<b>Legend Color</b> Black
		Diffuser Finish: Textured	<b>Print Method</b> Laser Etch on Inside of Lens
			Legend shown is illustrative only. Actual art may vary.

POLES & CIRCUITS						
Pole	Model	Plunger Position ( ) = Momentary		Connected Terminals		Throw & Switch/Lamp Schematics
		Normal	Down	Normal	Down	
SP	*UB16	ON	ON	1-3	1-2	Notes: Switch is marked with NC, NO, COM, L+ & L-. Lamp circuit is isolated and requires an external power source. SPDT

\* When in latched position for the alternate circuit, cap position is .039" (1.0mm) above the housing.

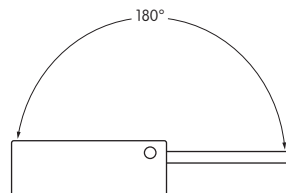
### Spring Loaded Protective Guard

AT4172  
Rectangular  
Protective Guard

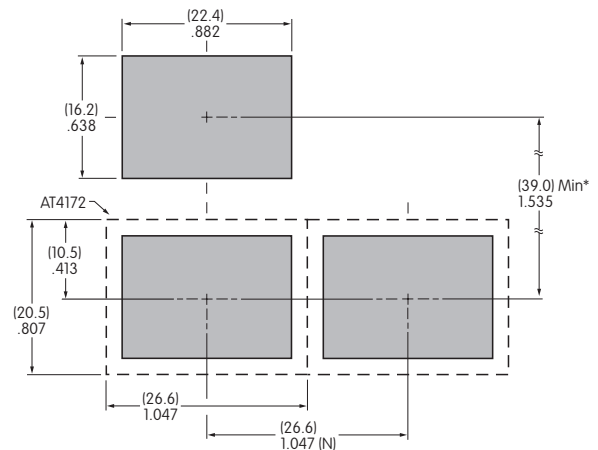


Opens 180°  
Closes automatically

**Materials:**  
Cover: Clear Polycarbonate  
Base: Black GFR Polyamide  
Coil Spring: Stainless Steel



Recommended Panel Thickness:  
.039" ~ .106" (1.0mm ~ 2.7mm)

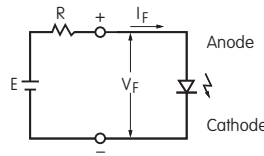


(N) = Number of switches \* Minimum dimension allows opening of cover to 180°

## ELECTRICAL SPECIFICATIONS FOR LED

Color	Green	
Maximum Forward Current	$I_{FM}$	25mA
Typical Forward Current	$I_F$	20mA
Forward Voltage	$V_F$	2.1V
Maximum Reverse Voltage	$V_{RM}$	5V
Current Reduction Rate Above 25°C	$\Delta I_F$	0.46mA/°C
Ambient Temperature Range		-25°C ~ +50°C

The electrical specifications shown are determined at a basic temperature of 25°C. If the source voltage exceeds the rated voltage, a ballast resistor is required. The following diagram and formula will assist in calculating the value of the ballast resistor.



$$R = \frac{E - V_F}{I_F}$$

Where: R = Resistor Value (Ohms)  
 E = Source Voltage (V)  
 $V_F$  = Forward Voltage (V)  
 $I_F$  = Forward Current (A)

## Base Switch Specifications

### Electrical Capacity (Resistive Load)

**Power Level:** 5A @ 125/250V AC or 5A @ 30V DC


#### Other Ratings

- Contact Resistance:** 50 milliohms maximum
- Insulation Resistance:** 200 megohms minimum @ 500V DC
- Dielectric Strength:** 1,000V AC minimum between contacts for 1 minute minimum;  
1,500V AC minimum between contacts & case for 1 minute minimum
- Mechanical Life:** 200,000 operations minimum
- Electrical Life:** 10,000 operations minimum; 100,000 operations minimum with resistive load of 3A @ 125V AC
- Nominal Operating Force:** 1.9N
- Contact Timing:** Break before make
- Travel:** Pretravel .067" (1.7mm); Overtravel .024" (0.6mm); Total Travel .091" (2.3mm)

### Materials & Finishes

- Housing/Bezel:** Glass fiber reinforced polyamide (UL94V-0)
- Snap-in Frame:** Stainless steel
- Movable Contact:** Phosphor bronze
- Movable Contacts:** Silver alloy or copper with gold plating
- Stationary Contacts:** Silver alloy or copper with gold plating
- Switch Terminals:** Phosphor bronze with silver or gold plating
- Lamp Terminals:** Brass with silver plating
- Base:** Glass fiber reinforced liquid crystal polymer (UL94V-0)

### Environmental Data

- Operating Temperature Range:** -25°C through +50°C (-13°F through +122°F)
- Humidity:** 90 ~ 95% humidity for 96 hours @ 40°C (104°F)
- Vibration:** 10 ~ 55Hz with peak-to-peak amplitude of 1.5mm traversing the frequency range & returning in 1 minute; 3 right angled directions for 2 hours
- Shock:** 50G (490m/s<sup>2</sup>) acceleration (tested in 6 right angled directions, with 5 shocks in each direction)
- RoHS Compliant:** 

### Installation

- Cap Installation Force:** 7.55N (1.70 lbf) maximum downward force on cap
- Soldering Time & Temp:** Manual Soldering: 390°C for 4 seconds, 2 cycles
- Cleaning:** These devices are not process sealed. Hand clean locally using alcohol based solution.

### Standards & Certifications

- Flammability Standards:** UL94V-0 housing/bezel & base

## X-ON Electronics

Largest Supplier of Electrical and Electronic Components

*Click to view similar products for [Pushbutton Switches](#) category:*

*Click to view products by [NKK Switches](#) manufacturer:*

Other Similar products are found below :

[8940K2012](#) [LW1L-M1C10V-A](#) [LW1L-M1C70-A](#) [LW2L-A1C20M-GD](#) [LW2L-M1C20M-A](#) [60324L](#) [M22-D-R-GB0/K11](#) [M7E-HRN2](#)  
[67021K512](#) [67081K512X](#) [701PB580](#) [7199K101](#) [810K12910](#) [810KSV30B](#) [MML21EA2ADK](#) [MML21KA3ABK](#) [MML23KA3AC05K-001](#)  
[MML23KW3AA01W](#) [8418K2](#) [8442K3](#) [8450K1](#) [860K11911T01A](#) [861901](#) [861K11911T01A07](#) [861K13810T00A14](#) [861K13911](#)  
[8646AB6X718UL](#) [8646ABUL](#) [9001KXRK](#) [907AYY100](#) [PMHD155A1](#) [9533CD4+U574+U4922](#) [95-414.000](#) [99-450.837](#) [99-453.837](#)  
[PV3H2B0NN-341](#) [1203MRA](#) [A22NZBGANGA](#) [A22NZBMMNGA](#) [A22NZBNANGA](#) [A22NZMPATRA](#) [A2PMA1X03EC56](#) [A3A-5123-02](#)  
[A3A-7140](#) [A3A-7310](#) [A3A-7340](#) [A3U-TMW-A2C-5M](#) [A595](#) [12037A2ULCSA](#) [ABD122N-B](#)