

# IP65 Panel Seal Indicator with Legend

# YB Indicator

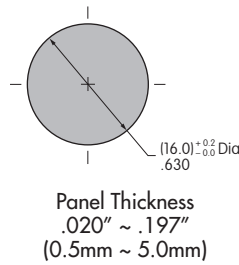
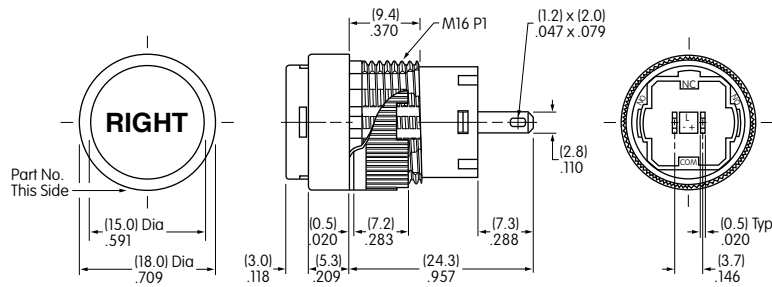
## YB02VA003

Bushing Mounting • Splashproof

Dimensions in mm/inch

### PANEL CUTOUT

### LEGEND SPECIFICATIONS



<b>Legend</b>	<b>RIGHT</b>
<b>Type Style</b>	Helvetica Bold
<b>Type Size</b>	10 Point
<b>Legend Color</b>	Black
<b>Print Method</b>	Laser Etch on Inside of Lens

Legend shown is illustrative only. Actual art may vary.

### BASE INDICATOR

### ROUND CAP

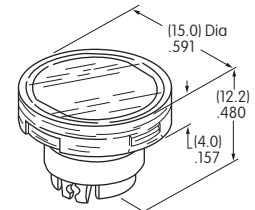
**AT3005JB**  
Round Cap

Part Number

**YB02WKW01**

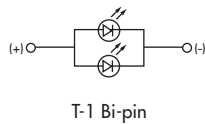
Clear Lens  
White Insert

Materials: Polycarbonate (Lens & Insert)  
Thermoplastic Elastomer (Seal/Diffuser)  
Finish: Glossy



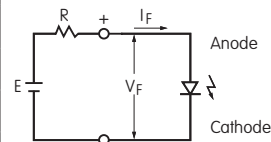
### ELECTRICAL SPECIFICATIONS FOR LED

**Bright LED**  
**AT628C**



LED does not come with a resistor		
Color	Red	
Maximum Forward Current	$I_{FM}$	40mA
Typical Forward Current	$I_F$	26mA
Forward Voltage	$V_F$	1.9V
Maximum Reverse Voltage	$V_{RM}$	4V
Current Reduction Rate Above 25°C	$\Delta I_F$	0.50mA/°C
Ambient Temperature Range		-25°C ~ +50°C

The electrical specifications shown are determined at a basic temperature of 25°C. If the source voltage exceeds the rated voltage, a ballast resistor is required. The following diagram and formula will assist in calculating the value of the ballast resistor.



$$R = \frac{E - V_F}{I_F}$$

Where: R = Resistor Value (Ohms)  
E = Source Voltage (V)  
 $V_F$  = Forward Voltage (V)  
 $I_F$  = Forward Current (A)

## Base Indicator Specifications

### Materials & Finishes

<b>Housing/Bezel:</b>	Glass fiber reinforced polyamide (UL94V-0)
<b>Base:</b>	Glass fiber reinforced polyamide (UL94V-0)
<b>Lamp Terminals:</b>	Phosphor bronze with tin plating

### Environmental Data

<b>Operating Temperature Range:</b>	-25°C through +50°C (-13°F through +122°F)
<b>Humidity:</b>	90 ~ 95% humidity for 96 hours @ 40°C (104°F)
<b>Vibration:</b>	10 ~ 55Hz with peak-to-peak amplitude of 1.5mm traversing the frequency range & returning in 1 minute; 3 right angled directions for 2 hours
<b>Shock:</b>	50G (490m/s <sup>2</sup> ) acceleration (tested in 6 right angled directions, with 5 shocks in each direction)
<b>Sealing:</b>	IP65 of IEC60529 standard for panel seal models

RoHS Compliant:



### Installation

<b>Mounting Torque:</b>	0.785Nm (6.95 lb•in) maximum
<b>Quick Connect Force:</b>	24.5N maximum downward force on connector
<b>Soldering Time &amp; Temperature:</b>	Manual Soldering: 390°C for 4 seconds, 2 cycles

### Standards & Certifications

<b>Flammability Standards:</b>	UL94-0 housing & base
--------------------------------	-----------------------

## X-ON Electronics

Largest Supplier of Electrical and Electronic Components

*Click to view similar products for [Industrial Panel Mount Indicators / Switch Indicators](#) category:*

*Click to view products by [NKK Switches](#) manufacturer:*

Other Similar products are found below :

[LW1A-P1-W](#) [LW1B-A0L](#) [01-152.025](#) [D38999/20FJ29PB L/C](#) [704-6020](#) [704-6026](#) [73.362.4028.0](#) [EUS-704.000.7](#) [750-1520](#) [9001OA120](#)  
[99-450.837](#) [99-455.837](#) [99-486.837](#) [99-901.9](#) [99-902.9](#) [99-908.0](#) [99-909.4](#) [99-909.5](#) [A0244J1](#) [A3DT-500Y](#) [AL6M-P7P-A](#) [AOLQW-2B0600](#)  
[AP1M255-A](#) [APD106LN-A](#) [APD106LN-G](#) [APN1126-G](#) [APS122DN-W](#) [ATN2100](#) [AYLW4L-A](#) [18-237.035](#) [C0180AANA](#) [HW1A-L1-](#)  
[GD](#) [HW1A-P2-GL](#) [HW1F-3G](#) [HW1R-2DF20-R](#) [HW1X-BM411-R](#) [HW2A-L1-GL](#) [HW2A-P1-GD](#) [HW4S-31L](#) [HWAZ1N-OB](#) [PA2200/1](#)  
[PA2SHIELD](#) [21-931.2](#) [96-923.5](#) [1625006](#) [99-451.837](#) [99-480.837](#) [99-481.837](#) [99-908.9](#) [99-909.2](#)