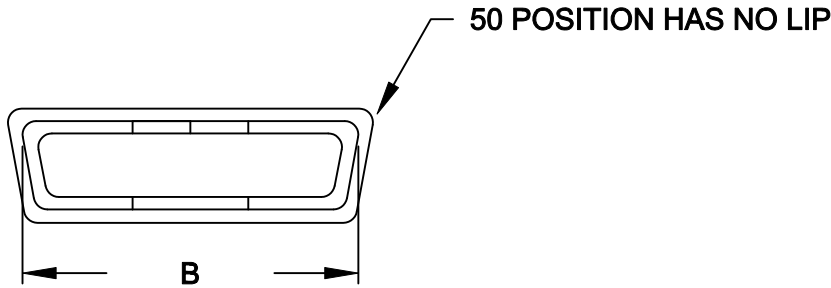
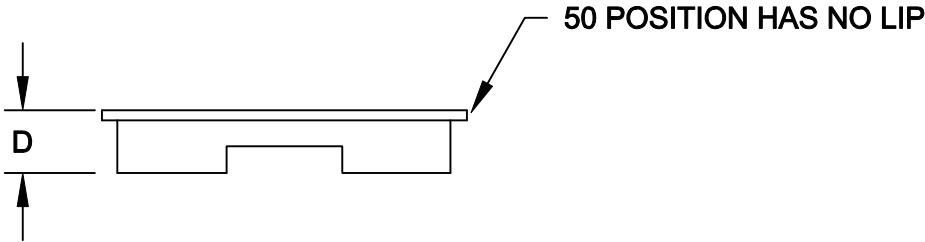
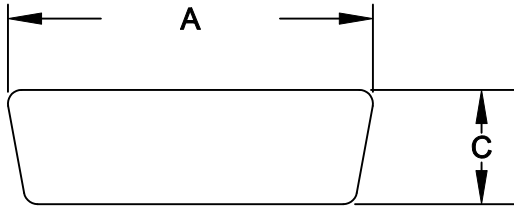


DESCRIPTION: DUST COVER MALE

DIMENSIONS

	A	B	C	D
9	.963	.843	.580	.262
	24.45	21.40	14.72	6.65
15	1.293	1.19	.580	.262
	32.85	30.19	14.72	6.65
25	1.822	1.71	.580	.262
	46.28	43.44	14.72	6.65
37	2.480	2.367	.591	.276
	63.00	60.1	15.00	7.00
50	2.264	2.264	.559	.319
	57.51	57.51	14.19	8.10



PART NUMBER

09	160-000-109R000
15	160-000-115R000
25	160-000-125R000
37	160-000-137R000
50	160-000-150R000

MATERIAL:
 PLASTIC: PE, UL94HB
 RoHS COMPLIANT

	THESE DRAWINGS AND SPECIFICATIONS ARE THE PROPERTY OF NorComp AND SHALL NOT BE REPRODUCED, COPIED OR USED AS THE BASIS FOR THE MANUFACTURE OF SALE OF APPARATUS WITHOUT WRITTEN PERMISSION.		DRAWN: PAM JENKINS	DATE: 12-05-05
	<h1>NorComp</h1>			CHECKED:
SCALE:				SHEET 1 OF 1
			DWG NO. 160-000-1YYR000	

X-ON Electronics

Largest Supplier of Electrical and Electronic Components

Click to view similar products for [D-Sub Tools & Hardware](#) category:

Click to view products by [NorComp](#) manufacturer:

Other Similar products are found below :

[000-01-09-132](#) [000-01-21-132](#) [000-01-31-162](#) [572019-00105-70](#) [000-01-37-162](#) [621-250-113-115](#) [D110550-2](#) [D20418-137](#) [780-518-50SG6-WS](#) [86552009](#) [86553115TLF](#) [86553117TLF](#) [1230032-1](#) [1-5021101-2](#) [15-000050](#) [1589283-4](#) [160-000-005R031](#) [16-000230](#) [160-025-004R031](#) [160-020-209R000](#) [160X10909X](#) [164C03939A](#) [177-505-A-2-2](#) [1-966830-8](#) [21018-6](#) [2-1393560-9](#) [JS-1000](#) [L17D204182M3E](#) [L17D53018](#) [300X10779X](#) [160X10189X](#) [160X10419X](#) [162-000-050R000](#) [21018-5](#) [212561-3](#) [248C21550X](#) [CF15P](#) [QLOCKPOST-2](#) [D110277](#) [500-008NF1K-01](#) [500-008NF3R3KS-01](#) [500-017M09FN](#) [500-017M15MHN](#) [500-024M1](#) [500-068M3](#) [5-1393561-5](#) [C115373-0001](#) [C115373-0002](#) [3342-4-KIT](#) [K1003](#)