

DESCRIPTION: MALE - DIP SOLDER / MACHINED - PREMIUM

| DIMENSIONS(mm) | | | | | | | |
|----------------|-------------------|-------------------|-------------------|-------------------|-------------------|-------------------|-------------------|
| SIZE | A ^{±.36} | B ^{±.10} | C ^{±.15} | D ^{±.15} | E ^{±.38} | F ^{±.25} | G ^{±.25} |
| 9 | 30.80 | 24.99 | 17.00 | 8.40 | 19.20 | 12.60 | 10.90 |
| 15 | 39.15 | 33.32 | 25.30 | 8.40 | 27.70 | 12.60 | 10.90 |
| 25 | 53.04 | 47.04 | 39.00 | 8.40 | 41.10 | 12.60 | 10.90 |
| 37 | 69.32 | 63.50 | 55.40 | 8.40 | 57.30 | 12.60 | 10.90 |
| 50 | 66.93 | 61.11 | 52.80 | 11.10 | 55.10 | 15.20 | 13.60 |

MATERIAL:

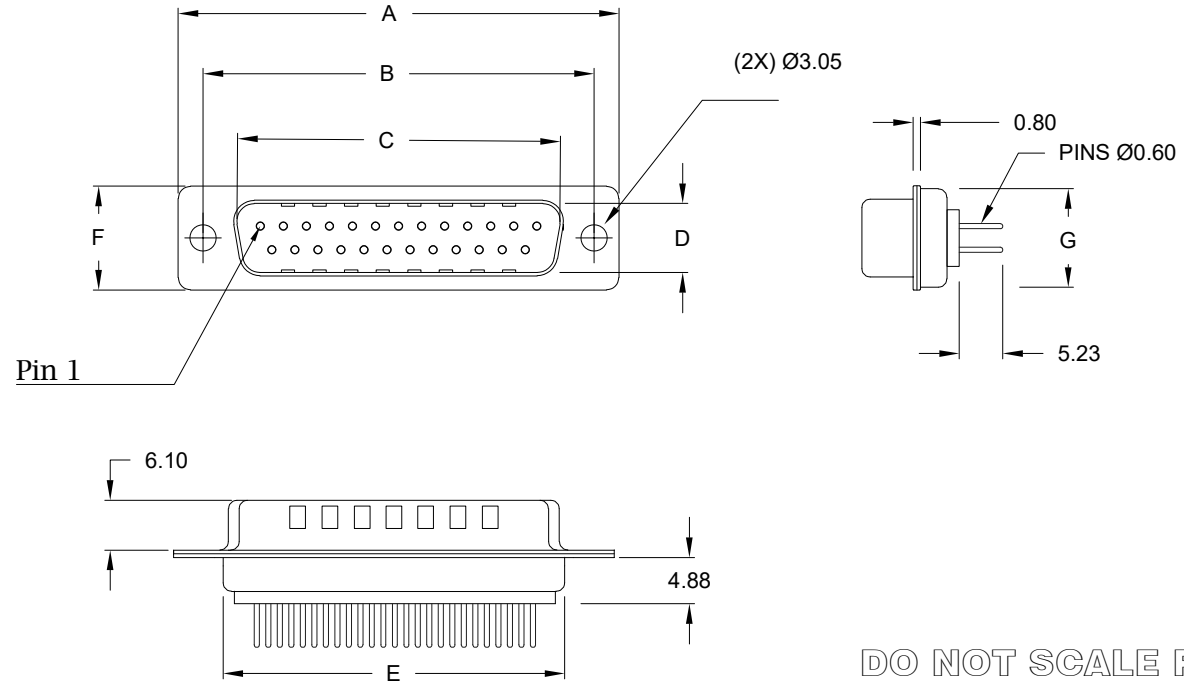
SHELL: STEEL, NICKEL PLATED
 INSULATOR: PA6T, UL94 V-0
 PROCESS TEMP.: 260°C
 CONTACT: BRASS (FLOATING CONTACTS)

ELECTRICAL:

CURRENT RATING: 5 AMPS
 CONTACT RESISTANCE: 15 mOhms Max.
 INSULATION RESISTANCE: 1,000 MOhms Min.
 VOLTAGE: 500VAC FOR 1 MINUTE
 TEMPERATURE: -50° C TO 100° C



172-YYY-113RYY1

SERIES _____
 POSITIONS _____
 009
 015
 025
 037
 050
 GENDER _____
 1 = MALE
 TERMINATION _____
 1 = DIP SOLDER
 SHELL PLATING _____
 3 = NICKEL (GROUND INDENTS)
 HARDWARE OPTIONS _____
 00 = NO HARDWARE
 01 = .065" NUT (PCB SIDE)
 02 = .250" NUT (PCB SIDE)
 03 = .250" NUT (MATING SIDE)
 05 = .237" 4-40 BOARD LOCK
 90 = .237" 4-40 BOARD LOCK
 FOR 0.093" BOARD MAX.
 91 = .237" 4-40 SPACER/ BOARD LOCK
 92 = .237" 4-40 SPACER/ BOARD LOCK
 FOR 0.093" BOARD MAX.
 PLATING OPTIONS _____
 1 = GOLD FLASH
 2 = 30MICRO-INCH GOLD



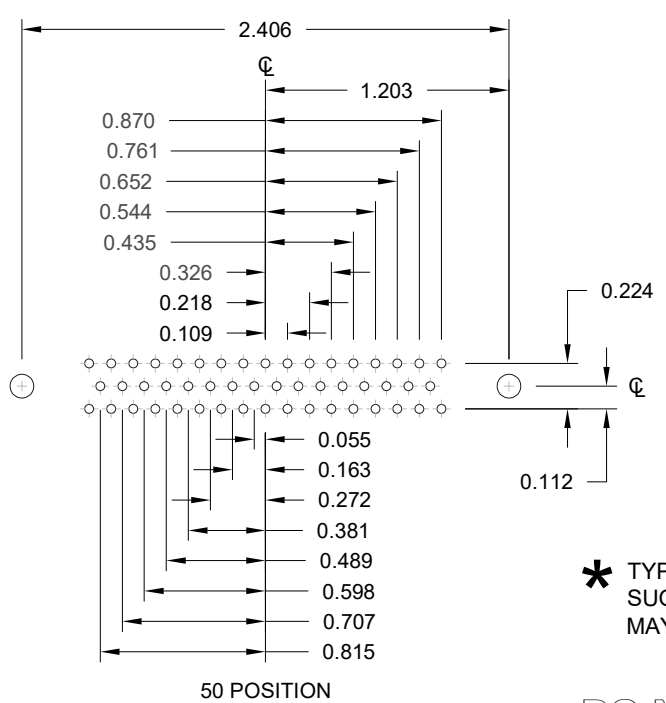
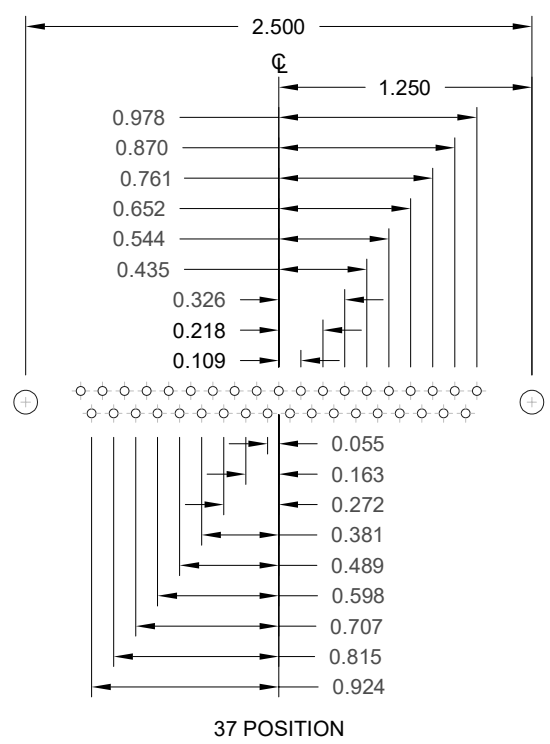
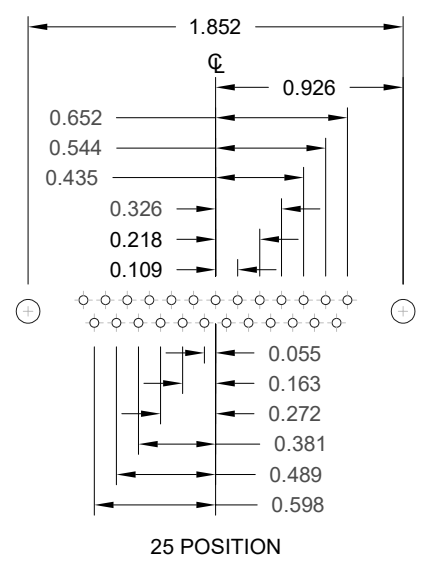
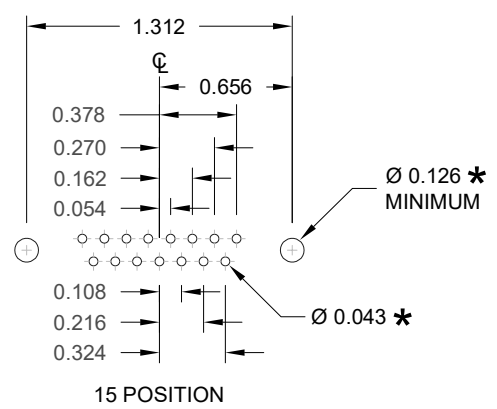
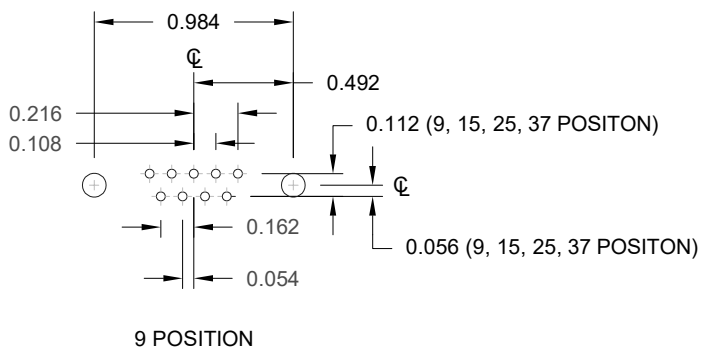
DO NOT SCALE FROM DRAWING

UNITS = mm

| | | | | |
|--|---|--|------------------------------|-------------------|
|  | THESE DRAWINGS AND SPECIFICATIONS ARE THE PROPERTY OF NorComp AND SHALL NOT BE REPRODUCED, COPIED OR USED AS THE BASIS FOR THE MANUFACTURE OF SALE OF APPARATUS WITHOUT WRITTEN PERMISSION. | | DRAWN: PAM JENKINS | DATE: 09-12-05 |
| |  | | SCALE: NTS | SHEET OF 1 3 |
| DWG NO. 172-YYY-113RYY1 | | | | |


RoHS COMPLIANT

DESCRIPTION: PCB LAYOUT - STANDARD DSUB



UNITS = inch
 * TYP. SUGGESTED SIZE MAY NOT BE SUITABLE FOR ALL APPLICATIONS

DO NOT SCALE FROM DRAWING

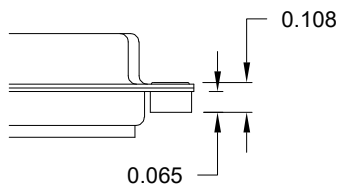
| | | | | |
|--|---|--|------------------------------|--------------------------|
|  | THESE DRAWINGS AND SPECIFICATIONS ARE THE PROPERTY OF NorComp AND SHALL NOT BE REPRODUCED, COPIED OR USED AS THE BASIS FOR THE MANUFACTURE OF SALE OF APPARATUS WITHOUT WRITTEN PERMISSION. | | DRAWN: PAM JENKINS | DATE: 09-12-05 |
| | <h1>NorComp</h1> | | SCALE: NTS | SHEET OF 2 3 |
| DWG NO. 172-YYY-113RYY1 | | | | |

TOLERANCE:
 ALL DIMENSIONS ARE ± 0.010
 UNLESS OTHERWISE
 SPECIFIED

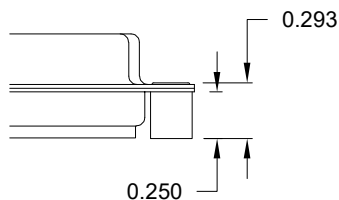
ALL CLINCH-NUTS ARE 4-40 INTERNAL THREADS

****NOTE: 90 & 92 OPTION FOR 0.093" MAX. BOARD THICKNESS**

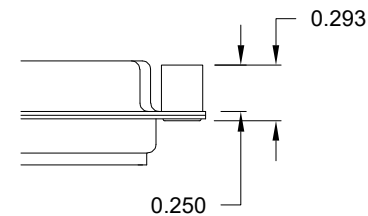
"01" // PCB SIDE



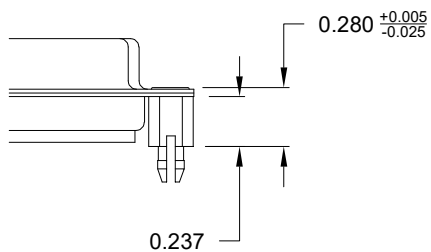
"02" // PCB SIDE



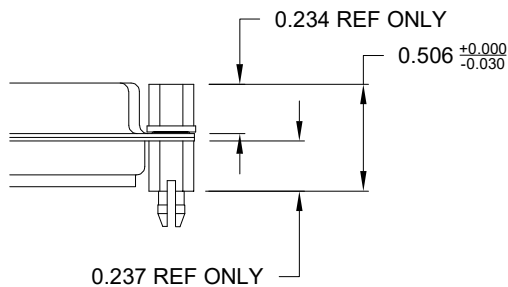
"03" // MATING SIDE



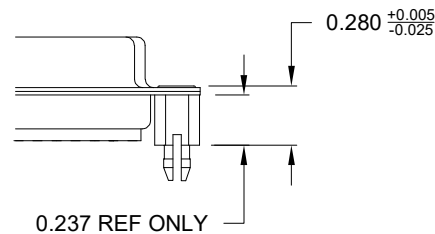
"05" // PCB SIDE



"91" // PCB SIDE

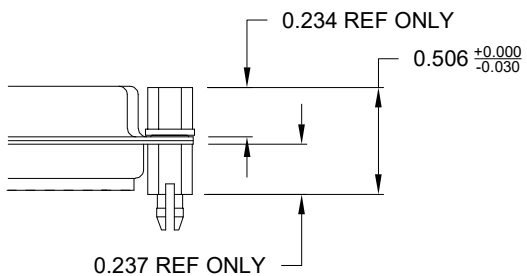


"90" // PCB SIDE **



NOTE: 4-40 FEMALE SCREW LOCK IS REMOVABLE


"92" // PCB SIDE **



UNITS = inch

DO NOT SCALE FROM DRAWING

RoHS COMPLIANT

| | | | | |
|--|---|--|------------------------------|----------------------------|
|  | THESE DRAWINGS AND SPECIFICATIONS ARE THE PROPERTY OF NorComp AND SHALL NOT BE REPRODUCED, COPIED OR USED AS THE BASIS FOR THE MANUFACTURE OF SALE OF APPARATUS WITHOUT WRITTEN PERMISSION. | | DRAWN: PAM JENKINS | DATE: 09-12-05 |
| | <h1>NorComp</h1> | | SCALE: NTS | SHEET 3 OF 3 |
| DWG NO. 172-YYY-113RYY1 | | | | |

X-ON Electronics

Largest Supplier of Electrical and Electronic Components

Click to view similar products for [D-Sub Standard Connectors](#) category:

Click to view products by [NorComp](#) manufacturer:

Other Similar products are found below :

[56F706-005-LI](#) [56F711-015](#) [LV242999-142T12](#) [015-0341-000](#) [015-0349-000](#) [015-0350-000](#) [015-8544-011](#) [015-8755-001](#) [017041-0005](#)
[020419-0104](#) [012-0467-000](#) [012-9507-114](#) [020745-0008](#) [609-25P](#) [609-9P](#) [M24308/2-23Z](#) [M24308/2-36Z](#) [CT0-24-10SC](#) [CT0E20-8PS](#)
[CT0E22-14SC](#) [CT0F16S-1SC](#) [CT0FA22-1SS](#) [CT0P14S-5SXS](#) [CT0P22-14PS](#) [CT0TA16-11SXCA232](#) [CT0U22-14PSA206F127](#) [CT1E20-](#)
[19SS](#) [CT1E20-22SCAU-G9](#) [CT1F22-14PC-G9](#) [CT1FC22-2PC](#) [CT1FC24-28SSAU](#) [CT1N22-22SS](#) [CT2-10SL-3SC](#) [CT2-14S-2PCA34](#) [CT2-](#)
[18-10PS-FMLB-D](#) [CT2-18-11PCAU](#) [CT2-18-1PSAUA34](#) [CT2-22-19SC](#) [CT2-22-19SS-A206](#) [CT2-24-2PS](#) [CT2-28-12SC](#) [CT2-28-](#)
[12SCA232](#) [CT2-28-12SSA232](#) [CT6-10SL-3SC](#) [CT6-10SL-4SC](#) [CT6-16-12SC](#) [CT6-18-10PSA206](#) [CT6-18-10PSA232](#) [CT6-18-](#)
[10SSF127A206](#) [CT6-28-22SS](#)