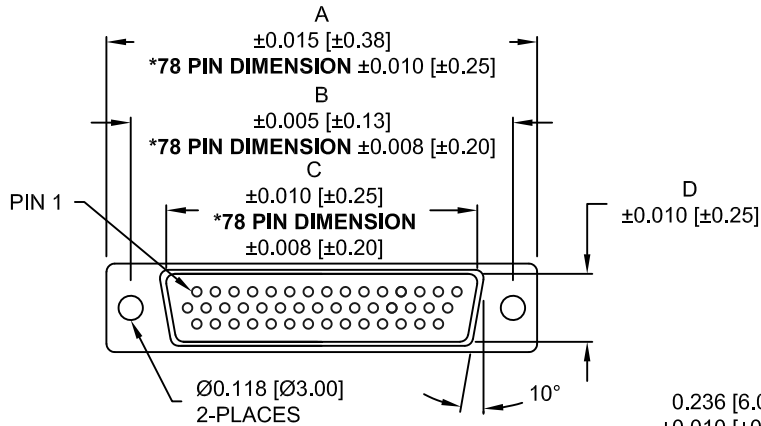


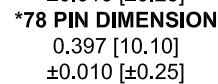
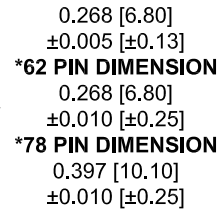
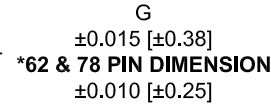
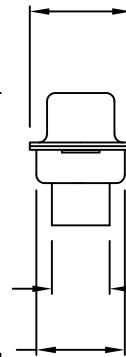
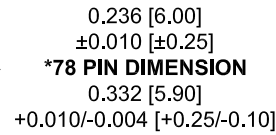
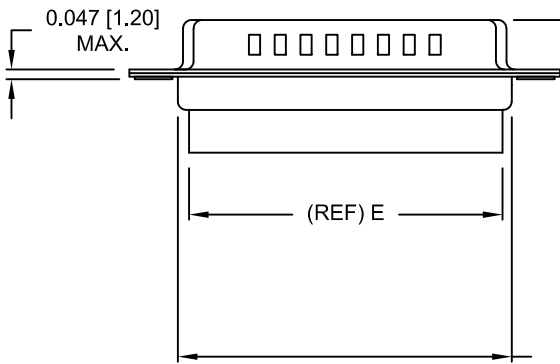
DESCRIPTION: MALE - CRIMP AND LOAD

****NOTE: CONTACTS MUST BE PURCHASED SEPARATELY****



4 ROWS

| No. OF PINS | DIMENSIONS | | | | | | | |
|-------------|------------|-------|-------|-------|-------|-------|-------|-------|
| | A | B | C | D | E | F | G | H |
| 15 | 1.213 | 0.984 | 0.666 | 0.323 | 0.610 | 0.759 | 0.494 | 0.421 |
| | 30.81 | 24.99 | 16.92 | 8.20 | 15.50 | 19.28 | 12.55 | 10.70 |
| 26 | 1.541 | 1.312 | 0.994 | 0.323 | 0.964 | 1.083 | 0.494 | 0.421 |
| | 39.14 | 33.32 | 25.25 | 8.20 | 24.50 | 27.51 | 12.55 | 10.70 |
| 44 | 2.088 | 1.852 | 1.534 | 0.323 | 1.494 | 1.618 | 0.494 | 0.421 |
| | 53.04 | 47.04 | 38.96 | 8.20 | 37.95 | 41.10 | 12.55 | 10.70 |
| 62 | 2.729 | 2.500 | 2.182 | 0.319 | 2.142 | 2.272 | 0.494 | 0.421 |
| | 69.32 | 63.50 | 55.42 | 8.10 | 54.40 | 57.71 | 12.55 | 10.70 |
| 78 | 2.644 | 2.406 | 2.081 | 0.439 | 2.035 | 2.169 | 0.605 | 0.527 |
| | 67.16 | 61.11 | 52.86 | 11.15 | 51.70 | 55.10 | 15.37 | 13.40 |



*62 & 78 PIN DIMENSION ±0.015 [±0.38]

180-YYY-17YLYY0

- SERIES
- POSITIONS
- 015
- 026
- 044
- 062
- 078
- GENDER
- 1 = MALE
- TERMINATION
- 7 = CRIMP & LOAD
- SHELL PLATING
- 2 = TIN (GROUND INDENTS)
- 3 = NICKEL (GROUND INDENTS)
- RoHS COMPLIANT (230°C)
- HARDWARE OPTIONS
- 00 = NO HARDWARE
- 01 = .157" CLINCH NUT (SOLDER SIDE)
- 02 = .250" CLINCH NUT (SOLDER SIDE)
- 03 = .250" CLINCH NUT (MATING SIDE)
- PLATING OPTIONS
- 0 = NO CONTACTS

MATERIAL:

SHELL: STEEL, TIN OR NICKEL PLATED
 INSULATOR: PBT, UL 94V-O RATED,
 +30% FIBER-GLASS

ELECTRICAL:

INSULATION RESISTANCE: 1,000 MOhms MIN.
 VOLTAGE: 500VAC FOR 1 MINUTE
 TEMPERATURE: -50° C TO 100° C

UNITS = inch[mm]

DO NOT SCALE FROM DRAWING



THESE DRAWINGS AND SPECIFICATIONS ARE THE PROPERTY OF NorComp AND SHALL NOT BE REPRODUCED, COPIED OR USED AS THE BASIS FOR THE MANUFACTURE OF SALE OF APPARATUS WITHOUT WRITTEN PERMISSION.

| | | | |
|-------------------------|--------------|----------------|--|
| DRAWN: J KADEL | | DATE: 07-16-18 | |
| SCALE: NTS | SHEET 1 OF 2 | REV 21 | |
| DWG NO. 180-YYY-17YLYY0 | | | |

RoHS COMPLIANT

NorComp

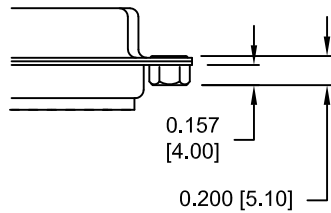
DESCRIPTION: CLINCH NUT HARDWARE

ALL CLINCH-NUTS ARE 4-40 INTERNAL THREADS

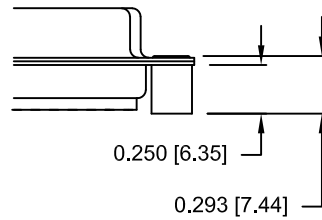
UNITS = inch[mm]

TOLERANCE:
ALL DIMENSIONS ARE ± 0.010

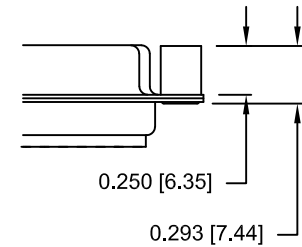
01X 0.157" (SOLDER SIDE)



02X 0.250" (SOLDER SIDE)



03X..... 0.250" (MATING SIDE)



DO NOT SCALE FROM DRAWING



THESE DRAWINGS AND SPECIFICATIONS ARE THE PROPERTY OF NorComp AND SHALL NOT BE REPRODUCED, COPIED OR USED AS THE BASIS FOR THE MANUFACTURE OF SALE OF APPARATUS WITHOUT WRITTEN PERMISSION.

DRAWN:
J KADEL

DATE:
07-16-18

NorComp

SCALE: NTS SHEET 2 OF 2 REV 21

DWG NO. 180-YYY-17YLYY0

RoHS COMPLIANT

X-ON Electronics

Largest Supplier of Electrical and Electronic Components

Click to view similar products for [Fibre Optic Connectors](#) category:

Click to view products by [NorComp](#) manufacturer:

Other Similar products are found below :

[0004700001](#) [6100-R](#) [6313](#) [F709722200](#) [F709730000](#) [F718183204](#) [F727403500](#) [F727752800](#) [8119](#) [9440F20-27S-190](#) [944-120-6001](#)
[9441F10SL-3S](#) [9444W28-21S](#) [9444W36-10S](#) [9446F10SL-4S](#) [9446W20-16S](#) [953-101-5310-P](#) [954-101-57202B](#) [A0270169](#) [12-9122](#) [12-5702](#)
[AX101713](#) [AX102420](#) [AX103923](#) [AX104024](#) [AX104193](#) [AX104230](#) [AX104562](#) [AX105203-B25](#) [AX105205-S1](#) [EHSC2M](#) [17-300800](#)
[181-011-126](#) [181-011-S](#) [181-057-126](#) [HRFC-R2\(40\)](#) [NKSOPBUY](#) [20500002116](#) [2064996-1](#) [20800001065](#) [2170](#) [9132](#) [2612](#) [2620](#) [9291](#)
[9440F16-10S](#) [9440F20-18S](#) [9446F16-10S-190](#) [953-106-50231](#) [953-120-5003](#)