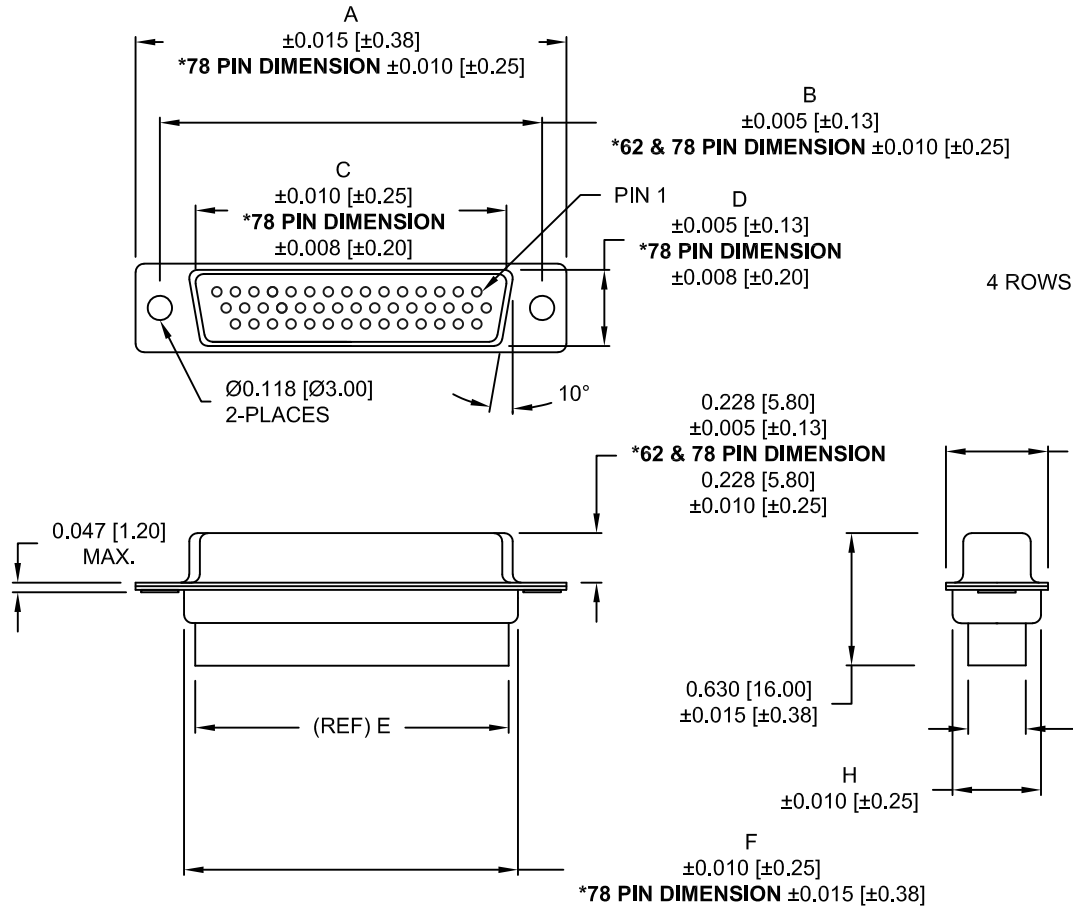
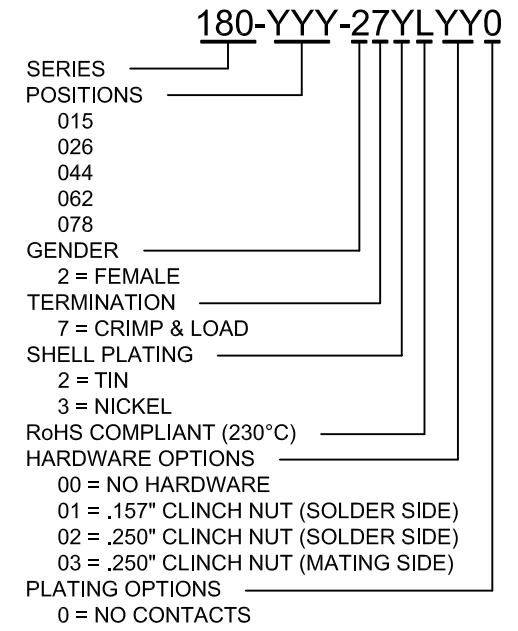


DESCRIPTION: HIGH DENSITY FEMALE - CRIMP AND LOAD

****NOTE: CONTACTS MUST BE PURCHASED SEPARATELY****



| No. OF PINS | DIMENSIONS | | | | | | | |
|-------------|------------|-------|-------|-------|-------|-------|-------|-------|
| | A | B | C | D | E | F | G | H |
| 15 | 1.213 | 0.984 | 0.643 | 0.311 | 0.610 | 0.759 | 0.494 | 0.421 |
| | 30.81 | 24.99 | 16.33 | 7.90 | 15.50 | 19.28 | 12.55 | 10.70 |
| 26 | 1.541 | 1.312 | 0.970 | 0.311 | 0.964 | 1.089 | 0.494 | 0.421 |
| | 39.14 | 33.32 | 24.66 | 7.90 | 24.50 | 27.65 | 12.55 | 10.70 |
| 44 | 2.088 | 1.852 | 1.511 | 0.311 | 1.494 | 1.618 | 0.494 | 0.421 |
| | 53.04 | 47.04 | 38.38 | 7.90 | 37.95 | 41.10 | 12.55 | 10.70 |
| 62 | 2.736 | 2.500 | 2.157 | 0.311 | 2.142 | 2.262 | 0.494 | 0.421 |
| | 69.50 | 63.50 | 54.80 | 7.90 | 54.40 | 57.46 | 12.55 | 10.70 |
| 78 | 2.644 | 2.406 | 2.061 | 0.422 | 2.035 | 2.169 | 0.605 | 0.527 |
| | 67.16 | 61.11 | 52.34 | 10.72 | 51.70 | 55.10 | 15.37 | 13.40 |



MATERIAL:

SHELL: STEEL, TIN OR NICKEL PLATED
 INSULATOR: PBT, UL 94V-O RATED, +30% FIBER-GLASS

ELECTRICAL:

INSULATION RESISTANCE: 1,000 MOhms MIN.
 VOLTAGE: 500VAC FOR 1 MINUTE
 TEMPERATURE: -50° C TO 100° C

UNITS = inch[mm]

DO NOT SCALE FROM DRAWING



THESE DRAWINGS AND SPECIFICATIONS ARE THE PROPERTY OF NorComp AND SHALL NOT BE REPRODUCED, COPIED OR USED AS THE BASIS FOR THE MANUFACTURE OF SALE OF APPARATUS WITHOUT WRITTEN PERMISSION.

| | | | |
|-------------------------|--------------|---------------|--|
| DRAWN: PAM JENKINS | | DATE: 7-19-05 | |
| SCALE: NTS | SHEET 1 OF 2 | REV 19 | |
| DWG NO. 180-YYY-27YLYY0 | | | |

RoHS COMPLIANT

NorComp

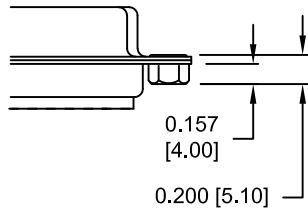
DESCRIPTION: CLINCH NUT HARDWARE

TOLERANCE:
ALL DIMENSIONS ARE ±0.010

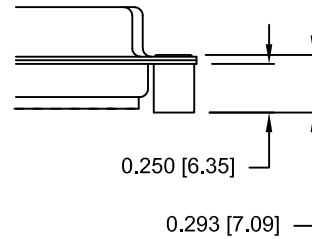
ALL CLINCH-NUTS ARE 4-40 INTERNAL THREADS

UNITS = inch[mm]

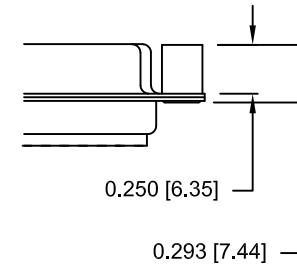
01X 0.157" (SOLDER SIDE)




02X 0.250" (SOLDER SIDE)



03X..... 0.250" (MATING SIDE)



DO NOT SCALE FROM DRAWING

| | | | | | |
|--|---|-------------------------|------------|------------------|-----------|
|  | THESE DRAWINGS AND SPECIFICATIONS ARE THE PROPERTY OF NorComp AND SHALL NOT BE REPRODUCED, COPIED OR USED AS THE BASIS FOR THE MANUFACTURE OF SALE OF APPARATUS WITHOUT WRITTEN PERMISSION. | DRAWN: PAM JENKINS | | DATE: 7-19-05 | |
| | | SCALE: NTS | SHEET 2 | OF 2 | REV 19 |
| NorComp | | DWG NO. 180-YYY-27YLYY0 | | | |

RoHS COMPLIANT

X-ON Electronics

Largest Supplier of Electrical and Electronic Components

Click to view similar products for [Fibre Optic Connectors](#) category:

Click to view products by [NorComp](#) manufacturer:

Other Similar products are found below :

[0004700001](#) [6100-R](#) [6313](#) [F709722200](#) [F709730000](#) [F718183204](#) [F727403500](#) [F727752800](#) [8119](#) [9440F20-27S-190](#) [944-120-6001](#)
[9441F10SL-3S](#) [9444W28-21S](#) [9444W36-10S](#) [9446F10SL-4S](#) [9446W20-16S](#) [953-101-5310-P](#) [954-101-57202B](#) [A0270169](#) [12-9122](#) [12-5702](#)
[AX101713](#) [AX102420](#) [AX103923](#) [AX104024](#) [AX104193](#) [AX104230](#) [AX104562](#) [AX105203-B25](#) [AX105205-S1](#) [EHSC2M](#) [17-300800](#)
[181-011-126](#) [181-011-S](#) [181-057-126](#) [HRFC-R2\(40\)](#) [NKSOPBUY](#) [20500002116](#) [2064996-1](#) [20800001065](#) [2170](#) [9132](#) [2612](#) [2620](#) [9291](#)
[9440F16-10S](#) [9440F20-18S](#) [9446F16-10S-190](#) [953-106-50231](#) [953-120-5003](#)