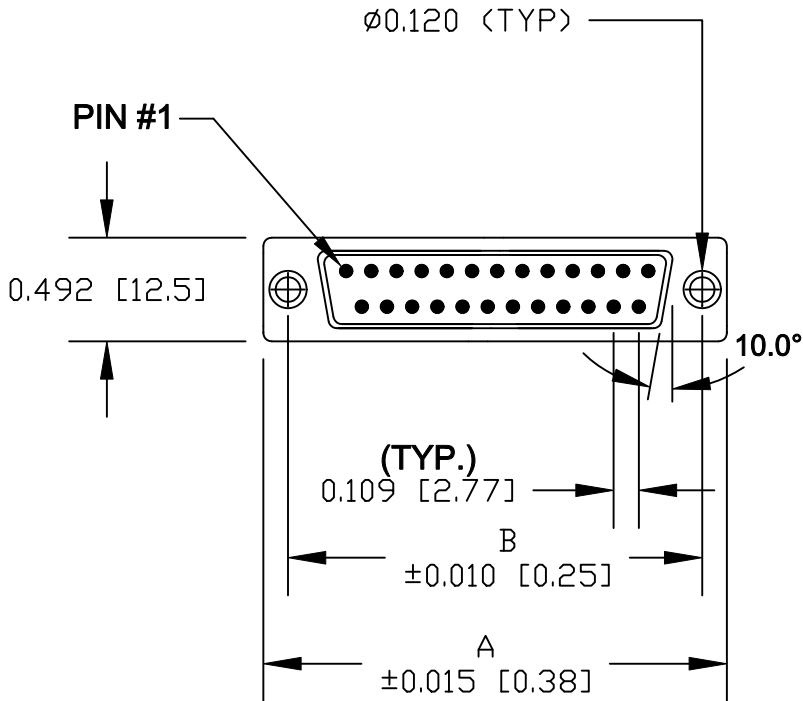
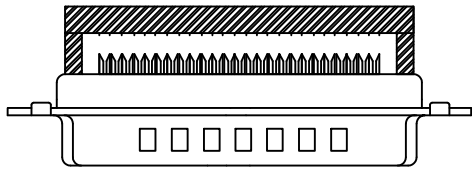
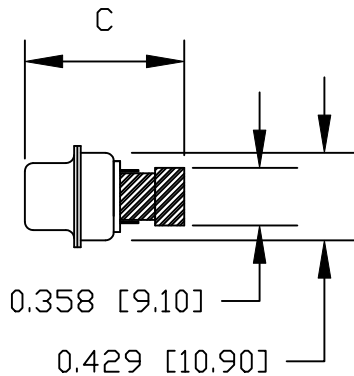


DESCRIPTION: LOW PROFILE FLAT RIBBON CONNECTOR

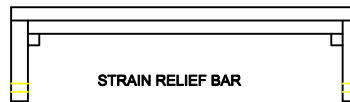
25 POSITION SHOWN FOR REFERENCE



TERMINATED



CONNECTOR COMES WITH STRAIN RELIEF BAR



SPECIFICATIONS:

MATERIALS:

- SHELL: STEEL, TIN PLATED
- INSULATOR: UL 94V-0 RATED POLYESTER, GLASFILLED, BLACK
- CONTACTS: COPPER ALLOY

ELECTRICAL:

- CURRENT RATING: 1.5 AMP
- CONTACT RESISTANCE: 10 mOHMS MAX
- INSULATOR RESISTANCE: 5000 MOHMS MIN
- VOLTAGE: 500V AC FOR 1 MINUTE
- TEMPERATURE: -55°C TO +125°C

	A	B	C CLOSED	C OPEN
9	1.213	0.984	0.610	0.728
	30.81	25.00	15.50	18.50
15	1.541	1.312	0.610	0.728
	39.14	33.33	15.50	18.50
25	2.087	1.852	0.610	0.728
	53.00	47.04	15.50	18.50
37	2.729	2.500	0.610	0.728
	69.32	63.50	15.50	18.50

184AYYY-192LYY1

- SERIES \_\_\_\_\_
- POSITIONS \_\_\_\_\_
- 009 \_\_\_\_\_
- 015 \_\_\_\_\_
- 025 \_\_\_\_\_
- 037 \_\_\_\_\_
- GENDER \_\_\_\_\_
- 1 = MALE
- 2 = FEMALE
- TERMINATION \_\_\_\_\_
- 9 = IDC
- SHELL PLATING \_\_\_\_\_
- 2 = TIN
- HARDWARE OPTIONS \_\_\_\_\_
- 00 = NO HARDWARE
- 01 = .065 4-40 CLINCH NUT BOARD SIDE
- PLATING OPTIONS \_\_\_\_\_
- 1 = GOLD FLASH

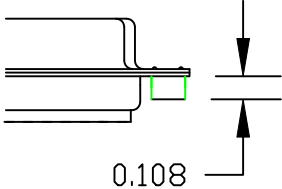
ACCEPTS: 28 AWG STRANDED .050" CENTER FLAT RIBBON CABLE

	THESE DRAWINGS AND SPECIFICATIONS ARE THE PROPERTY OF NorComp AND SHALL NOT BE REPRODUCED, COPIED OR USED AS THE BASIS FOR THE MANUFACTURE OF SALE OF APPARATUS WITHOUT WRITTEN PERMISSION.		DRAWN: M. SIGMON	DATE: 04-05-11
			CHECKED:	DATE:
NorComp		SCALE: 1:1	SHEET 1 OF 2	REV 1
		DWG NO. 184AYYY-192LYY1		


RoHS COMPLIANT

DESCRIPTION: CLINCH NUT HARDWARE

CLINCH-NUTS ARE 4-40 INTERNAL THREADS



01X ..... .108" (BOARD SIDE) - CN1

	THESE DRAWINGS AND SPECIFICATIONS ARE THE PROPERTY OF NorComp AND SHALL NOT BE REPRODUCED, COPIED OR USED AS THE BASIS FOR THE MANUFACTURE OF SALE OF APPARATUS WITHOUT WRITTEN PERMISSION.	DRAWN: M. SIGMON	DATE: 04-05-11
		CHECKED:	DATE:
<b>NorComp</b>	SCALE:	SHEET 2 OF 2	REV 1
	DWG NO.	184AYYY-192LYY1	

## X-ON Electronics

Largest Supplier of Electrical and Electronic Components

*Click to view similar products for [D-Sub Standard Connectors](#) category:*

*Click to view products by [NorComp](#) manufacturer:*

Other Similar products are found below :

[56F711-015](#) [LV242999-142T12](#) [015-0341-000](#) [015-0372-005](#) [015-0372-008](#) [015-8755-001](#) [020419-0104](#) [012-0467-000](#) [012-9507-034](#) [012-9507-114](#) [020745-0008](#) [609-25P](#) [CT2-14S-2PCA34](#) [CT2-18-11PCAU](#) [CT6-10SL-3SC](#) [CT6-10SL-4SC](#) [CT6-14S-2SC](#) [CT6E14SA7SC](#)  
[M83513/01-FC](#) [M83723/76W24619 L/C](#) [M85049/48-3-2F](#) [6STD09PCM99B70X](#) [6STD09SCM99B30X](#) [6STD09SCT99S40X](#)  
[6STD15PCT99S40X](#) [6STD15SCM99B30X](#) [6STD15SCT99S40X](#) [6STF09PCM05B70X](#) [7-135760-9](#) [MC11E-10-6SN](#) [747552-3](#) [MD1-21PS](#)  
[MDM-15SCBRM7-F222](#) [MDM96517-699](#) [MDM96521-744](#) [MDVB1-21SL1](#) [MIK0-1-7SH003](#) [MIKQ6-7SH076](#) [MIKQ7-7PH077](#) [MIKQ7-7PH11](#) [MIKQ7-7PH32](#) [MJSV-28SL61](#) [MKJ4A1F14-55S](#) [8-135760-3](#) [8STD09PCM99B30X](#) [PG-KV/PV-16-GROM-SEALING](#) [GDA15P](#)  
[GDAY15PB](#) [980-0000-170](#) [980-0000-171](#)