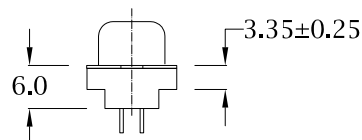
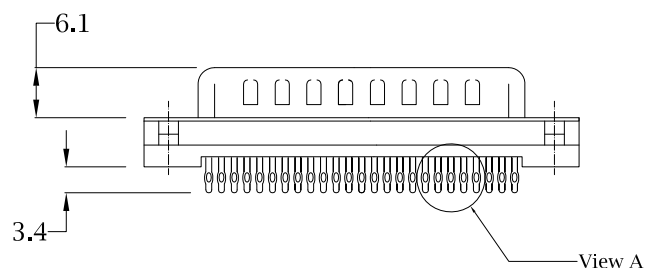
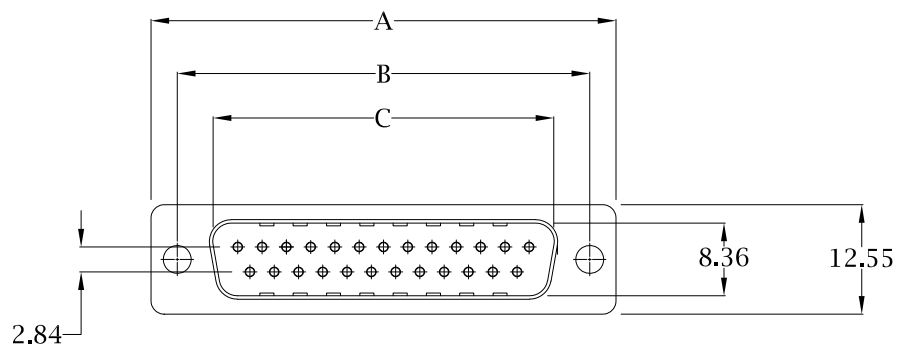


DESCRIPTION: Vertical Mount Male Low Profile/Plastic Back Press Fit

Dimensions (mm)

Size	A	B	C
09	30.81	24.99	16.92
15	39.20	33.30	25.25
25	53.05	47.04	38.96
37	69.40	63.50	55.42

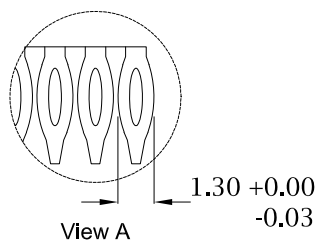
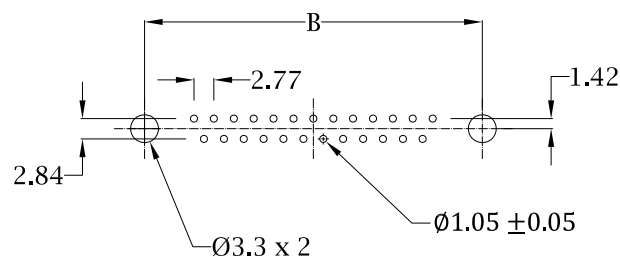


Material:

Insulator: Nylon 6T, UL94V-0, 260°C Process Temp, Black
 Contact: Phosphor Bronze
 Shell: Nickel Plated Steel

Electrical:

Current Rating: 5 AMPS
 Contact Resistance: 20 mOhms Max.
 Insulation Resistance: 1000 MOhms Min.
 Working Voltage: 250V
 Operating Temperature: -55° C TO +125° C



1 9 1 - Y Y Y - 1 2 3 R Y Y Y

- Series**
- Position**
- 009
- 015
- 025
- 037
- Gender**
- 1 = Male
- Termination**
- 2 = Press Fit
- Shell Plating**
- 3 = Nickel
- Hardware Options**
- 00 = No Hardware
- 55 = 4-40 Insert
- 56 = 4-40 Insert with Board Locks
- 57 = 4-40 Standoff with Board Locks
- 59 = 4-40 Standoff
- Plating Options**
- 1 = Gold Flash mating area, Tin plated tails
- 2 = 30µ" Gold mating area, Tin plated tails

RoHS COMPLIANT

UNITS = mm

DO NOT SCALE FROM DRAWING



THESE DRAWINGS AND SPECIFICATIONS ARE THE PROPERTY OF NorComp AND SHALL NOT BE REPRODUCED, COPIED OR USED AS THE BASIS FOR THE MANUFACTURE OR SALE OF APPARATUS WITHOUT WRITTEN PERMISSION.

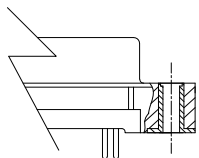
DRAWN:
Pam Jenkins
DATE:
9/15/2003

Tolerance
 X. ±0.38
 .X ±0.25
 .XX ±0.13

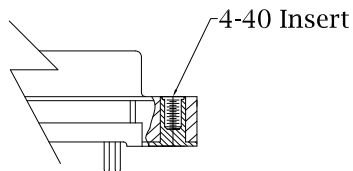
NorComp

SCALE: NTS SHEET 1 OF 2 REV 4
 DWG NO. 191-YYY-123RYYY

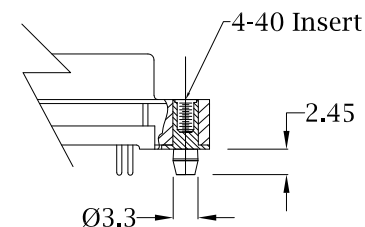
00 = Ø3.05 THRU HOLE



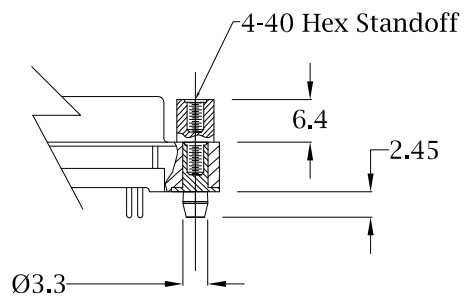
55 = 4-40 INSERT



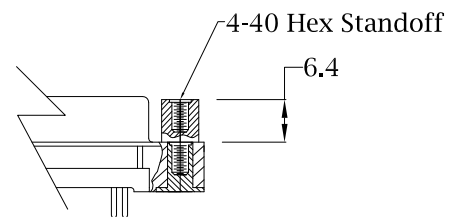
56 = 4-40 INSERT WITH BOARD LOCK



57 = 4-40 STANDOFF WITH BOARD LOCKS



59 = 4-40 STANDOFF



RoHS COMPLIANT



THESE DRAWINGS AND SPECIFICATIONS ARE THE PROPERTY OF NorComp AND SHALL NOT BE REPRODUCED, COPIED OR USED AS THE BASIS FOR THE MANUFACTURE OR SALE OF APPARATUS WITHOUT WRITTEN PERMISSION.

DRAWN:
Pam Jenkins
DATE:
9/15/2003

Tolerance
X. ±0.38
.X ±0.25
.XX ±0.13

UNITS = mm

DO NOT SCALE FROM DRAWING

NorComp

SCALE:
NTS
DWG NO.

SHEET OF
2 2

REV
4

191-YYY-123RYYY

X-ON Electronics

Largest Supplier of Electrical and Electronic Components

Click to view similar products for [D-Sub Standard Connectors](#) category:

Click to view products by [NorComp](#) manufacturer:

Other Similar products are found below :

[56F711-015](#) [LV242999-142T12](#) [015-0341-000](#) [015-0372-005](#) [015-0372-008](#) [015-8755-001](#) [020419-0104](#) [012-0467-000](#) [012-9507-034](#) [012-9507-114](#) [020745-0008](#) [609-25P](#) [CT2-14S-2PCA34](#) [CT2-18-11PCAU](#) [CT6-10SL-3SC](#) [CT6-10SL-4SC](#) [CT6-14S-2SC](#) [CT6E14SA7SC](#)
[M83513/01-FC](#) [M83723/76W24619 L/C](#) [M85049/48-3-2F](#) [6STD09PCM99B70X](#) [6STD09SCM99B30X](#) [6STD09SCT99S40X](#)
[6STD15PCT99S40X](#) [6STD15SCM99B30X](#) [6STD15SCT99S40X](#) [6STF09PCM05B70X](#) [7-135760-9](#) [MC11E-10-6SN](#) [747552-3](#) [MD1-21PS](#)
[MDM-15SCBRM7-F222](#) [MDM96517-699](#) [MDM96521-744](#) [MDVB1-21SL1](#) [MIK0-1-7SH003](#) [MIKQ6-7SH076](#) [MIKQ7-7PH077](#) [MIKQ7-7PH11](#) [MIKQ7-7PH32](#) [MJSV-28SL61](#) [MKJ4A1F14-55S](#) [8-135760-3](#) [8STD09PCM99B30X](#) [PG-KV/PV-16-GROM-SEALING](#) [GDA15P](#)
[GDAY15PB](#) [980-0000-170](#) [980-0000-171](#)