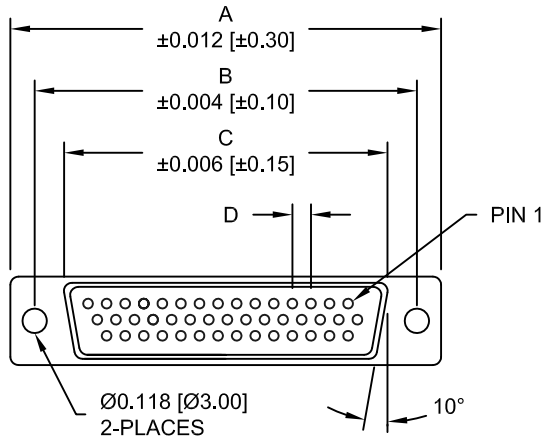


DESCRIPTION: HIGH DENSITY FEMALE - VERTICAL DIP - LOW PROFILE - STAMPED

DIMENSIONS

SIZE	A	B	C	D
15	30.80	24.99	16.34	2.29
	1.213	0.984	0.643	0.090
26	39.20	33.32	24.70	2.29
	1.543	1.312	0.972	0.090
44	53.00	47.04	38.40	2.29
	2.087	1.852	1.512	0.090
62	69.40	63.50	55.80	2.41
	2.732	2.500	2.197	0.095
78	67.00	61.10	52.20	2.41
	2.638	2.406	2.055	0.095

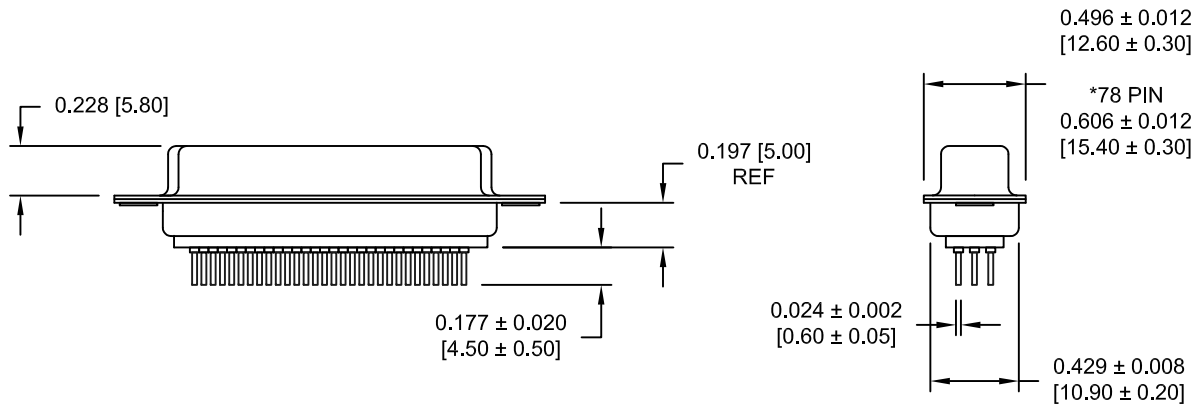


MATERIAL:

SHELL: STEEL, NICKEL PLATED
 INSULATOR: PBT, UL 94V-O RATED, 230°C PROCESS TEMP
 CONTACT: BRASS, GOLD FLASH ENTIRE CONTACT

ELECTRICAL:

CURRENT RATING: 2 AMPS
 WITHSTANDING VOLTAGE: 1,000VAC AT
 CONTACT RESISTANCE: 10 mOhms Max.
 INSULATION RESISTANCE: 5,000 MOhms min.
 VOLTAGE: 500VAC FOR 1 MINUTE
 TEMPERATURE: -55° C TO +125° C



195-YYY-2 1 3 L YY 1

SERIES _____
 POSITIONS _____
 015
 026
 044
 062
 078
 GENDER _____
 2 = FEMALE
 TERMINATION _____
 1 = PC MOUNT
 SHELL PLATING _____
 3 = NICKEL
 RoHS COMPLIANT _____
 LOW PROCESS TEMP. - 230°C
 HARDWARE OPTIONS _____
 00 = NO HARDWARE
 03 = 4-40 HEX STANDOFFS
 55 = 4-40 INSERTS
 PLATING OPTIONS _____
 1 = GOLD FLASH

RoHS COMPLIANT

UNITS = INCHES [MM] DO NOT SCALE FROM DRAWING



THESE DRAWINGS AND SPECIFICATIONS ARE THE PROPERTY OF NorComp AND SHALL NOT BE REPRODUCED, COPIED OR USED AS THE BASIS FOR THE MANUFACTURE OR SALE OF APPARATUS WITHOUT WRITTEN PERMISSION.

DRAWN:
 PAM JENKINS

DATE:
 09/12/05

NorComp

SCALE:
 NTS

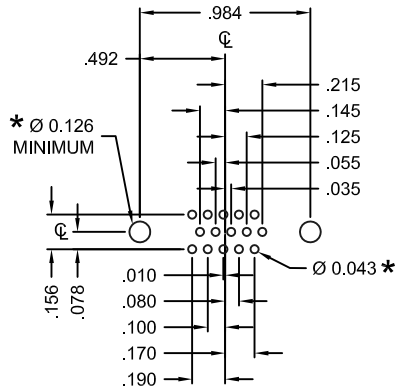
SHEET OF
 1 3

REV
 7

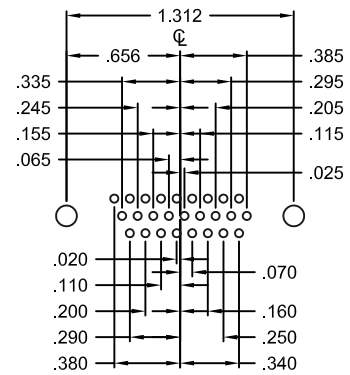
DWG NO.

195-YYY-213LYY1

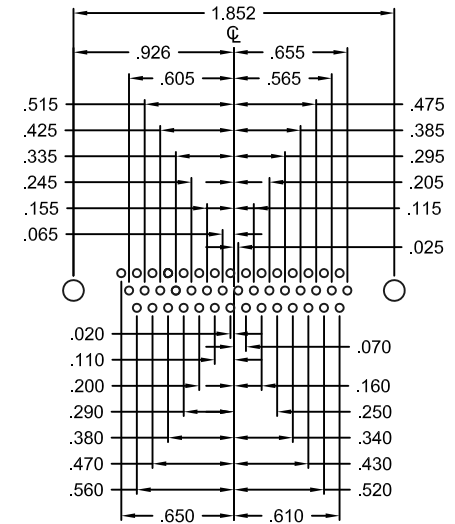
DESCRIPTION: PCB LAYOUT - H.D. VERTICAL - FEMALE



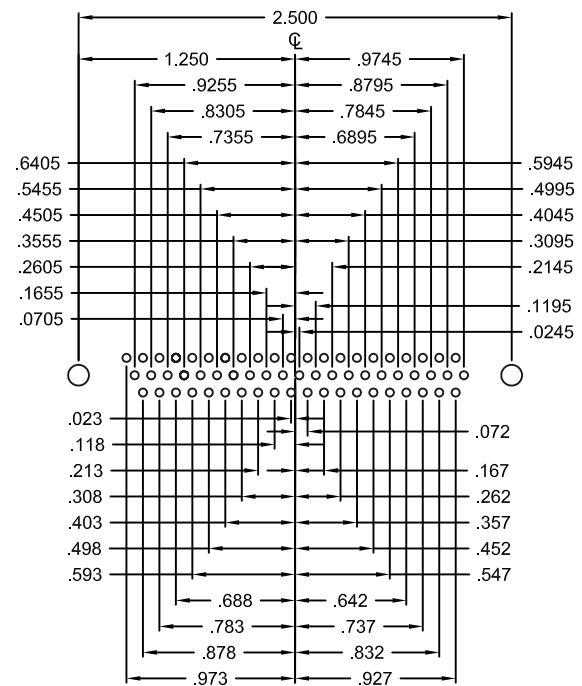
15 POSITION



26 POSITION



44 POSITION

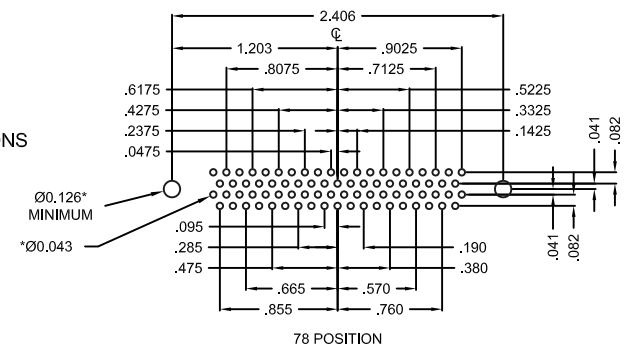


62 POSITION

HOLE PATTERN SHOWN ARE FOR FEMALE

UNITS = inch

* TYP. SUGGESTED SIZE MAY NOT BE SUITABLE FOR ALL APPLICATIONS



78 POSITION

RoHS COMPLIANT

UNITS = INCHES [MM] DO NOT SCALE FROM DRAWING

NT
THESE DRAWINGS AND SPECIFICATIONS ARE THE PROPERTY OF NorComp AND SHALL NOT BE REPRODUCED, COPIED OR USED AS THE BASIS FOR THE MANUFACTURE OR SALE OF APPARATUS WITHOUT WRITTEN PERMISSION.

DRAWN: PAM JENKINS
DATE: 09/12/05

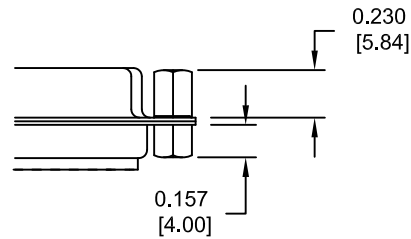
NorComp

SCALE: NTS	SHEET 2 OF 3	REV 7
DWG NO. 195-YYY-213LYY1		

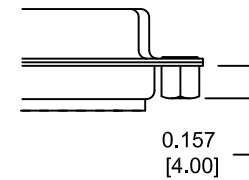
DESCRIPTION: HARDWARE

TOLERANCE:
ALL DIMENSIONS ARE ± 0.010 [0.25]

03X 0.158" (BOARD SIDE) - 0.230" MATING SIDE



55X 0.158" (BOARD SIDE)



RoHS COMPLIANT

UNITS = INCHES [MM] DO NOT SCALE FROM DRAWING



THESE DRAWINGS AND SPECIFICATIONS ARE THE PROPERTY OF NorComp AND SHALL NOT BE REPRODUCED, COPIED OR USED AS THE BASIS FOR THE MANUFACTURE OR SALE OF APPARATUS WITHOUT WRITTEN PERMISSION.

DRAWN:
PAM JENKINS

DATE:
09/12/05

NorComp

SCALE:
NTS

SHEET OF
3 3

REV
7

DWG NO.

195-YYY-213LYY1

X-ON Electronics

Largest Supplier of Electrical and Electronic Components

Click to view similar products for [D-Sub High Density Connectors](#) category:

Click to view products by [NorComp](#) manufacturer:

Other Similar products are found below :

[97-3250-11](#) [163A16809X](#) [163A17089X](#) [164A17199X](#) [242A25680X](#) [L717HDB44POL2R210](#) [L717HDEH15POL2](#) [L777HDE15P](#)
[L77HDE15SC309](#) [163A16759X](#) [163A16839X](#) [163A16989X](#) [163A17079X](#) [164A17329X](#) [164A18219X](#) [241A16440X](#) [241A16550X](#)
[241A16680X](#) [241A20810X](#) [241A25740X](#) [CT25-44P](#) [MDBE15PE766](#) [L177HDE15SOL2RM23](#) [L177HRC62S](#) [L177HRC62SVFM](#)
[L177HRCG62S](#) [L717HDEG15POL2RM5](#) [L77HDA26SVF](#) [L77HDE15SD1CO](#) [L77HDEH15SOL2RM832](#) [443895-3](#) [106698-1](#) [280-012K2C](#)
[L177HRB44S](#) [164A17039X](#) [09562004701510](#) [164A17969X](#) [L777HRC62P](#) [241A17960X](#) [164A18269X](#) [280-019S1S9MEN](#) [L777HDEG15P](#)
[280-018P3S25MEGN](#) [206504-2](#) [40-9515HDSP](#) [2057140-1](#) [C115370-6002](#) [DFMA104SNMBFR172FR022](#) [HDC9F200E2S](#) [M24308/4-265](#)