

NUMBER OF CONTACTS	"A" Inch (mm)	"B" Inch (mm)	"C" Inch (mm)	"D" Inch (mm)	"E" Inch (mm)
15	1.213 (30.80)	.984 (24.99)	.666 (16.92)	.090 (2.29)	.756 (19.20)
26	1.543 (39.20)	1.312 (33.32)	.970 (24.65)	.090 (2.29)	1.091 (27.70)
44	2.087 (53.00)	1.852 (47.04)	1.512 (38.40)	.090 (2.29)	1.618 (41.10)
62	2.732 (69.40)	2.500 (63.50)	2.157 (54.80)	.095 (2.41)	2.256 (57.30)
78	2.638 (67.00)	2.406 (61.10)	2.079 (52.81)	.095 (2.41)	2.169 (55.10)

NOTE:

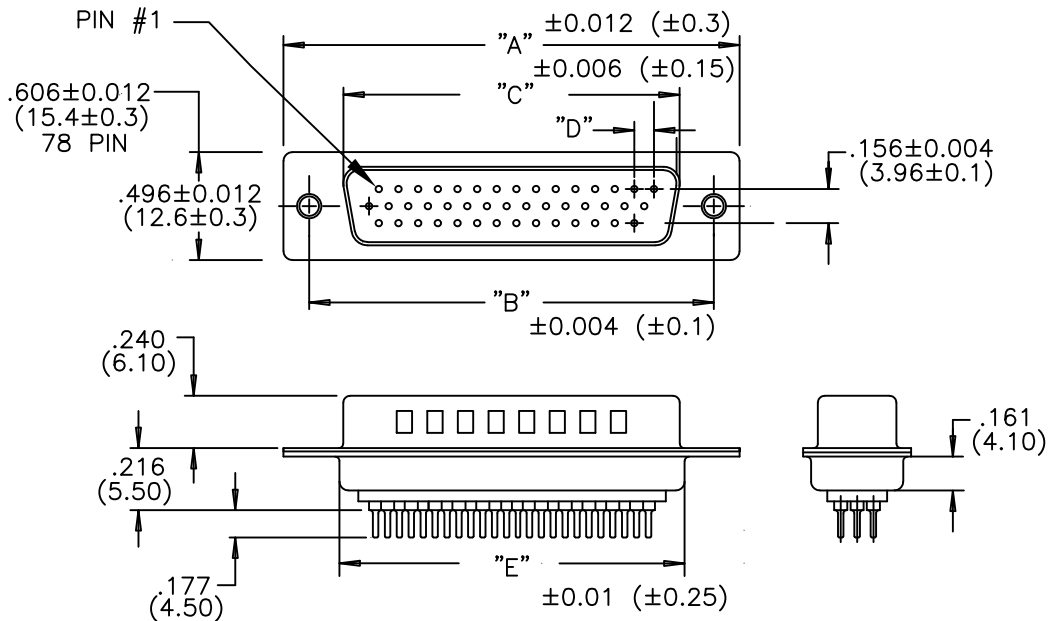
MATERIAL HOUSING: PBT UL94V-0, BLACK  
 230°C PROCESS TEMP  
 COPPER ALLOY  
 STEEL

CONTACT: FULL GOLD FLASH  
 SHELL: NICKEL

FINISH CONTACT: FULL GOLD FLASH  
 SHELL: NICKEL

ELECTRICAL RATED CURRENT: 5A  
 DWV: 500VAC RMS FOR 1 MIN  
 INSULATOR RESISTANCE: 1000 MOhms MIN.  
 CONTACT RESISTANCE: 15 mOhms MAX.

ENVIRONMENT OPERATION TEMPERATURE: -50°C TO +100°C



SERIES \_\_\_\_\_ 197-YYY-Y13LYY1

NUMBER OF CONTACTS \_\_\_\_\_

GENDER \_\_\_\_\_  
 1 = MALE  
 2 = FEMALE (NO GROUND INDENTS)

PC MOUNT \_\_\_\_\_  
 3 = NICKEL SHELL

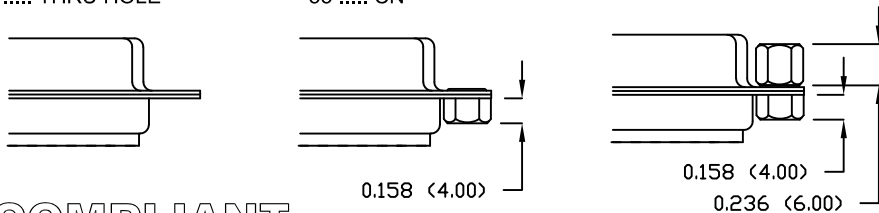
HARDWARE OPTIONS: \_\_\_\_\_  
 00 = .120 MOUNTING HOLE  
 55 = 4-40 CLINCH NUT (CN)  
 03 = 4-40 CLINCH NUT (CN) && 4-40 JACK SCREW

PLATING: \_\_\_\_\_  
 1 = GOLD FLASH

00 ..... THRU HOLE

55 ..... CN

03 ..... CN // JACK SCREW



RoHS COMPLIANT

UNITS = inch (mm)

DO NOT SCALE FROM DRAWING



THESE DRAWINGS AND SPECIFICATIONS ARE THE PROPERTY OF NorComp AND SHALL NOT BE REPRODUCED, COPIED OR USED AS THE BASIS FOR THE MANUFACTURE OR SALE OF APPARATUS WITHOUT WRITTEN PERMISSION.

DRAWN:

P. JENKINS

DATE:

09/15/2005

NorComp

SCALE: NTS

SHEET 1 OF 1

REV 4

DWG NO.

197-YYY-113LYY1

## X-ON Electronics

Largest Supplier of Electrical and Electronic Components

*Click to view similar products for [D-Sub High Density Connectors](#) category:*

*Click to view products by [NorComp](#) manufacturer:*

Other Similar products are found below :

[97-3250-11](#) [163A16809X](#) [163A17089X](#) [164A17199X](#) [242A25680X](#) [L717HDB44POL2R210](#) [L717HDEH15POL2](#) [L777HDE15P](#)  
[L77HDE15SC309](#) [163A16759X](#) [163A16839X](#) [163A16989X](#) [163A17079X](#) [164A17329X](#) [164A18219X](#) [241A16440X](#) [241A16550X](#)  
[241A16680X](#) [241A20810X](#) [241A25740X](#) [CT25-44P](#) [MDBE15PE766](#) [L177HDE15SOL2RM23](#) [L177HRC62S](#) [L177HRC62SVFM](#)  
[L177HRCG62S](#) [L717HDEG15POL2RM5](#) [L77HDA26SVF](#) [L77HDE15SD1CO](#) [L77HDEH15SOL2RM832](#) [443895-3](#) [106698-1](#) [280-012K2C](#)  
[L177HRB44S](#) [164A17039X](#) [09562004701510](#) [164A17969X](#) [L777HRC62P](#) [241A17960X](#) [164A18269X](#) [280-019S1S9MEN](#) [L777HDEG15P](#)  
[280-018P3S25MEGN](#) [206504-2](#) [40-9515HDSP](#) [2057140-1](#) [C115370-6002](#) [DFMA104SNMBFR172FR022](#) [HDC9F200E2S](#) [M24308/4-265](#)