

**DESCRIPTION: .100 CENTER SHUNT - OPEN TOP**

**MATERIALS:**

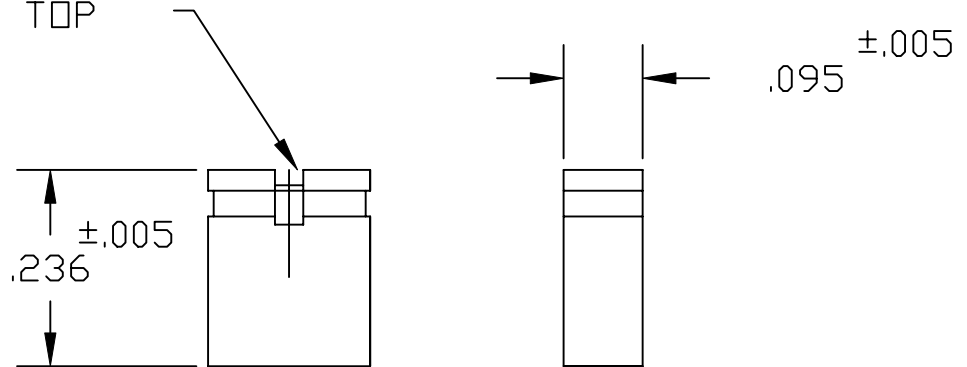
INSULATING MATERIAL: POLYAMIDE  
 CONTACT: PHOSPHOR BRONZE

**ELECTRICALS:**

CONTACT RATING: 3 AMPS  
 CONTACT RESISTANCE: 7 MILLIOHMS TYPICAL  
 DIELECTRIC STRENGTH: 1000V AC RMS  
 INSULATION RESISTANCE: 5000 MEGOHMS MIN.  
 OPERATING TEMPERATURE: -40°C TO 150°C

**SPECIFICATIONS:**  
 RoHS COMPLIANT

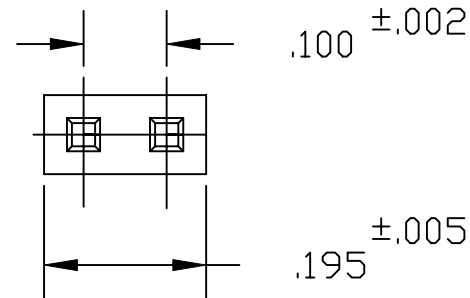
OPEN TOP



4167-03-00RPX

PLATING: 1 = GOLD OVER NICKEL

RoHS COMPLIANT



THESE DRAWINGS AND SPECIFICATIONS ARE THE PROPERTY OF NorComp AND SHALL NOT BE REPRODUCED, COPIED OR USED AS THE BASIS FOR THE MANUFACTURE OF SALE OF APPARATUS WITHOUT WRITTEN PERMISSION.

DRAWN: PAM JENKINS  
 DATE: 4-13-05

CHECKED:  
 DATE:

**NorComp**

SCALE: SHEET 1 OF 1 REV 2

DWG NO. 4167-03-00RPX

## X-ON Electronics

Largest Supplier of Electrical and Electronic Components

*Click to view similar products for [D-Sub Tools & Hardware](#) category:*

*Click to view products by [NorComp](#) manufacturer:*

Other Similar products are found below :

[000-01-09-132](#) [000-01-21-132](#) [000-01-31-162](#) [572019-00105-70](#) [000-01-37-162](#) [621-250-113-115](#) [D110550-2](#) [D20418-137](#) [780-518-50SG6-WS](#) [86552009](#) [86553115TLF](#) [86553117TLF](#) [1230032-1](#) [1-5021101-2](#) [15-000050](#) [1589283-4](#) [160-000-005R031](#) [16-000230](#) [160-025-004R031](#) [160-020-209R000](#) [160X10909X](#) [164C03939A](#) [177-505-A-2-2](#) [1-966830-8](#) [21018-6](#) [2-1393560-9](#) [JS-1000](#) [L17D204182M3E](#) [L17D53018](#) [300X10779X](#) [160X10189X](#) [160X10419X](#) [162-000-050R000](#) [21018-5](#) [212561-3](#) [248C21550X](#) [CF15P](#) [QLOCKPOST-2](#) [D110277](#) [500-008NF1K-01](#) [500-008NF3R3KS-01](#) [500-017M09FN](#) [500-017M15MHN](#) [500-024M1](#) [500-068M3](#) [5-1393561-5](#) [C115373-0001](#) [C115373-0002](#) [3342-4-KIT](#) [K1003](#)