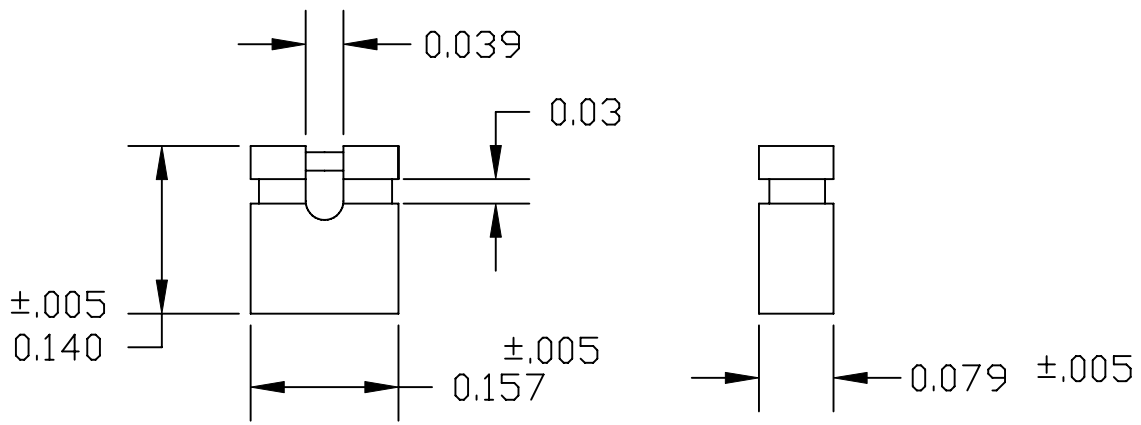



DESCRIPTION: 2MM SHUNT STANDARD PROFILE, .140"



MATERIAL: HOUSING: 30± GLASS FILLED PBT (UL 94V-0) BLACK  
 CONTACT: 5191 PHOSPHOR BRONZE  
 PLATING: GOLD FLASH  
 RoHS COMPLIANT

ELECTRICALS: CURRENT RATING: 3.0 AMPERE MAX.  
 CONTACT RESISTANCE: 30 MILLIOHM MAX.  
 DIELECTRIC WITHSTANDING VOLTAGE: 650V AC RMS AT SEA LEVEL  
 INSULATION RESISTANCE: 1000 MOHMS MAX.  
 OPERATING TEMP: -55°C TO 105°C

	THESE DRAWINGS AND SPECIFICATIONS ARE THE PROPERTY OF NorComp AND SHALL NOT BE REPRODUCED, COPIED OR USED AS THE BASIS FOR THE MANUFACTURE OF SALE OF APPARATUS WITHOUT WRITTEN PERMISSION.		DRAWN: PAM JENKINS	DATE: 1-17-06
			CHECKED:	DATE:
<h1>NorComp</h1>		SCALE: NTS	SHEET 1 OF 1	REV 1
		DWG NO. 810-002-SP2L001		

## X-ON Electronics

Largest Supplier of Electrical and Electronic Components

*Click to view similar products for [Headers & Wire Housings](#) category:*

*Click to view products by [NorComp](#) manufacturer:*

Other Similar products are found below :

[892-18-020-10-001101](#) [58102-G61-06LF](#) [582553-1](#) [0009485154](#) [009176003701906](#) [0050291907](#) [LY20-4P-DT1-P1E-BR](#) [02.125.8002.8](#)  
[609-3404](#) [61062-3](#) [61082-181009](#) [622-3653LF](#) [63453-116](#) [636-1030](#) [636-1427](#) [636-3427](#) [636-4007](#) [641938-9](#) [641991-4](#) [644827-2](#) [65817-](#)  
[010LF](#) [65817-015LF](#) [65863-015LF](#) [66207-023LF](#) [67095-007LF](#) [67601157](#) [68648-049](#) [70.362.1628.0](#) [70-4210](#) [70-4226B](#) [70-4853B](#) [707-](#)  
[5020](#) [707-5028](#) [71.350.2428.0](#) [71918-208LF](#) [71961-016LF](#) [733-134](#) [733-162](#) [754199-000](#) [760-3052](#) [787-8014-00](#) [79531-3000](#) [FCN-](#)  
[360C032-B](#) [FCN-367T-T012/H](#) [FCN-723D010/2](#) [80.063.4001.1](#) [800-90-001-10-001000](#) [800-90-010-10-002000](#) [801-43-002-10-013000](#)  
[801-43-006-10-002000](#)