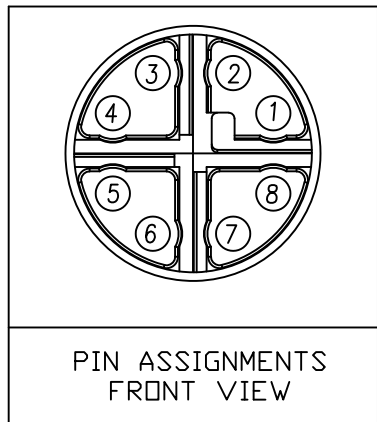


NUT



PIN ASSIGNMENTS
FRONT VIEW

NOTE:

MATERIAL

HOUSING: PBT UL94V-0, BLACK
 CONTACT: BRASS
 SHELL: ZINC ALLOY
 NUT: BRASS
 BACK SHELL: BRASS

FINISH

CONTACT: GOLD 10u" MIN.
 OVER 50u" NICKEL
 SHELL: NICKEL PLATED
 NUT: NICKEL PLATED
 BACK SHELL: NICKEL PLATED

ELECTRICAL

RATED CURRENT: 0.5A
 RATED VOLTAGE: 50VAC/60VDC
 INSULATION RESISTANCE: 100 MOhms MIN.
 CONTACT RESISTANCE: 10 mOhms MAX.
 WATER PROOF: IP67

ENVIRONMENT

OPERATION TEMPERATURE: -40°C TO +85°C
 MAX WIRE AWG: 24

858-X08-103RLS4

*SEE PAGE 2

0 = ϕ 7.5mm BACK SHELL

L = ϕ 9.0mm BACK SHELL

3 = BRASS/NICKEL (B/N) BACK SHELL & NUT
 T = B/N BACK SHELL / STAINLESS STEEL NUT

1 = GOLD FLASH

4 = 10u" GOLD

RoHS COMPLIANT

UNITS = inch [mm]

DO NOT SCALE FROM DRAWING



THESE DRAWINGS AND SPECIFICATIONS ARE THE PROPERTY OF NorComp AND SHALL NOT BE REPRODUCED, COPIED OR USED AS THE BASIS FOR THE MANUFACTURE OR SALE OF APPARATUS WITHOUT WRITTEN PERMISSION.

DRAWN:

M. SIGMON

DATE:

08/12/2016

NorComp

SCALE:

NTS

SHEET

1

OF

2

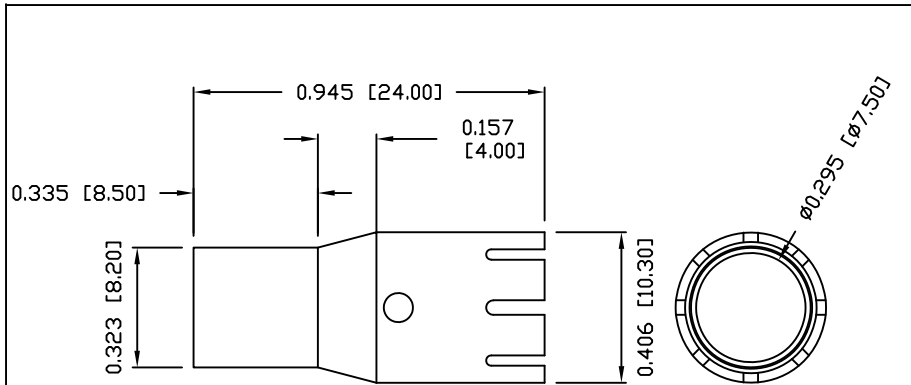
REV

7

DWG NO.

858-X08-103RLS4

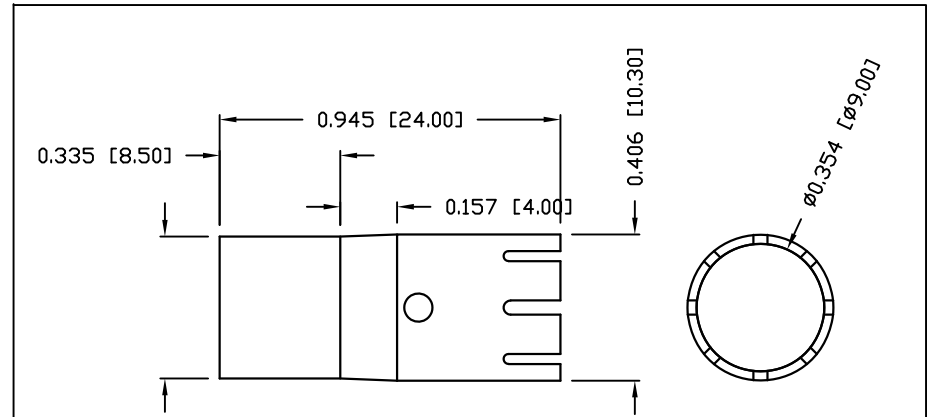
BACK SHELL
OPTION "O"



RECOMMENDED
CRIMPING INSTRUCTIONS
OPTION "O"

1. BUILD UP WIRE OD TO min $\phi 7.0\text{mm}$ W/ HEATSHRINK
2. USE 0.305" HEX CRIMP TOOL
*MAY NOT BE SUITABLE FOR ALL APPLICATIONS

BACK SHELL
OPTION "L"



RECOMMENDED
CRIMPING INSTRUCTIONS
OPTION "L"

1. BUILD UP WIRE OD TO $\phi 8.3\text{mm}$ – $\phi 8.5\text{mm}$ W/ HEATSHRINK
2. USE 0.350" HEX CRIMP TOOL
*MAY NOT BE SUITABLE FOR ALL APPLICATIONS

RoHS COMPLIANT



THESE DRAWINGS AND SPECIFICATIONS ARE THE PROPERTY OF NorComp AND SHALL NOT BE REPRODUCED, COPIED OR USED AS THE BASIS FOR THE MANUFACTURE OR SALE OF APPARATUS WITHOUT WRITTEN PERMISSION.

DRAWN:

M. SIGMON

DATE:

08/12/2016

UNITS = inch [mm]

DO NOT SCALE FROM DRAWING

NorComp

SCALE:

NTS

SHEET

2

OF

2

REV

7

DWG NO.

858-X08-103RLS4

X-ON Electronics

Largest Supplier of Electrical and Electronic Components

Click to view similar products for [Circular Metric Connectors](#) category:

Click to view products by [NorComp](#) manufacturer:

Other Similar products are found below :

[600X518037X](#) [MA1EAF1200](#) [6STD15PCR99B70A](#) [8R4000A16M020](#) [8R4A00A18M020](#) [8R5000A16M005](#) [1200910008](#) [1200910011](#)
[1300140094](#) [130203-0054](#) [1300150099](#) [RF-12S1N8A90DU](#) [1-3637-600-5205](#) [1612618](#) [8R4006A16M010](#) [8R5006A18A120](#) [1604232](#)
[1R3006A20M005](#) [RF-12P1N8A80DU](#) [RF-12P1N8A90DU](#) [41-01016](#) [41-40011](#) [41-40017](#) [42-01015](#) [4-22279-4](#) [4-22281-1](#) [4-22284-9](#) [43-](#)
[00002](#) [43-01166](#) [41-40005](#) [41-40016](#) [43-00161](#) [43-01191](#) [XS3P-M421-2](#) [600X518050X](#) [SACC-DSI-FS-5P-PG9-L180 SC](#) [8R4006A16A120](#)
[8R4000A16M010](#) [RKC 50/16](#) [1R3004A20A1201](#) [6-22279-3](#) [N03FA03144](#) [1300140077](#) [XS8A-0441](#) [859RD04-103R004](#) [860RD04-113R004](#)
[860RD04-213R004](#) [860-X08-213R004](#) [1-213245-2](#) [2273142-2](#)