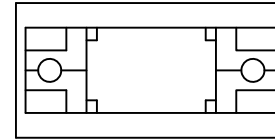
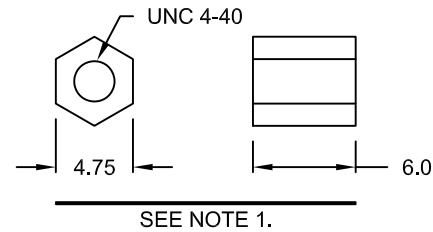
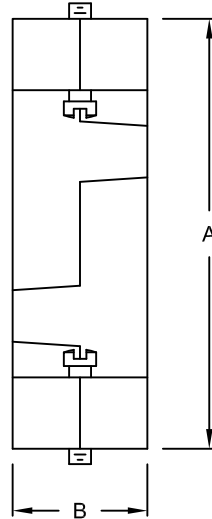
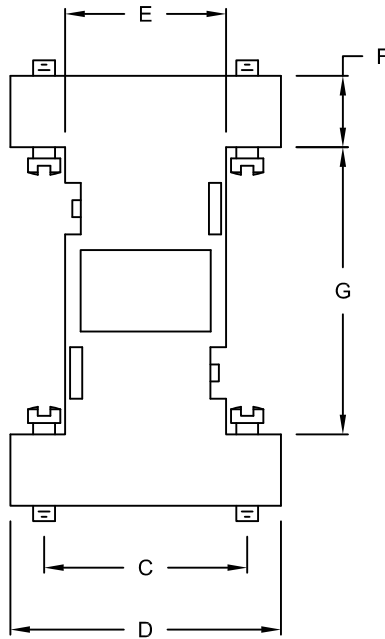


DESCRIPTION: STRAIGHT, SNAP TOGETHER - BLACK, GRAY, & METALIZED PLASTIC

**SPECIFICATIONS:**

MATERIAL: A.B.S. UL94-HB  
 \*FOR METALIZED\* PLATING: NICKEL OVER COPPER



TYPICAL BOTH ENDS

**BACKSHELL KIT INCLUDES:**

- (2) BACKSHELL HALVES
- (4) JACKSCREWS

**NOTE:**

1. IF REQUIRED, COUPLING FOR FEMALE CONNECTOR, P/N 160-000-006R032, MUST BE ORDERED SEPARTELY

**957-YYY-0Y0RYY1**

SERIES \_\_\_\_\_  
 POSITIONS \_\_\_\_\_  
 009 \_\_\_\_\_  
 015 \_\_\_\_\_  
 025 \_\_\_\_\_  
 MATERIAL \_\_\_\_\_  
 010 = PLASTIC  
 020 = METALIZED PLASTIC  
 RoHS COMPLIANT \_\_\_\_\_  
 COLOR \_\_\_\_\_  
 01 = BLACK \*ONLY FOR 010 PLASTIC OPTION  
 03 = GRAY \*ONLY FOR 010 PLASTIC OPTION  
 12 = METALIZED  
 PUT-UP \_\_\_\_\_  
 1 = KIT

DIMENSIONS (mm)

SIZE	A	B	C	D	E	F	G
9	52.9	16.5	24.99	33.3	19.8	8.8	35.3
15	52.0	16.5	33.3	41.2	27.6	9.1	33.8
25	53.2	16.3	47.1	55.3	42.0	9.0	35.2

TOLERANCE  
 X. ±0.5  
 X.X ±0.3  
 X.XX ±0.2

**DO NOT SCALE FROM DRAWING**



THESE DRAWINGS AND SPECIFICATIONS ARE THE PROPERTY OF NorComp AND SHALL NOT BE REPRODUCED, COPIED OR USED AS THE BASIS FOR THE MANUFACTURE OF SALE OF APPARATUS WITHOUT WRITTEN PERMISSION.

DRAWN: C. SMITH  
 DATE: 05-09-07

**RoHS COMPLIANT**

**NorComp**

SCALE: NTS SHEET 1 OF 1 REV 2

DWG NO. 957-YYY-0Y0RYY1

## X-ON Electronics

Largest Supplier of Electrical and Electronic Components

*Click to view similar products for [D-Sub Backshells](#) category:*

*Click to view products by [NorComp](#) manufacturer:*

Other Similar products are found below :

[600X51137X](#) [600X54009X](#) [66241-12A](#) [M85049/6-38N](#) [M85049/86-12N03](#) [M85049/90-13P03](#) [70.350.0636.4](#) [70.350.2435.1](#) [72.350.1035.2](#)  
[72.352.2435.1](#) [73.359.4035.3](#) [829472-1](#) [PCS-E20W](#) [970-015-040R011](#) [971-009-030R121](#) [971-009-040R011](#) [971-015-040R011](#) [DPH-B-003](#)  
[1437013-9](#) [1484402-8](#) [156-3025-EX](#) [16-500800](#) [165X02659X](#) [165X03329A](#) [165X03399A](#) [165X10259X](#) [165X11359X](#) [165X11759X](#)  
[165X11889X](#) [165X11899X](#) [165X13019X](#) [165X13029X](#) [165X13169X](#) [165X13199X](#) [165X13239X](#) [165X13389X](#) [165X13489X](#)  
[165X14219X](#) [165X14429X](#) [165X14449X](#) [165X17409X](#) [165X17439X](#) [165X17569X](#) [165X17599X](#) [165X17609X](#) [165X17889X](#)  
[165X17979X](#) [L171373](#) [971-025-030R121](#) [300X10989X](#)